



Active Uranium Exploration

RIU Explorers Conference
Fremantle, Australia
21 February 2007

Will Robinson
Managing Director

ASX Code : ENR

www.enrl.com.au



Active Uranium Exploration

- Establishing resources - Lake Way South
- Yeelirrie Channel
- Large scale, advanced drill ready targets
- Expanding the uranium portfolio

Mar 2006
3,250km²



Feb 2007
+6,000km²

Corporate Information

Board

Paul Chapman (Chairman)
Will Robinson (Managing Director)
Peter Bewick (Exploration Director)

Issued Capital:

60m Ordinary Shares
0.45m Employee Options

Market Cap:

\$27m

Cash:

\$3.4m

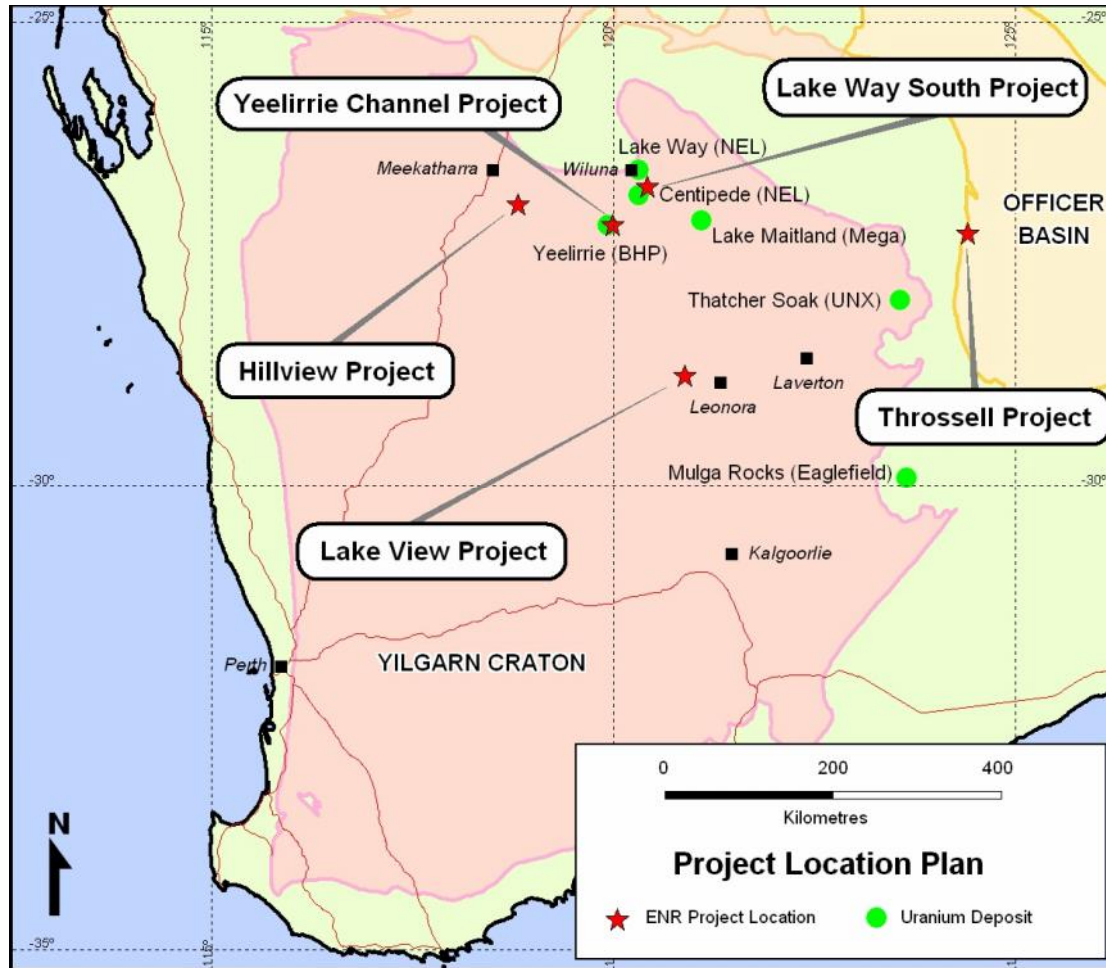
Agenda

Uranium Projects – Current Activity

Expanding the Project Portfolio

The Next 12 Months

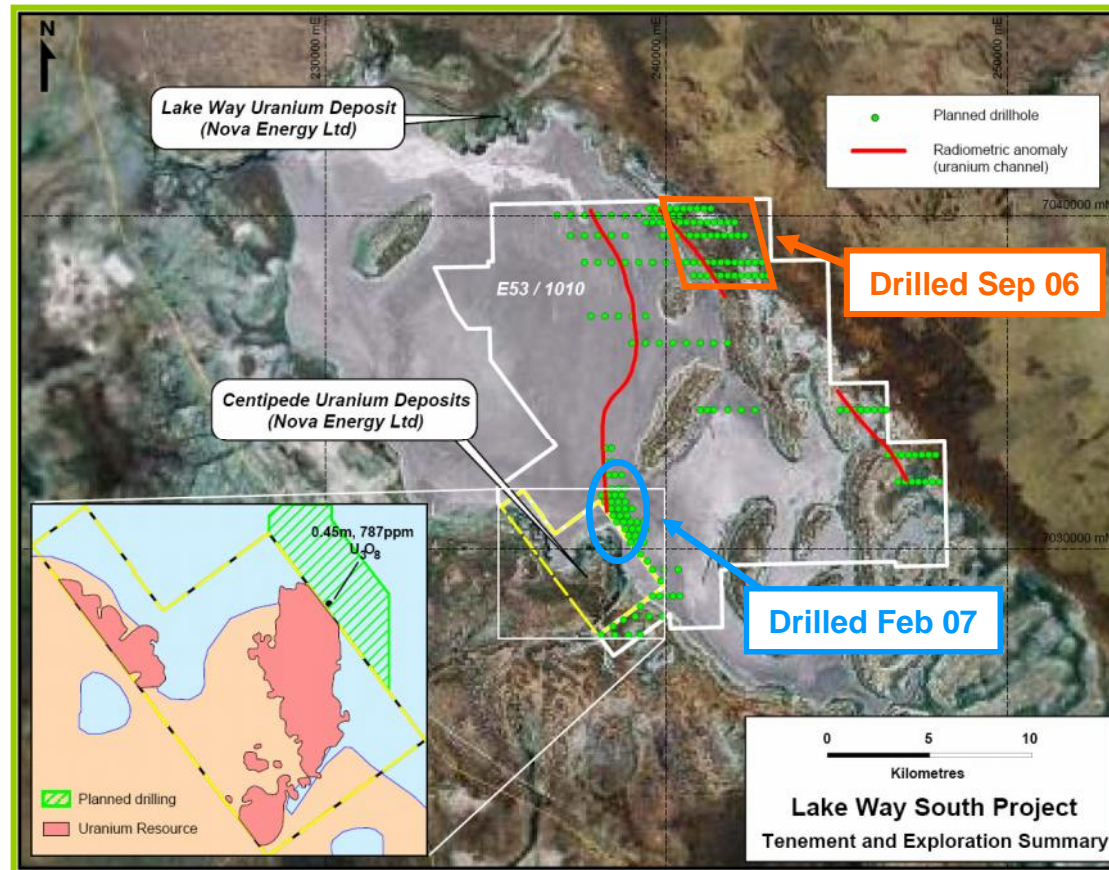
Uranium Projects – Current Activity



All projects Encounter 80% / Avoca 20%, except Lake Way 60% / 40%

Establishing Resources - Lake Way South JV

Drilling for extensions to Centipede uranium resource

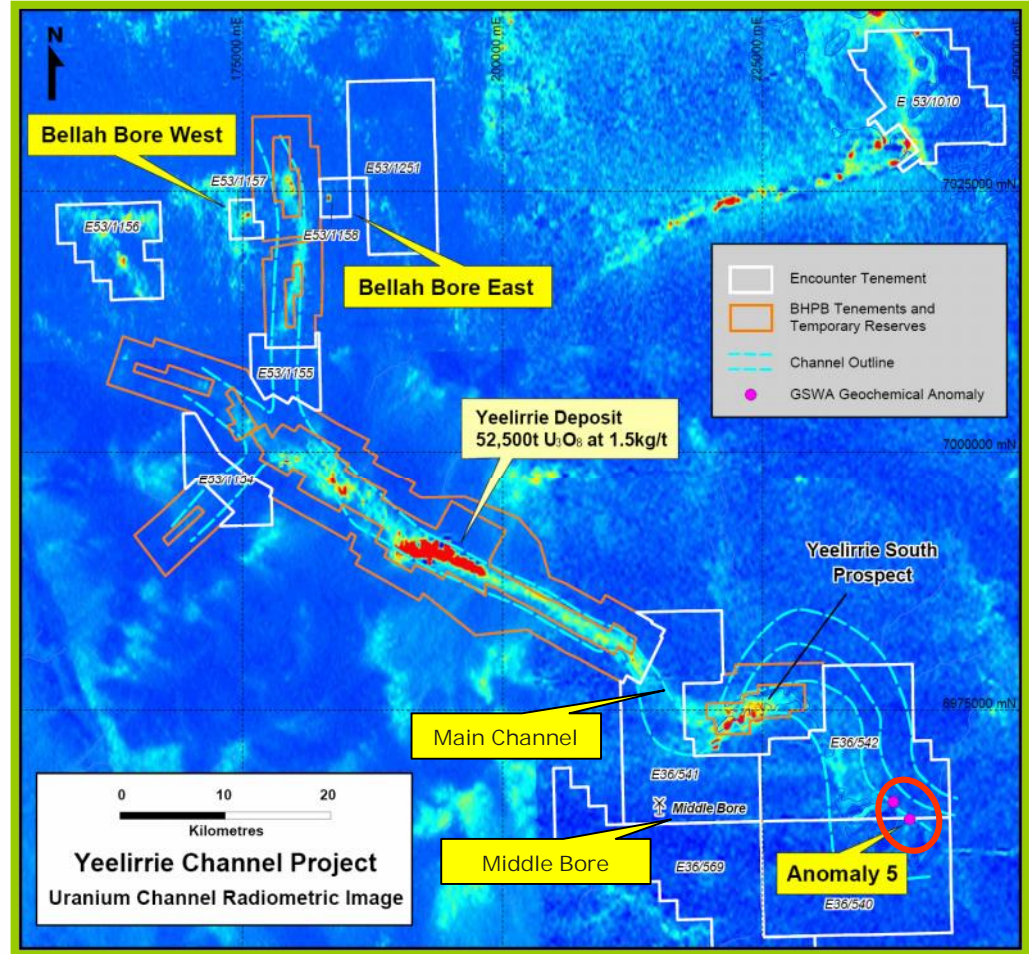


...12km of prospective drainage system

Yeelirrie Channel

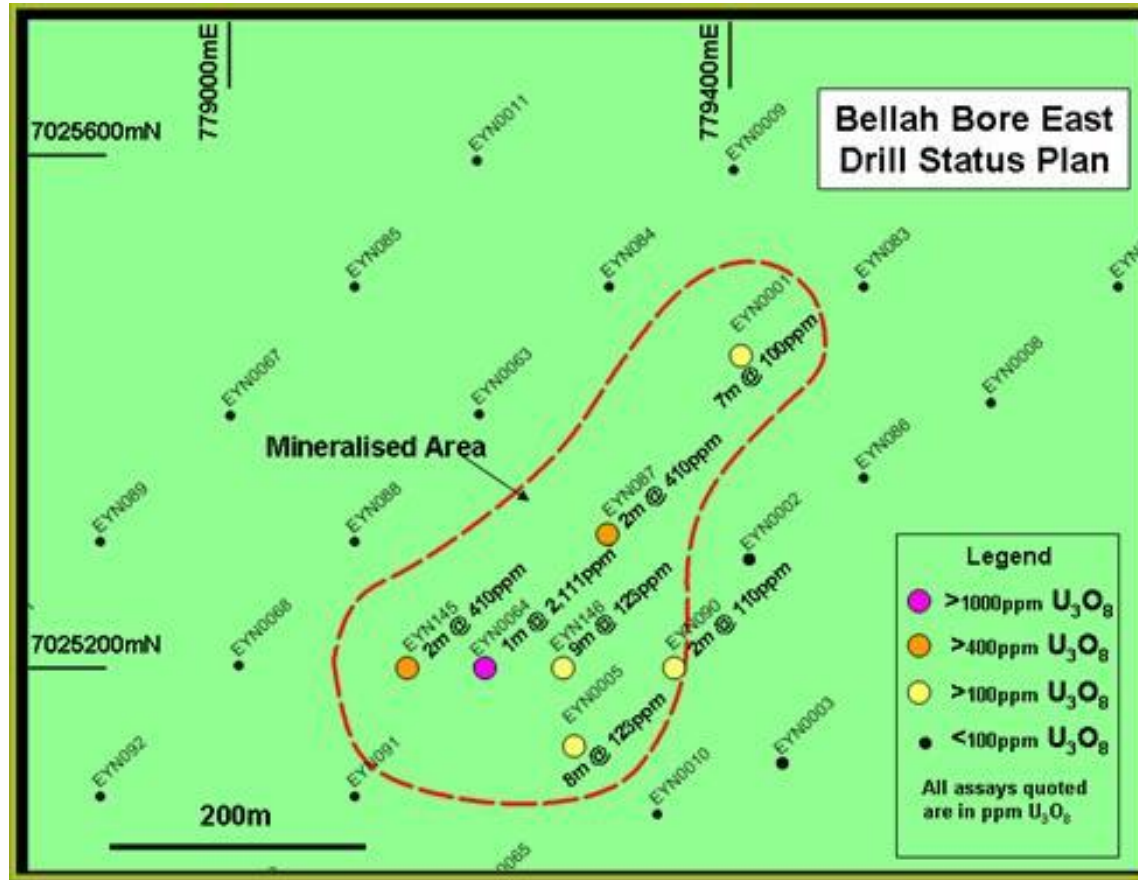
The premier ground position outside BHP's Yeelirrie deposit, world's largest calcrete U deposit

- Potential for satellites to main deposit
- Identified new mineralised zone at Bellah Bore East



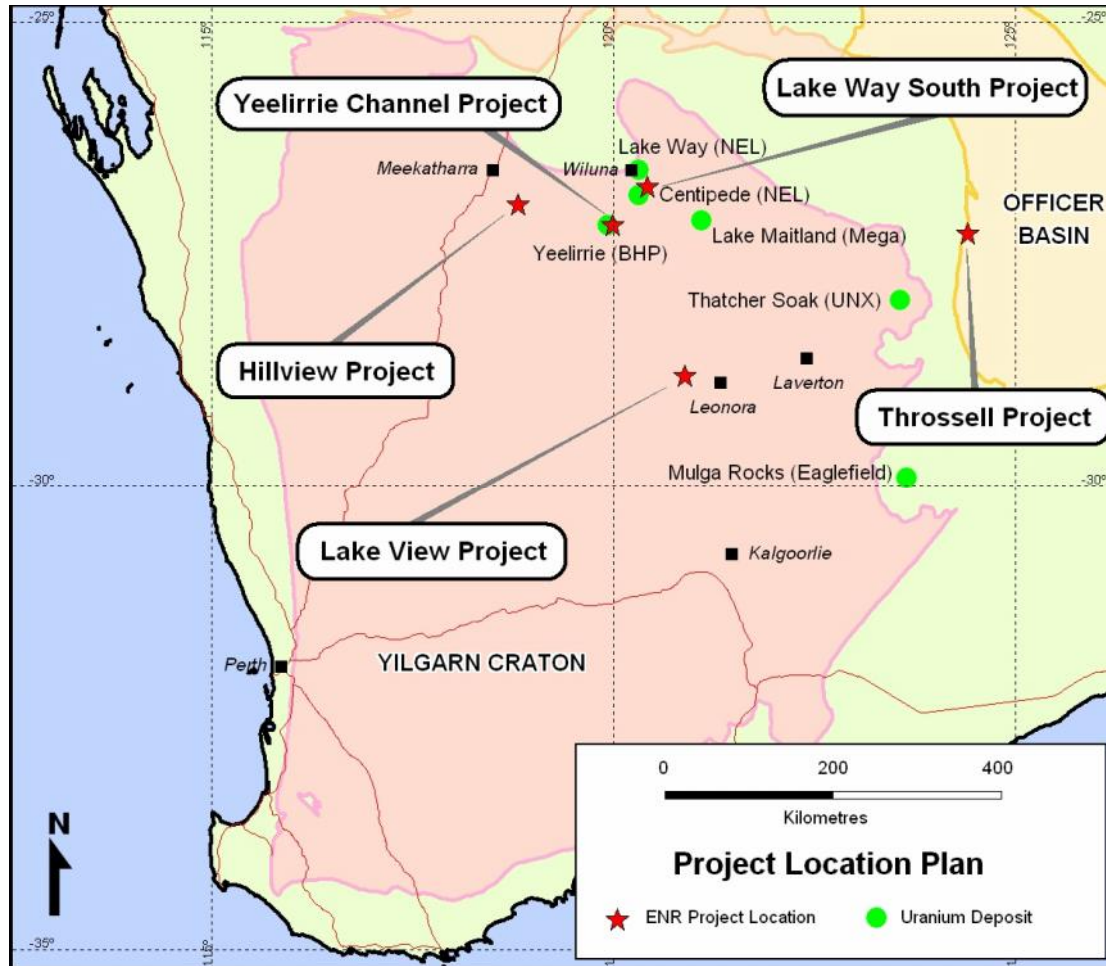
Establishing Resources - Bellah Bore East

Discovery of satellite near surface uranium mineralisation



...confirms the initial hypothesis

Uranium Projects - Drilling H1 2007

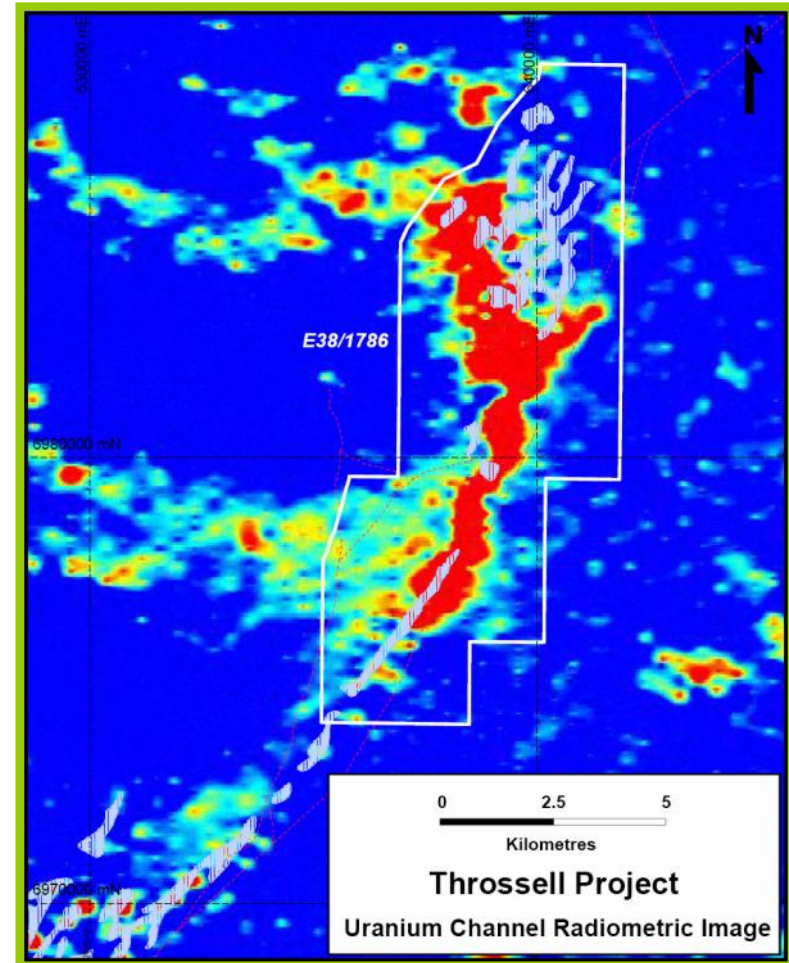


All projects Encounter 80% / Avoca 20%, except Lake Way 60% / 40%

Throssell Project

Large untested radiometric anomaly within valley fill calcrete

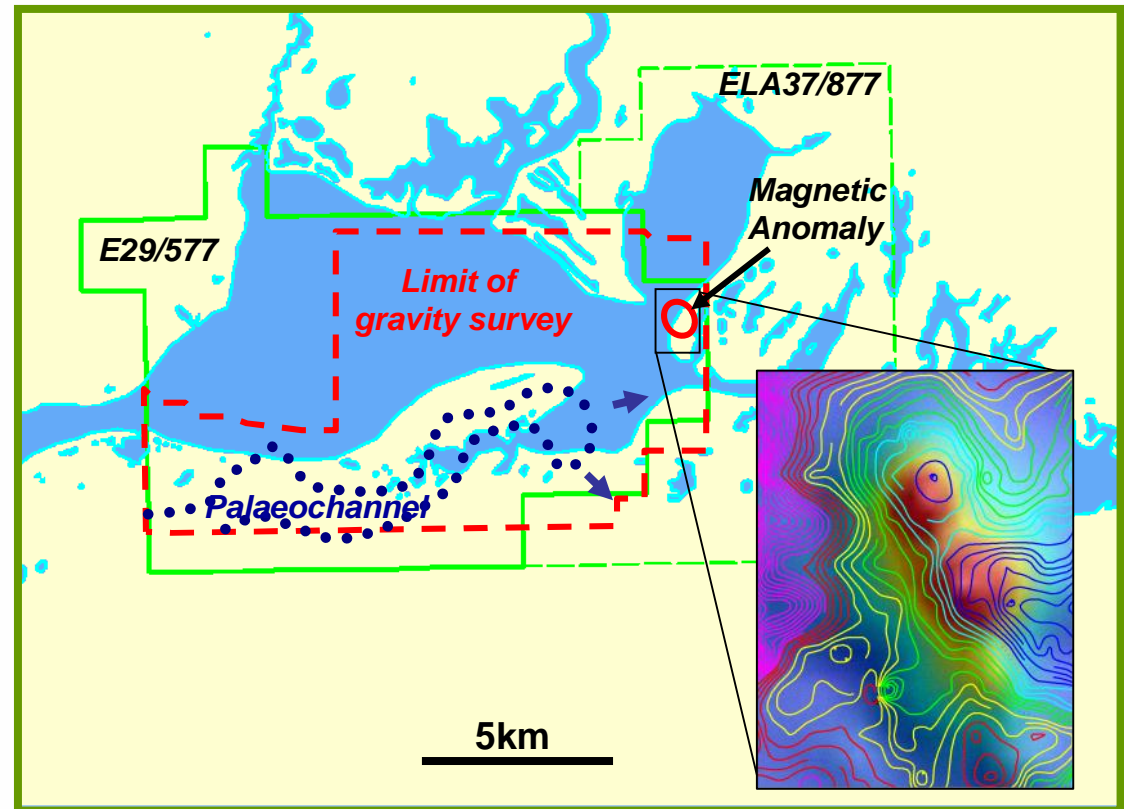
- 10km radiometric anomaly
- Major drainage system
- Well developed calcrete zones



Lakeview Project

Newly identified palaeochannel position downstream of known uranium occurrences

- Radiometric & geochemical anomaly
- Gravity survey identified palaeochannel position
- Compelling drill target

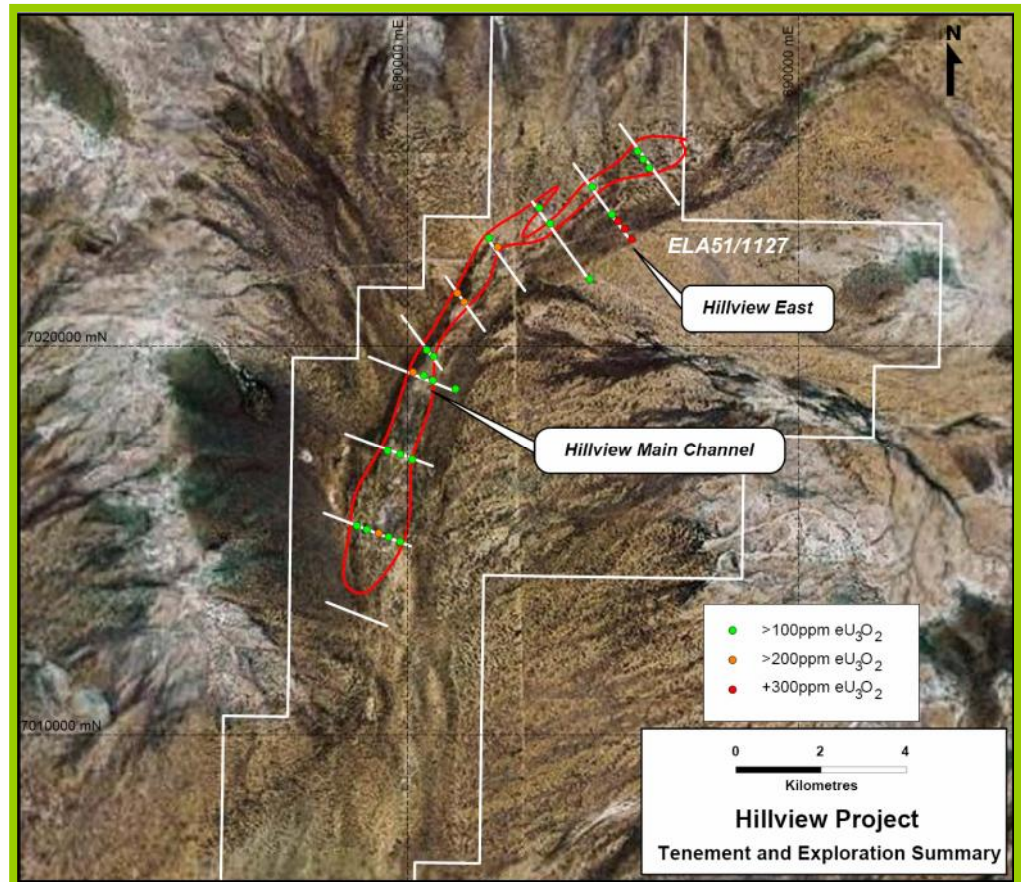


1VD gravity contours on the regional magnetics

Hillview Project

Historic uranium mineralisation with higher grade potential

- 15km long 100-300ppm U mineralised channel
- Opportunity to identify higher grade pods
- Higher grade potential at Hillview East



Agenda

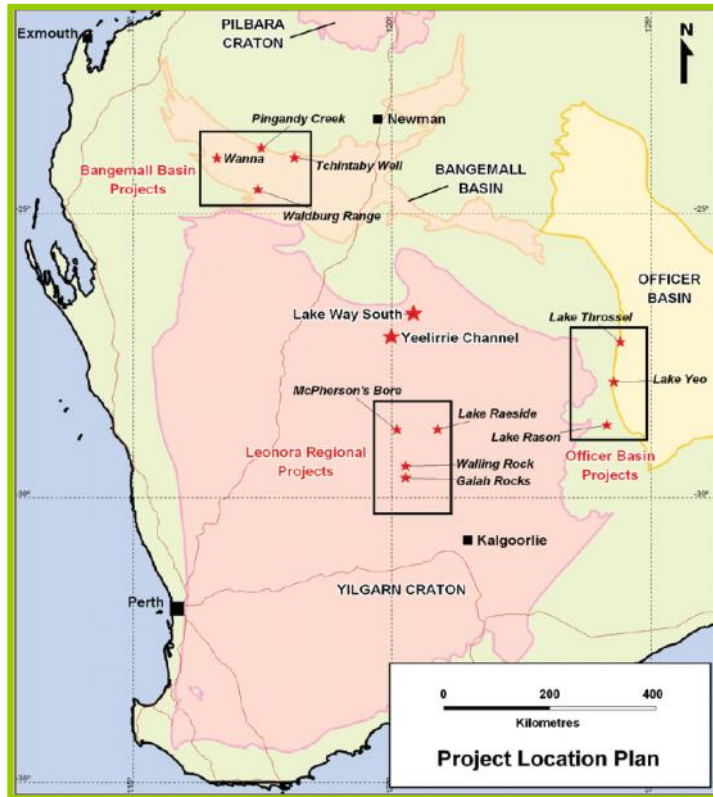
Uranium Projects – Current Activity

Expanding the Project Portfolio

The Next 12 Months

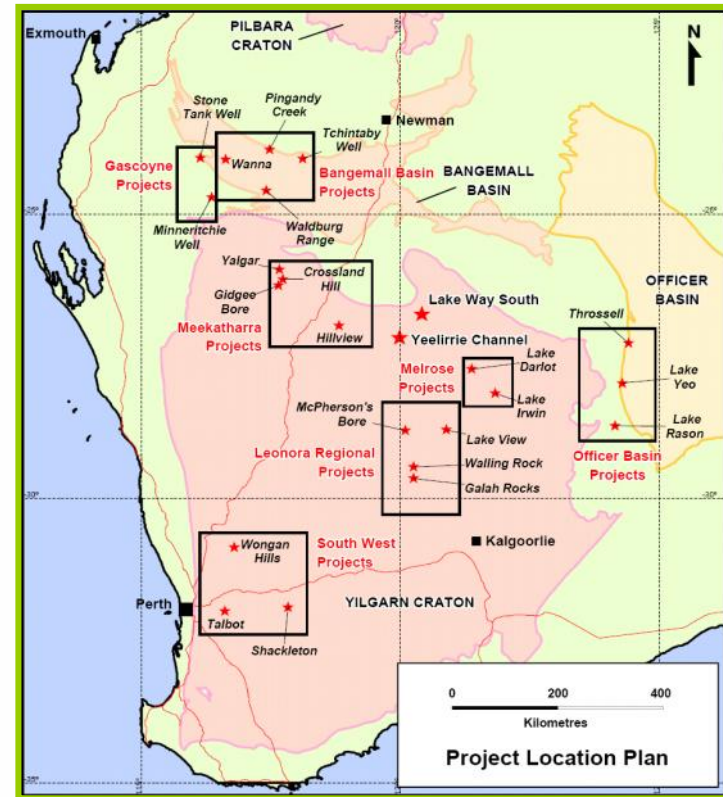
Expanding the Pipeline

13 Projects (3,250 square kms)



Mar '06

25 Projects (>6,000 square kms)



Feb '07

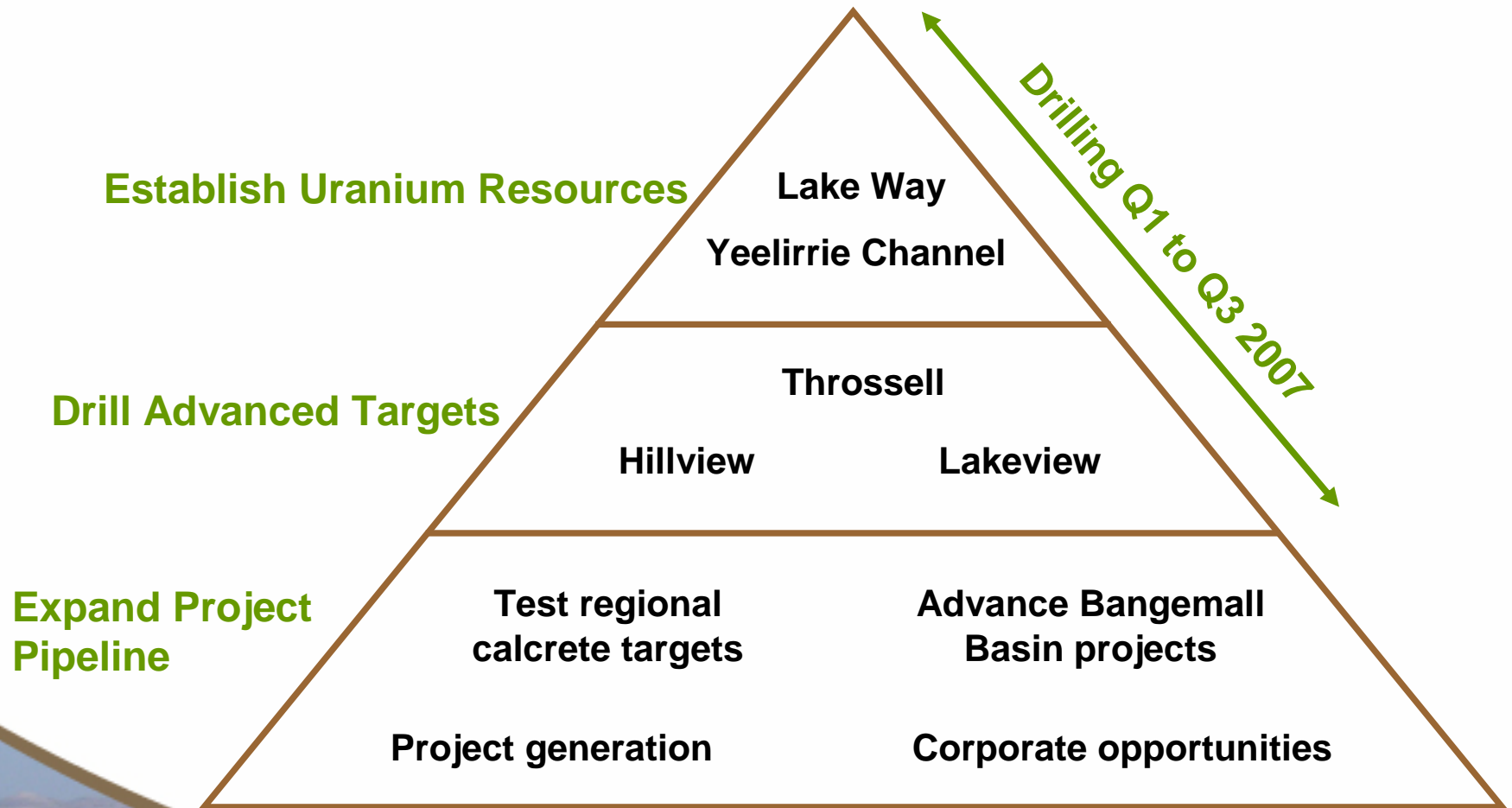
Agenda

Uranium Projects – Current Activity

Expanding the Project Portfolio

The Next 12 Months

2007 - Continued Company Growth





Active Uranium Exploration

RIU Explorers Conference
Fremantle, Australia
21 February 2007

Will Robinson
Managing Director

ASX Code : ENR

www.enrl.com.au

