



encounter
RESOURCES LIMITED

ASX : ENR

Australian Uranium Conference
Fremantle, Western Australia
22-23 July 2009

Summary

- ✓ Uranium, Copper and Gold
- ✓ 10 million lbs U_3O_8 Inferred Resource discovered at Hillview
- ✓ Change of WA policy for uranium mining – a big step forward
- ✓ Major land holder in the Paterson Province that hosts the Kintyre uranium deposit & Nifty copper mine
- ✓ Extensive base metals project portfolio in the Bangemall Basin
- ✓ Main focus in 2009 is the Paterson Province (Copper & Uranium)

People

Paul Chapman - Chairman

Will Robinson - Managing Director

Peter Bewick - Exploration Director

Jon Hronsky - Non-Executive Director

Kevin Hart - Company Secretary



Experienced team of former WMC / BHP Billiton executives

Project Portfolio

1. PATERSON PROVINCE

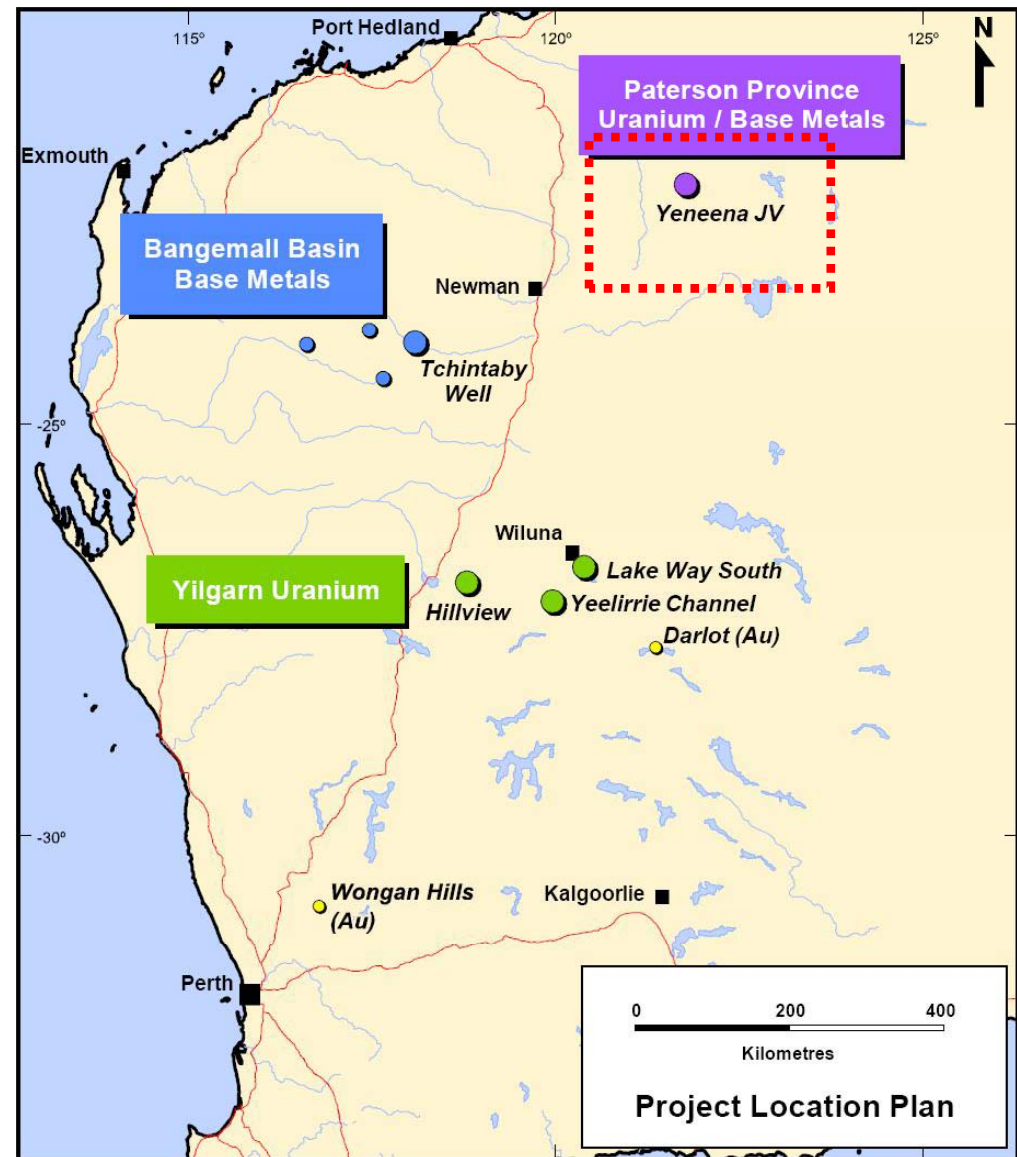
High quality uranium and copper targets close to Kintyre and Nifty

2. YILGARN URANIUM

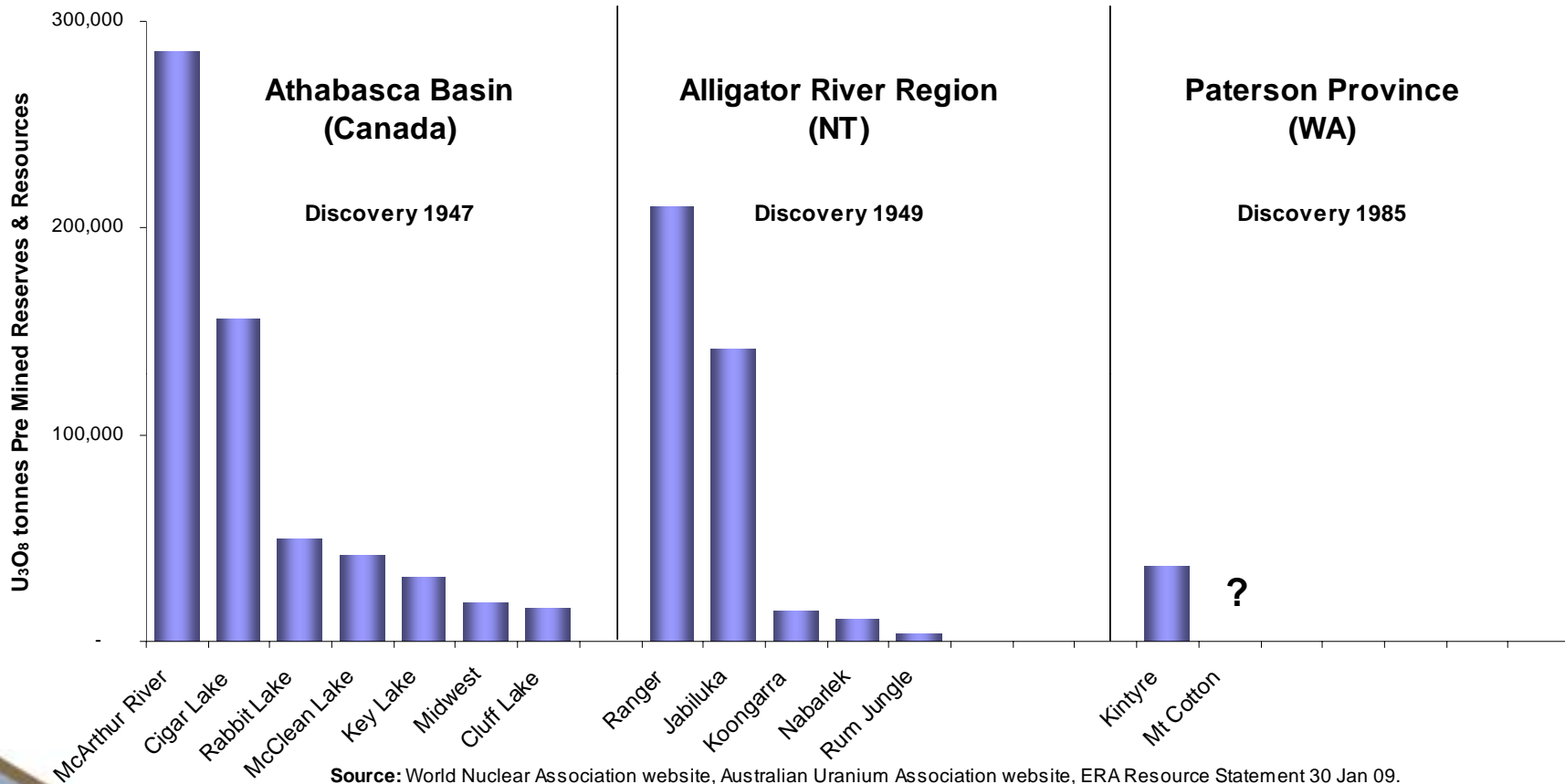
Inferred resource of 10.6 million lbs U_3O_8 at Hillview plus Yeelirrie/Lake Way satellites

3. BANGEMALL BASIN

SEDEX 'Century style' base metals targets in under-explored Proterozoic basin



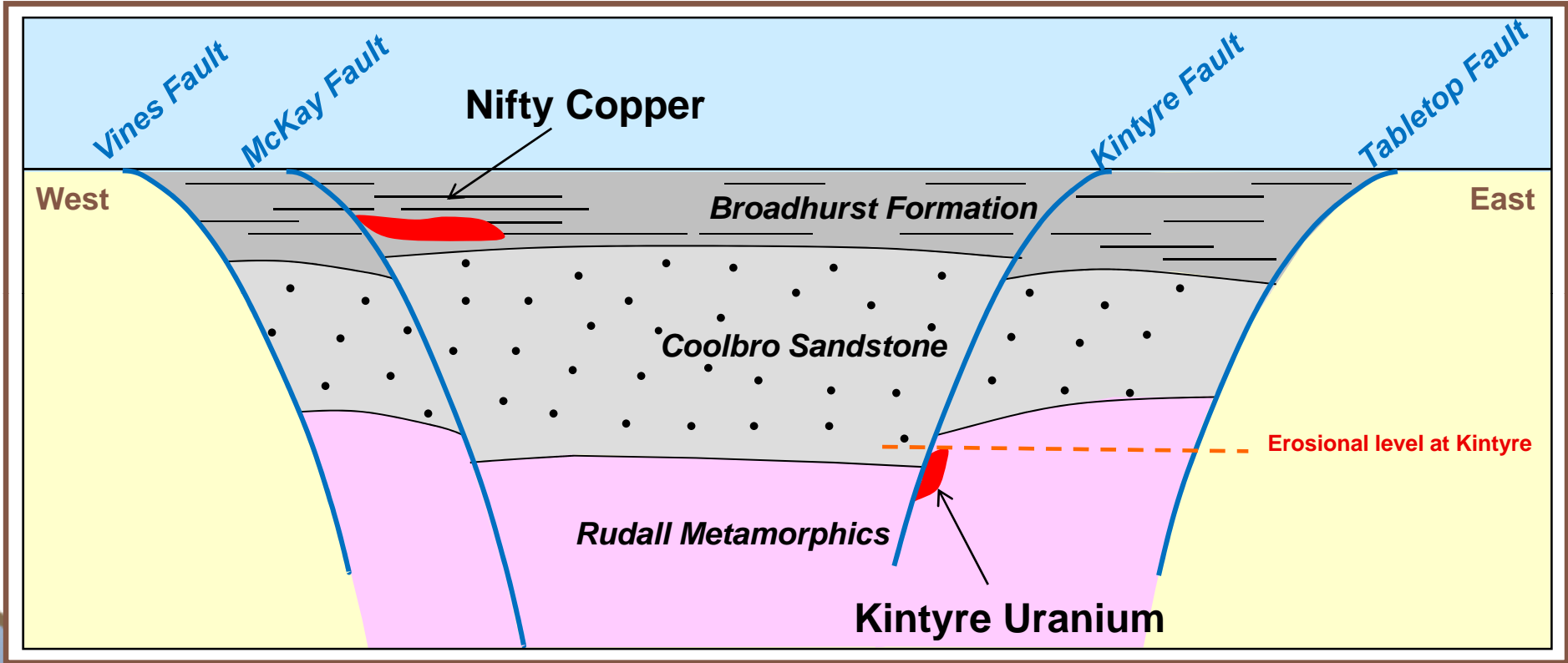
Unconformity Uranium Districts



Source: World Nuclear Association website, Australian Uranium Association website, ERA Resource Statement 30 Jan 09. Athabasca Basin excludes production prior to 1995.

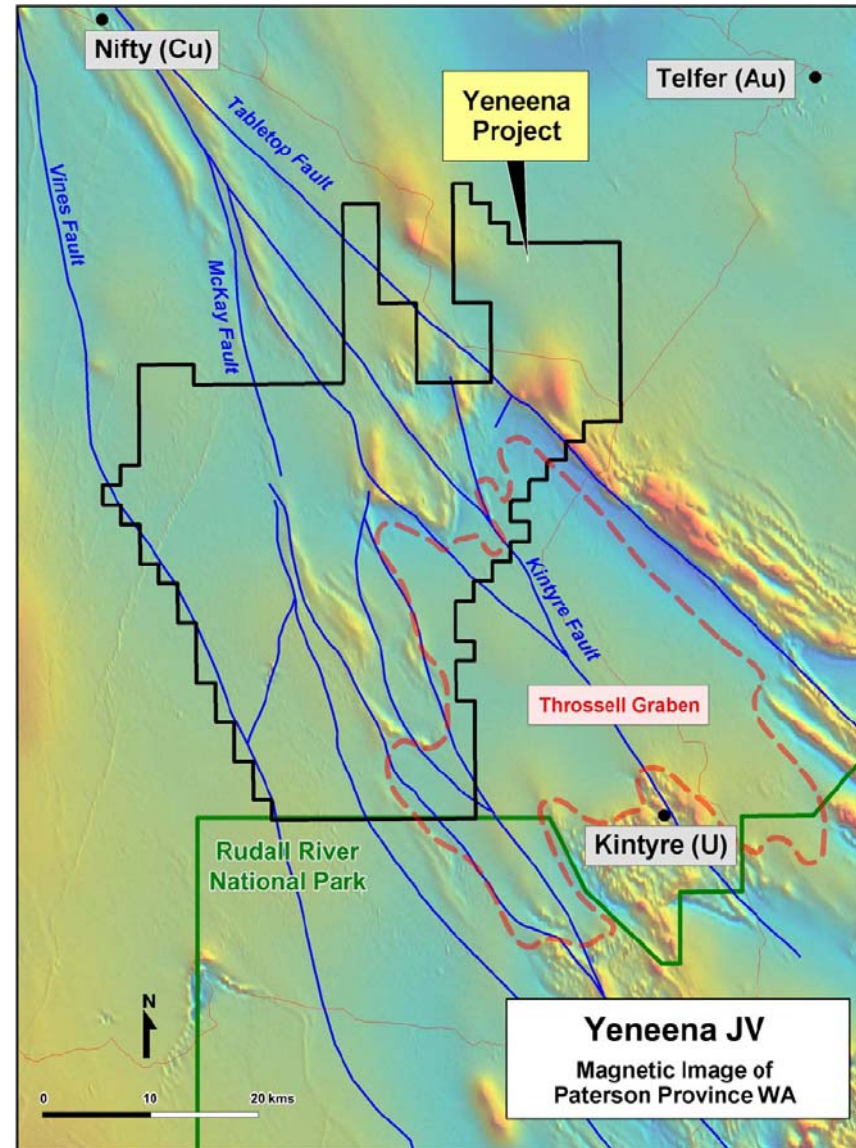
The Paterson Province is the most underexplored unconformity uranium region in the world

Paterson Province - Schematic Section



Paterson Province

- 1500 km² in under-explored, highly endowed mineral belt
- Structures that host Nifty and Kintyre extend through the project
- High quality uranium and copper targets identified



JV with Barrick Gold, ENR earning 75% interest

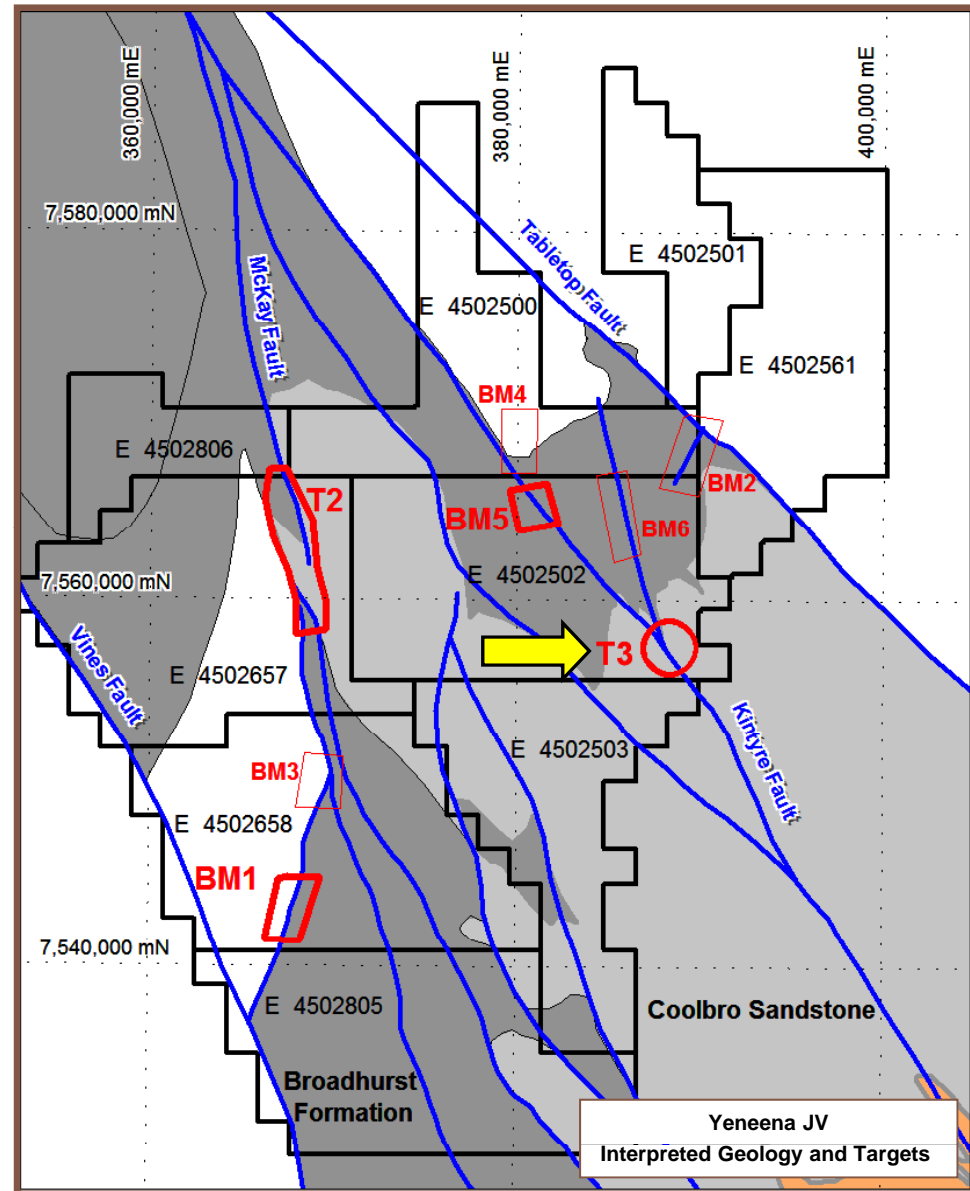
Paterson Province

- Immature exploration field
- Extensive sand cover
- No systematic uranium exploration
- Under-explored copper potential

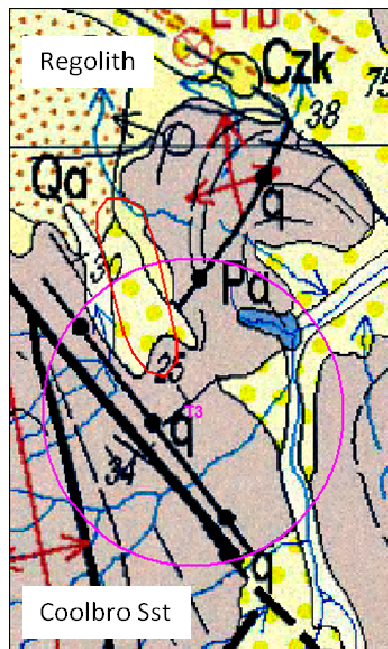


Paterson Province

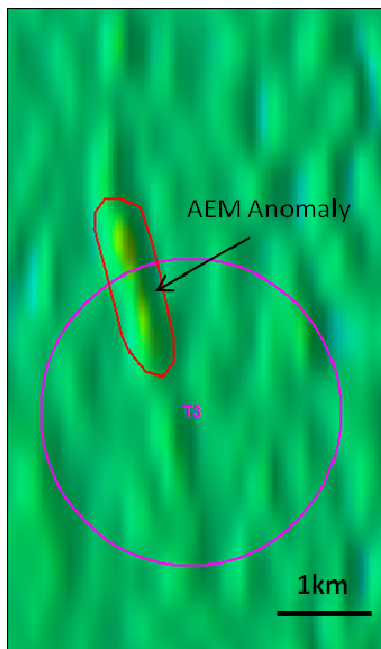
- New datasets acquired:
 - Airborne EM survey (2008)
 - Multi-element re-analysis from 18,000m of historical drilling (2008)
- Eight regional scale exploration targets generated



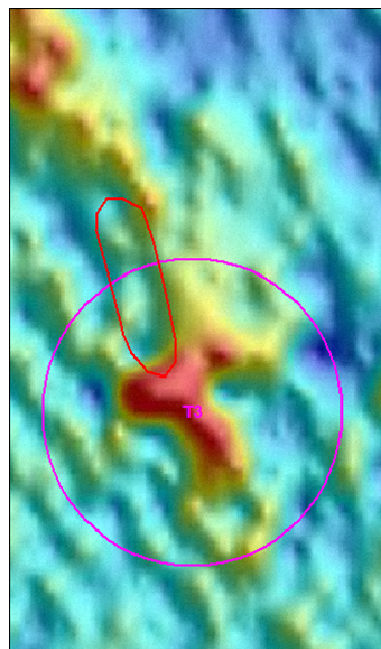
T3 Target (Paterson Province)



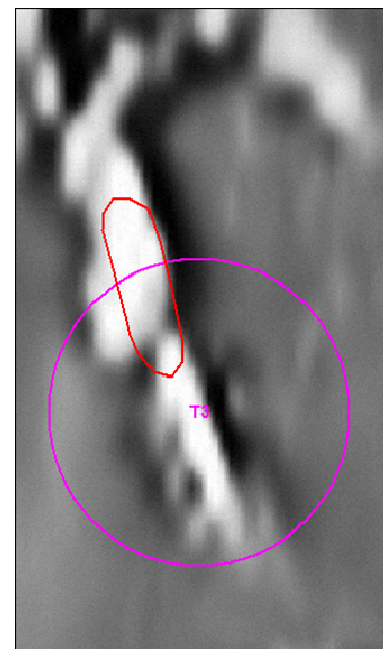
1:250,000 Surface Geology



Channel 15 Tempest AEM



Uranium Channel Radiometrics

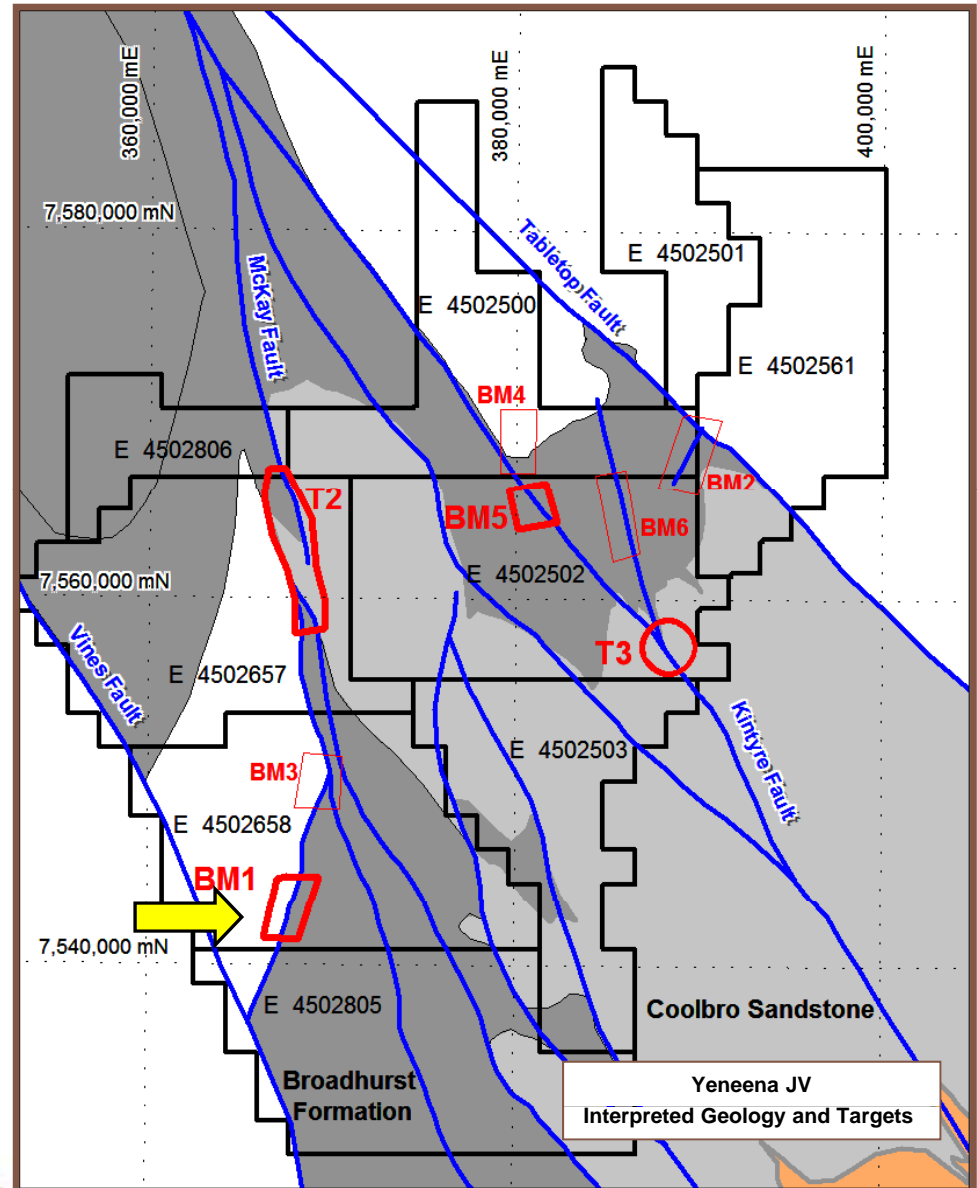


1VD Magnetics

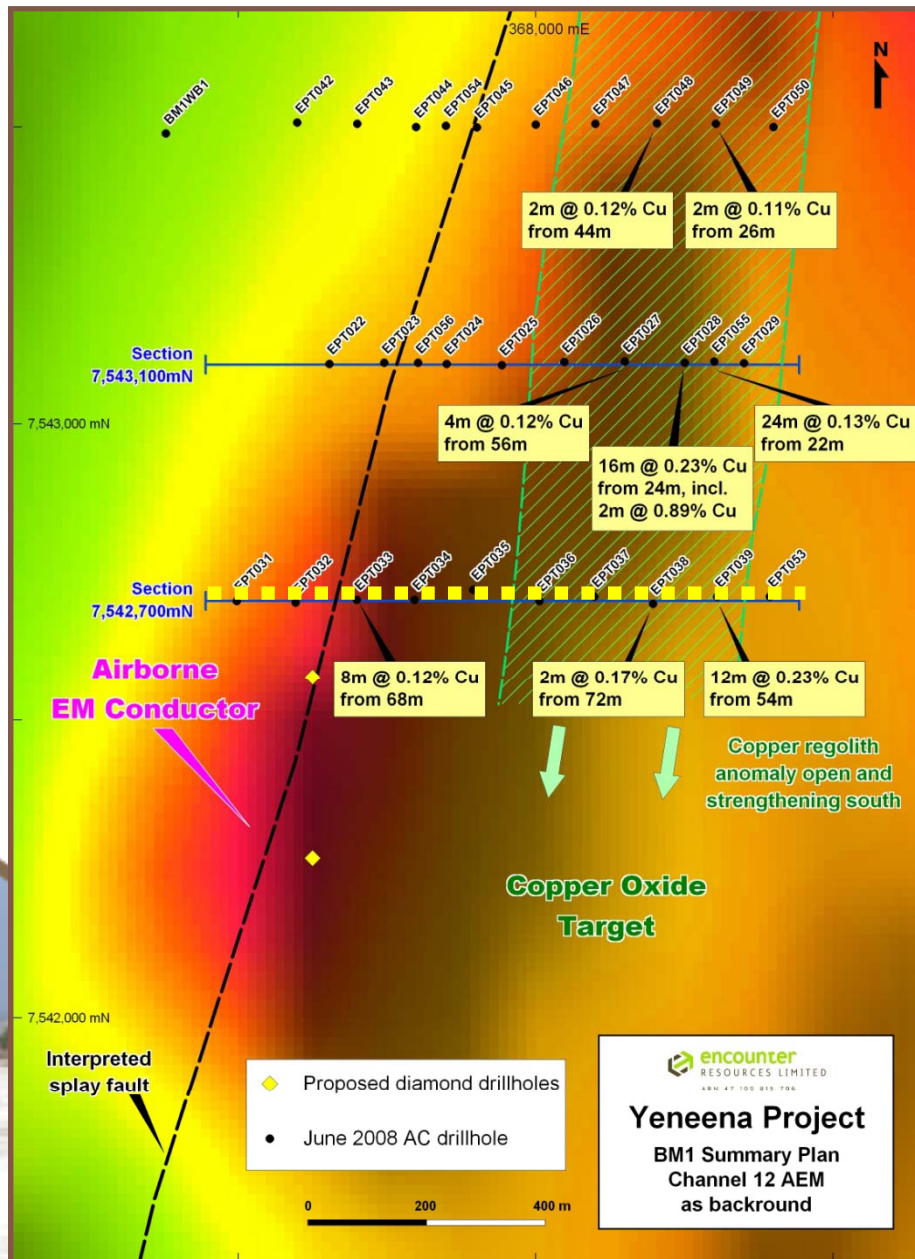
- Coincident late time EM conductor, magnetic and uranium channel radiometric anomaly
- Outcropping Coolbro Sandstone to the west and east of the target

BM1 Target (Paterson Province)

- Located on a NNE trending splay structure to the McKay Fault
- Coincident magnetic and AEM anomaly
- Aircore drill program completed in June 2009

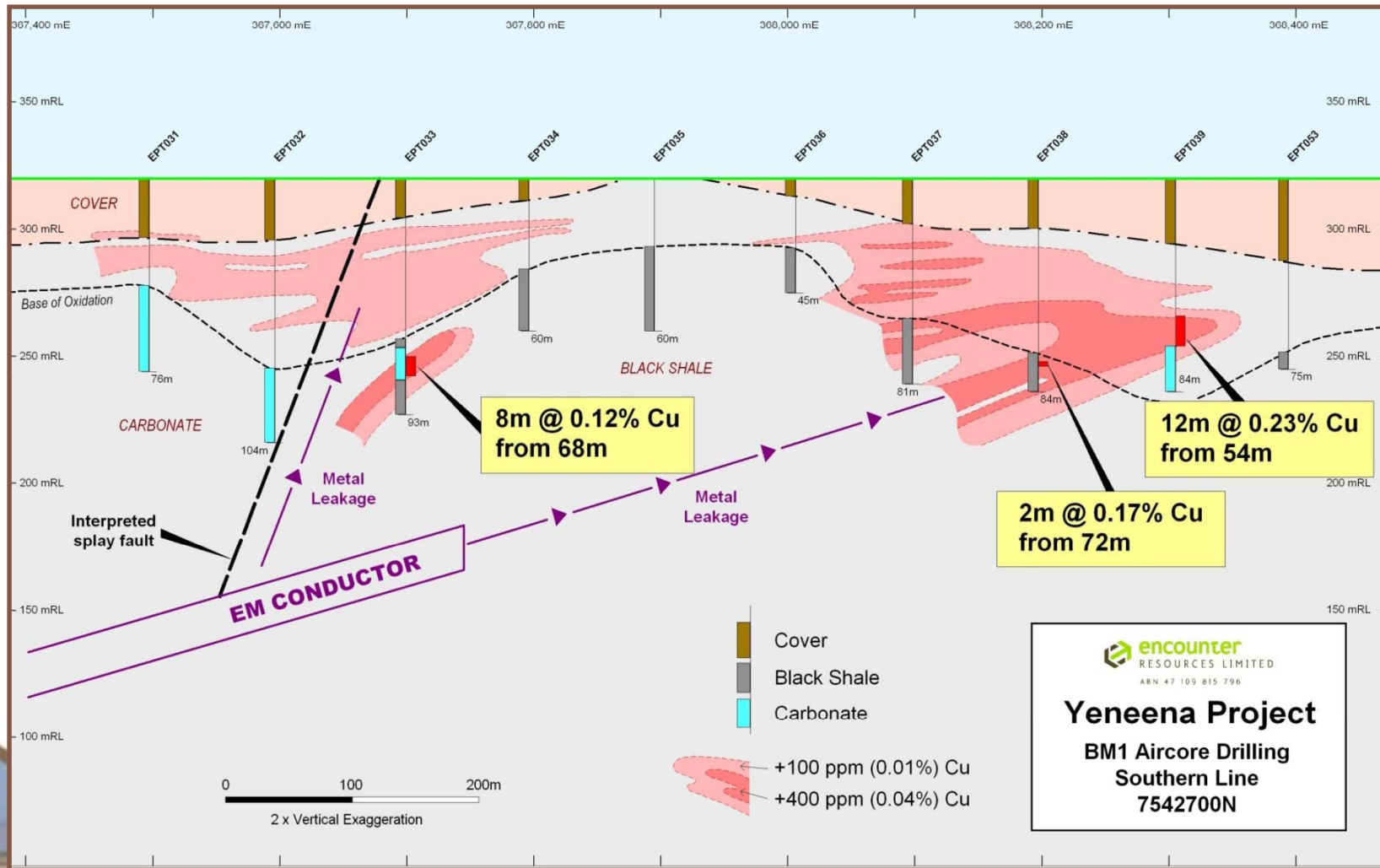


BM1 Target (Paterson Province)



- Strong copper regolith anomaly (up to 2m @ 0.89% Cu) directly up dip of a discrete late time EM conductor
- Copper regolith anomaly is open and strengthening to the south
- Scale and nature of the anomalism indicates the potential for a major deposit
- Diamond drill program Sept 09

BM1 Target (Paterson Province)



Paterson Project Summary

- Stratigraphy and key structures that host the Nifty copper and Kintyre uranium deposits extend through the Yeneena project
- Extensive sand cover and minimal modern exploration
- New geophysical and geochemical datasets collected in 2008
- Drill ready unconformity uranium and sedimentary copper targets defined
- Drilling co-funded under the WA Govt Exploration Incentive Scheme
- Diamond drill program to commence in September 2009

Project Portfolio

1. PATERSON PROVINCE

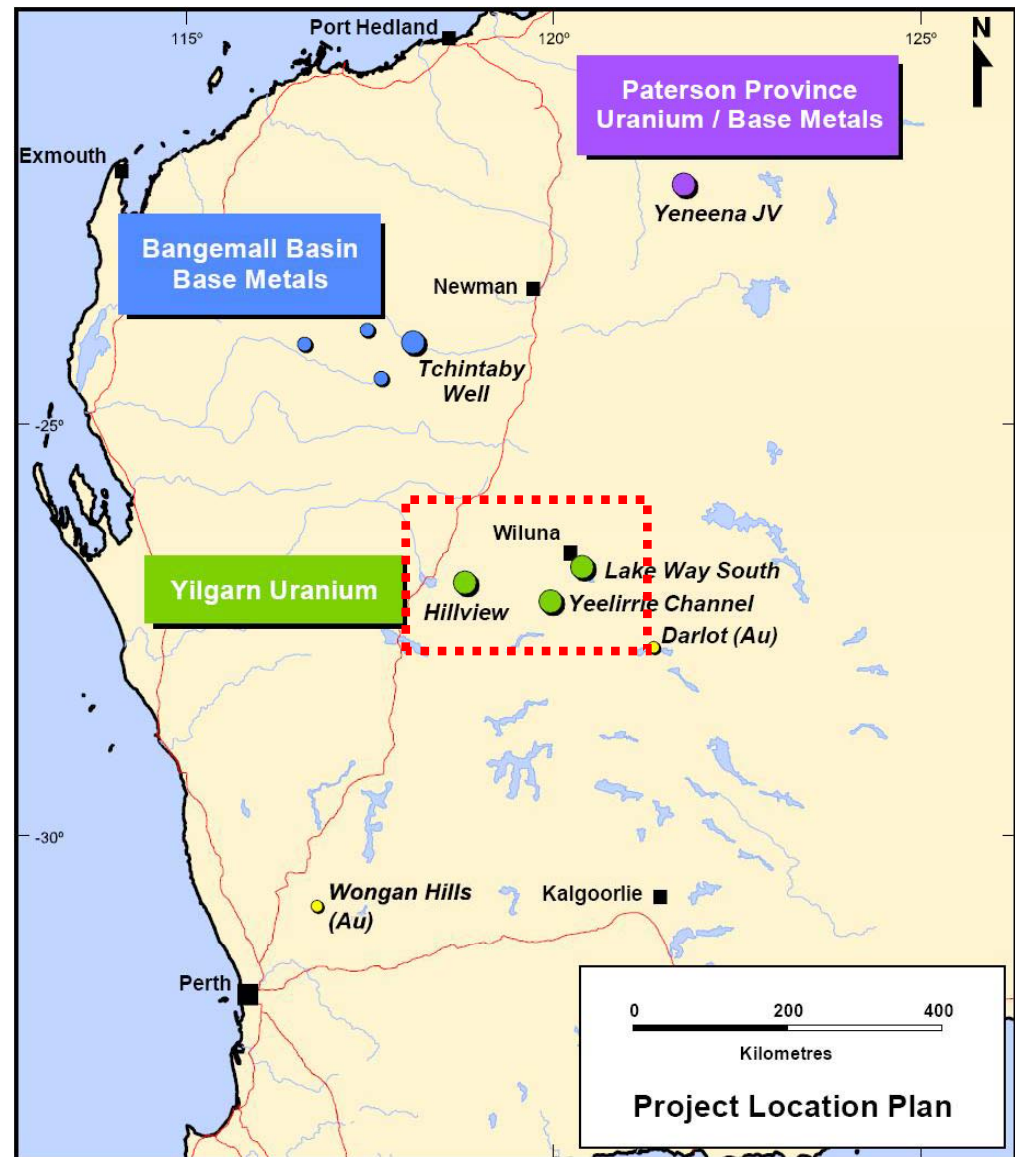
High quality uranium and copper targets close to Kintyre and Nifty

2. YILGARN URANIUM

Inferred resource of 10.6 million lbs U_3O_8 at Hillview plus Yeelirrie/Lake Way satellites

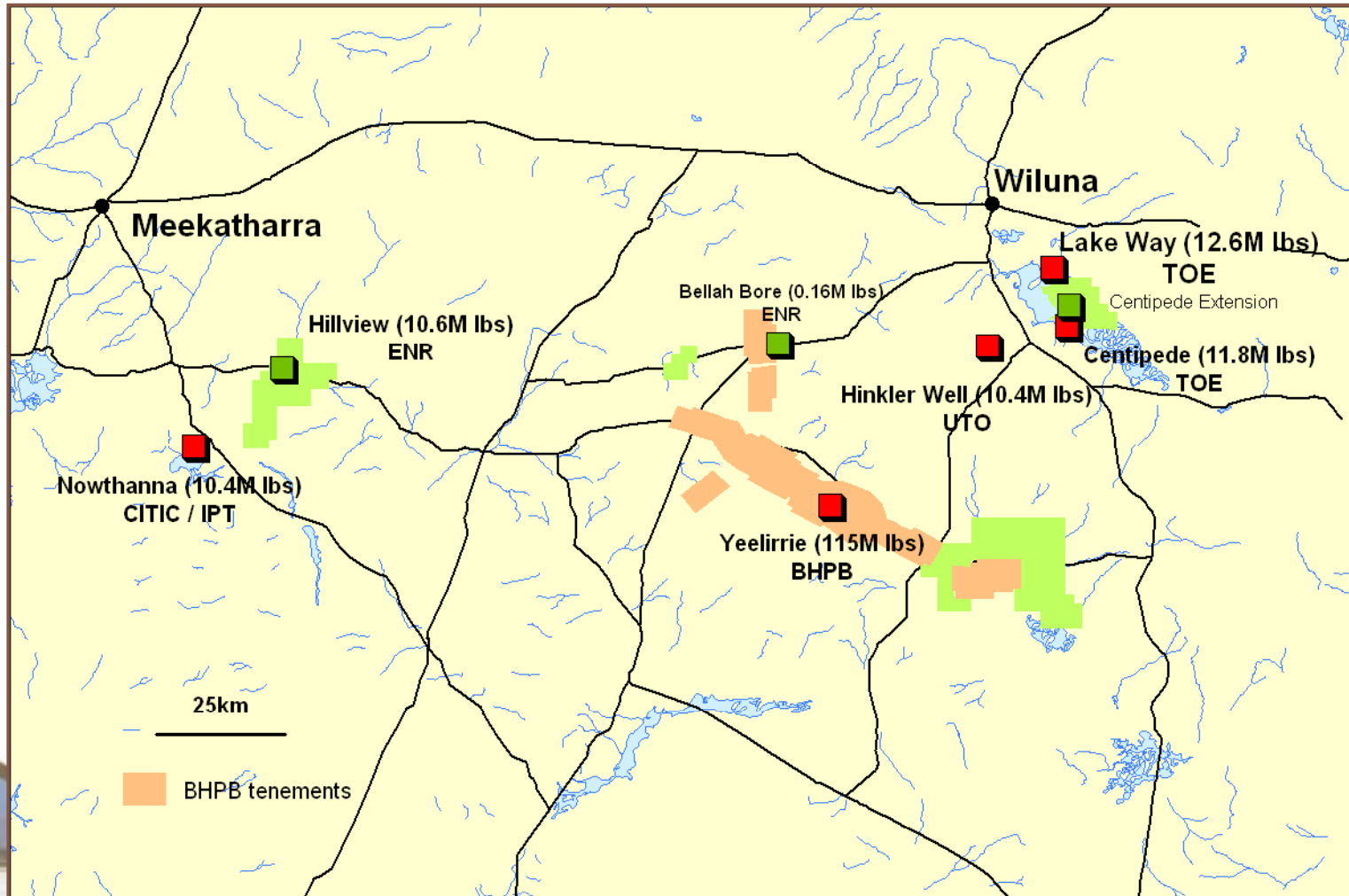
3. BANGEMALL BASIN

SEDEX 'Century style' base metals targets in under-explored Proterozoic basin



Yilgarn Uranium

A future production centre for uranium – ENR well positioned

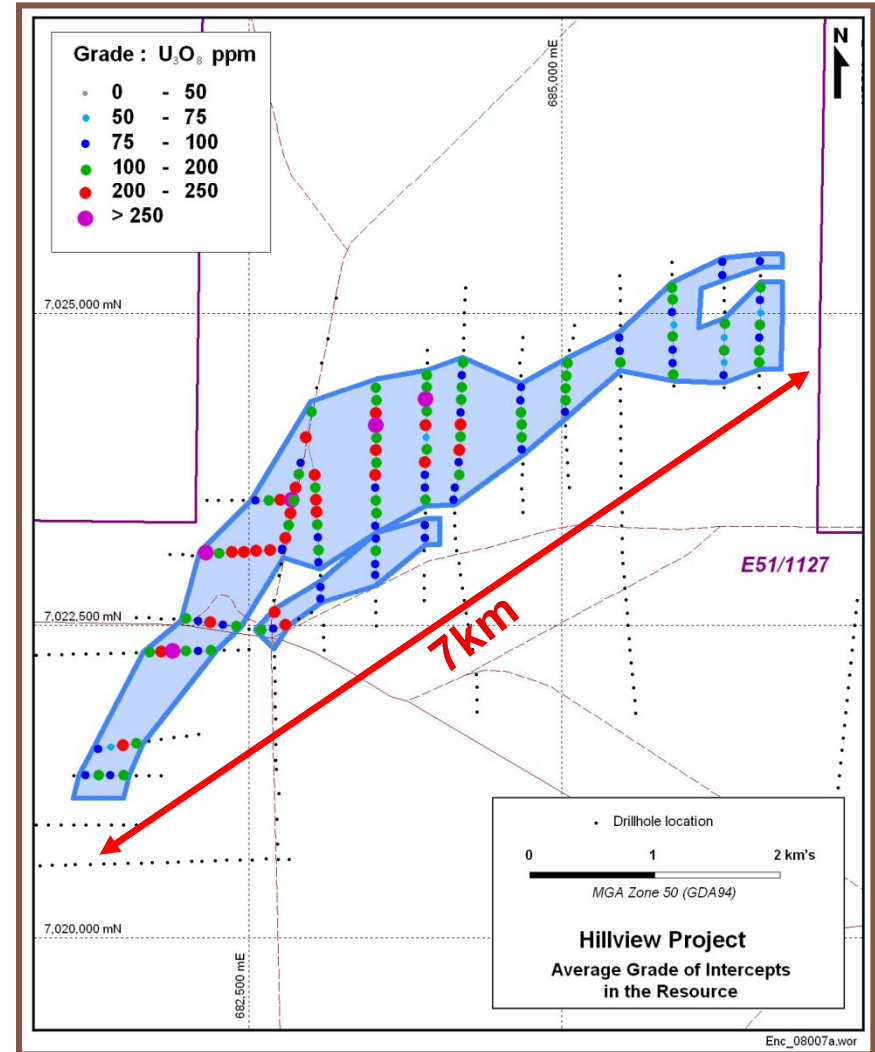


Hillview Project

Large scale calcrete hosted uranium deposit

- JORC Inferred Resource of 27.6 million tonnes, averaging 174ppm U_3O_8 (100ppm cut off) for a contained content of **10.6 million lbs U_3O_8** *
- Entire resource within 15 metres of surface
- Consistent body of mineralisation with minimal internal dilution

(*see ASX release dated 10 July 2008)



Corporate Information

Issued Capital: 69m Ordinary Shares
3m Employee Options

Market Cap: \$13.7m @ \$0.20/share

Cash (30/6/09): \$2.3m

The Drivers for Investment...

- ✓ Largest exploration landholder in the region that hosts Kintyre uranium deposit & Nifty copper mine
- ✓ 10 million pound, near surface U_3O_8 Inferred Resource at Hillview
- ✓ Experienced and dedicated team - demonstrated rapid project progression
- ✓ **Major diamond drill program planned at the Paterson Project commencing September 2009**

Disclaimer & Compliance Statement

This presentation has been prepared by Encounter Resources Limited (“Encounter”). The information contained in this presentation is a professional opinion only and is given in good faith. Certain information in this document has been derived from third parties and though Encounter has no reason to believe that it is not accurate, reliable or complete, it has not been independently audited or verified by Encounter.

Any forward-looking statements included in this document involve subjective judgement and analysis and are subject to uncertainties, risks and contingencies, many of which are outside the control of, and maybe unknown to Encounter. In particular, they speak only as of the date of this document, they assume the success of Encounter’s strategies, and they are subject to significant regulatory, business, competitive and economic uncertainties and risks. Actual future events may vary materially from the forward looking statements and the assumptions on which the forward looking statements are based. Recipients of this document (“Recipients”) are cautioned to not place undue reliance on such forward-looking statements.

Encounter makes no representation or warranty as to the accuracy, reliability or completeness of information in this document and does not take responsibility for updating any information or correcting any error or omission which may become apparent after this document has been issued.

To the extent permitted by law, Encounter and its officers, employees, related bodies corporate and agents (“Agents”) disclaim all liability, direct, indirect or consequential (and whether or not arising out of the negligence, default or lack of care of Encounter and/or any of its Agents) for any loss or damage suffered by a Recipient or other persons arising out of, or in connection with, any use or reliance on this presentation or information.

The information in this report that relates to Exploration Results is based on information compiled by Mr. Peter Bewick who is a Member of the Australasian Institute of Mining and Metallurgy. Mr. Bewick is a full time employee of Encounter Resources Ltd and has sufficient experience which is relevant to the style of mineralisation under consideration to qualify as a Competent Person as defined in the 2004 Edition of the 'Australian Code for Reporting of Exploration Results, Mineral Resources and Ore Reserves'. Mr. Bewick consents to the inclusion in the presentation of the matters based on his information in the form and context in which it appears.

The information in this presentation that relates to Mineral Resources for the Hillview Uranium Project, is based on information compiled by Mr Neil Inwood who is employed by Coffey Mining Ltd. Mr Peter Bewick from Encounter has consented to a joint sign off for the Resource, Mr Bewick taking responsibility for the quality and reliability of the drillhole database and Mr Inwood is responsible for the grade estimate and classification of the resource. Messrs Inwood and Bewick have sufficient experience which is relevant to the style of mineralisation and type of deposit under consideration and to the activity which they have undertaken to qualify as a Competent Person as defined in the 2004 Edition of the “Australasian Code for Reporting of Mineral Resources and Ore Reserves”. Mr Bewick has reviewed the form and context in which the resource information appears and consents to the inclusion in this presentation.