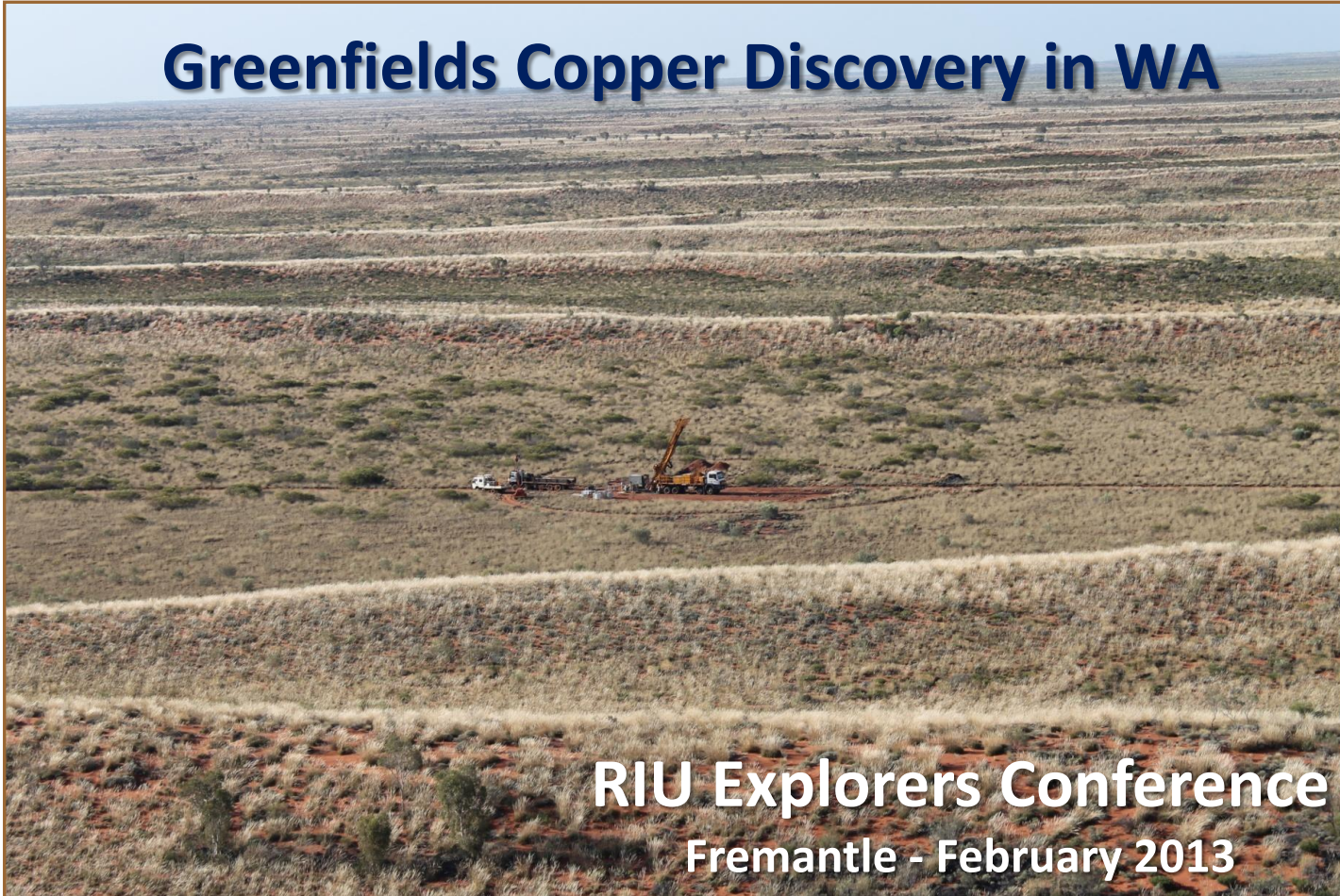




encounter
RESOURCES LIMITED

ASX : ENR

Greenfields Copper Discovery in WA



RIU Explorers Conference
Fremantle - February 2013

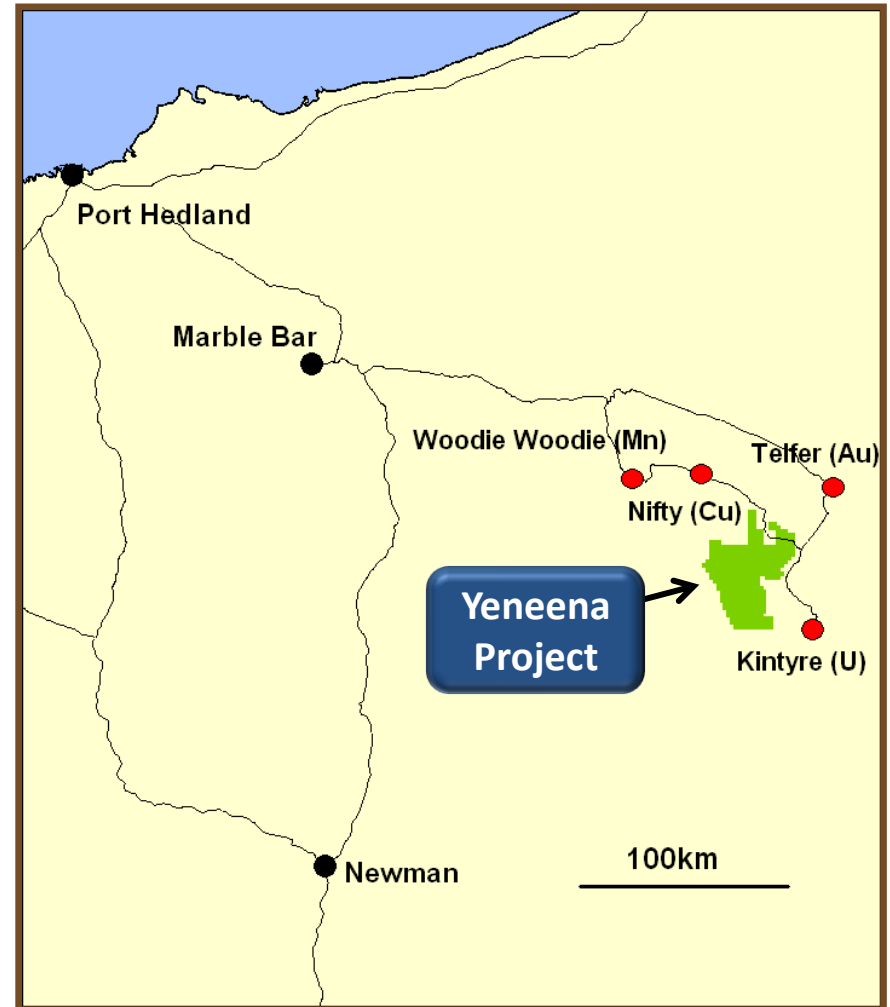


encounter
RESOURCES LIMITED



The Investment Opportunity

- Major land position in Proterozoic sedimentary basin (1400km²)
- Surrounded by major mineral deposits (Au-Cu, Cu, U and Mn)
- Greenfields copper discovery 11km long and growing
- “In ground investment” - 30,000m drilled in 2012
- Experienced team of former WMC executives



Corporate Information

Board

Paul Chapman - Chairman
Will Robinson - Managing Director
Peter Bewick - Exploration Director
Jon Hronsky - Non-Executive Director
Kevin Hart / Dan Travers - Company Sec.

Issued Capital

114.2m Ordinary Shares
8.1m Employee Options

Market Cap.

A\$18.8m @ A\$0.165/share

Cash (31/12/12)

A\$1.8m



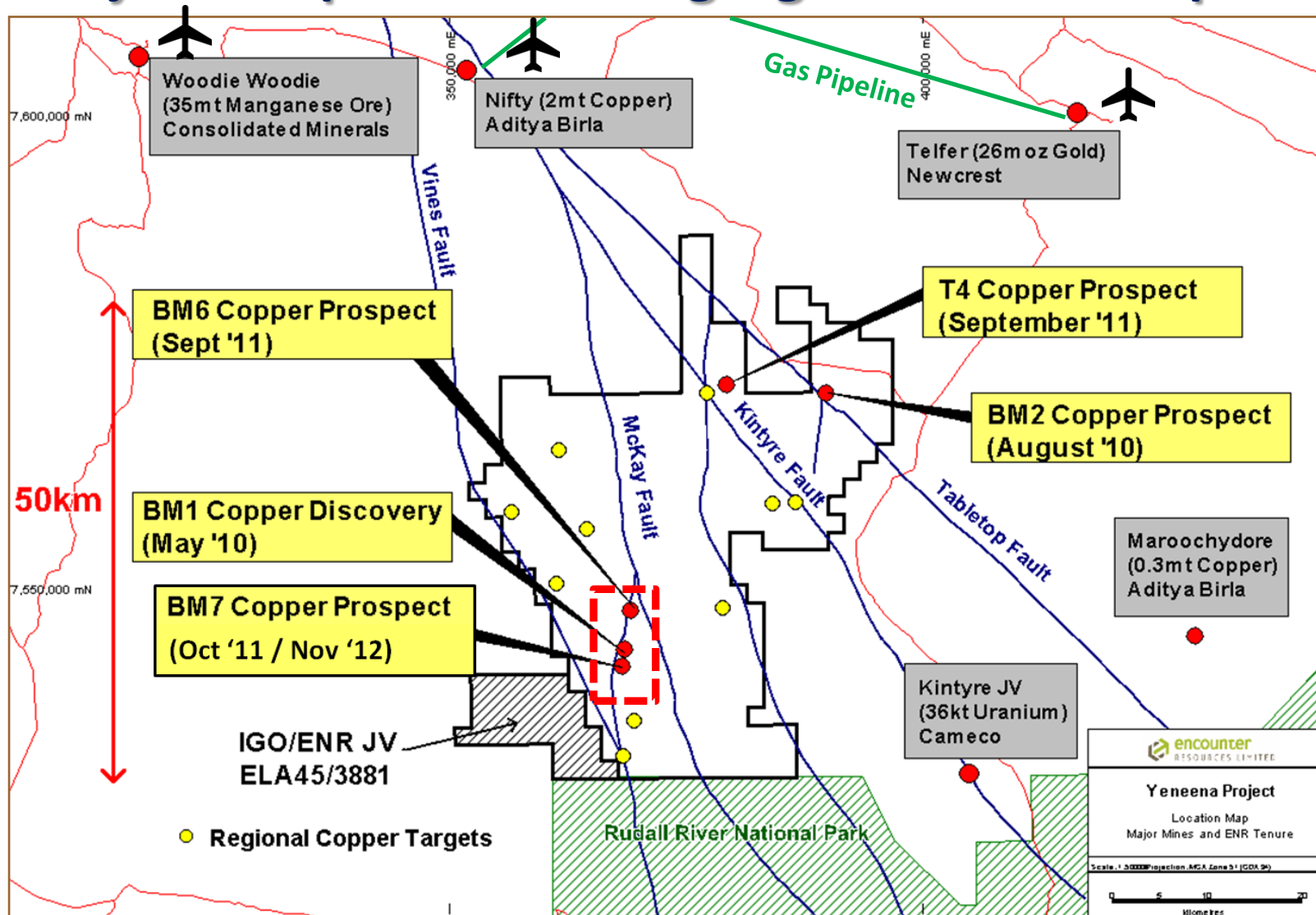
Sand cover has inhibited previous exploration



encounter
RESOURCES LIMITED



Major land position amongst giant mineral deposits



BM1 - BM7 Prospects

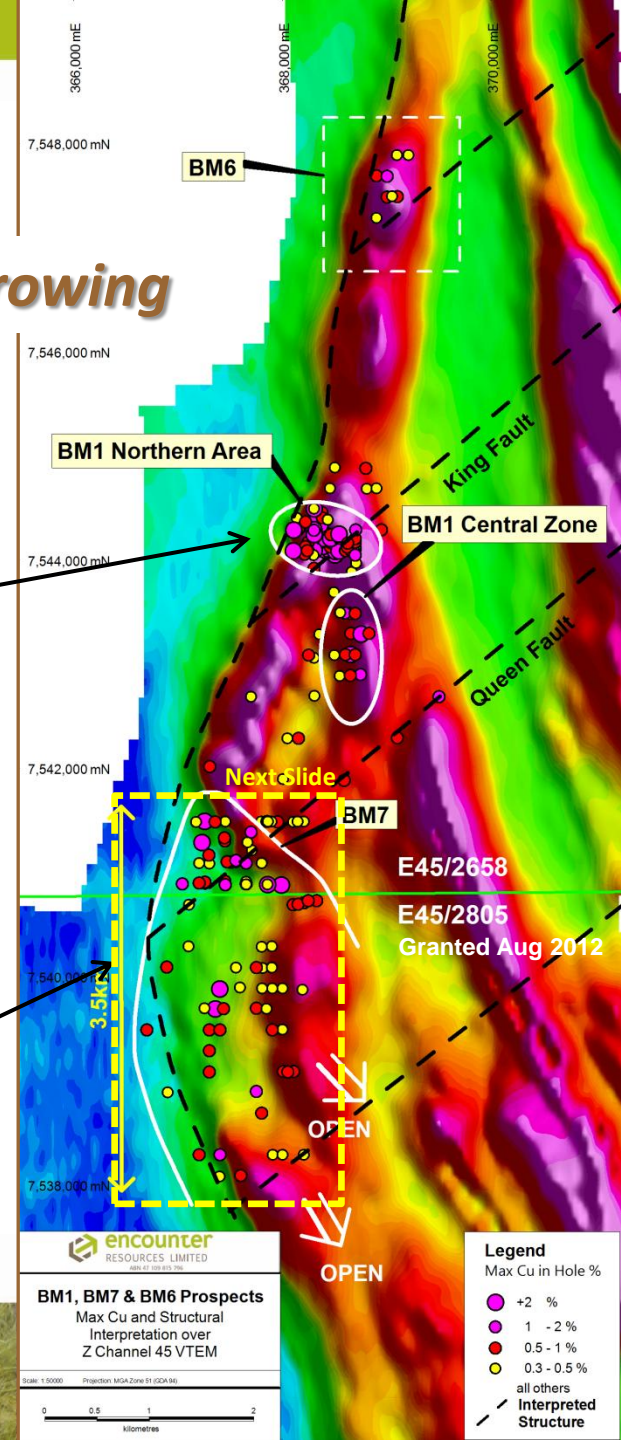
Copper mineral system 11km long and growing

BM1 - coherent zone of near surface copper oxide mineralisation

- 10m @ 6.8% Cu from 32m
- 20m @ 2.0% Cu from 22m
- 8m @ 3.6% Cu from 18m
- 4m @ 5.5% Cu from 66m

BM7 - New copper discovery 3km south of BM1 in 2012

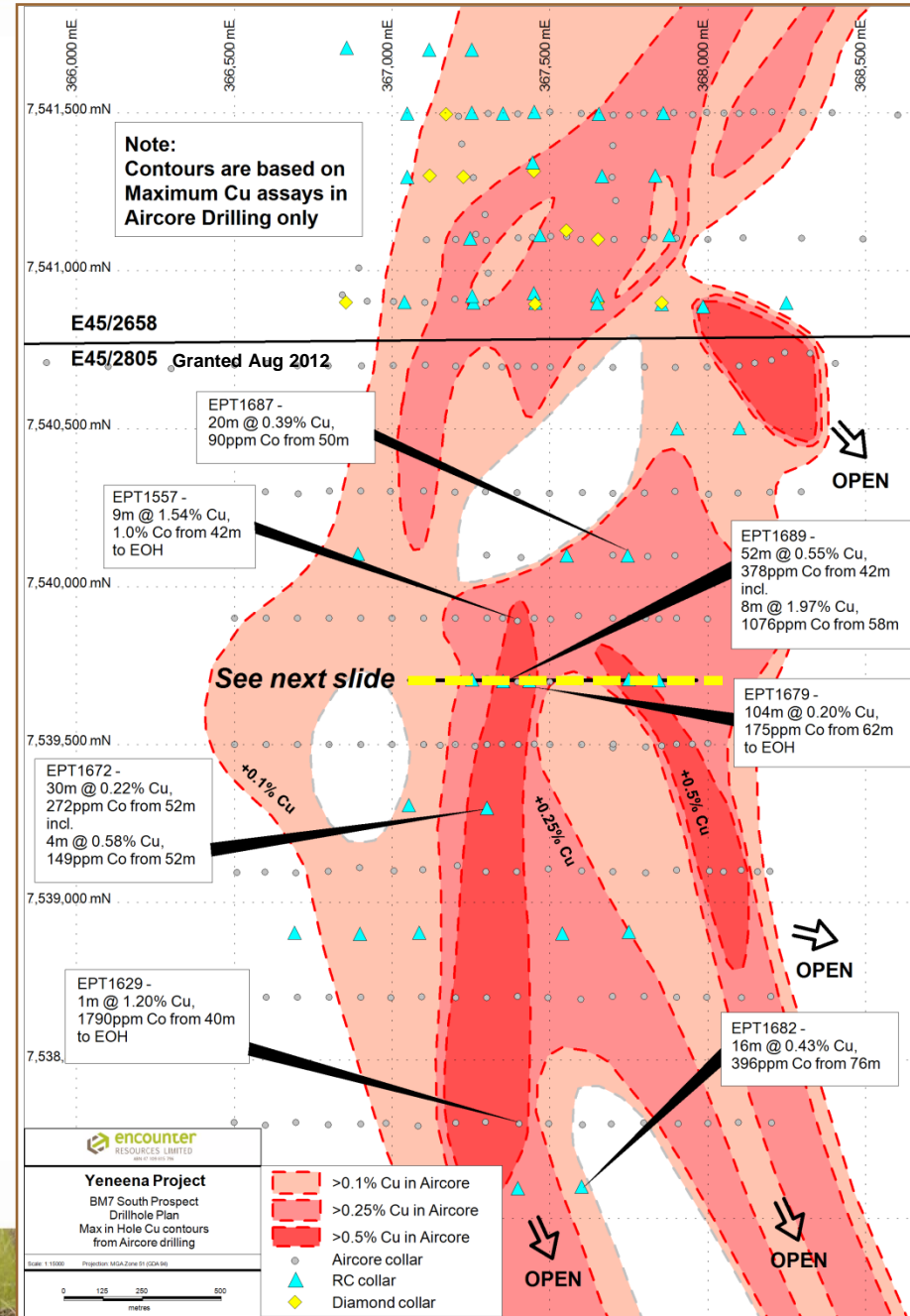
- 52m @ 0.6% Cu incl. 8m @ 2.0% Cu
- 9m @ 1.5% Cu, 1.0% Co to EOH
- 34m @ 0.6% Cu incl. 10m @ 1.6% Cu
- 73m @ 0.4% Cu incl. 8m @ 1.0% Cu
- 34m @ 0.5% Cu incl. 14m @ 0.8% Cu



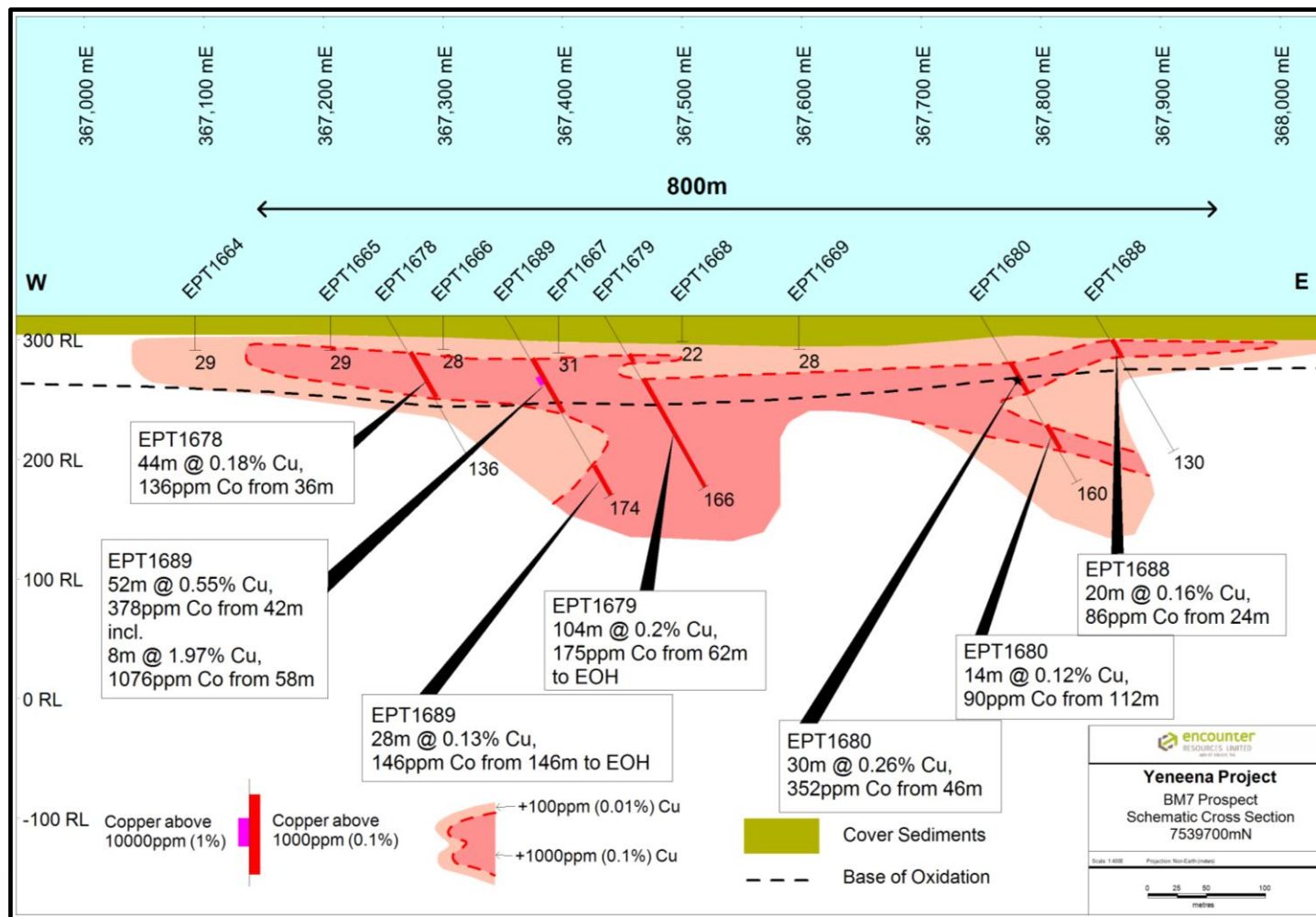
BM7 Prospect

Extensive "End of Hole" Copper-Cobalt

- Aircore drilling new tenement Oct 2012:
 - 9m @ 1.54% Cu & 1.0% Co from 42m to EOH
 - 6m @ 0.41% Cu & 438ppm Co from 26m to EOH
 - 8m @ 0.52% Cu & 364ppm Co from 76m to EOH
 - 34m @ 0.43% Cu & 238ppm Co from 32m to EOH
 - 15m @ 0.46% Cu & 412ppm Co from 28m to EOH
- RC drilling new tenement Nov/Dec 2012:
 - 52m @ 0.55% Cu incl. 8m @ 2.0% Cu
- 3.5km long target zone coincident with a major flexure in the McKay Fault
- Mineralisation open south and east

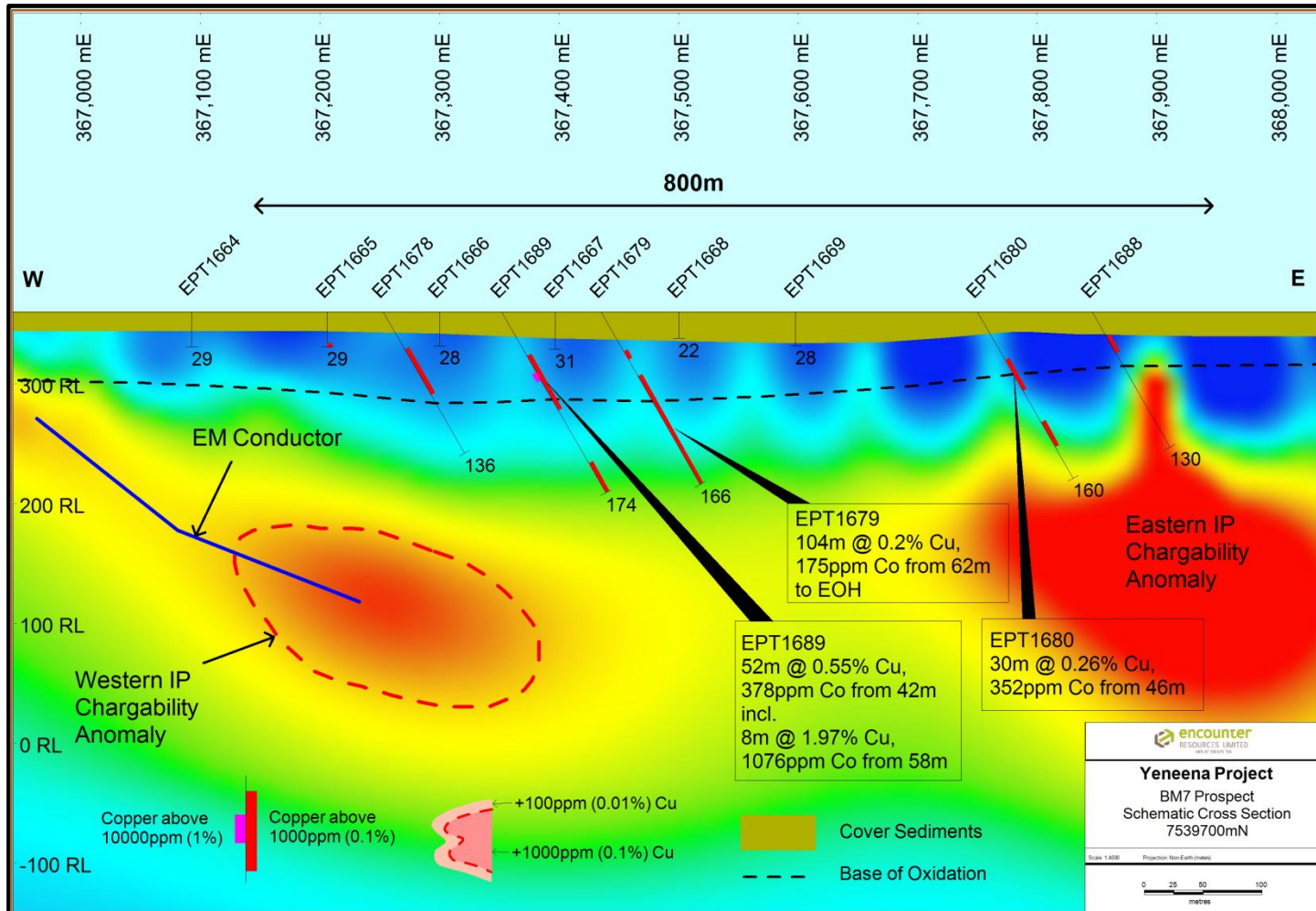


BM7 Prospect – RC Drill Section



BM7 Prospect – RC Drill Section with IP

Western IP corridor semi-coincident to EM anomaly adjacent to supergene copper



BM1 - BM7 Prospects

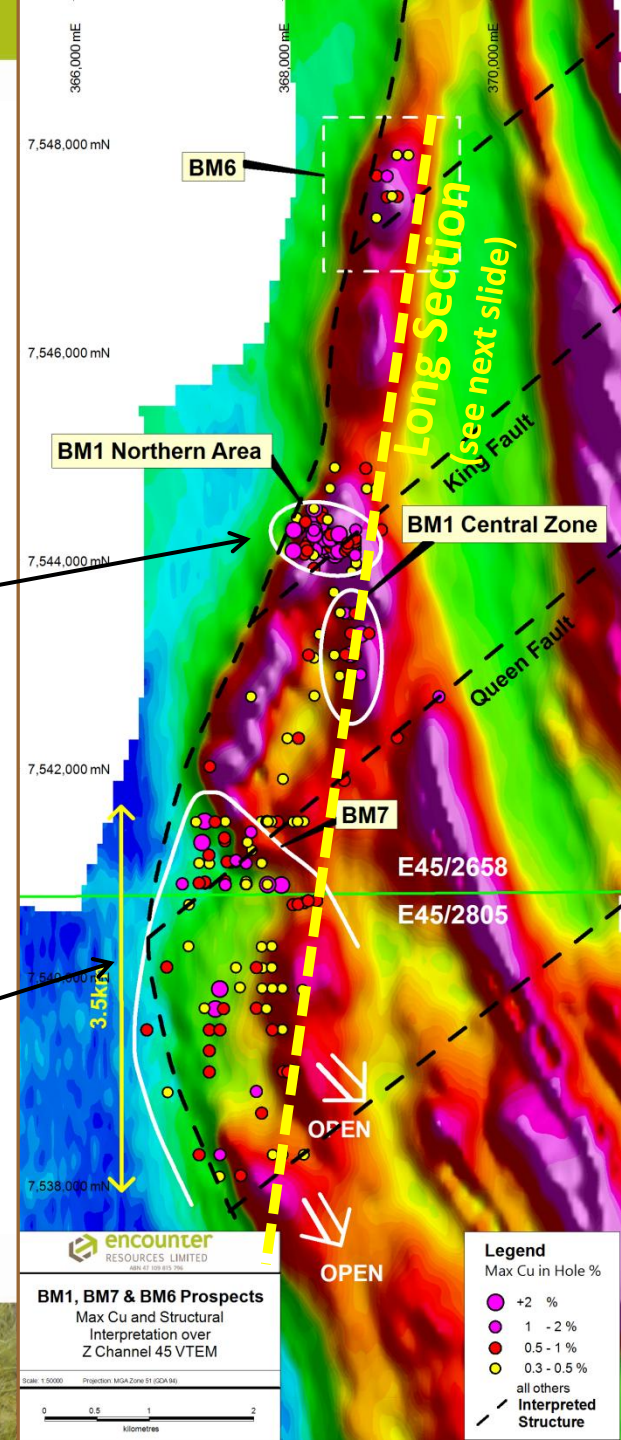
Copper mineral system 11km long and growing

BM1 - coherent zone of near surface copper oxide mineralisation

- 10m @ 6.8% Cu from 32m
- 20m @ 2.0% Cu from 22m
- 8m @ 3.6% Cu from 18m
- 4m @ 5.5% Cu from 66m

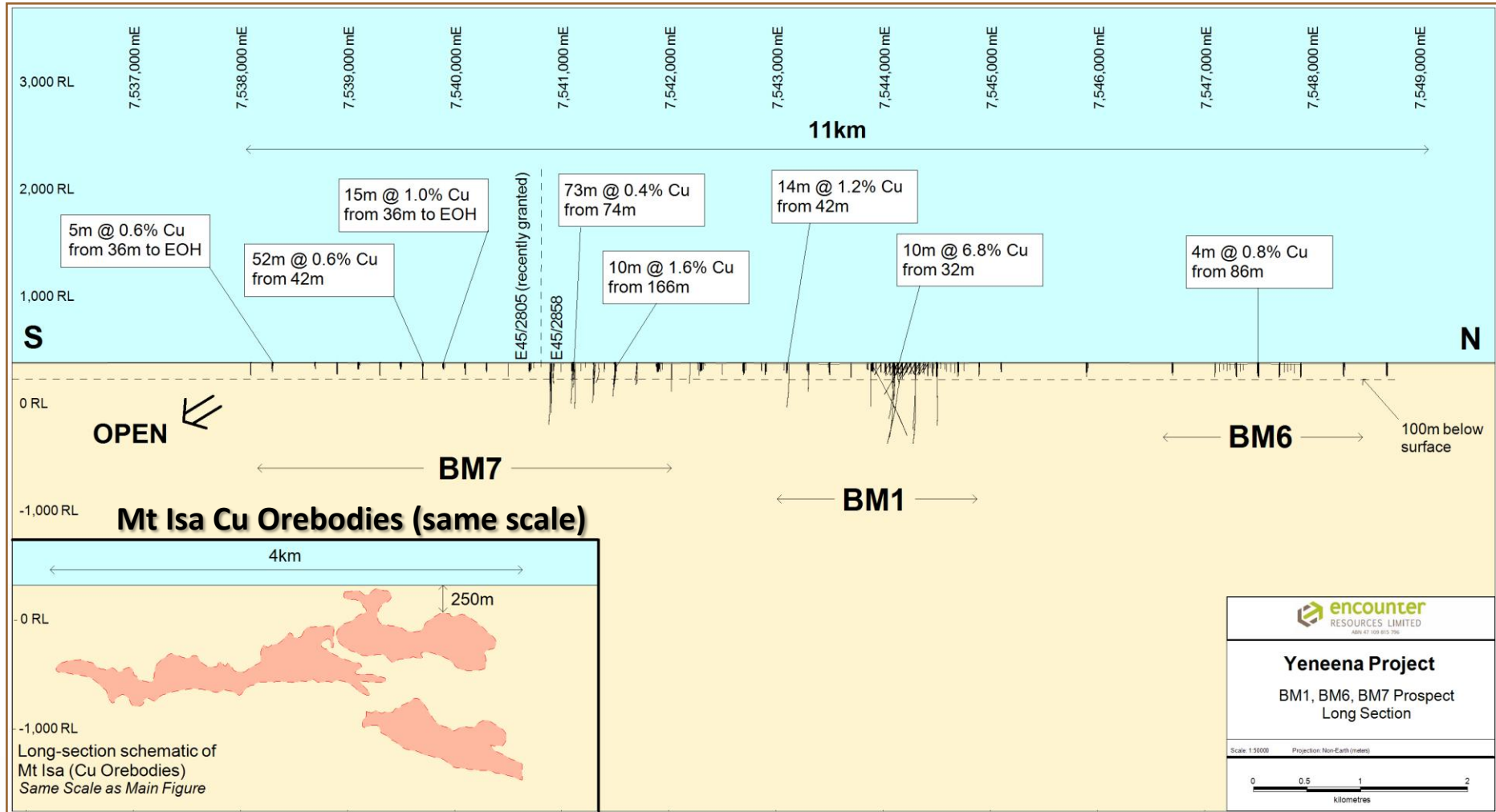
BM7 - New copper discovery 3km south of BM1 in 2012

- 52m @ 0.6% Cu incl. 8m @ 2.0% Cu
- 9m @ 1.5% Cu, 1.0% Co to EOH
- 34m @ 0.6% Cu incl. 10m @ 1.6% Cu
- 73m @ 0.4% Cu incl. 8m @ 1.0% Cu
- 34m @ 0.5% Cu incl. 14m @ 0.8% Cu



Shallow drilling defines major new Cu-Co mineral system

Regional Long Section BM6 to BM1 to BM7



Yeneena Copper Discovery Timeline



2008-09

Airborne EM
Regional geochem
Target generation

2010

Greenfields copper
oxide discoveries at
BM1

2011

Discovery of copper
sulphides at BM1

New copper oxide
discoveries at BM6 & BM7
BM7 copper sulphides

2012

Large scale, copper
discovery at BM7
Regional copper
targets defined

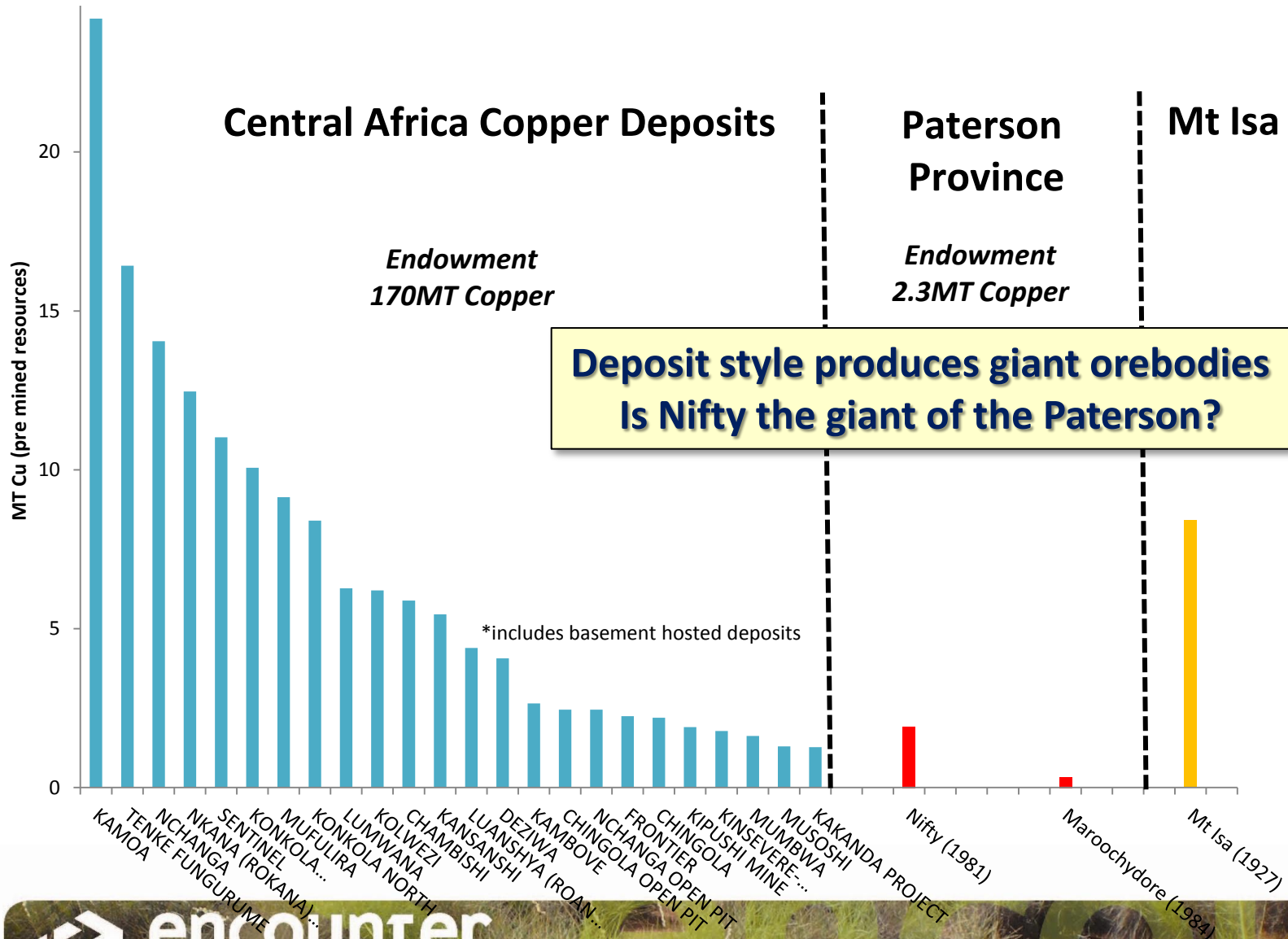
2013 Objectives

Define high grade
copper sulphides
at BM7
Test regional
targets south and
east of BM7



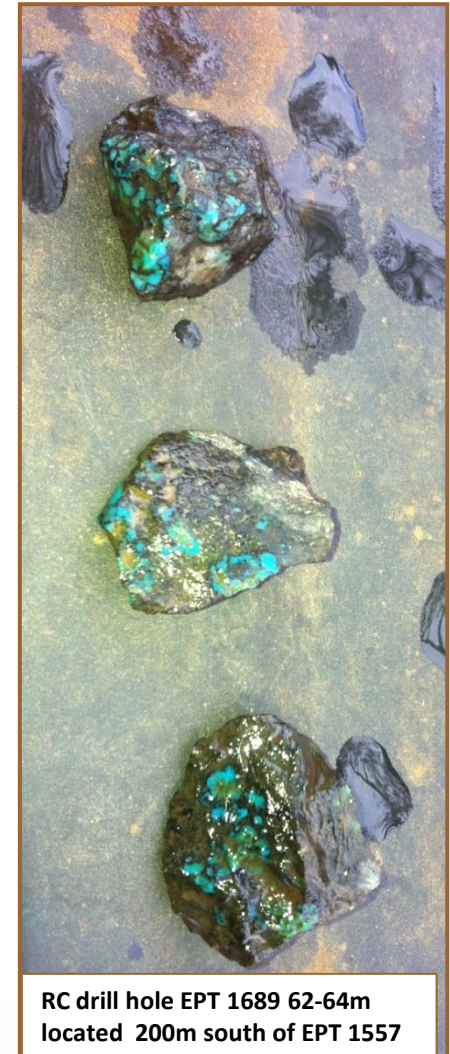
encounter
RESOURCES LIMITED

Sediment Hosted Copper Deposits



Yeneena – Australia's Next Great Copper District?

- ***Advanced stage copper exploration***
- ***Large scale system over 11km long***
- ***High grade near surface intersections***
- ***Strengthening and widening to south***
- ***First world mining jurisdiction***
- ***Drilling recommencing Mar/Apr 2013***



RC drill hole EPT 1689 62-64m
located 200m south of EPT 1557

Disclaimer & Compliance Statement

This presentation has been prepared by Encounter Resources Limited (“Encounter”). The information contained in this presentation is a professional opinion only and is given in good faith. Certain information in this document has been derived from third parties and though Encounter has no reason to believe that it is not accurate, reliable or complete, it has not been independently audited or verified by Encounter.

Any forward-looking statements included in this document involve subjective judgement and analysis and are subject to uncertainties, risks and contingencies, many of which are outside the control of, and maybe unknown to Encounter. In particular, they speak only as of the date of this document, they assume the success of Encounter’s strategies, and they are subject to significant regulatory, business, competitive and economic uncertainties and risks. Actual future events may vary materially from the forward looking statements and the assumptions on which the forward looking statements are based. Recipients of this document (“Recipients”) are cautioned to not place undue reliance on such forward-looking statements.

Encounter makes no representation or warranty as to the accuracy, reliability or completeness of information in this document and does not take responsibility for updating any information or correcting any error or omission which may become apparent after this document has been issued.

To the extent permitted by law, Encounter and its officers, employees, related bodies corporate and agents (“Agents”) disclaim all liability, direct, indirect or consequential (and whether or not arising out of the negligence, default or lack of care of Encounter and/or any of its Agents) for any loss or damage suffered by a Recipient or other persons arising out of, or in connection with, any use or reliance on this presentation or information.

The information in this report that relates to Exploration Results is based on information compiled by Mr. Peter Bewick who is a Member of the Australasian Institute of Mining and Metallurgy. Mr. Bewick is a full time employee of Encounter Resources Ltd and has sufficient experience which is relevant to the style of mineralisation under consideration to qualify as a Competent Person as defined in the 2004 Edition of the 'Australian Code for Reporting of Exploration Results, Mineral Resources and Ore Reserves'. Mr. Bewick consents to the inclusion in the presentation of the matters based on his information in the form and context in which it appears.