



**encounter**  
RESOURCES LIMITED

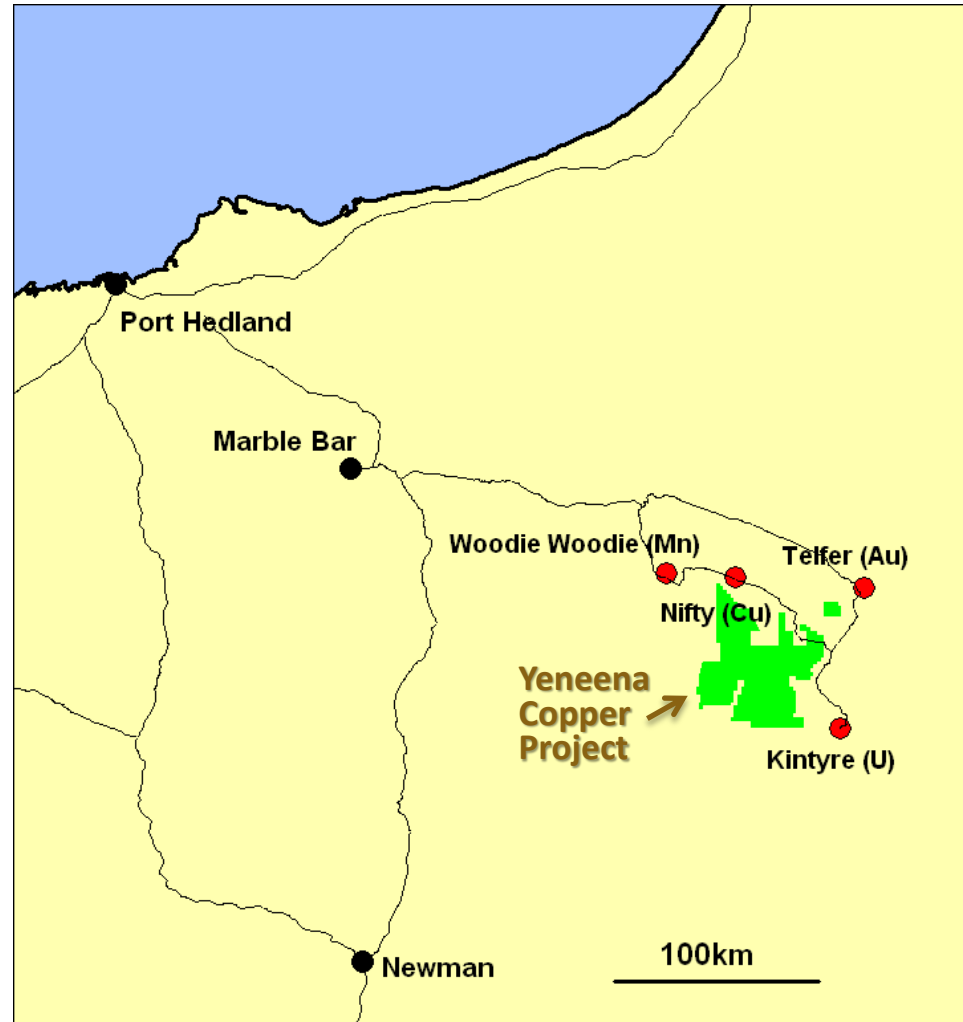
# Mining 2013

Brisbane  
24 October 2013

ASX : ENR

# INVESTMENT SUMMARY

- Major land position in Proterozoic sedimentary basin (1900km<sup>2</sup>)
- Surrounded by major mineral deposits (Au-Cu, Cu, U and Mn)
- Greenfields copper discovery 14km long and growing
- Experienced team of former WMC executives
- Well funded explorer
- US\$20m farm-in with Antofagasta plc (2 tenements, 25% of Yeneena)



# CORPORATE INFORMATION

## Board



Paul Chapman - Chairman

Will Robinson - Managing Director

Peter Bewick - Exploration Director

Jon Hronsky - Non-Executive Director

Kevin Hart / Dan Travers - Company Sec.

## Issued Capital

132.5m Ordinary Shares

9.5m Employee Options

## Market Cap.

A\$30m @ A\$0.23/share

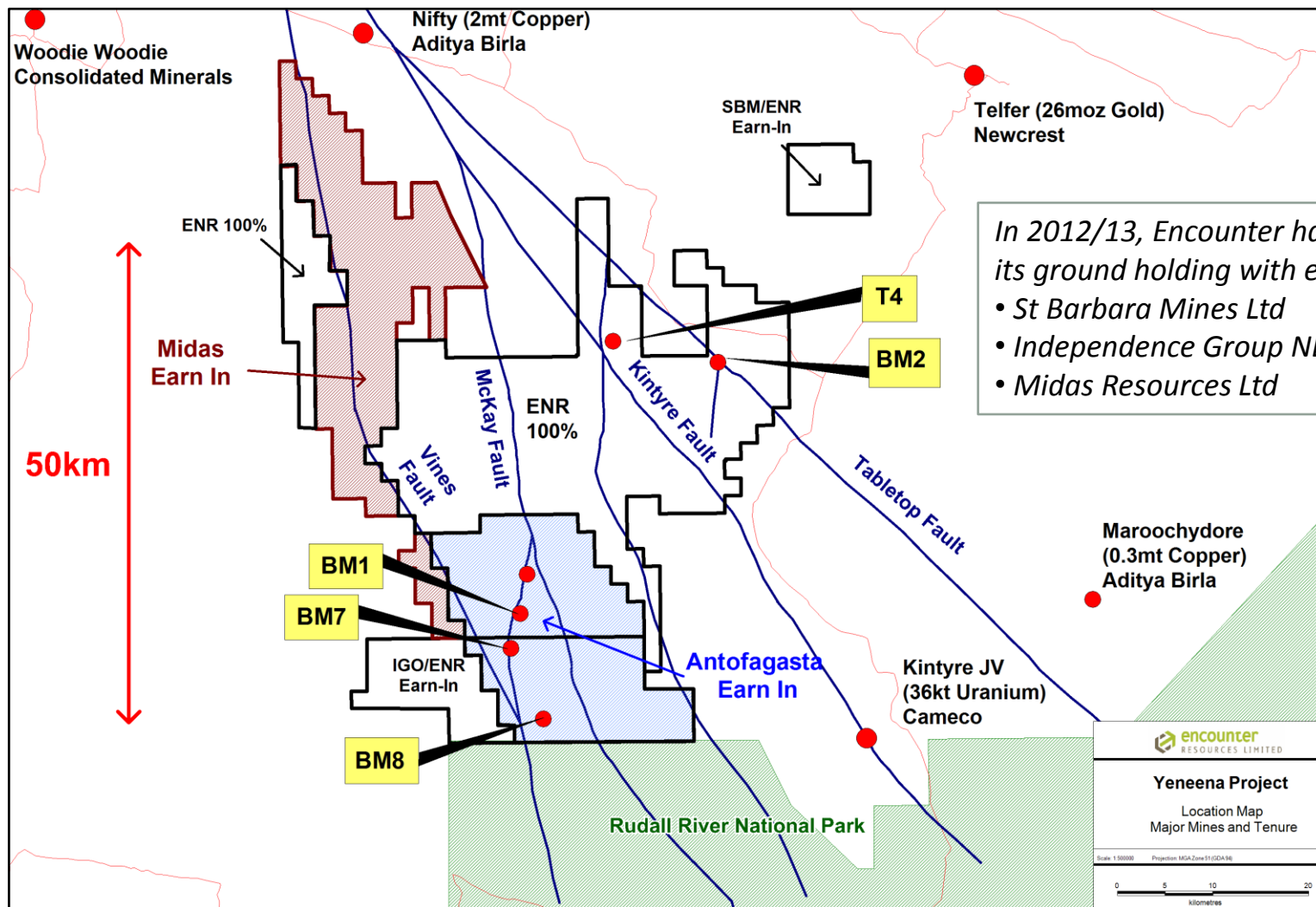
## Cash

A\$4.5m (30 Sept 2013)



# YENEENA PROJECT

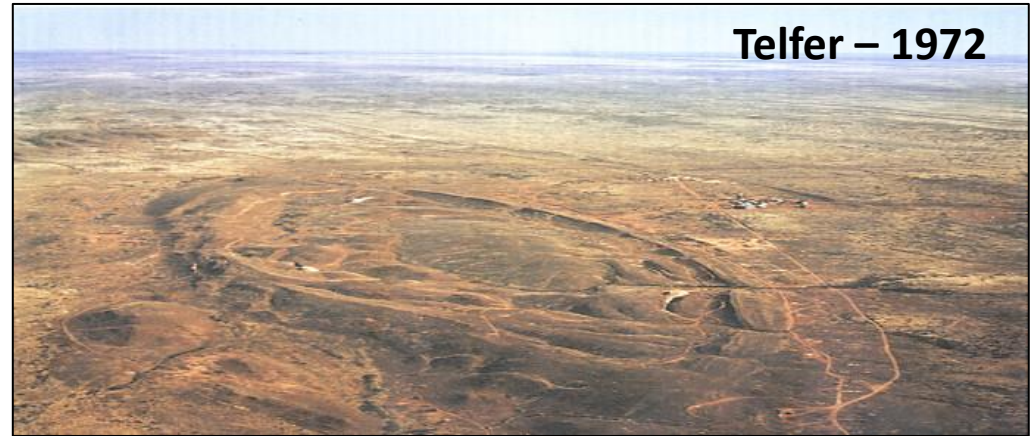
## Major land position amongst giant mineral deposits



In 2012/13, Encounter has expanded its ground holding with earn-ins:

- St Barbara Mines Ltd
- Independence Group NL
- Midas Resources Ltd

# HISTORICAL DISCOVERIES



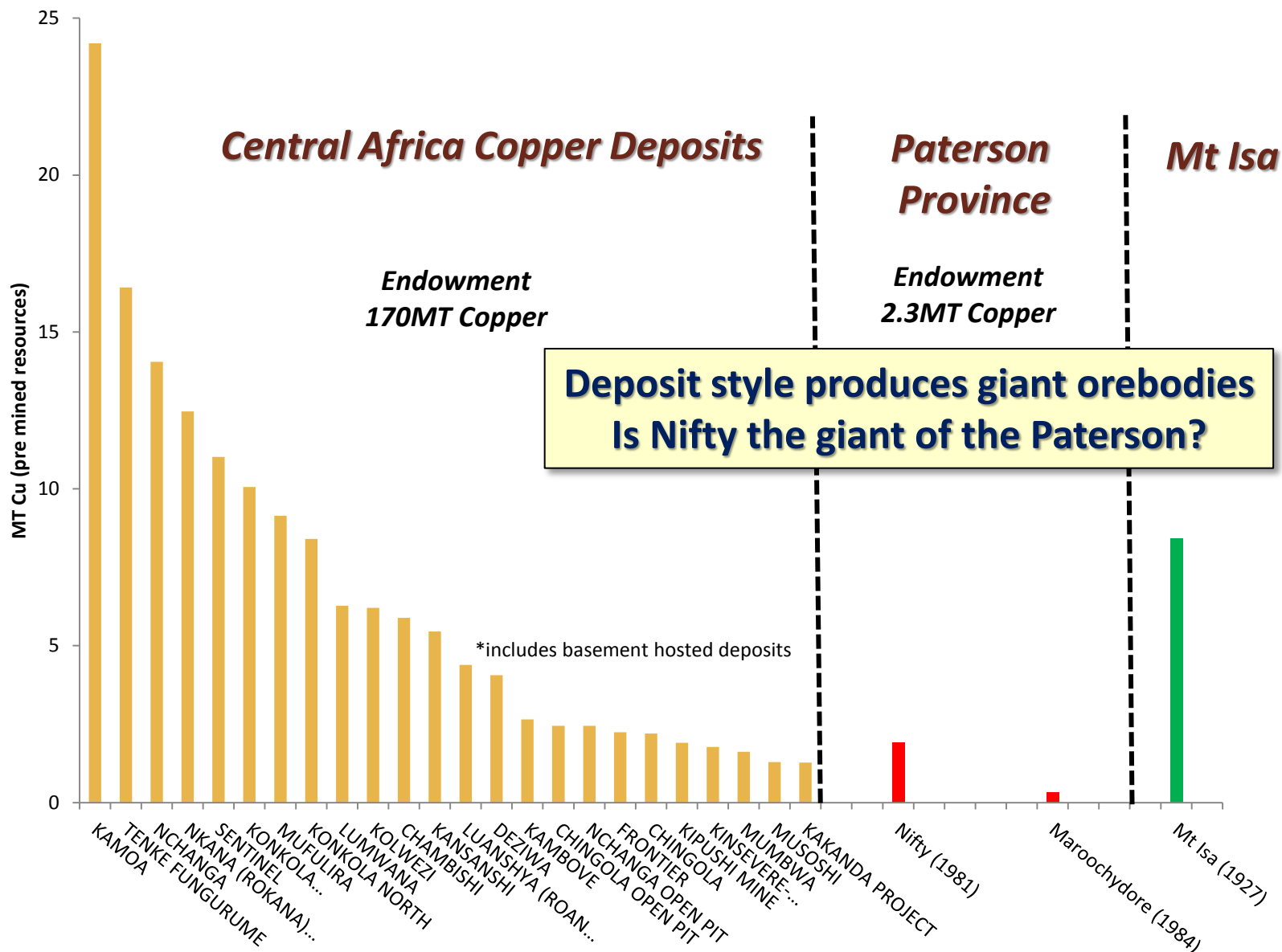
# YENEENA PROJECT



**Under cover exploration— a new search space**

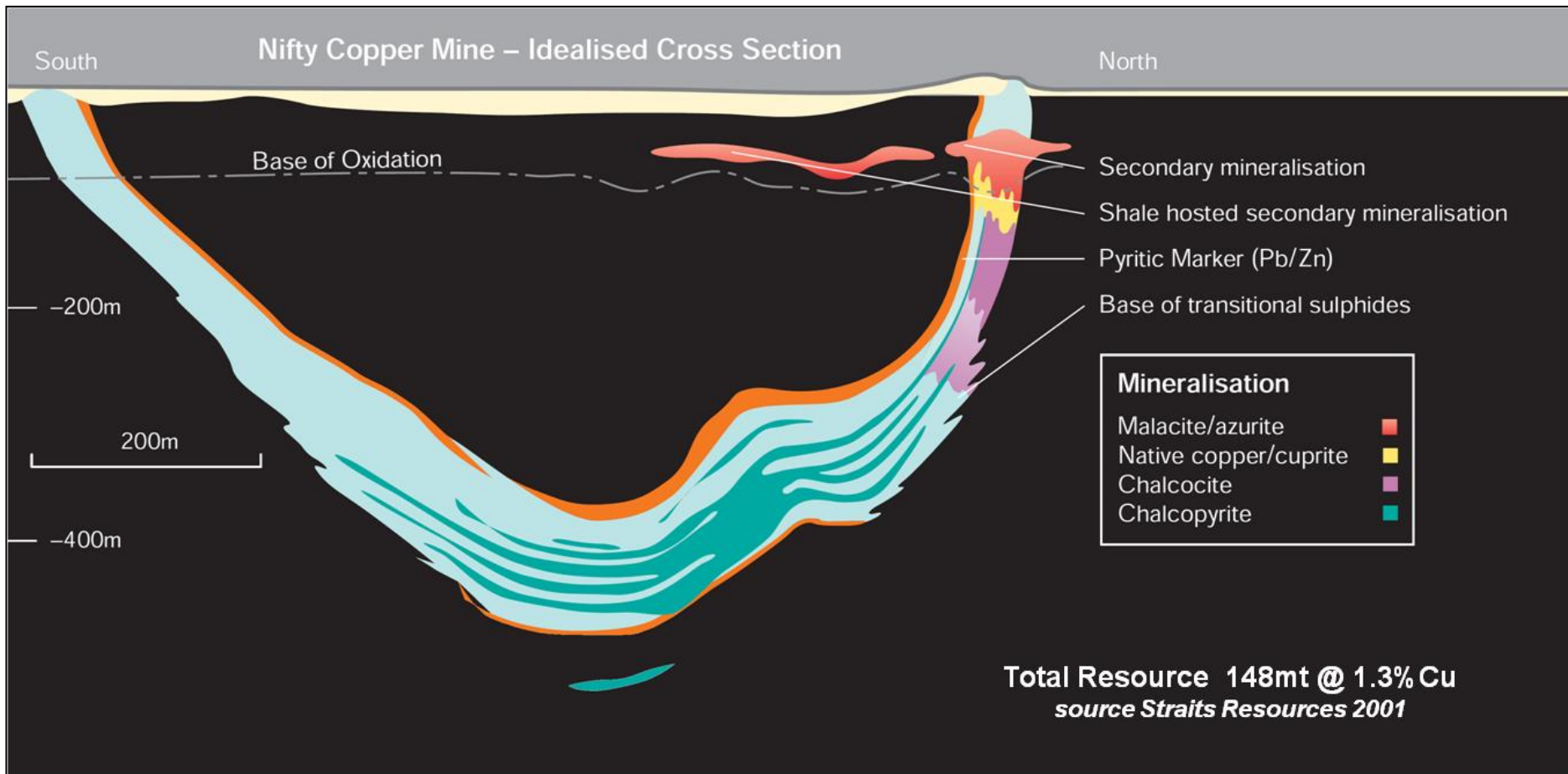


# SEDIMENT HOSTED COPPER



# NIFTY COPPER DEPOSIT

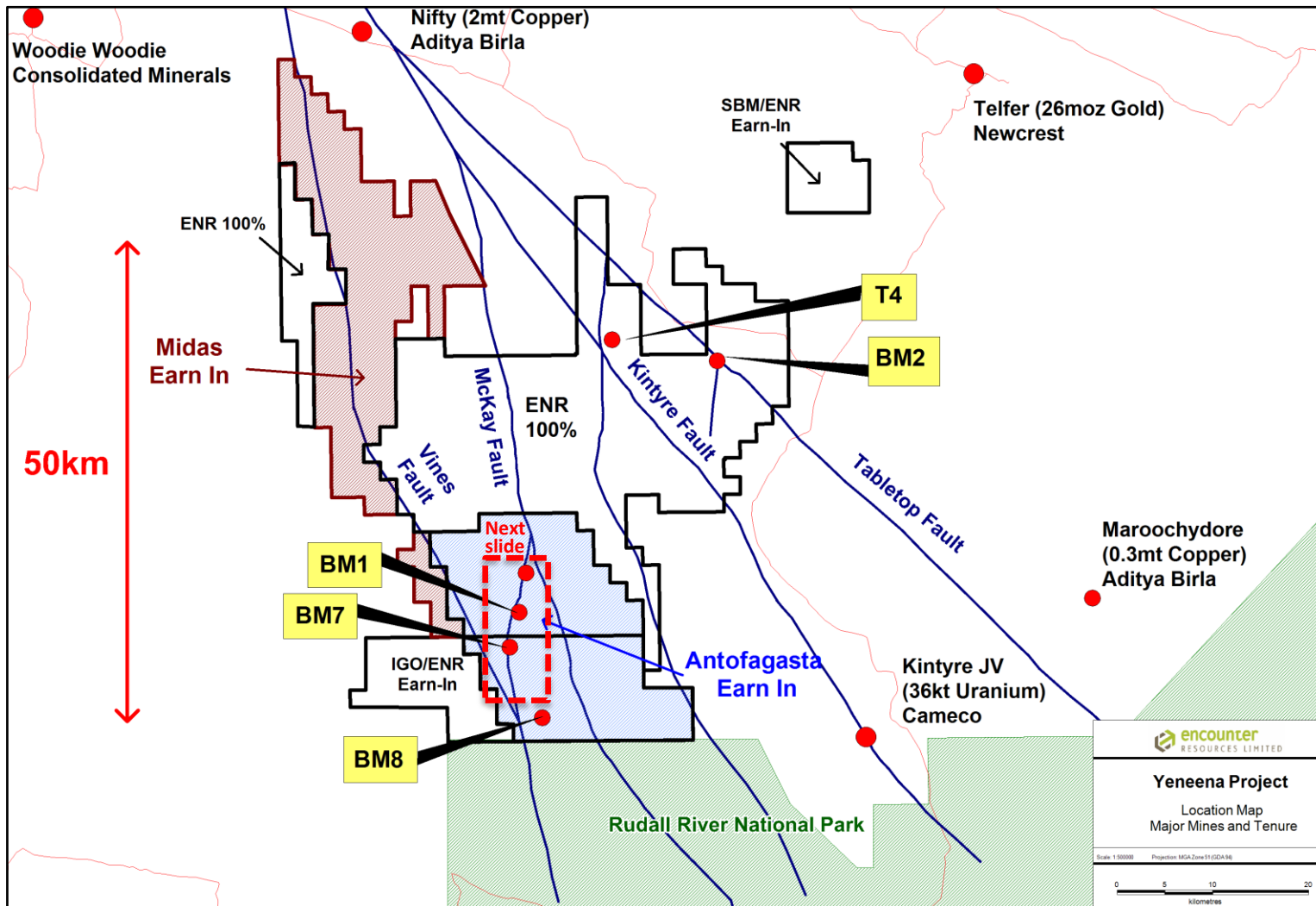
***Nifty copper sulphide mineralisation is a shallow plunging body with the strongest mineralisation located at the keel of a synform***





# YENEENA PROJECT

## BM1-BM7 Copper Discovery Location Plan



# BM1 - BM7 PROSPECTS

## Copper mineral system 14km long and growing

### BM1

Coherent zone of near surface copper oxide mineralisation

10m @ 6.8% Cu from 32m

8m @ 3.6% Cu from 18m

20m @ 2.0% Cu from 22m

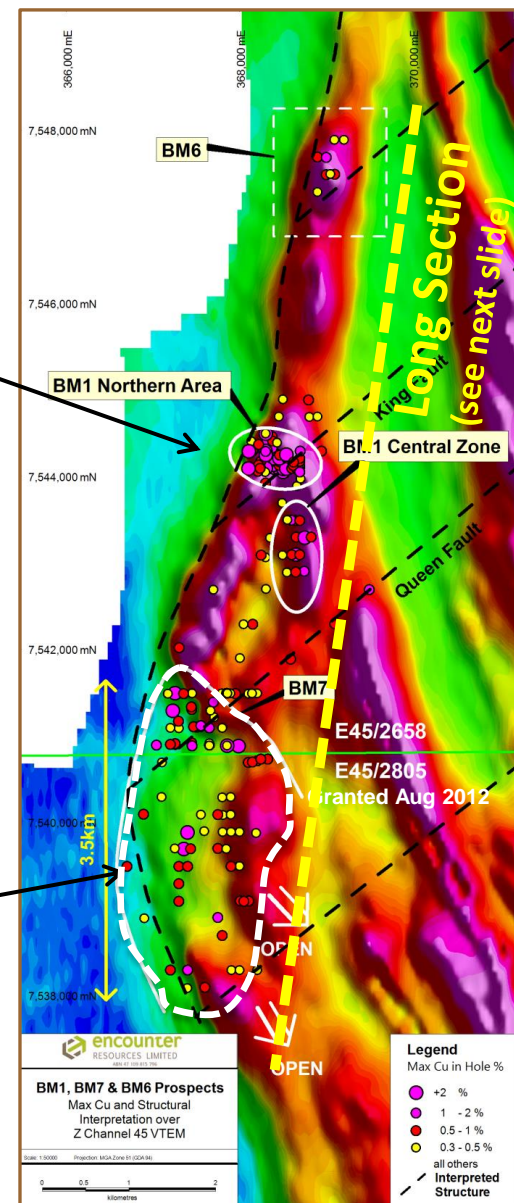


### BM7

6 x 3km copper system still growing

First joint diamond drill program intersects high grade Cu sulphide

5m @ 2.5% Cu incl. 0.7m @ 11% Cu



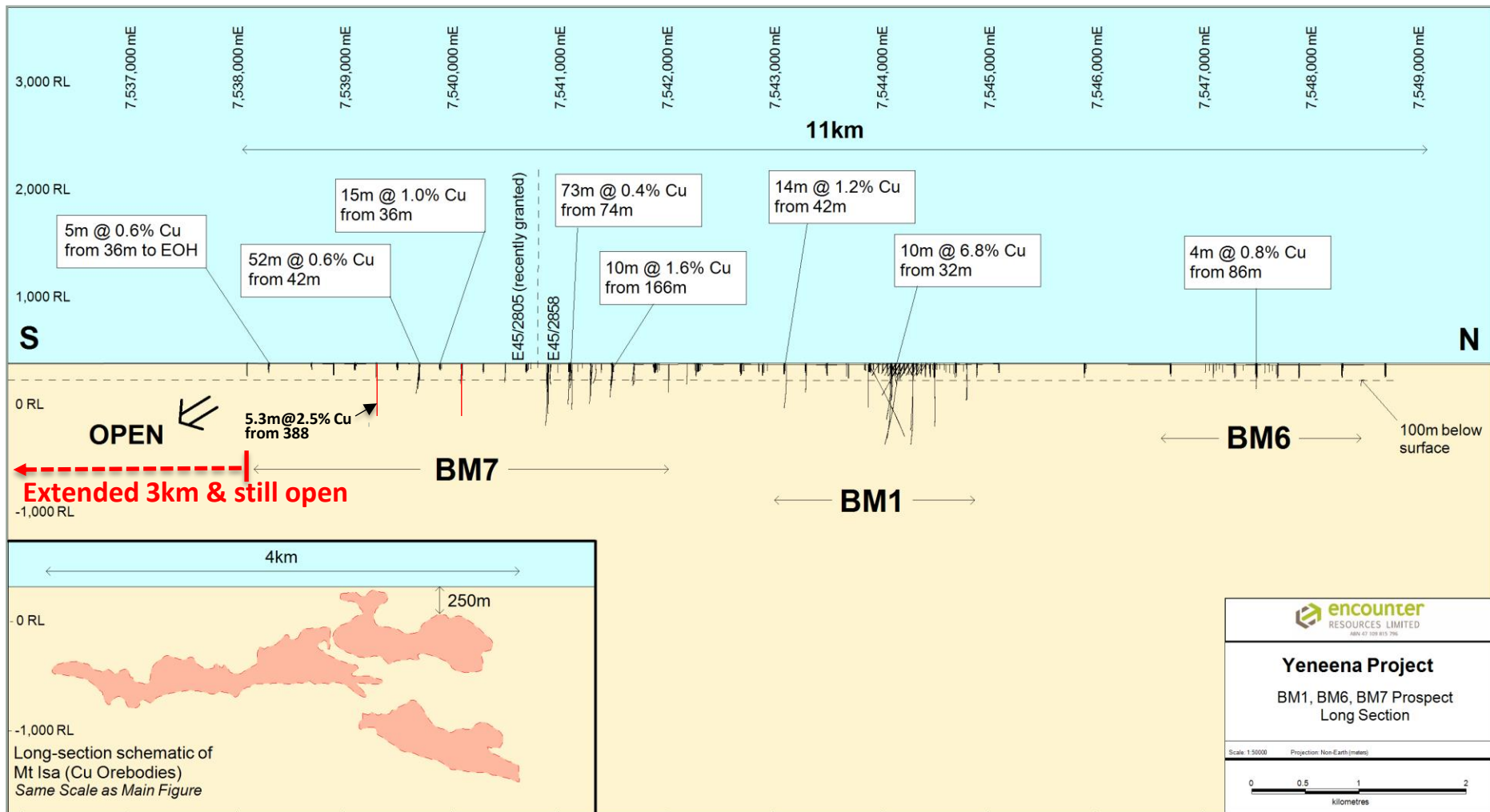
Antofagasta farming-in



# LONG SECTION BM1-BM7



## Shallow drilling defines major new Copper-Cobalt mineral system



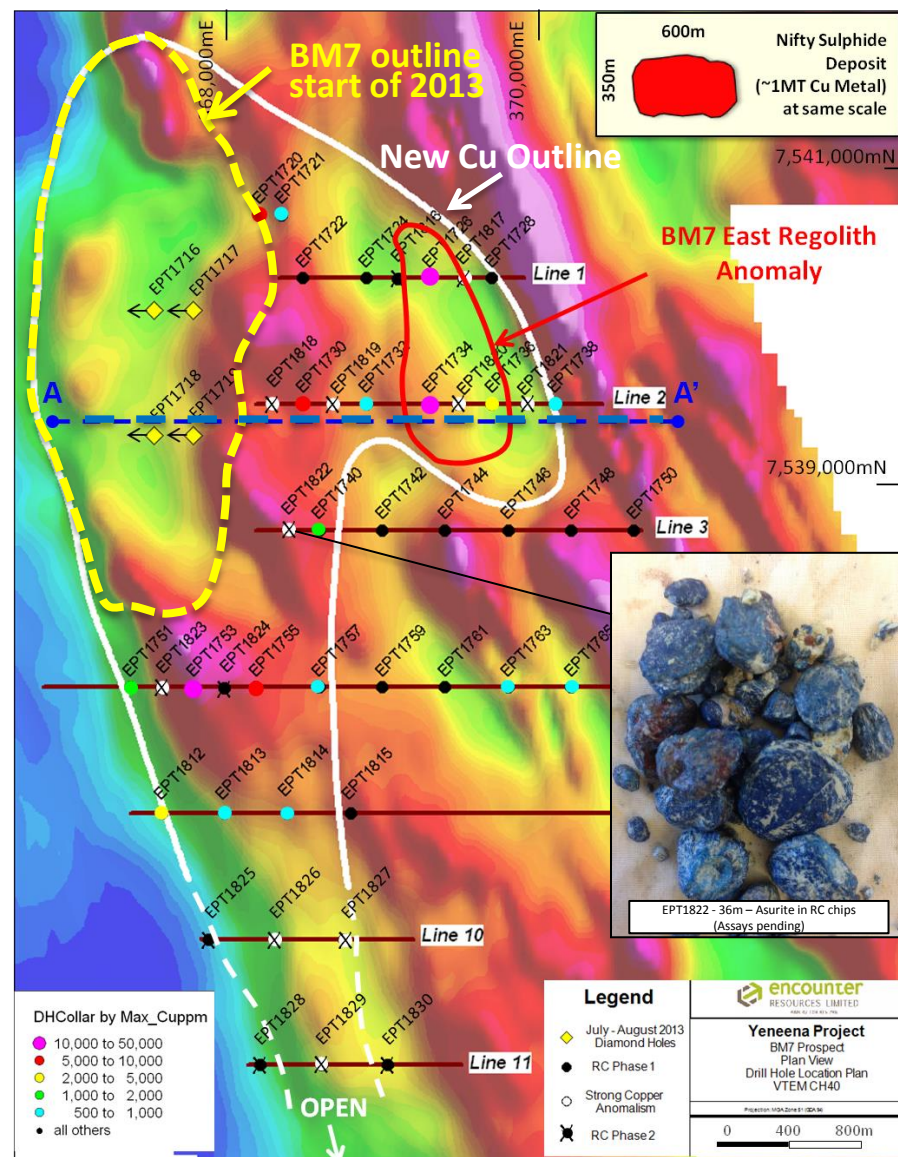
**Antofagasta farming-in**



# BM7 DRILL LOCATION PLAN

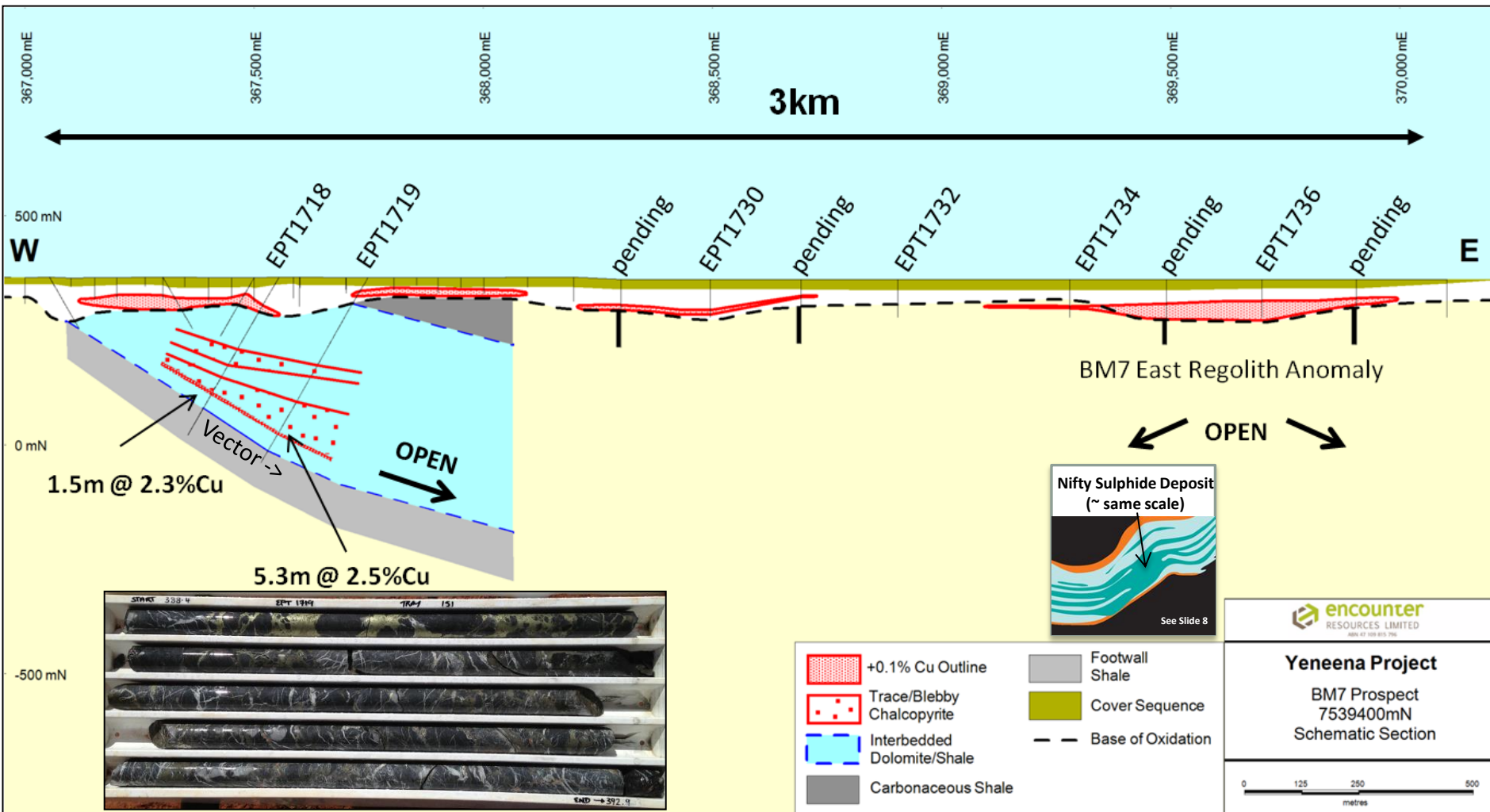
## *BM7 mineral system significantly extended south and east*

- New zone of copper oxides east of the BM7 discovery
  - 18m @ 0.4% Cu incl. 2m @ 1.2% Cu from 46m
  - 22m @ 0.2% Cu incl. 2m @ 1.2% Cu from 58m
  - 22m @ 0.3% Cu incl. 2m @ 1.6% Cu from 18m
- System extended a further 3km south and remains open
- “BM7 East Regolith Anomaly” potential eastern limb of mineralised synform
- Assays from follow up RC drilling expected Nov 2013



# BM7 SCHEMATIC SECTION A-A'

*Diamond drill program has confirmed depth extensive copper sulphide mineralisation and established the high grade potential of BM7 system*



# BM7 – 2013 MILESTONES

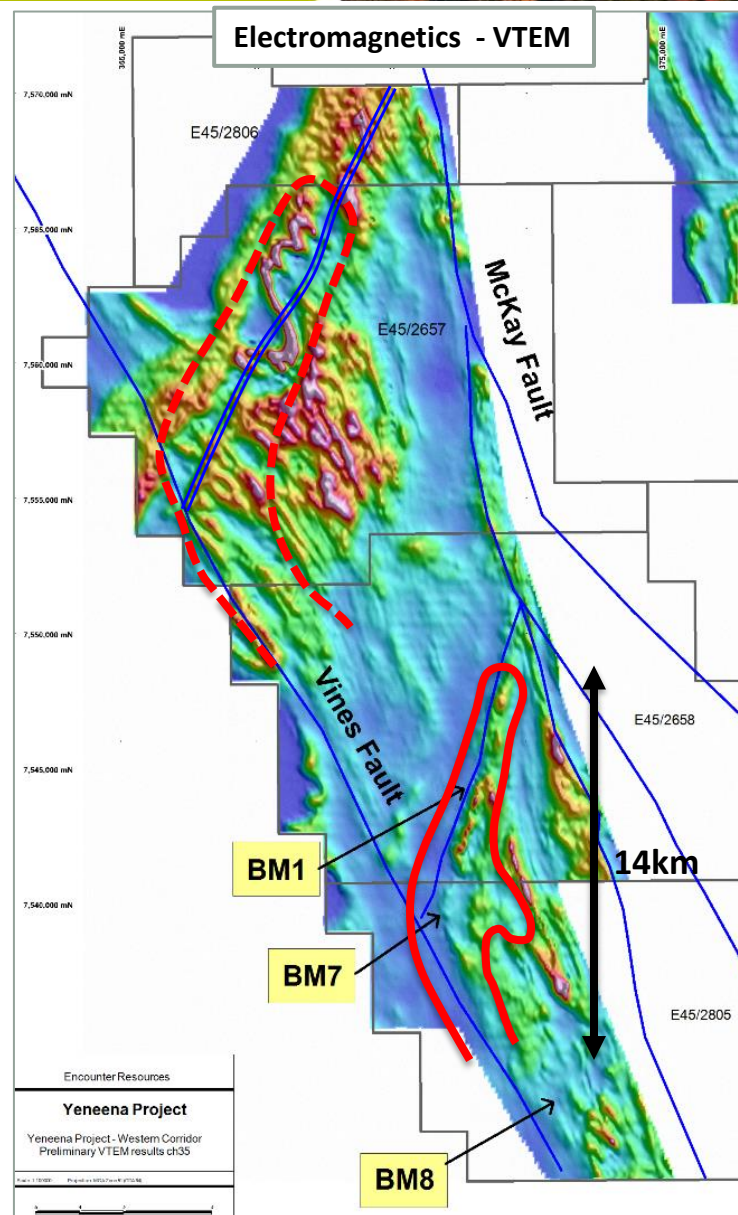
- ✓ **Tenement granted in August 2012**
- ✓ **Initial exploration confirmed large scale copper potential**
- ✓ **Attracted quality partner - copper major Antofagasta plc**
- ✓ **Shallow drilling outlined 6km x 3km copper system - still growing**
- ✓ **First joint diamond drilling produced high grade copper sulphide**
- ✓ **Geological similarities with 2MT Nifty copper deposit**



# REGIONAL TARGETS - NORTH

## *Untested targets north of BM1-BM7*

- 100% Encounter held ground
- VTEM Survey completed June 2013
- Significant north-east trending structure that mirrors the BM1-BM7 copper system
- Shallow sand cover
- Minimal previous exploration – a handful of RAB holes – Anomalous in copper
- Initial RC drill test October 2013



# DISCOVERY TIMELINE



**2008-09**

Airborne EM  
Regional geochem  
Target generation

**2010**

Greenfields copper  
oxide discoveries at  
BM1

**2011**

Discovery of copper  
sulphides at BM1

New copper oxide  
discoveries at BM6 & BM7

First BM7 copper sulphides

**2012**

Large scale, copper  
discovery at BM7

Regional copper  
targets defined

**2013 Objectives**

High grade copper  
sulphides at BM7

Test targets south  
and east of BM7

Test Regional Targets  
(100% ENR)





## *Yeneena – Australia's Next Great Copper District?*

- *Large scale system over 14km long and growing*
- *High grade near surface intersections*
- *Key ground position secured (>1900km<sup>2</sup>)*
- *First world mining jurisdiction*
- *Major mining company funding through Antofagasta farm-in*
- *Well funded & highly active greenfield explorer*

## ***Disclaimer & Compliance Statement***

This presentation has been prepared by Encounter Resources Limited (“Encounter”). The information contained in this presentation is a professional opinion only and is given in good faith. Certain information in this document has been derived from third parties and though Encounter has no reason to believe that it is not accurate, reliable or complete, it has not been independently audited or verified by Encounter.

Any forward-looking statements included in this document involve subjective judgement and analysis and are subject to uncertainties, risks and contingencies, many of which are outside the control of, and maybe unknown to Encounter. In particular, they speak only as of the date of this document, they assume the success of Encounter’s strategies, and they are subject to significant regulatory, business, competitive and economic uncertainties and risks. Actual future events may vary materially from the forward looking statements and the assumptions on which the forward looking statements are based. Recipients of this document (“Recipients”) are cautioned to not place undue reliance on such forward-looking statements.

Encounter makes no representation or warranty as to the accuracy, reliability or completeness of information in this document and does not take responsibility for updating any information or correcting any error or omission which may become apparent after this document has been issued.

To the extent permitted by law, Encounter and its officers, employees, related bodies corporate and agents (“Agents”) disclaim all liability, direct, indirect or consequential (and whether or not arising out of the negligence, default or lack of care of Encounter and/or any of its Agents) for any loss or damage suffered by a Recipient or other persons arising out of, or in connection with, any use or reliance on this presentation or information.

The information in this report that relates to Exploration Results is based on information compiled by Mr. Peter Bewick who is a Member of the Australasian Institute of Mining and Metallurgy. Mr. Bewick is a full time employee of Encounter Resources Ltd and has sufficient experience which is relevant to the style of mineralisation under consideration to qualify as a Competent Person as defined in the 2004 Edition of the 'Australian Code for Reporting of Exploration Results, Mineral Resources and Ore Reserves'. Mr. Bewick consents to the inclusion in the presentation of the matters based on his information in the form and context in which it appears.

