

Investor Presentation

The directors of Encounter Resources Ltd (“**Encounter**” / “**the Company**”) are pleased to advise that the Company has today released an updated Investor Presentation.

A copy of the presentation is appended to this announcement and a version which includes commentary from Encounter Managing Director Will Robinson is available on the Company’s YouTube page at the following link: https://youtu.be/Z4rP_dflYT0

This announcement has been authorised for release by the Board of Encounter Resources Limited.

For further information, please contact:

Will Robinson
Managing Director
+61 8 9486 9455
contact@enrl.com.au

Michael Vaughan
Fivemark Partners
+61 422 602 720
michael.vaughan@fivemark.com.au

About Encounter

Encounter Resources Limited is one of the most productive project generation and active mineral exploration companies listed on the Australian Securities Exchange. Encounter’s primary focus is on discovering major gold and copper deposits in Australia.

Encounter holds a major ground position in the emerging Paterson Province where it is exploring for copper-gold deposits at its 100% owned Lamil Project and for copper-cobalt deposits at the Yeneena project with highly successful mining and exploration company IGO Limited (ASX:IGO).

Encounter controls a major land position the Tanami region covering over 100km of strike along a major structural corridor and the Aileron copper-gold-rare earths IOCG project in the West Arunta in WA.

In addition, Encounter moved early and aggressively to secure a series of camp scale, first mover opportunities in the Northern Territory (“NT”) based on their potential to contain large, sedimentary-hosted and IOCG style copper deposits. This includes the Elliott copper project which is being advanced in partnership with BHP via an earn-in and joint venture agreement.



encounter
RESOURCES LIMITED

Investor Update

May 2021

Copper and gold in Australia

**Collaborating with high quality partners
to make new discoveries**

ASX: ENR

Disclaimer and compliance statement

This presentation has been prepared by Encounter Resources Limited (“Encounter”). The information contained in this presentation is a professional opinion only and is given in good faith. Certain information in this document has been derived from third parties and though Encounter has no reason to believe that it is not accurate, reliable or complete, it has not been independently audited or verified by Encounter.

Any forward-looking statements included in this document involve subjective judgement and analysis and are subject to uncertainties, risks and contingencies, many of which are outside the control of, and maybe unknown to Encounter. In particular, they speak only as of the date of this document, they assume the success of Encounter’s strategies, and they are subject to significant regulatory, business, competitive and economic uncertainties and risks. Actual future events may vary materially from the forward looking statements and the assumptions on which the forward looking statements are based. Recipients of this document (“Recipients”) are cautioned to not place undue reliance on such forward-looking statements.

Encounter makes no representation or warranty as to the accuracy, reliability or completeness of information in this document and does not take responsibility for updating any information or correcting any error or omission which may become apparent after this document has been issued.

To the extent permitted by law, Encounter and its officers, employees, related bodies corporate and agents (“Agents”) disclaim all liability, direct, indirect or consequential (and whether or not arising out of the negligence, default or lack of care of Encounter and/or any of its Agents) for any loss or damage suffered by a Recipient or other persons arising out of, or in connection with, any use or reliance on this presentation or information.

The information in this report that relates to Exploration Results is based on information compiled by Mr. Peter Bewick who is a Member of the Australasian Institute of Mining and Metallurgy. Mr. Bewick holds shares and options in and is a full time employee of Encounter and has sufficient experience which is relevant to the style of mineralisation under consideration to qualify as a Competent Person as defined in the 2012 Edition of the 'Australian Code for Reporting of Exploration Results, Mineral Resources and Ore Reserves'. Mr Bewick consents to the inclusion in the report of the matters based on the information compiled by him, in the form and context in which it appears.

The Company confirms that it is not aware of any new information or data that materially affects the information in the relevant ASX releases and the form and context of the announcement has not materially changed. The Company confirms that the form and context in which the Competent Person’s findings are presented have not been materially modified from the original market announcements.

Certain exploration drilling results for BM1 were first disclosed under JORC code 2004. It has not been updated since to comply with the JORC code 2012 on the basis that the information has not materially changed.

The information in this report that relates to Exploration Results is based on information compiled by Mr. Peter Bewick who is a Member of the Australasian Institute of Mining and Metallurgy. Mr. Bewick is a full time employee of Encounter and has sufficient experience which is relevant to the style of mineralisation under consideration to qualify as a Competent Person as defined in the 2004 Edition of the 'Australian Code for Reporting of Exploration Results, Mineral Resources and Ore Reserves'. Mr Bewick consents to the inclusion in the report of the matters based on the information compiled by him, in the form and context in which it appears.

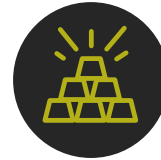
This announcement has been approved for release by the Board of Encounter.

The Encounter business model



PROJECT GENERATOR MODEL

Progress project pipeline with a mix of alliances, joint ventures and sole funding



TIER 1 TARGETS

Project generation and exploration targeting major gold and base metal discoveries in world-class mineral belts



HIGH QUALITY PARTNERS

Partner with leading mid-tier and major producers which have well supported, talented and highly resourced exploration teams



FAST ADOPTION OF NEW DATA AND TECHNOLOGIES

Fast mover, early adopter of new technologies and datasets



DATA DRIVEN INSIGHTS

Reduce exploration risk through cost effective and innovative data-driven techniques to rapidly prioritise and assess targets

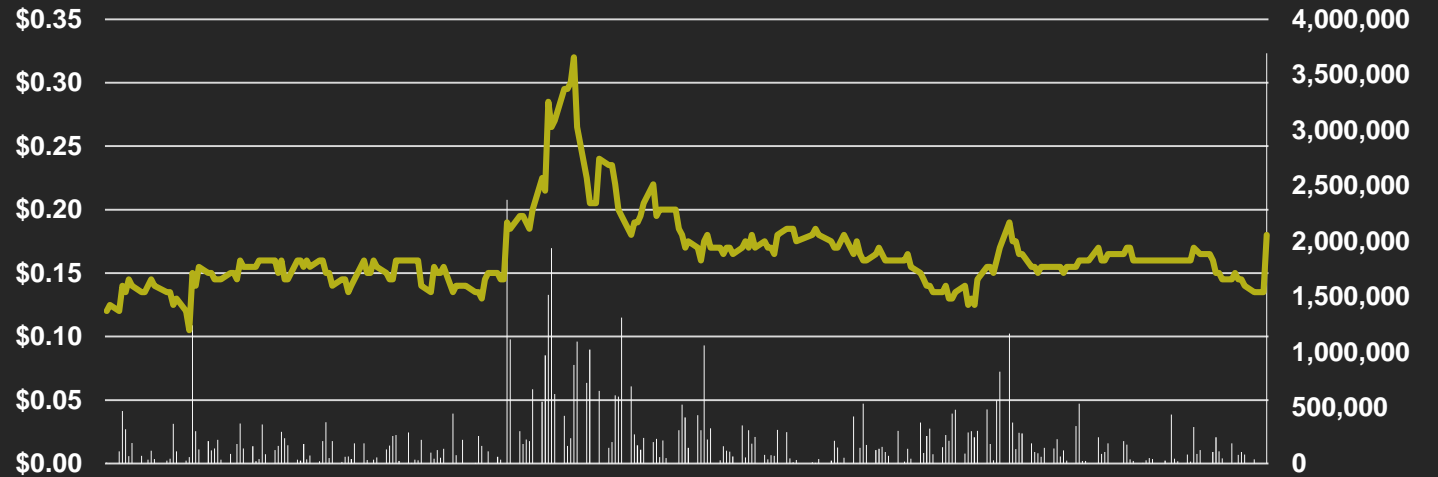
Creating value through project generation and discovery

Encounter at a glance

Capital structure

ASX ticker	ENR
Share price (21/05/2021)	\$0.18
Shares on issue	314M
Options	18M
Market capitalisation	~\$56.5M
Cash (31/03/21)	~\$6.5M
Listed investments	~\$1M
Enterprise value (net of cash and listed investments)	~\$49M

Share price – 12 months



Major shareholders

Board and Management	~14.2%
IGO	~8.2%
Silver Lake Resources	~5.3%



Mr Paul Chapman
Non Executive
Chairman
*B.Comm, ACA, Grad.
Dip. Tax, MAICD,
MAusIMM*



Mr Will Robinson
Managing Director
B.Comm, MAusIMM



Dr Jon Hronsky OAM
Non Executive
Director
*BAppSci, PhD,
MAusIMM, FSEG*



Mr Peter Bewick
Exploration Director
*B.Eng (Hons),
MAusIMM*



Mr Philip Crutchfield
Non Executive Director
*B.Comm., LL.B (Hons),
LL.M LSE*

A premier copper and gold exploration portfolio

Early mover positions in world-class minerals belts attracting world-class partners

Paterson Province - WA

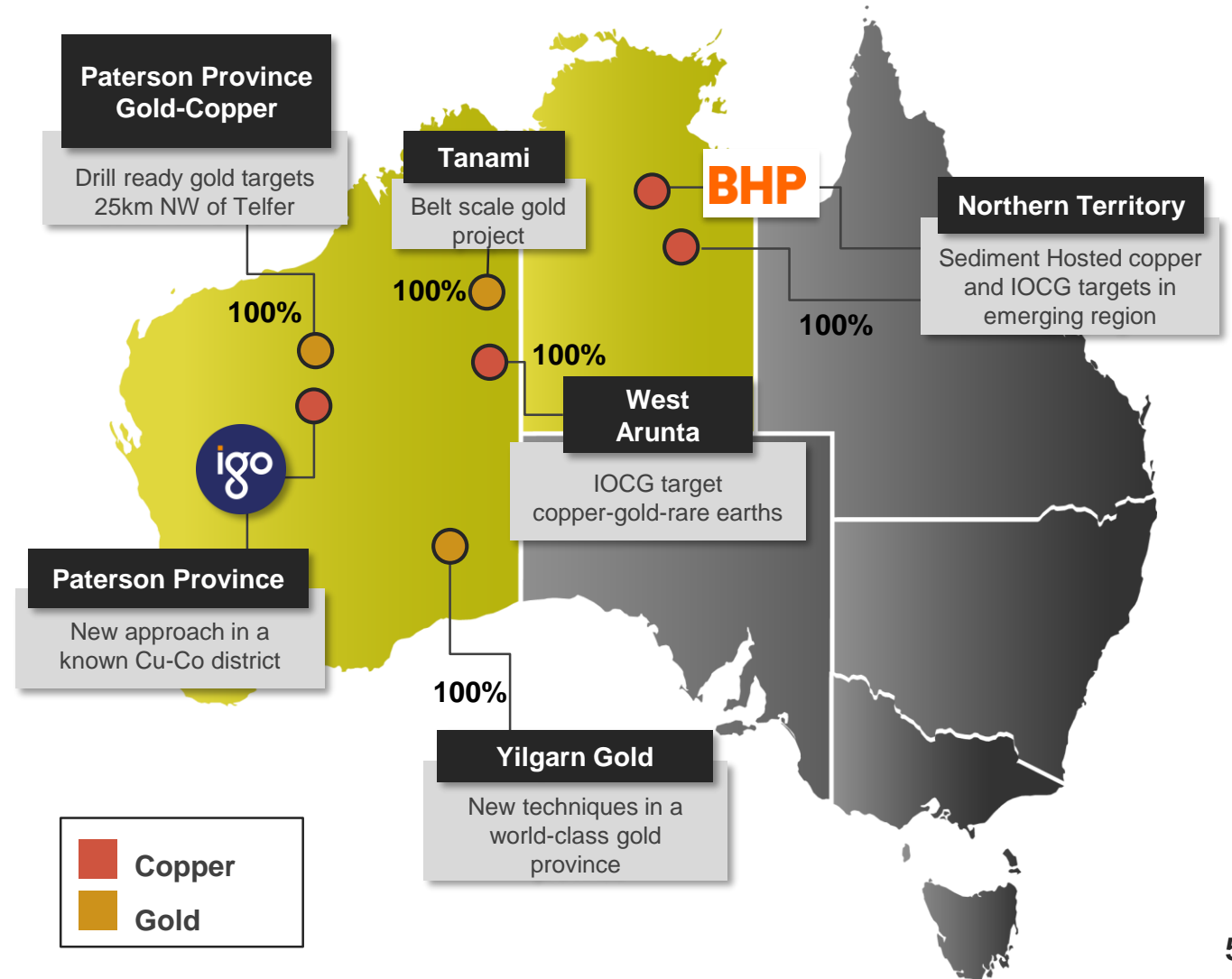
- Lamil Copper-Gold (ENR 100%)
- Yeneena Copper-Cobalt (IGO \$15m earn in)

Northern Territory Copper

- Elliott Copper (BHP \$22m earn in)
- Seven camp scale projects (ENR 100%)

Tanami / West Arunta - WA

- Aileron IOCG Copper-Gold (ENR 100%)
- Tanami Gold (ENR 100%)



Global Copper Demand

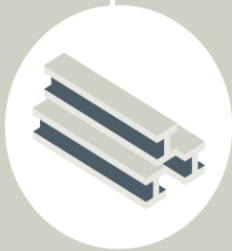
With each energy transition comes a new need for materials.



Wind, solar, and the associated battery technologies are mineral intensive, using many niche and base metals.



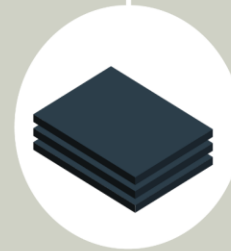
Nickel



Lithium



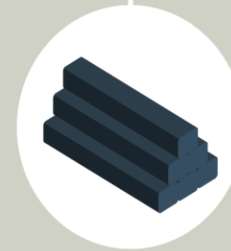
Cobalt



Graphite

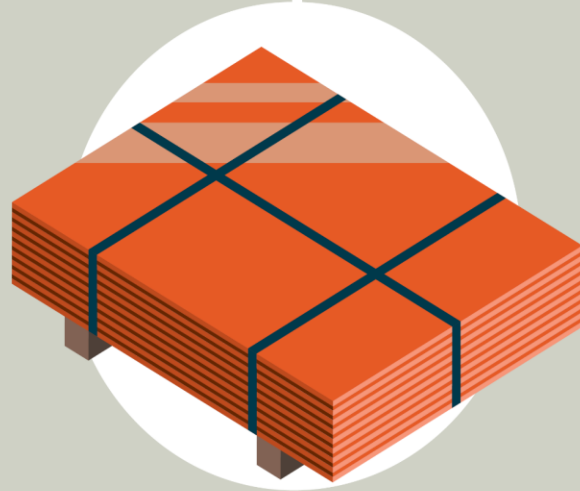


Aluminum



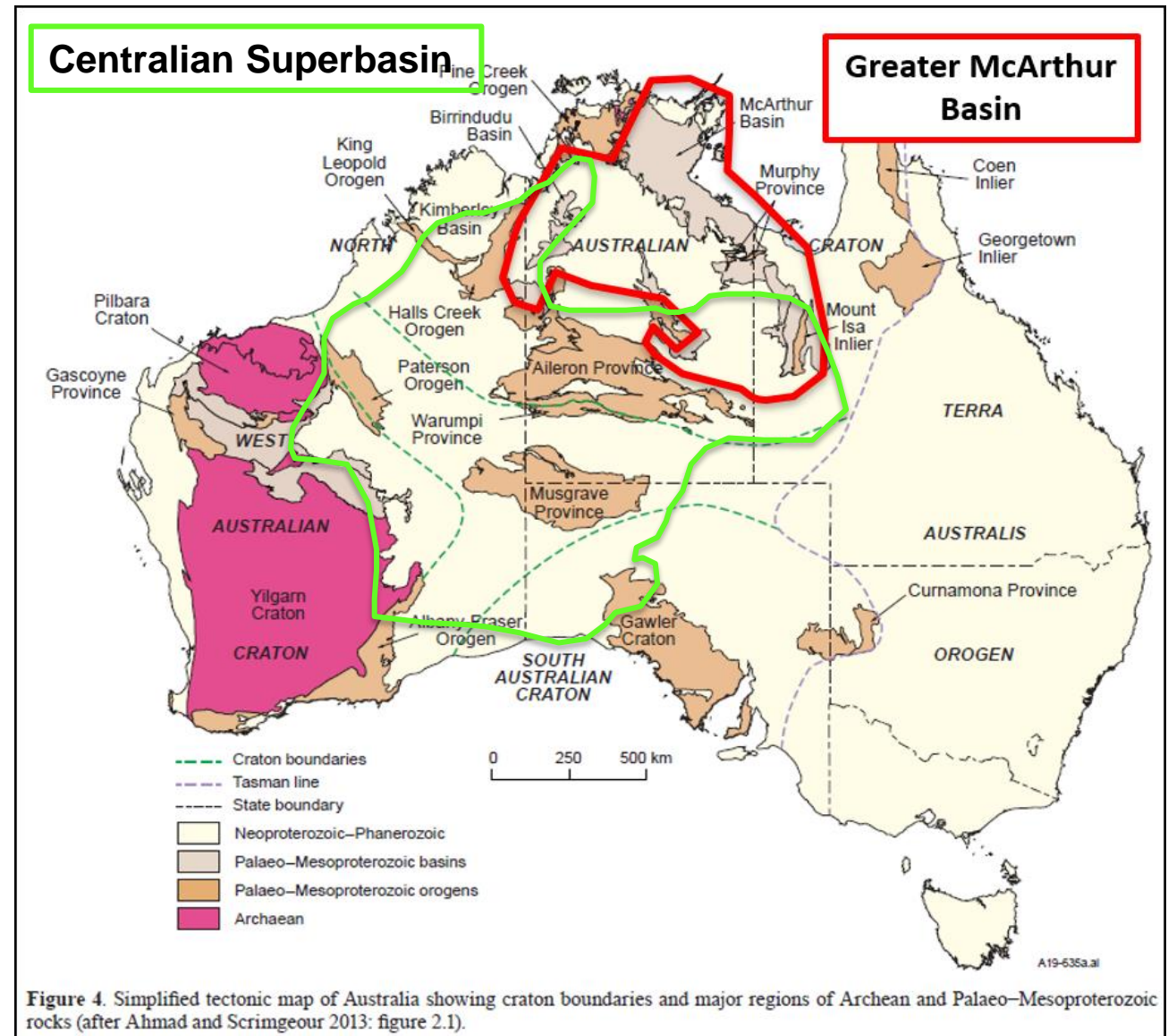
Vanadium

There is one metal that stands out:
Copper



Major Proterozoic basins of Australia

- Central Australia contains two of the largest Proterozoic sedimentary basins in the world
- Known regions for large scale, sediment hosted base metal mineralisation
- Significant deposits including Mt Isa, Century, McArthur in the McArthur Basin and Nifty in the Centralian
- Vastly underexplored areas remain untested undercover in this highly prospective first world jurisdiction
- A significant opportunity exists to discover the world's next great copper belt



Northern Territory

The next hot spot for copper in Australia

Elliott – Standout copper in groundwater anomaly

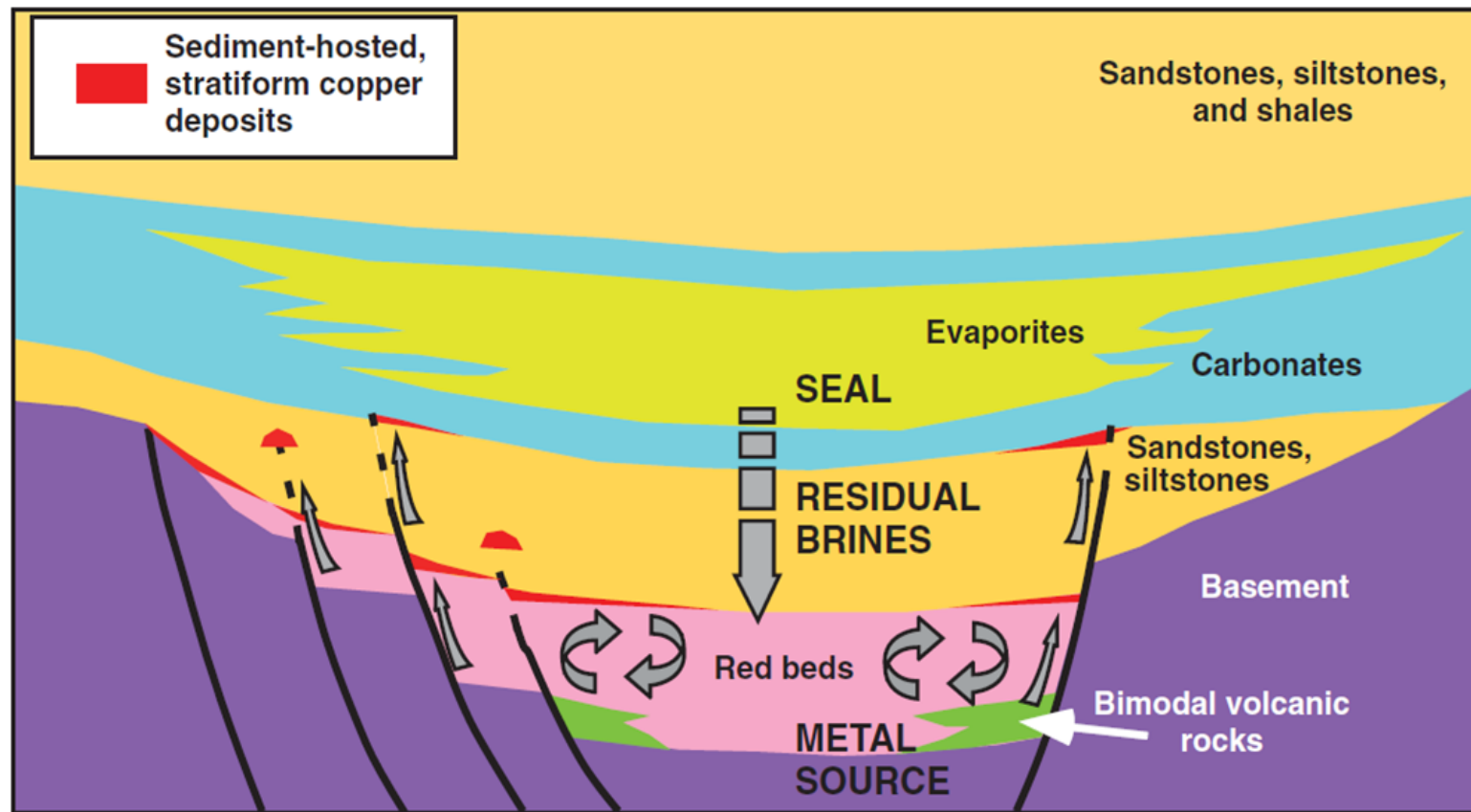
First mover camp scale copper projects

BHP Earn in

ENR 100%

Sedimentary deposits are one of the world's fastest growing sources of high grade copper

Sediment-hosted copper: the mineral system



(Hitzman et al., 2010)

Example of sediment-hosted copper deposit – Ivanhoe Mines Kamoakakula¹

Indicated Mineral Resource (at 1% total copper cut-off grade)

Tonnes (Millions)	Grade % Cu	Contained Cu (kt)
1,387	2.74%	38,000

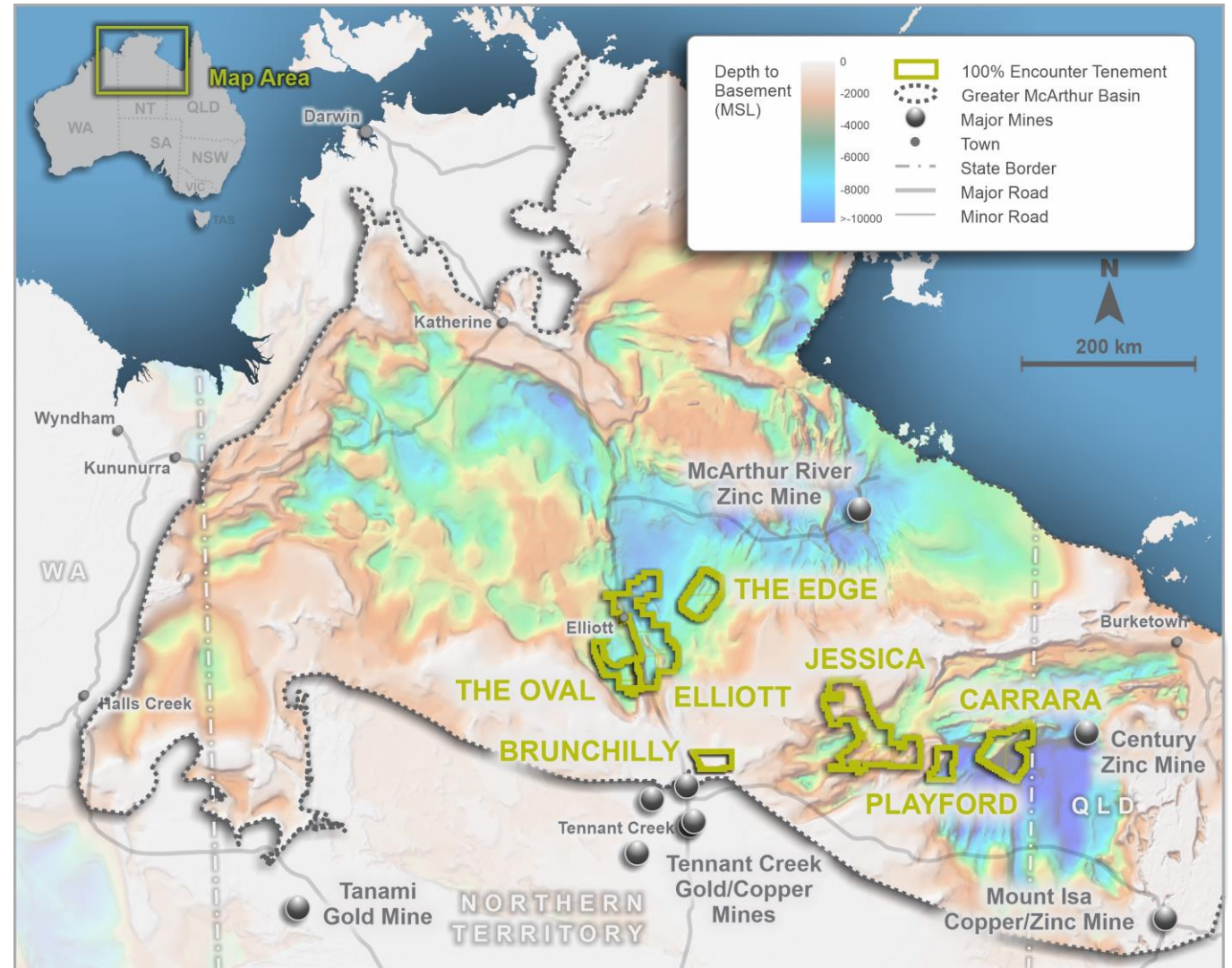
Sediment-hosted copper: key ingredients

EXPLORATION FOCUS

	DISCOVERY ELEMENTS	NT SCORECARD	EXPLORING FOR THE FUTURE DATA
Source rocks	Size of sedimentary basin and sub-basin	✓	
Brines	Bitten brines vs evaporites or both?	✓	
Seals	Grabens form a natural containment for dense fluids	✓	Gravity, magnetics
Inversion	Basin inversion / orogenic event to provide the energy to bring reservoir fluid towards surface	✓	
Fluid pathways	Basin margin faults and major faults	✓	Seismic, MT, AEM
Traps	Reductants or failed hydrocarbon traps provide physical and chemical trap sites	✓	Magnetics, Hydro-geochem

Northern Territory: the next hot spot for copper in Australia

- Highly prospective, vastly underexplored region under shallow cover
- Located between the major copper-gold producing districts of Mt Isa and Tennant Creek
- Transformational investment in pre-competitive data by Geoscience Australia (GA) and the Northern Territory Geological Survey (NTGS)
- These new datasets are providing crucial early insights into areas prospective for sedimentary hosted deposits
- Encounter has used these datasets as a first mover to build a commanding position in this exciting new province



Elliott Copper Project **BHP**

- BHP (ASX:BHP) has exercised an option to enter into an earn-in and joint venture agreement covering the 4,500km² Elliott Copper Project
- BHP may earn up to a 75% interest in Elliott by spending up to \$22 million over 10 years
- Validates Encounter's NT copper exploration strategy
- Compelling exploration opportunity in the vastly underexplored Greater McArthur Superbasin
- Key ingredients for the formation of large sedimentary copper deposits
- An extensive exploration program, including seismic surveys and drilling, to define prospective deposition sites for sedimentary copper mineralisation



NTGS Core Library – Darwin



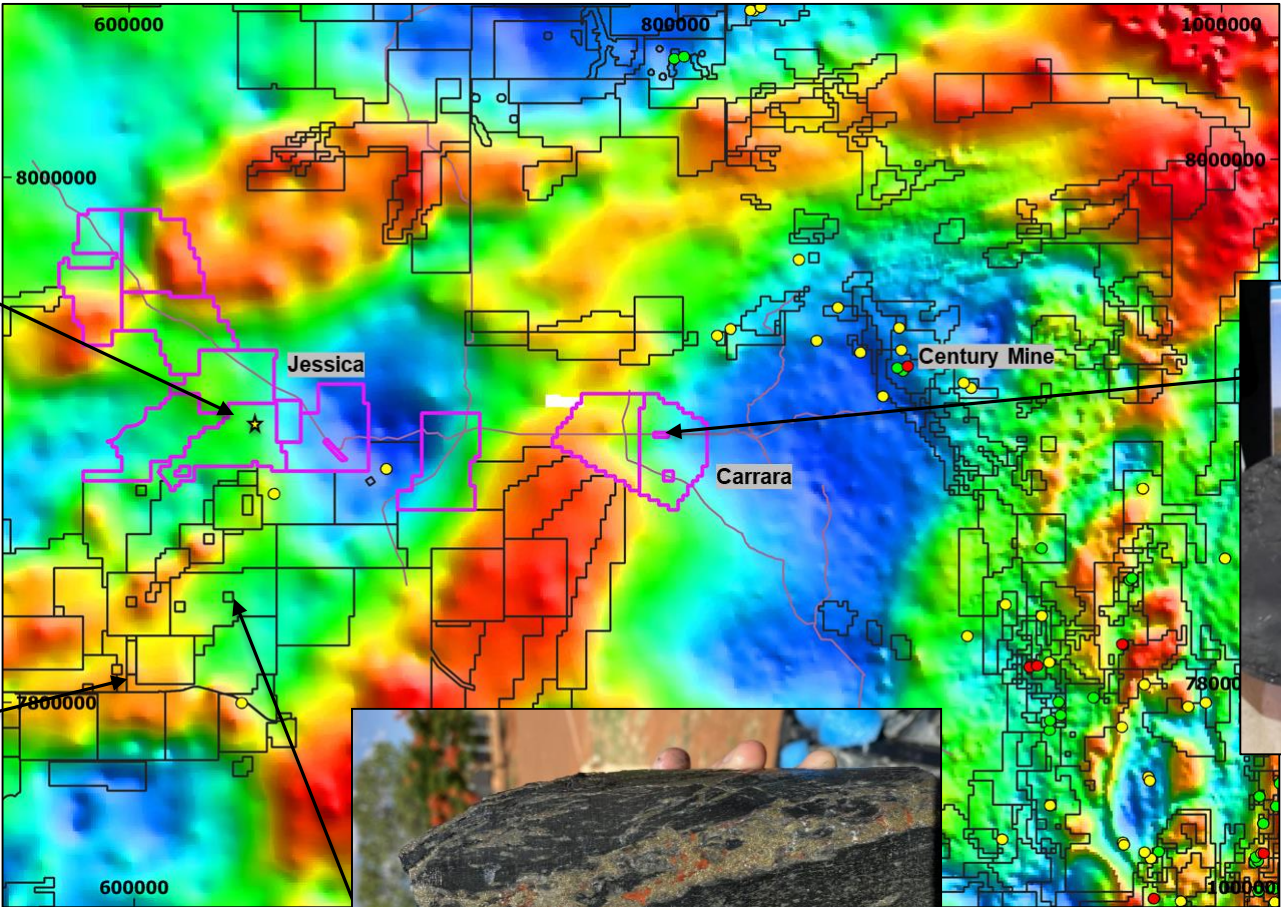
Jessica and Carrara: copper near surface and at depth



Copper Carbonate (Malachite)
0-3m from RN28419 – chemical assay
1.5% Cu ¹



Crosswinds Copper Prospect - Malachite (copper carbonate) mineralisation exposed in table drain ²



Chalcopyrite contained in a calcareous shale unit within NDI Carrara1 ~1,617m ⁴



Drill hole NDIBK04 pyrite-chalcopyrite vein ³

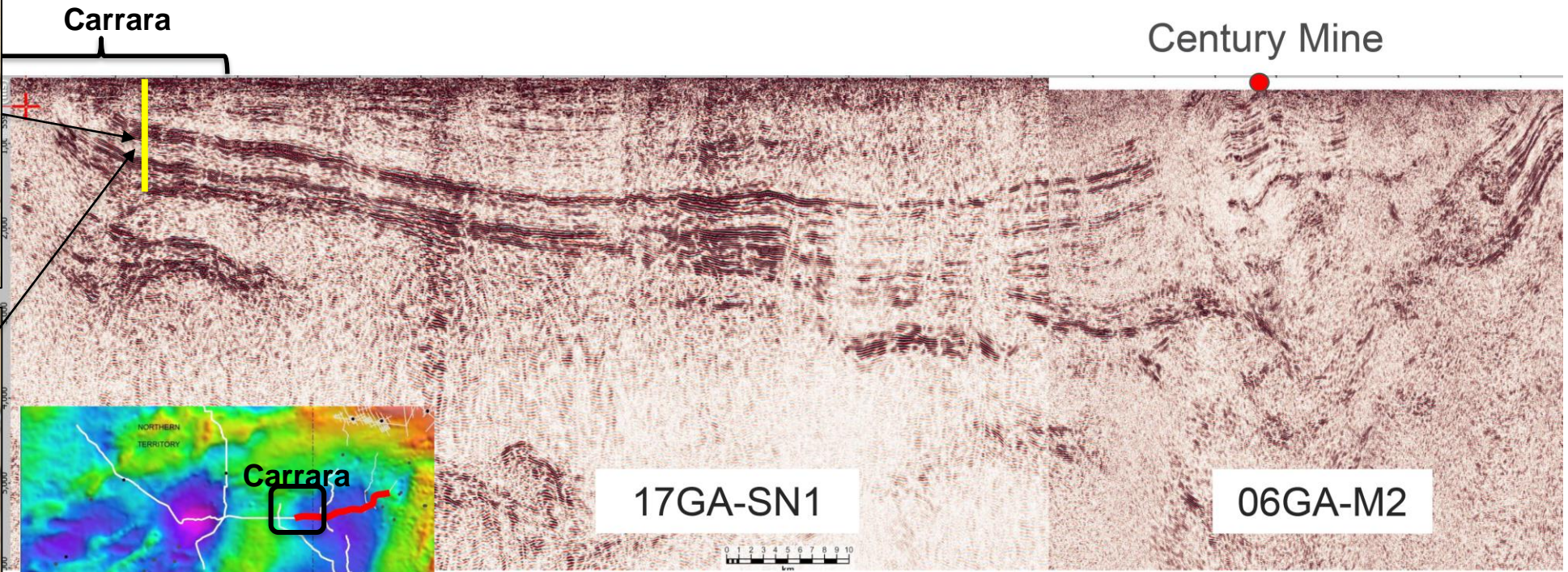


DRILLCORE IS FROM THE NATIONAL DRILLING INITIATIVE.
IT IS NOT THE PROPERTY OF THE COMPANY.

¹ Refer ENR ASX release 19 Aug 2020
² Refer to ASX:MDI release 23 Dec 2020
³ Refer to ASX:ICG release 28 Mar 2021
⁴ Refer to ENR ASX release 28 Apr 2021

Carrara: prospective basin architecture

Correlation of prospective stratigraphic units from the Isa Super Basin into the Carrara Sub-basin indicates the Mount Isa Province extends to the west



South Nicholson Seismic Survey, a foundational dataset acquired as part of the GA Exploring for the Future Program (AGES 2019)

Paterson Province – WA

Australia's hottest copper address

Lamil – 5km long Cu-Au system

ENR 100%

Yeneena – Copper/cobalt targets

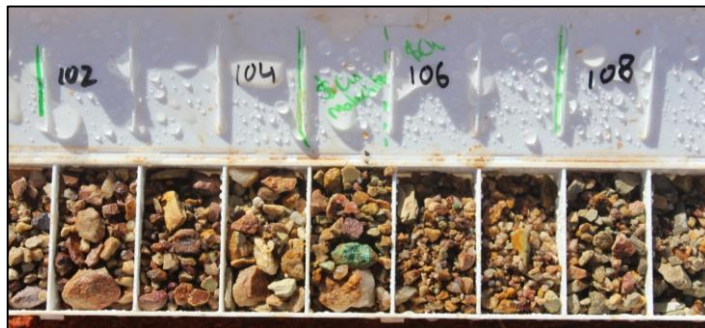


Earn-in

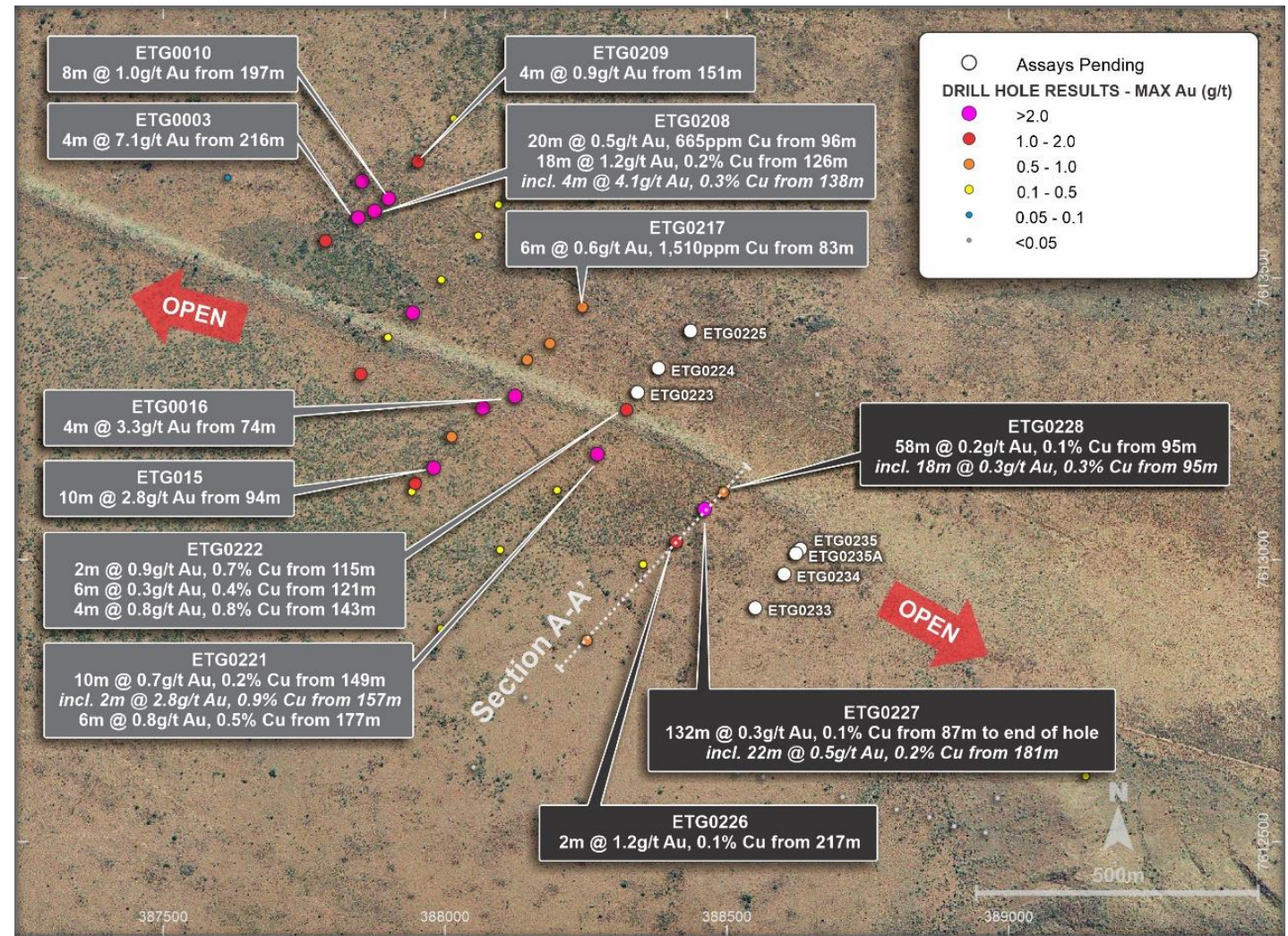


Lamil: copper-gold over 1km long

- 100% ENR – located 25km NW of Telfer
- Ten hole RC drill program (2,077m) completed at the Dune Prospect in February 2021
- Assay results from three of the ten broad-spaced drill holes received and include:
 - 132m @ 0.31g/t Au and 0.11% Cu from 87m to end of hole in ETG227 including:
 - 22m @ 0.51g/t Au and 0.24% Cu from 181m
- EIS co-funded diamond drilling – June 2021



Supergene copper mineralisation noted in EPT228 (104-107m)

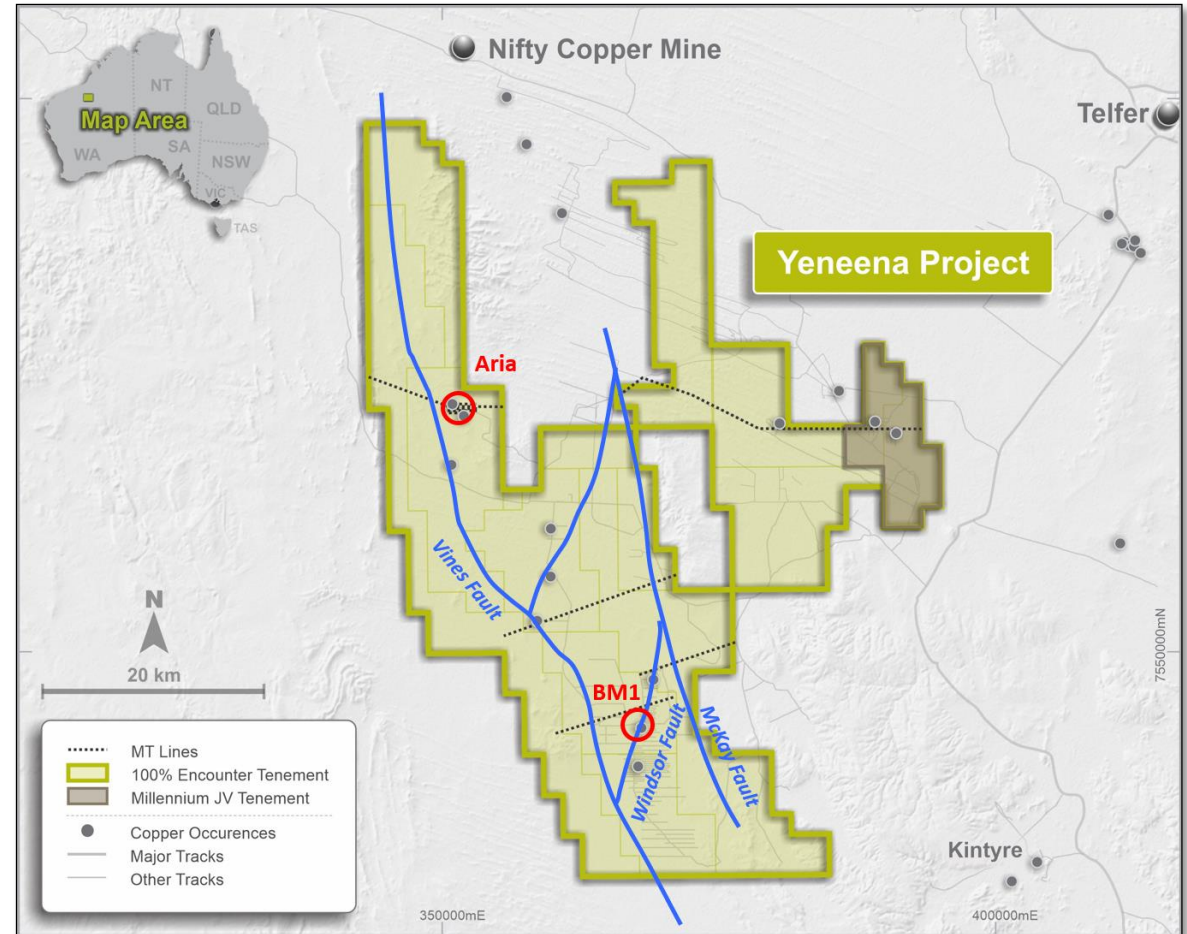


Dune Prospect (Max in hole Au) and recently completed RC holes

Yeneena Copper-Cobalt



- Paterson Province is a proven mineral region with a consistent history of discoveries
- ~1,600km² of the Paterson Province
- IGO can sole fund \$15 million in exploration expenditure over a maximum seven years to earn a 70% interest
- Up to 1,900m of diamond drilling in progress:
 - Windsor EM target: located west of the BM1 Cu oxide zone. Best intersections include:
 - 10m @ 6.8% Cu from 32m*
 - 20m @ 2.0% Cu from 22m*
 - 16m @ 3.2% Cu from 26m¹
 - Aria IOCG target: a conductive feature identified on the margin of the Aria breccia pipe where localised copper mineralisation has been intersected



A large satellite dish antenna is mounted on a mobile platform in a field. The dish is black and has the word "EXPLORER" written on it. The background shows a sunset with orange and red clouds over a field of dry grass.

Tanami/West Arunta – WA

Belt Scale Opportunities

Tanami – Major gold portfolio

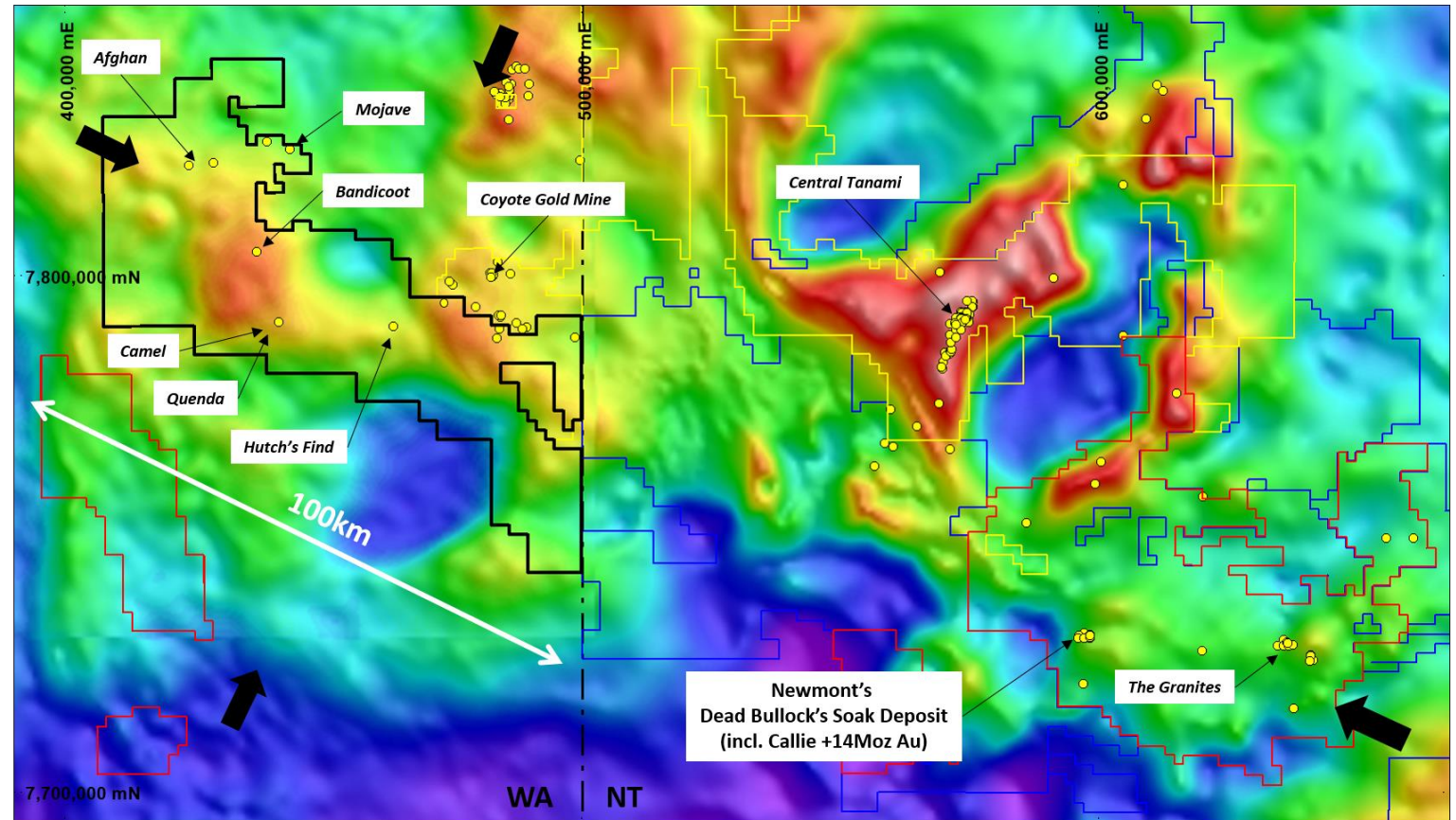
ENR 100%

Aileron – IOCG-style Cu-Au-REE project

ENR 100%

Tanami: a major, drill ready gold exploration portfolio

- Belt scale gold project in WA
- 100km of strike along the major structural corridor interpreted to be the key controlling structure for gold mineralisation in the Tanami
- Material new near mine gold discoveries at Newmont +14Moz Callie mine¹
- Shallow historical exploration has defined multiple Tier 1 deposit footprints
- Foundations for a major exploration drive completed in 2018-2020:
 - 18,400km line airborne magnetic survey
 - Extensive heritage clearances
 - One program (28 holes) of broad spaced RC drilling



Tanami regional leasing summary (Encounter = black, Northern Star = yellow, Newmont = red, Prodigy = blue) with gold occurrences over regional gravity data

Tanami: priority prospects for follow up in 2021

■ Mojave Prospect (EIS Co Funding)

- +7km long gold-arsenic anomaly that includes thick mineralised drill intersections strengthening at bottom of hole
- EIS co-funded drilling (\$150,000)

■ Bandicoot and Quenda Prospects

- Large, untested magnetic anomaly coincident with gold-arsenic geochemical anomaly
- EIS co-funded drilling

■ Camel Prospect

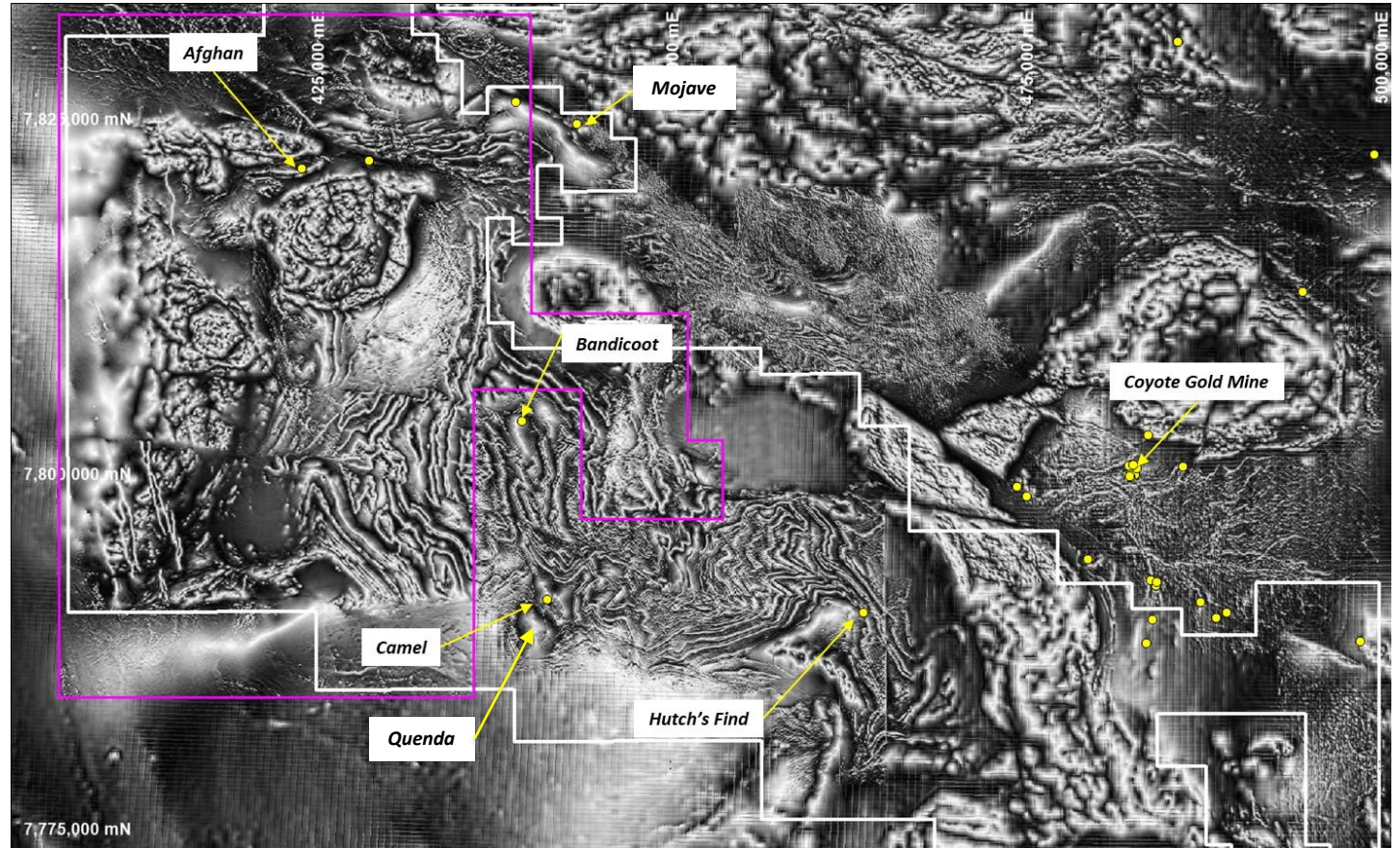
- 7.2m @ 3.1g/t Au from 95m in last drilling completed in 2010 ²

■ Afghan Prospect

- +7.5km long gold anomaly in shallow RAB drilling - 10m @ 1.6g/t Au from 4m ¹

■ Hutch's Find Prospect

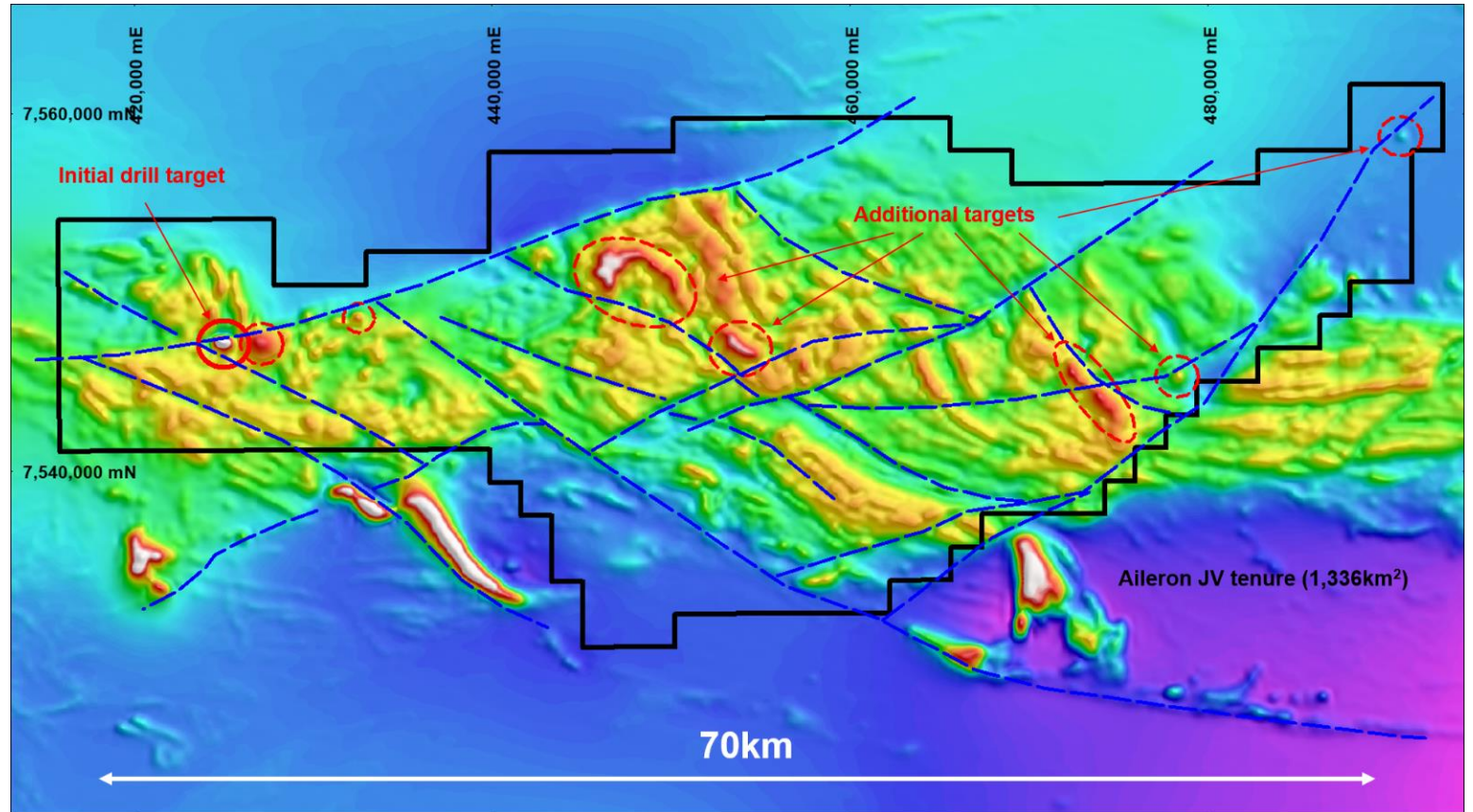
- Limited drilling – 19m @ 2.3g/t Au from 98m and 10m @ 5.4g/t Au from 123m ²



18,400 line km airborne magnetic survey completed

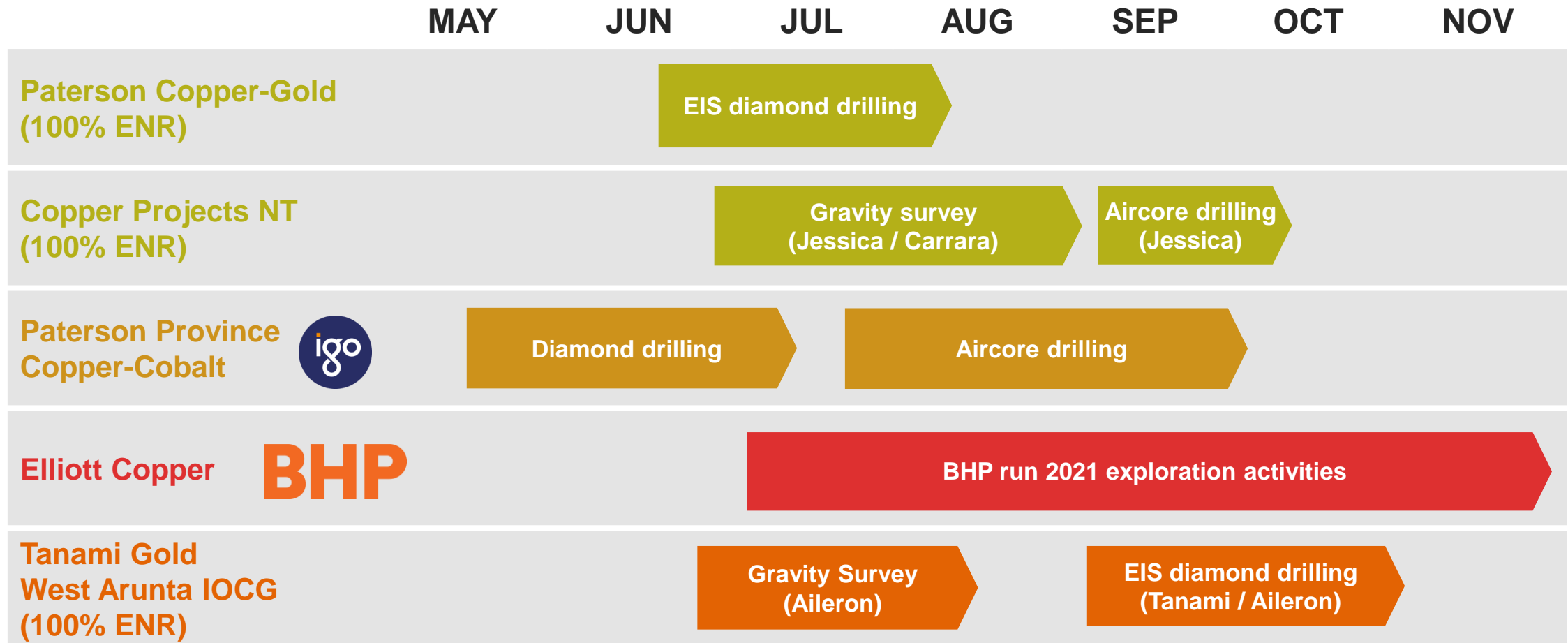
West Arunta: IOCG targets in a new region

- 1,300km² West Arunta province of WA
- First diamond drill hole to a depth of 158m (EAL001) intersected hydrothermal hematite-altered mafic intrusions and granite with a distinctive IOCG geochemical signature
- Metal anomalism is associated with hematite-alteration
- IOCG mineralisation often has a strong density contrast (Olympic Dam, Prominent Hill) meaning gravity surveys could provide drill targets and a clear pathway to discovery
- Gravity survey June 2021
- EIS co-funded drilling to follow (\$150,000)



Aileron Project - Tenement location plan on TMI background

Upcoming exploration activity



Foundations established for major exploration drive

