



Australian Uranium Conference

25th July 2006

Esplanade Hotel, Fremantle, WA

ASX Code : ENR

www.encounterresources.com.au



Agenda

- **Background**
- **Exploration Strategy**
- **Project Portfolio**

Corporate Structure

Company Founded: June 2004

ASX Listing: March 2006

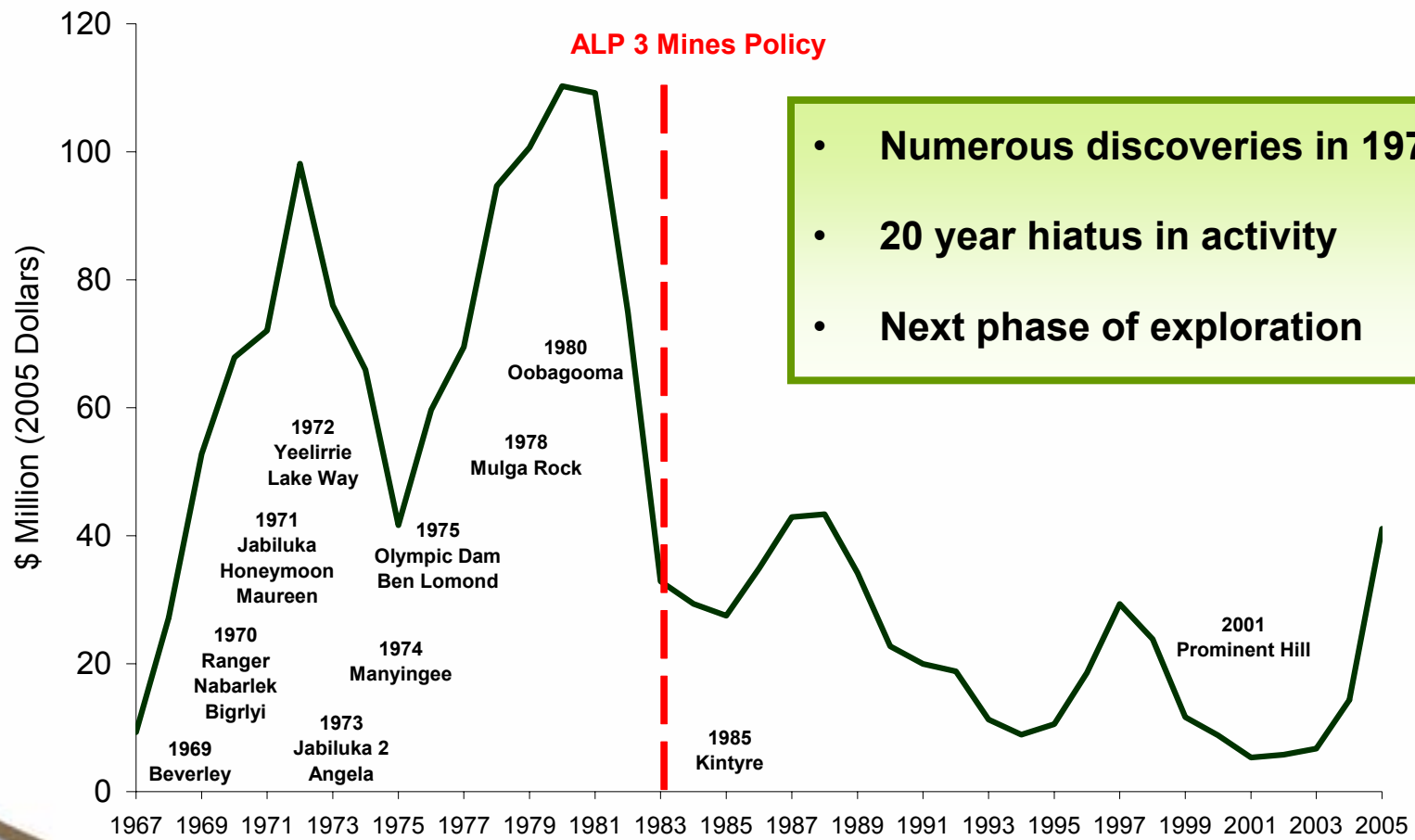
Issued Capital: 60m Ordinary Shares

Market Cap: \$25m

Current Cash: \$4.2m

Top 20 shareholders: 66%

Australian Uranium Exploration Expenditure



Source: A McKay Geoscience Australia

Exploration Strategy

- **Moved early and focused on Western Australia**
- **Assemble an experienced exploration team**
- **Secure the best ground in the Yeelirrie and Lake Way systems**
- **Learn from the 1970's exploration effort**
- **Capture high quality greenfields projects**
- **Build an inventory of uranium resources**

Agenda

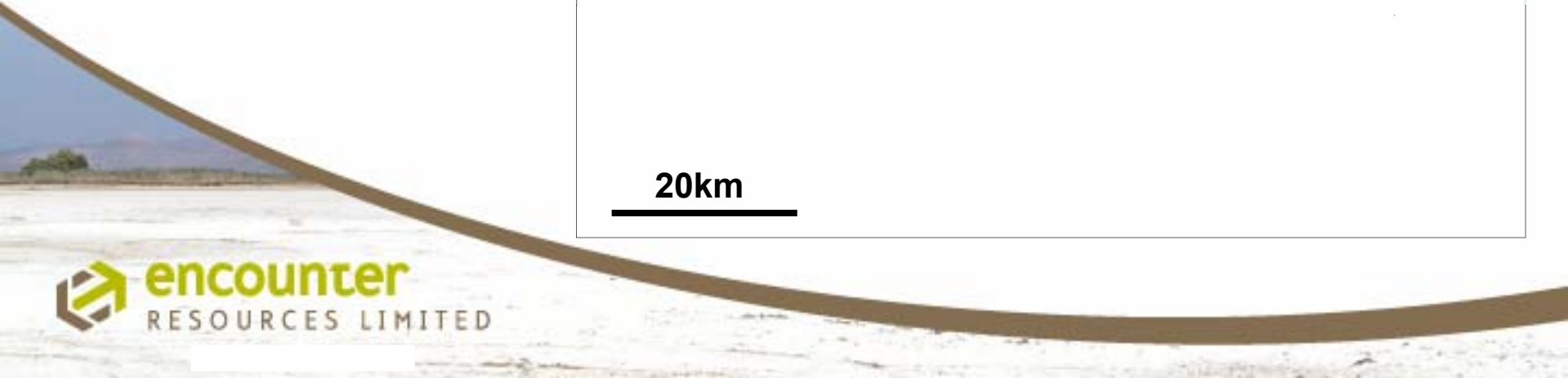
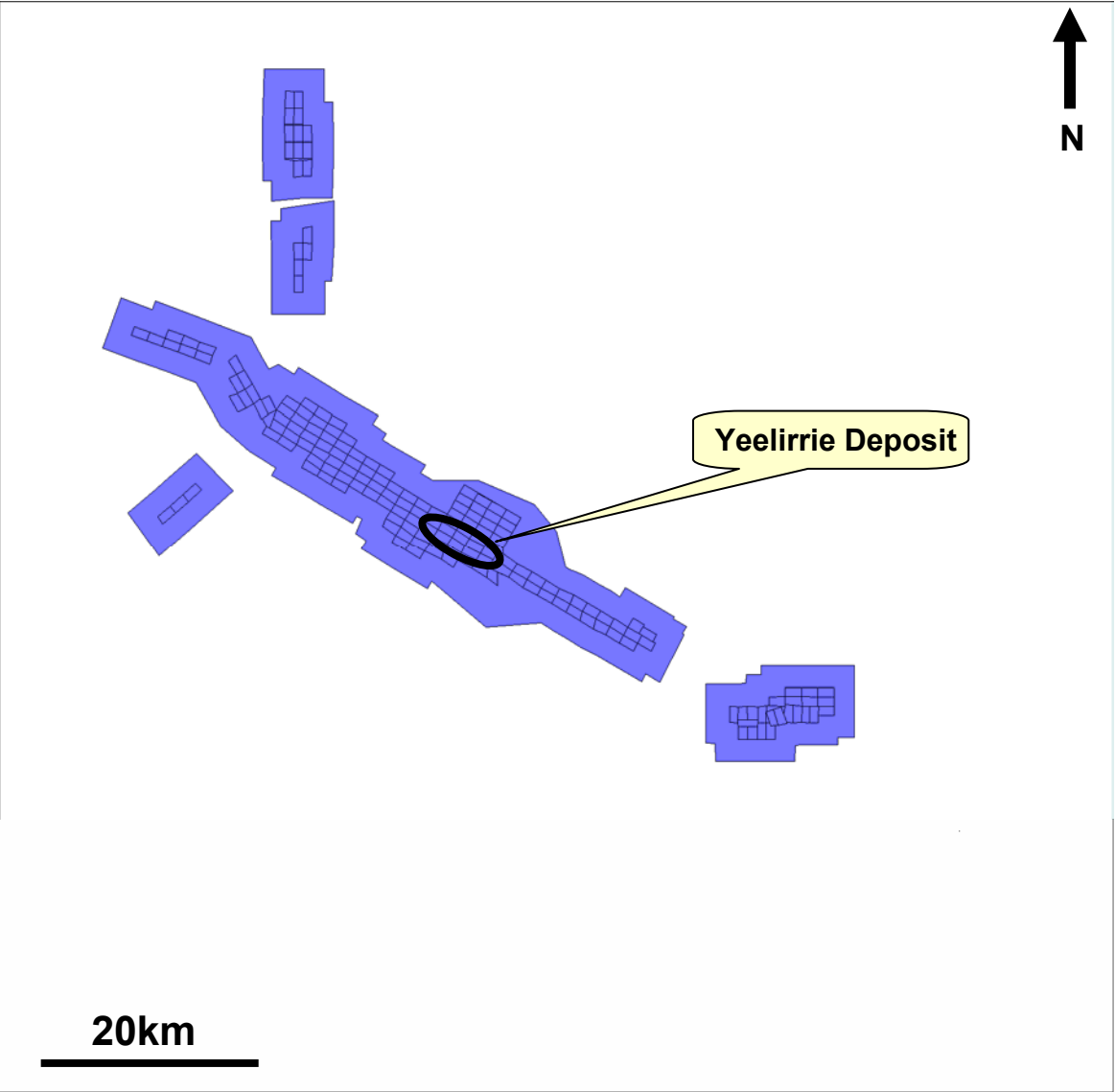
- **Background**
- **Company Strategy**

- **Project Portfolio**

Yeelirrie Project



Pre December 2004



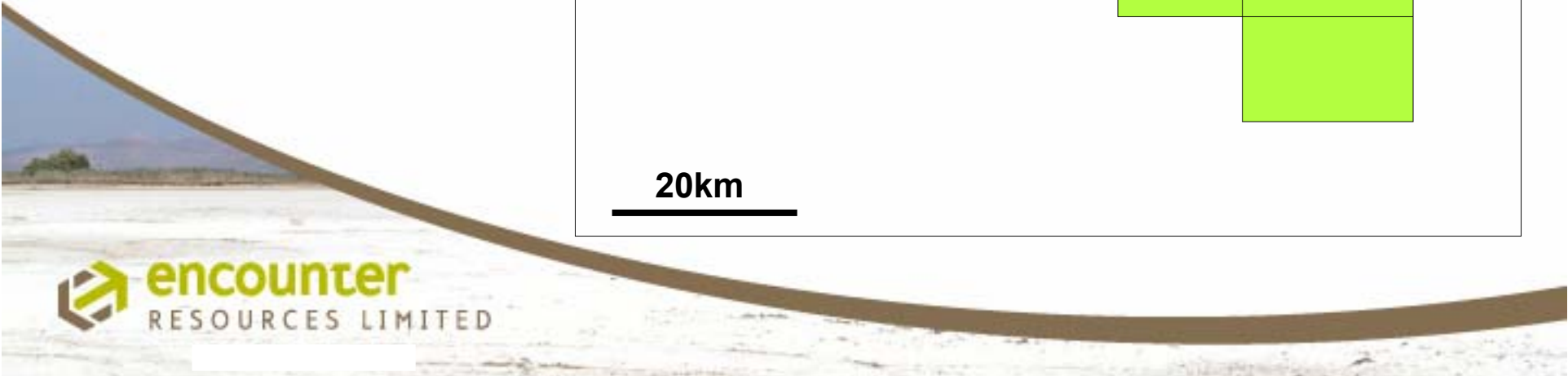
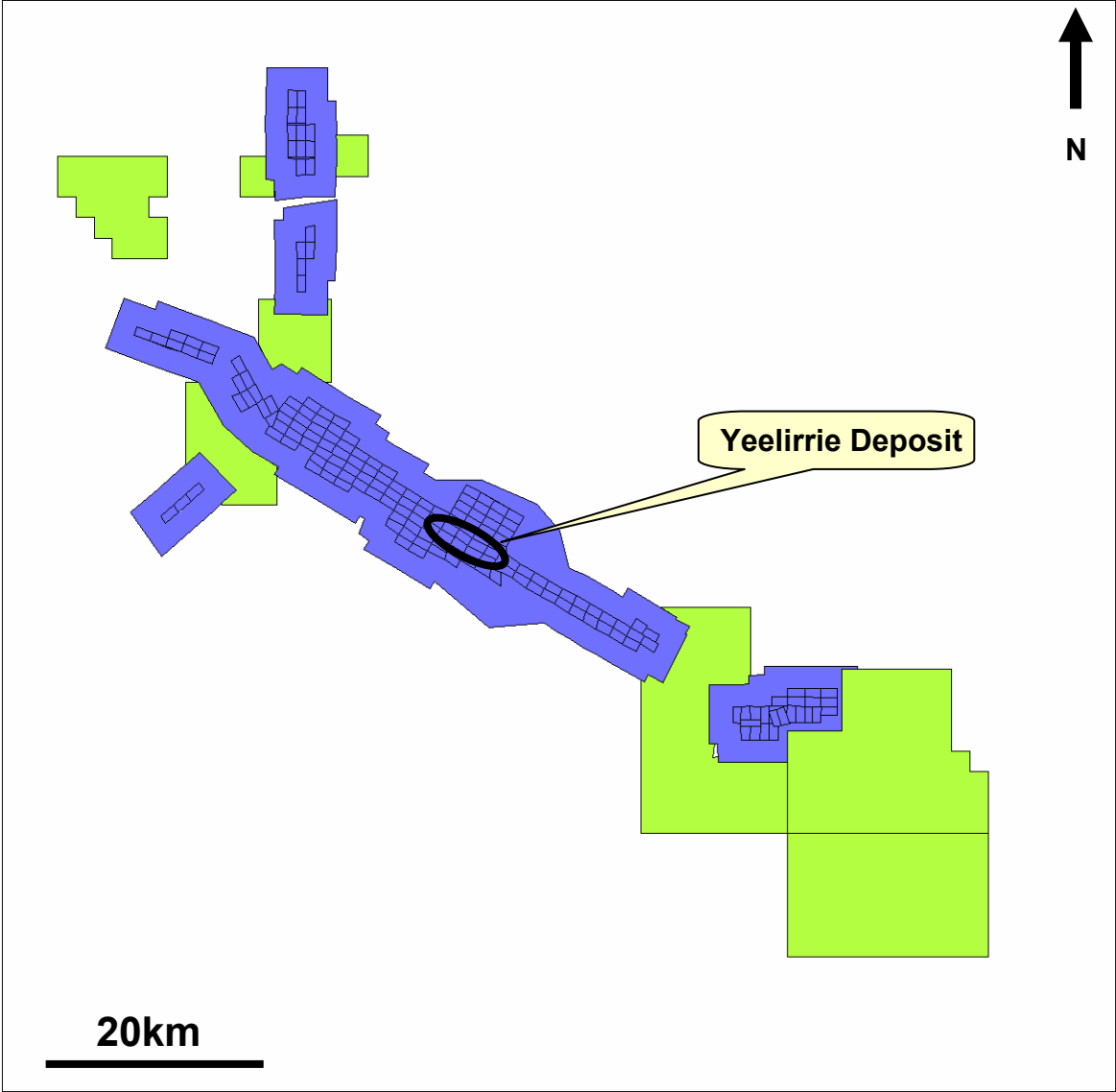
Yeelirrie Project







Pre December 2004

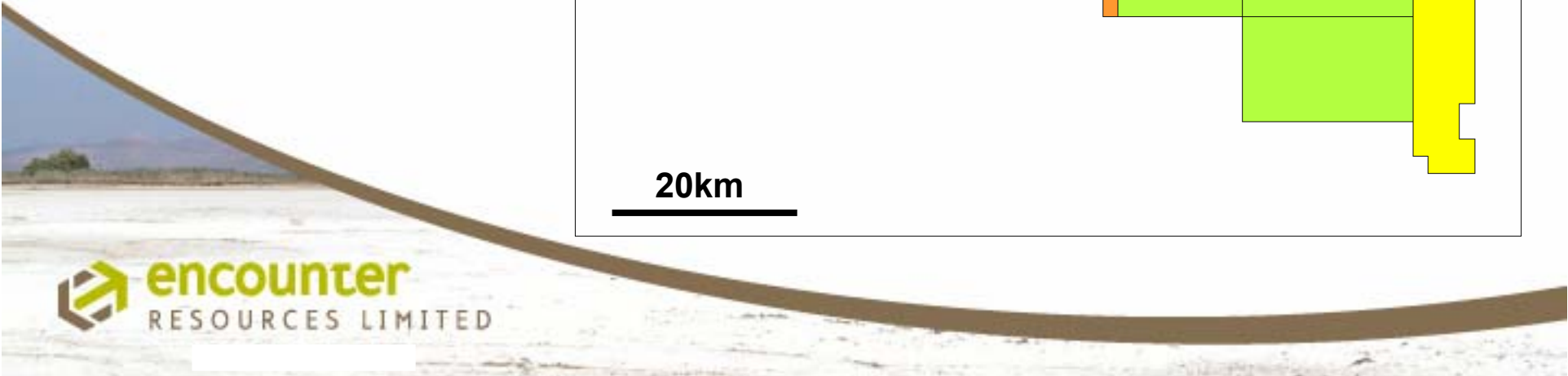
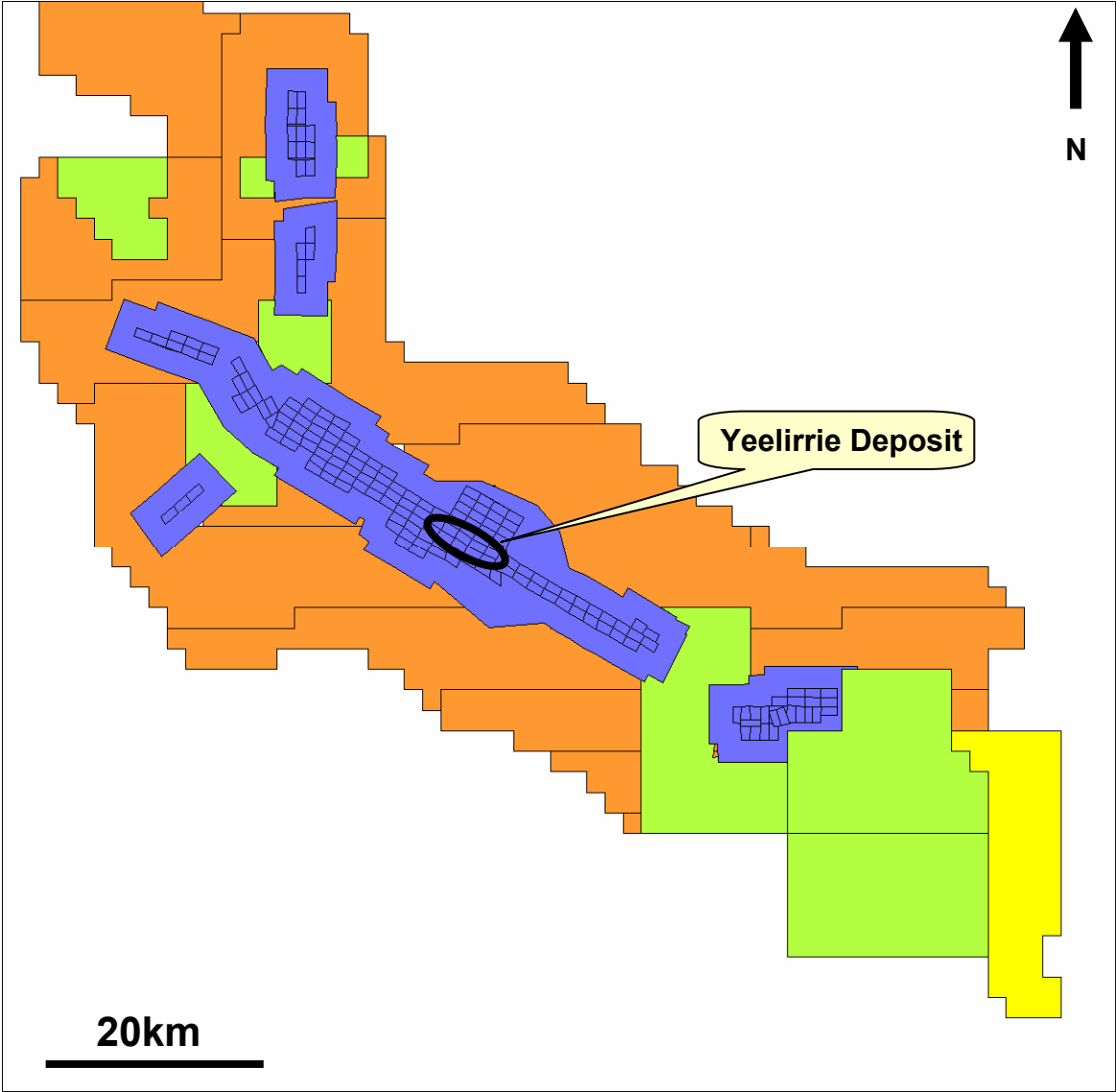


December 2004










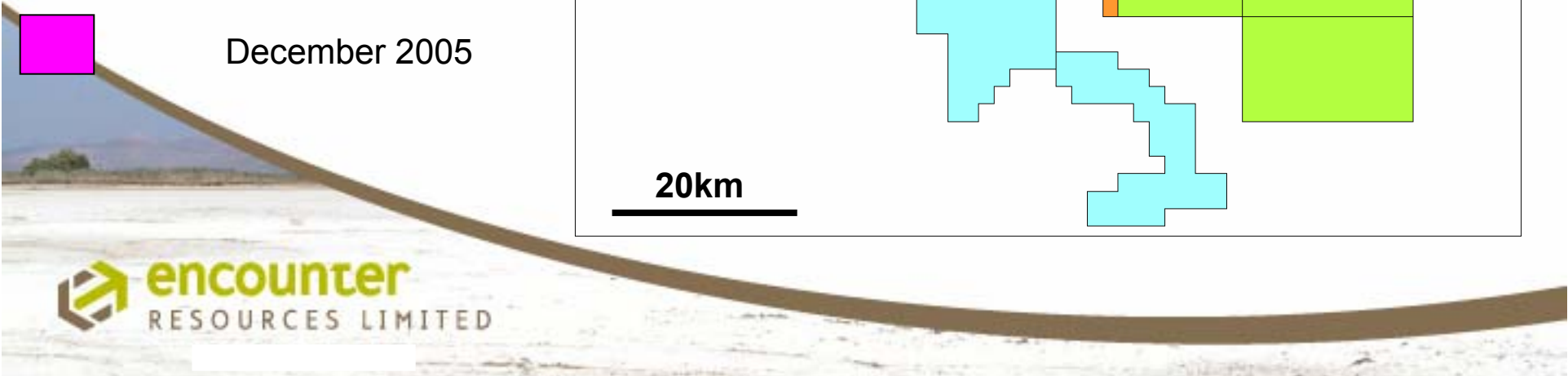
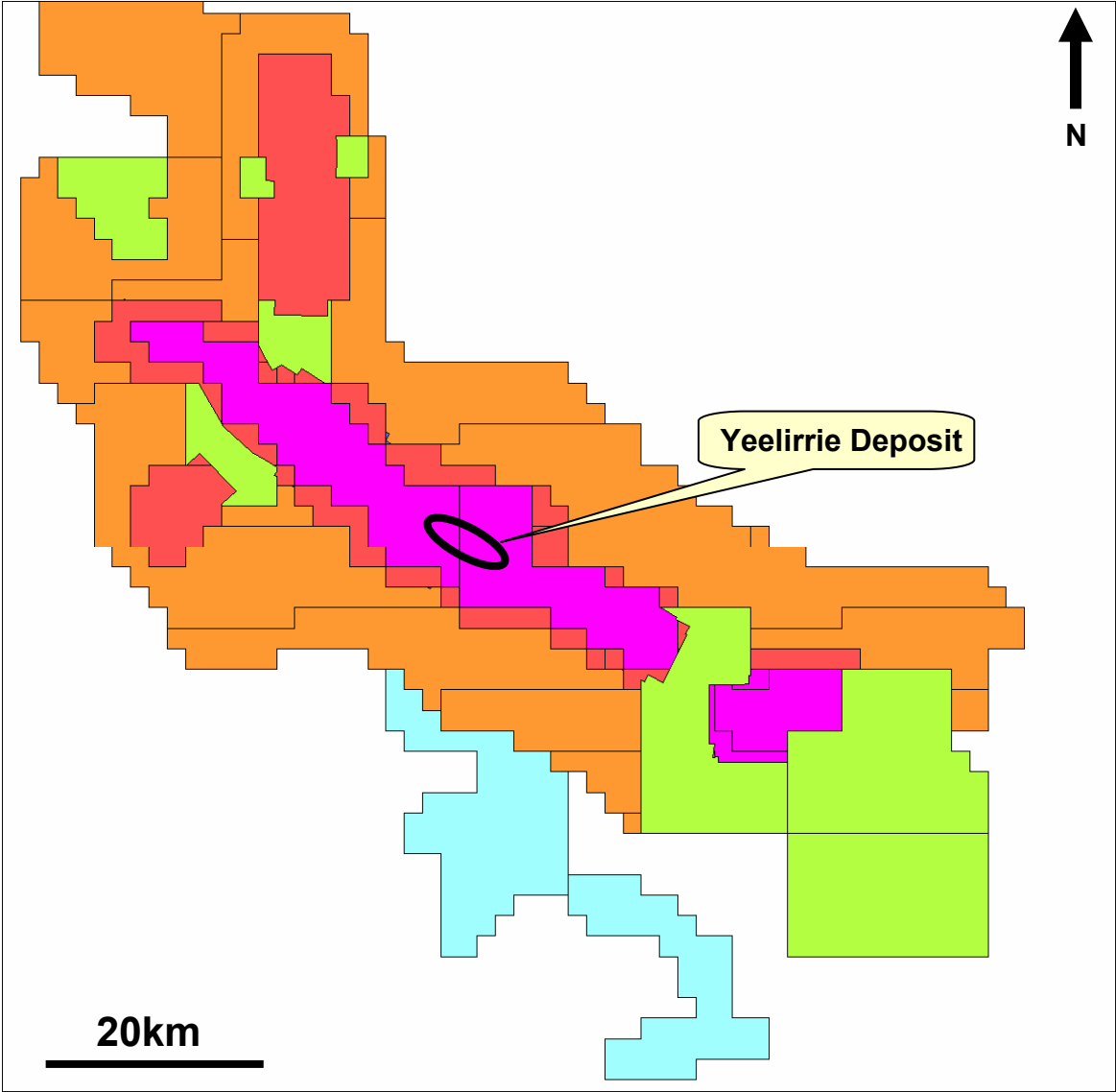
Yeelirrie Project

-  Pre December 2004
-  December 2004
-  February 2005
-  August 2005



Yeelirrie Project

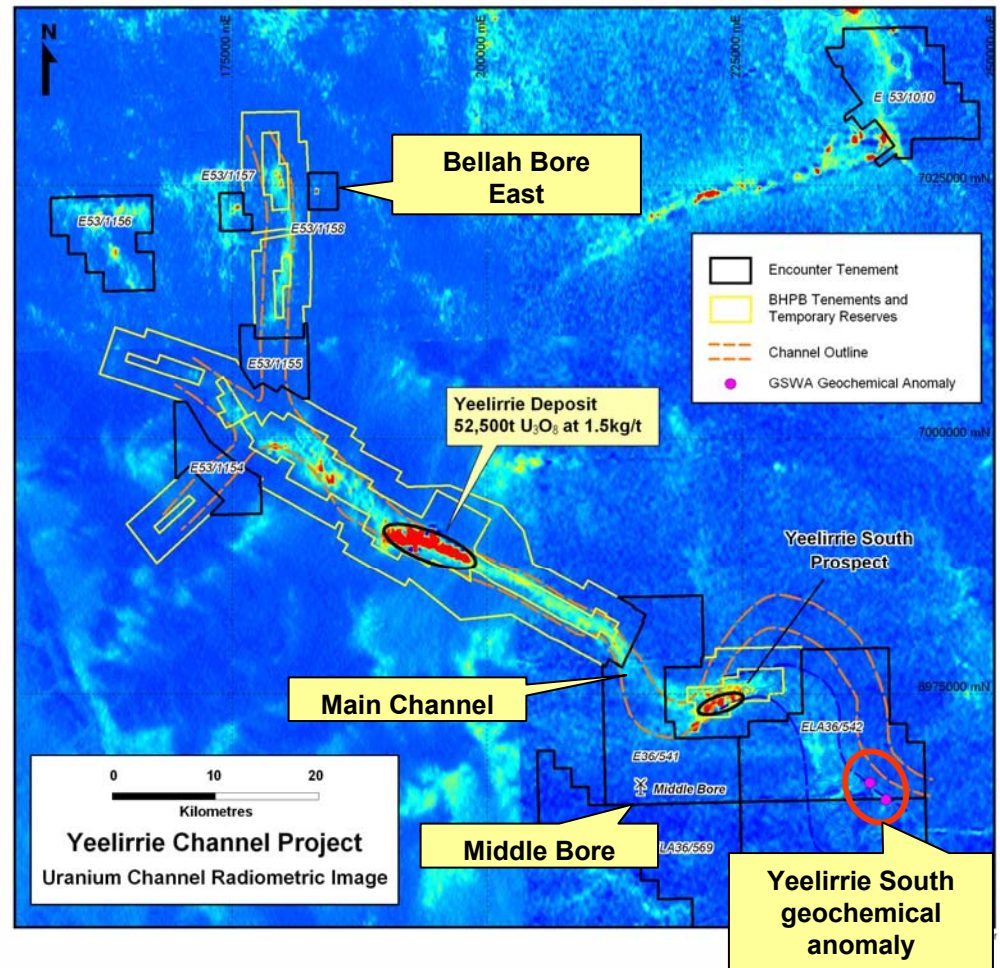
-  Pre December 2004
-  December 2004
-  February 2005
-  August 2005
-  October 2005
-  November 2005
-  December 2005



Yeelirrie Channel

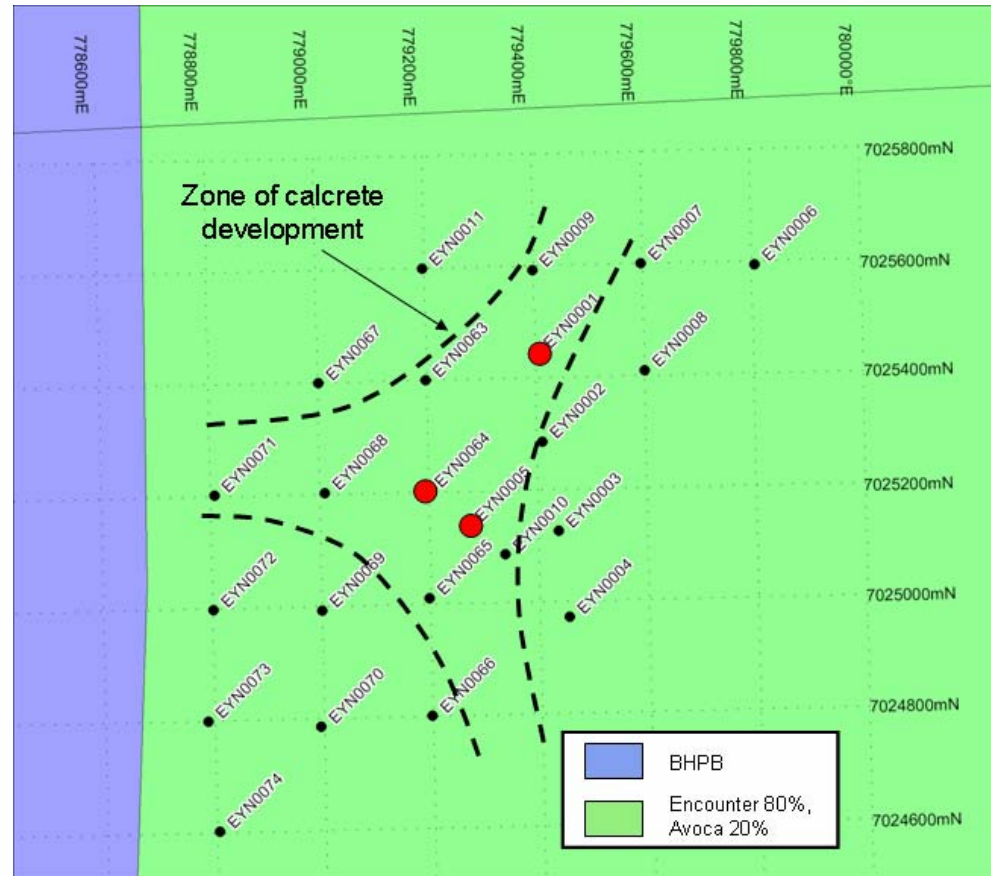
40 strike kms of the mineralised palaeochannel

- Numerous areas of interest in 1,000 km²
- Reviewing historical data within Main Channel
- Strong, unexplained geochemical anomaly defined at Yeelirrie South
- Successful maiden drill program



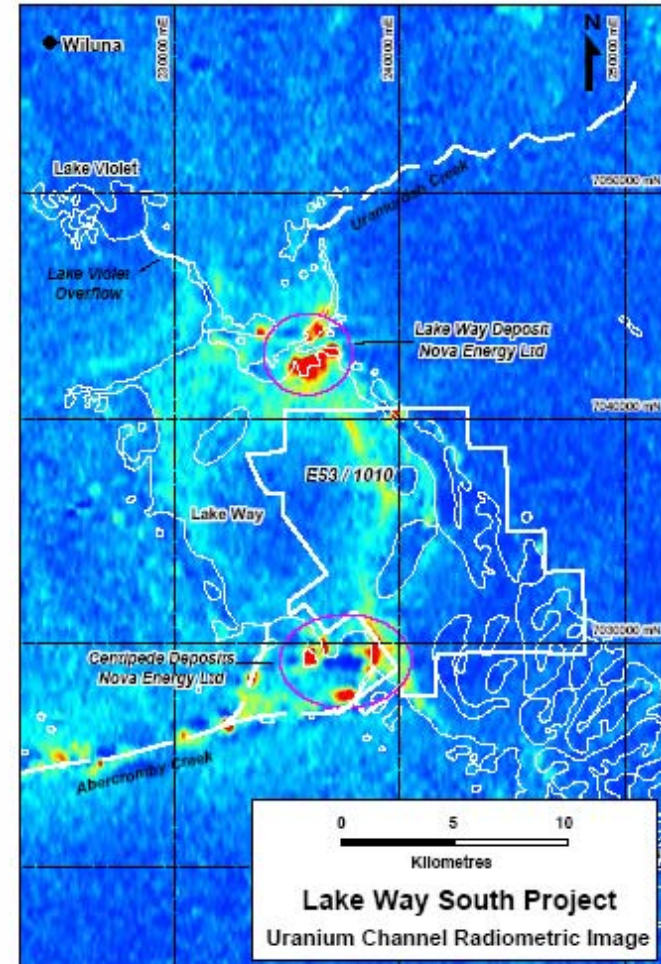
Bellah Bore East

- Small intense surface radiometric anomaly
- Near surface silicified calcrete
- Identified high grade uranium mineralisation
- EYN064 intersected 3m @ 781ppm U_3O_8 from 4m including 1m @ 2,111ppm U_3O_8



Lake Way South

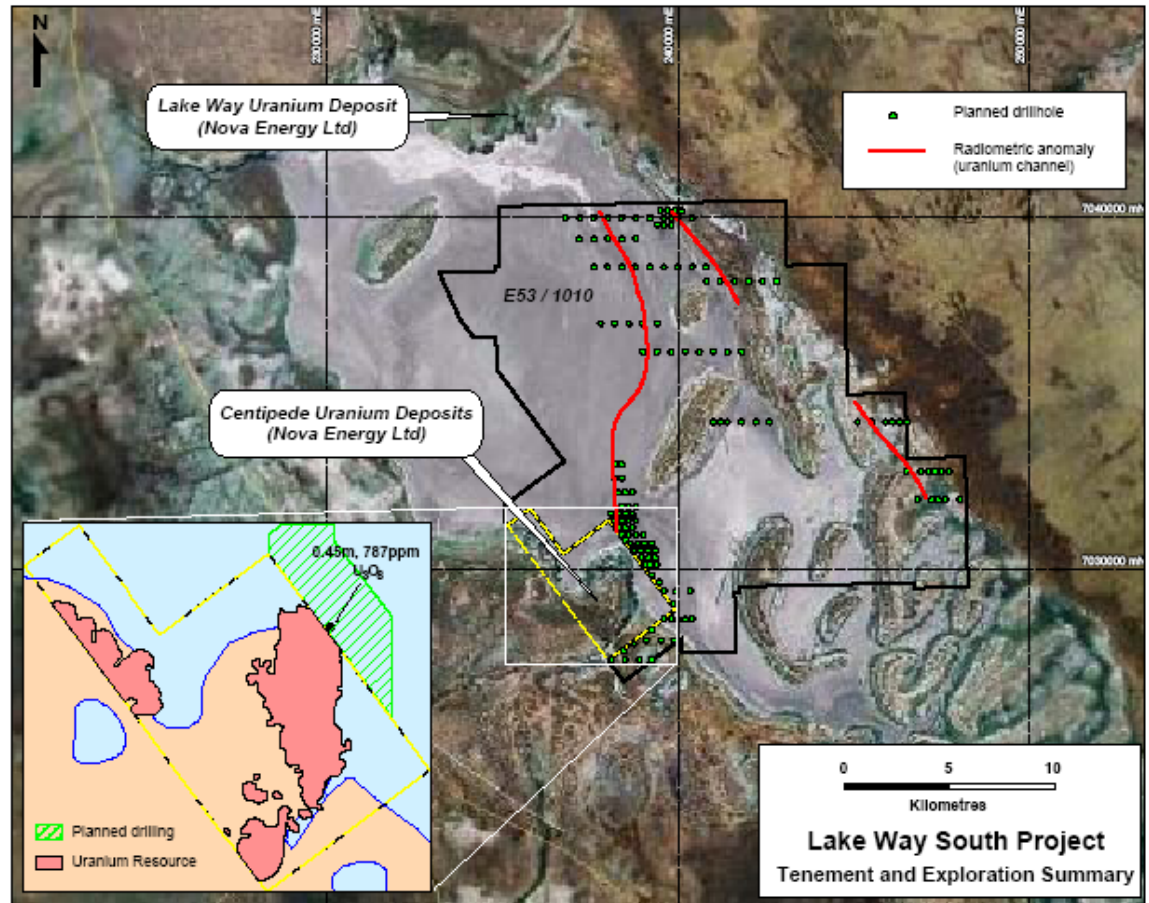
- Lake region between Nova Energy's Lake Way and Centipede deposits
- 12km of prospective drainage system
- Field validation of eastern radiometric anomaly
- Drilling to extend known mineralisation



Encounter earning 60% of the Uranium Rights from Avoca

Lake Way South

- Centipede mineralised trend remains open
- 120 hole program testing for resource extensions
- Historical intersection of 0.45m @ 787ppm U_3O_8



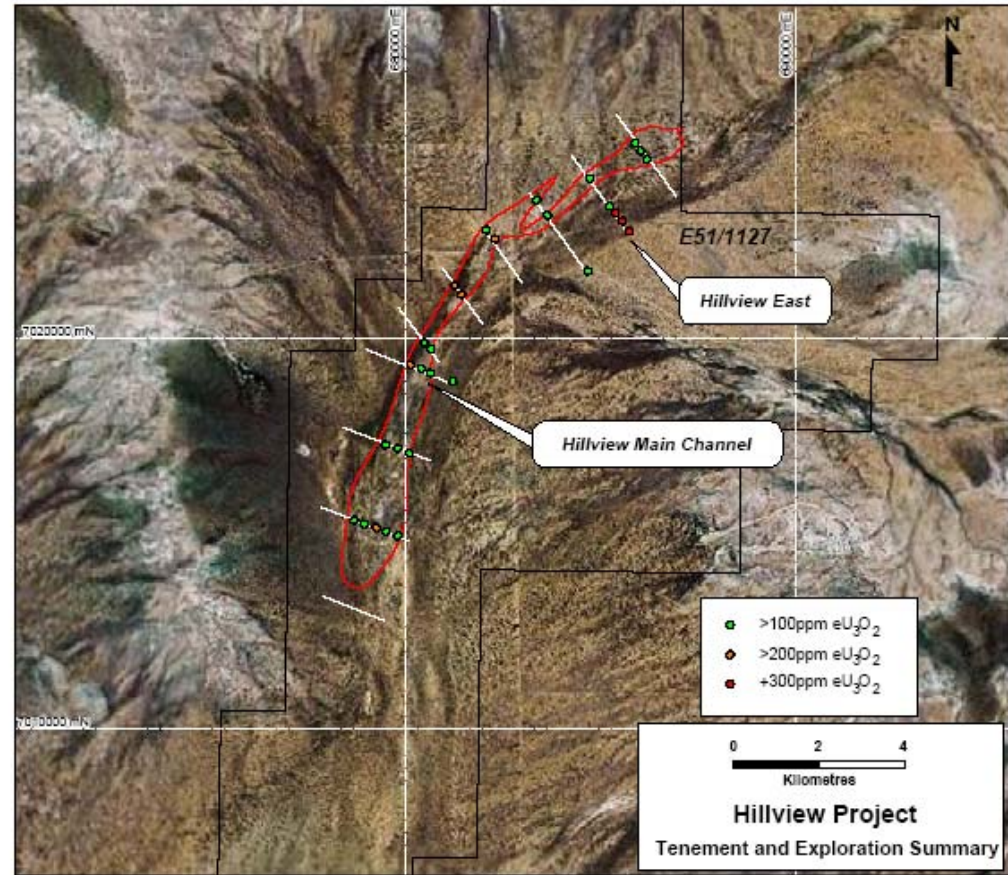
Enc_015a.wor

Hillview

Historic uranium mineralisation with higher grade potential

- 15km long lower grade (100-200ppm U) mineralised channel
- Opportunity to identify higher grade pods (eg Hillview East)

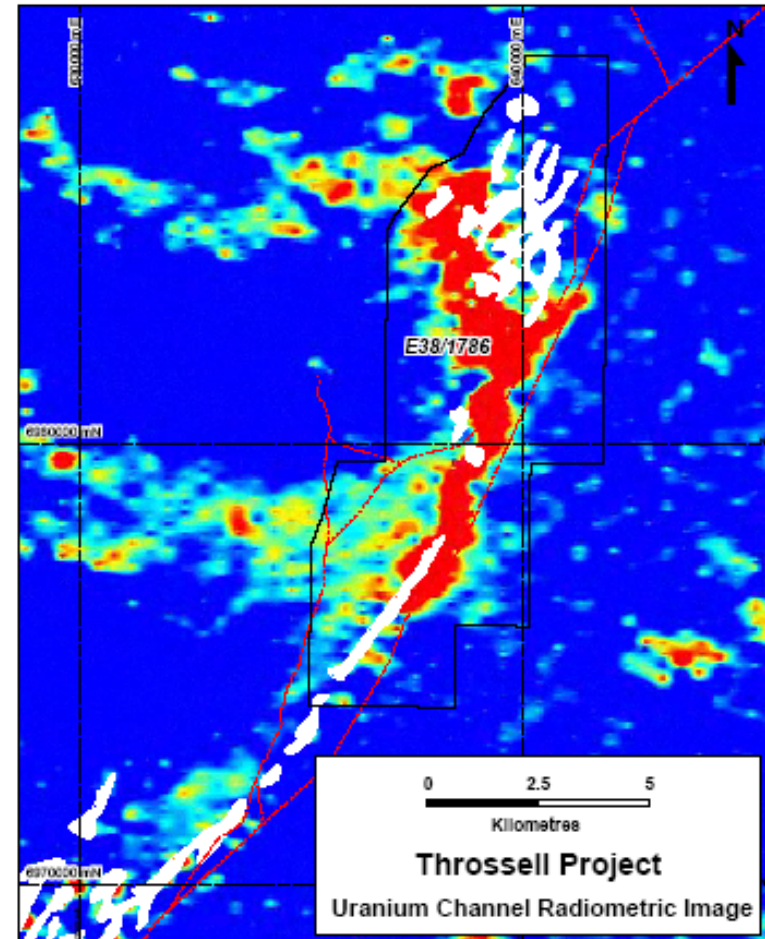
...drilling late 2006



Throssell

Large untested radiometric anomaly with mapped calcrete

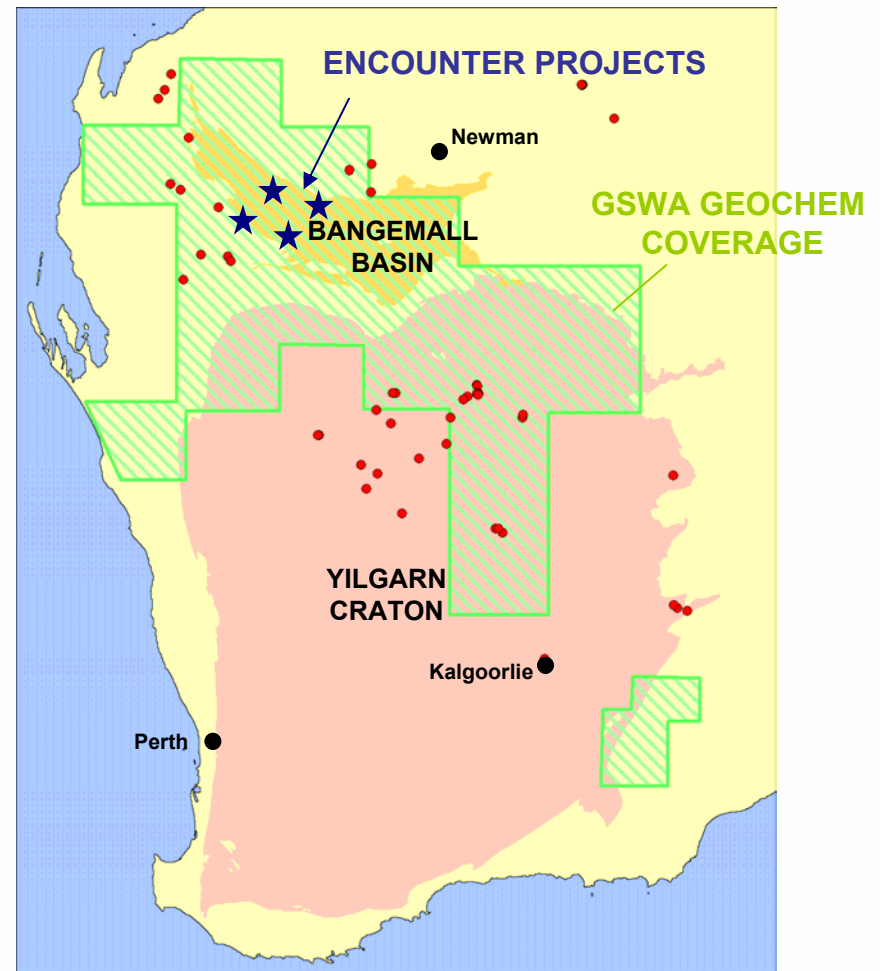
- 10km long uranium series radiometric anomaly
- Interpreted channel environment covered by Recent sediments
- Outcropping calcrete zones within major drainage system



...drilling proposed for H2 2006

Bangemall Basin Projects

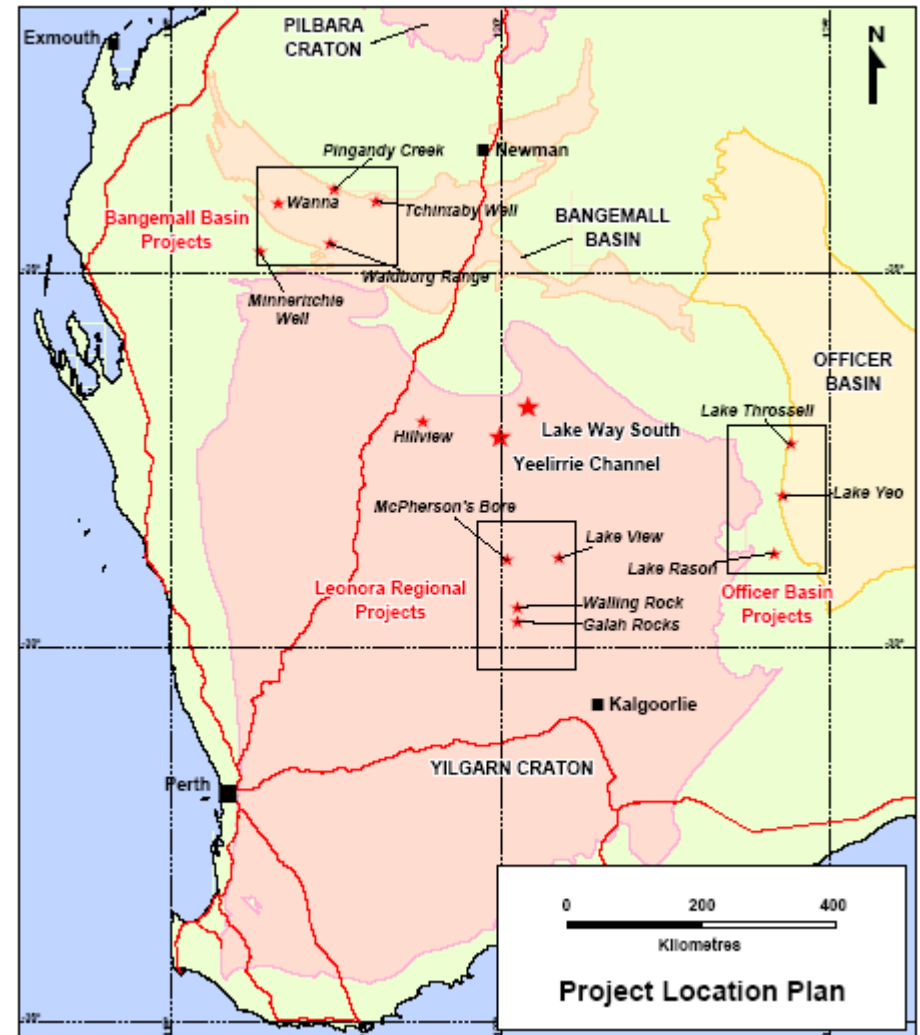
- Geological Survey of WA completed the regional geochemical initiative 1995-2001
- Multi-element dataset was used for uranium targeting
- Geological setting for unconformity style uranium mineralisation
- Secured discrete geochemical anomalies



...strong geochemical anomalies on major unconformity

Extensive Project Portfolio

- Drilling at four projects planned in 2006:
 - Yeelirrie Channel
 - Lake Way South
 - Hillview
 - Throssel
- Progressively test targets
- \$1 to \$1.5 million per annum



All projects Encounter 80% & Avoca 20%, except Lake Way earning 60%

Encounter Resources Ltd

- **Western Australian uranium**
- **Extensive project pipeline - 25 quality projects**
- **Experienced exploration and technical team**
- **Modern exploration methods to define new resources**
- **Positioned to capitalise on regulatory change**

**Exciting opportunity for brownfields
and greenfields discoveries**



Australian Uranium Conference

25th July 2006

Esplanade Hotel, Fremantle, WA

ASX Code : ENR

www.encounterresources.com.au

