



Active Uranium Exploration

Mining 2006 Conference
Brisbane, Australia
1 November 2006

Will Robinson
Managing Director

ASX Code : ENR

www.enrl.com.au

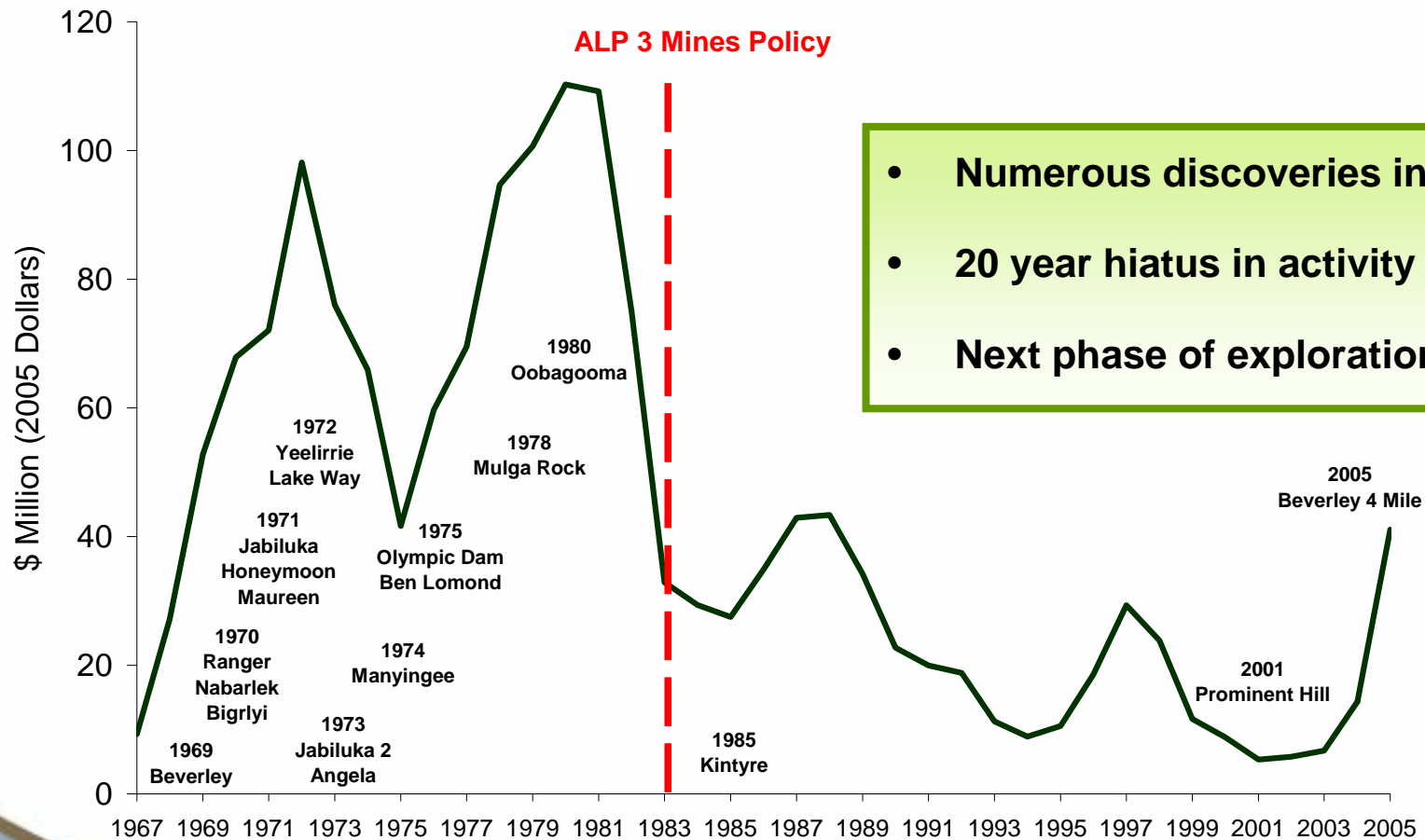
Encounter Resources – WA Uranium

- Extending known resources at Lake Way South
- Premier ground position around BHP's Yeelirrie deposit, the world's largest calcrete U deposit
- Experienced exploration team
- Successful IPO - March 2006
- Active explorer

Corporate Structure

Issued Capital:	60m Ordinary Shares 0.2m Employee Options
Market Cap:	~\$25m
Cash:	\$3.9m
Top 20 shareholders:	66%

Australian Uranium Exploration Expenditure



Source: A McKay Geoscience Australia

Agenda

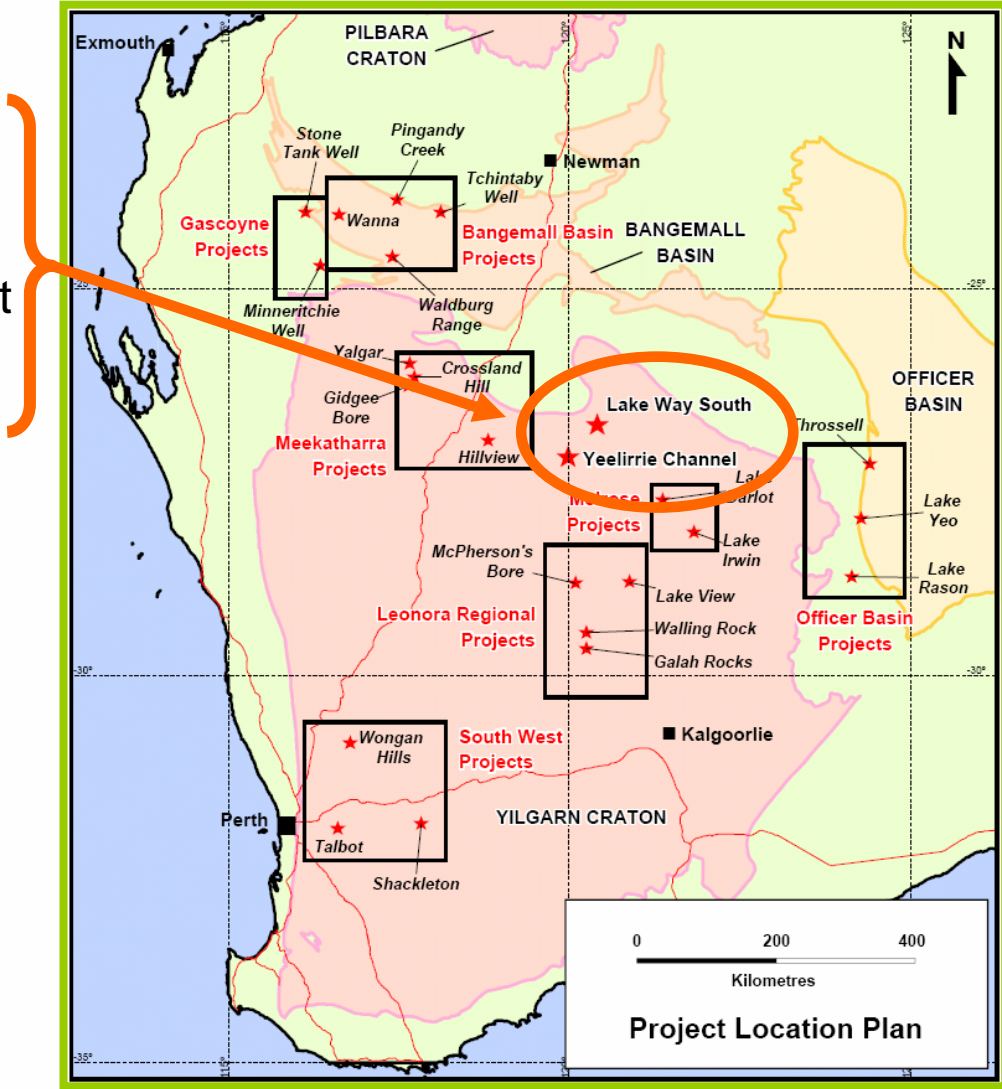
Encounter - WA Uranium

Project Portfolio

The Next 12 Months

ENR Project Portfolio

1. Extending known resources at Lake Way South
2. Satellite potential to BHP deposit at Yeelirrie
3. Advanced drill ready projects at Throssell, Hillview, Lakeview
4. Four unconformity style projects Bangemall Basin

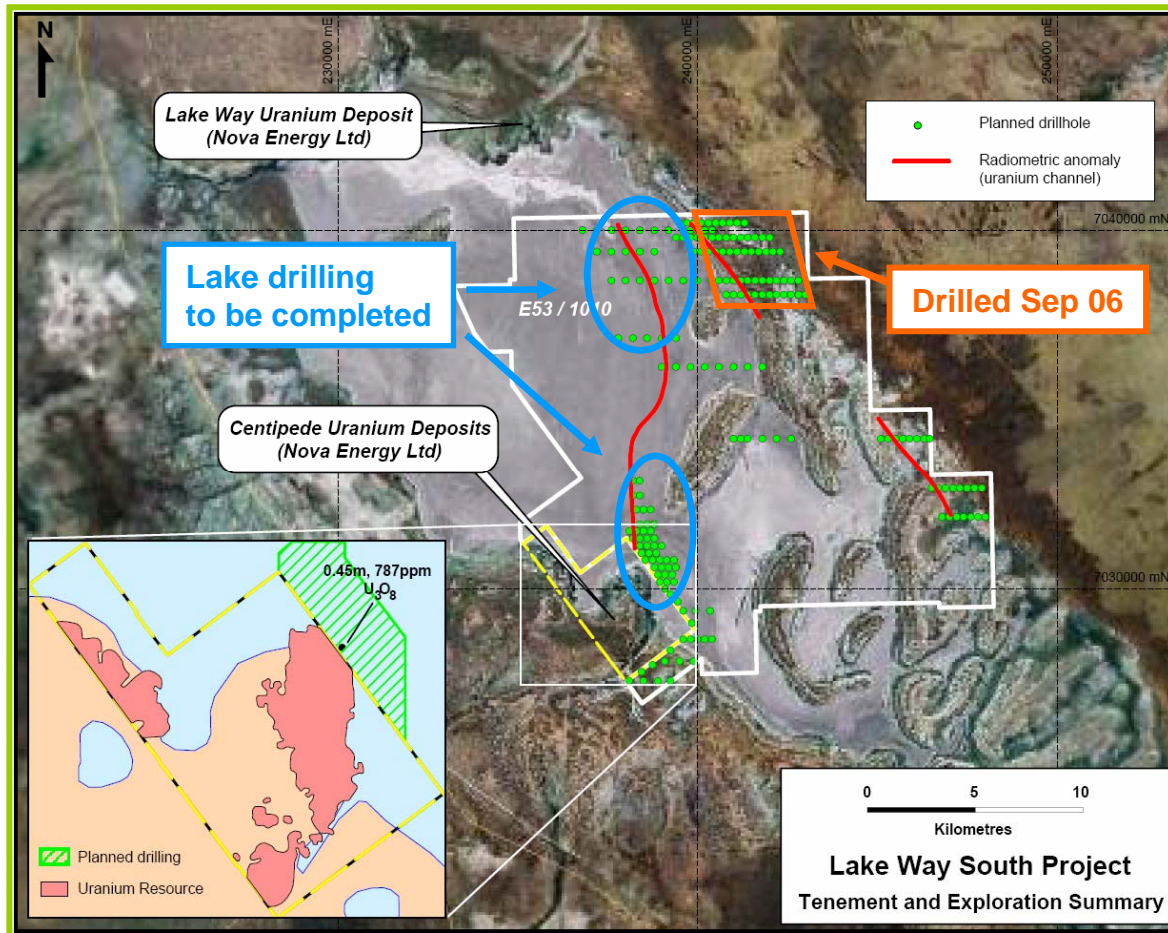


All projects Encounter 80% / Avoca 20%, except Lake Way 60% / 40%

Lake Way South

Centipede resource extends onto Encounter's ground

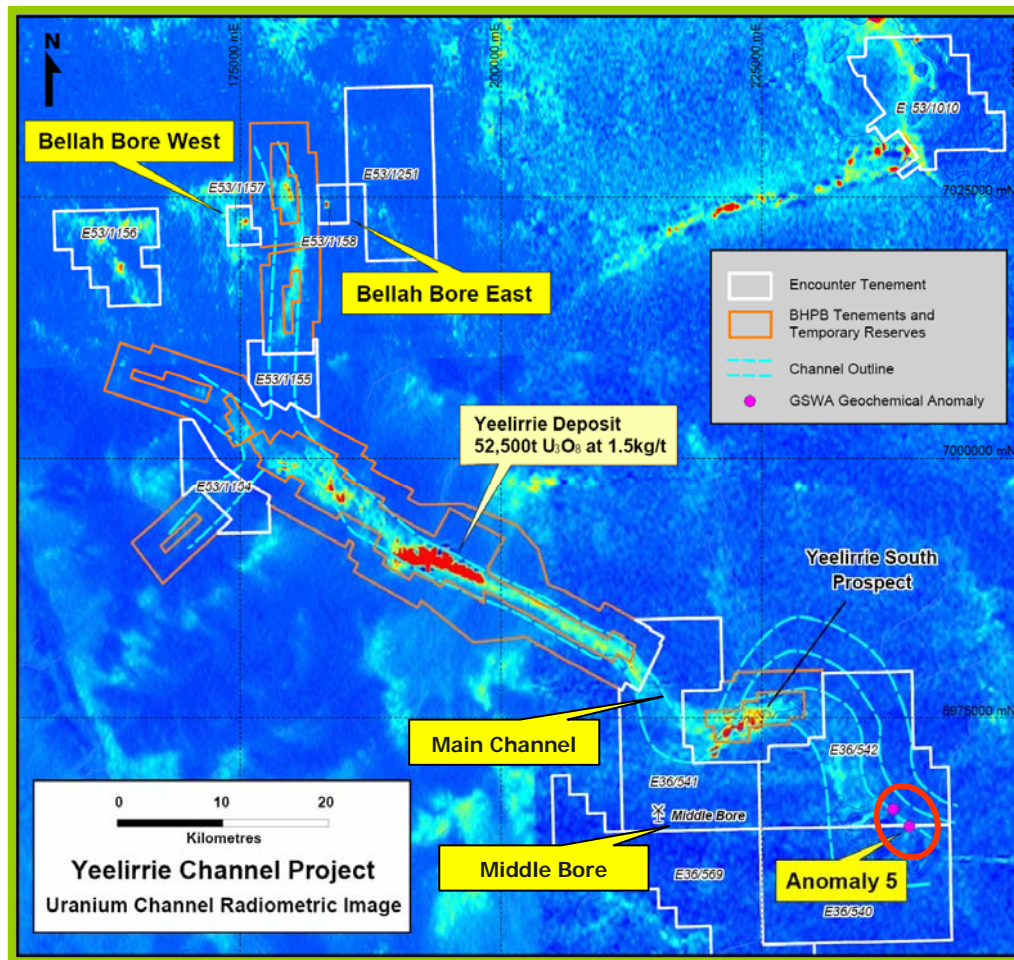
- Extending a known resource
- 12km of prospective drainage system
- Test radiometric trend over salt lake



Yeelirrie Channel

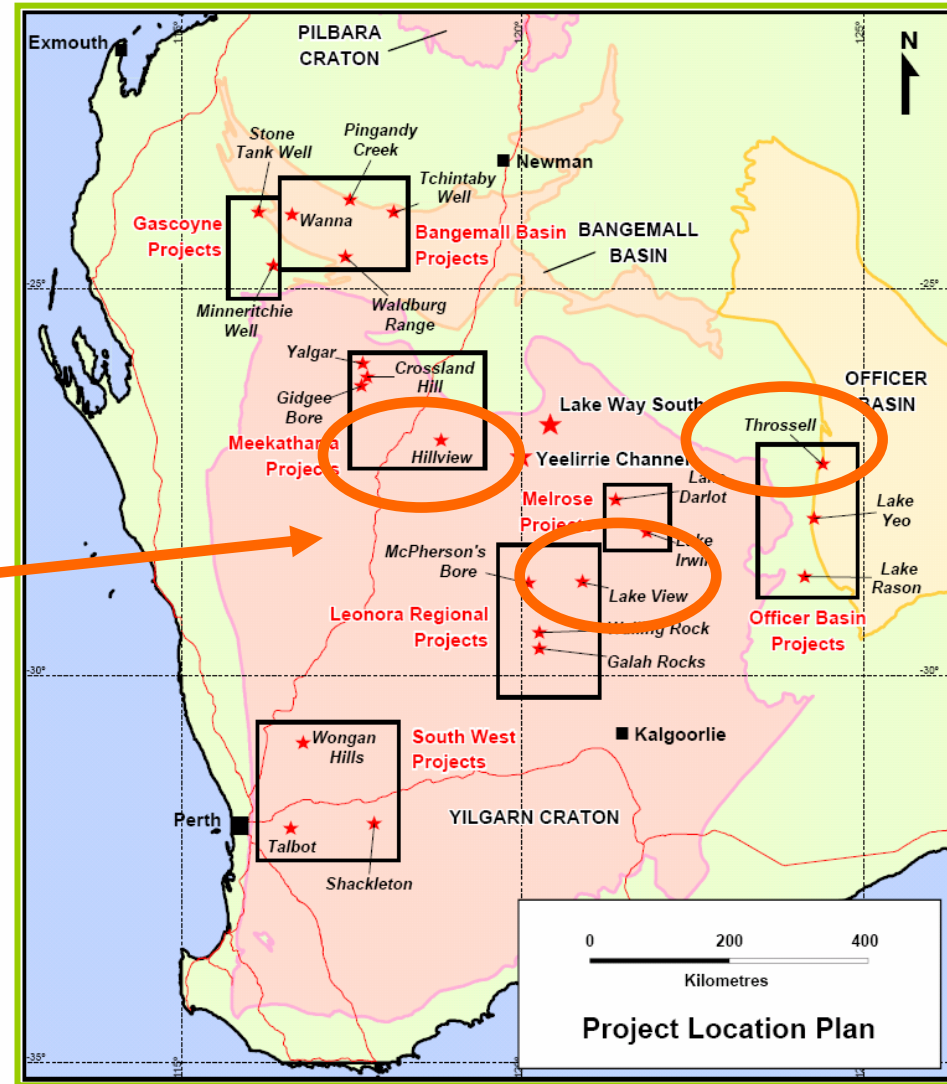
The premier ground position outside BHP's Yeelirrie deposit, world's largest calcrete U deposit

- Potential for satellites to main deposit
- Bellah Bore East
1m @ 2,111ppm U_3O_8
- 200 hole drill program Oct 06



ENR Project Portfolio

1. Extending known resources at Lake Way South
2. Satellite potential to BHP deposit at Yeelirrie
3. Advanced drill ready projects at Throssell, Hillview, Lakeview
4. Four unconformity style projects Bangemall Basin

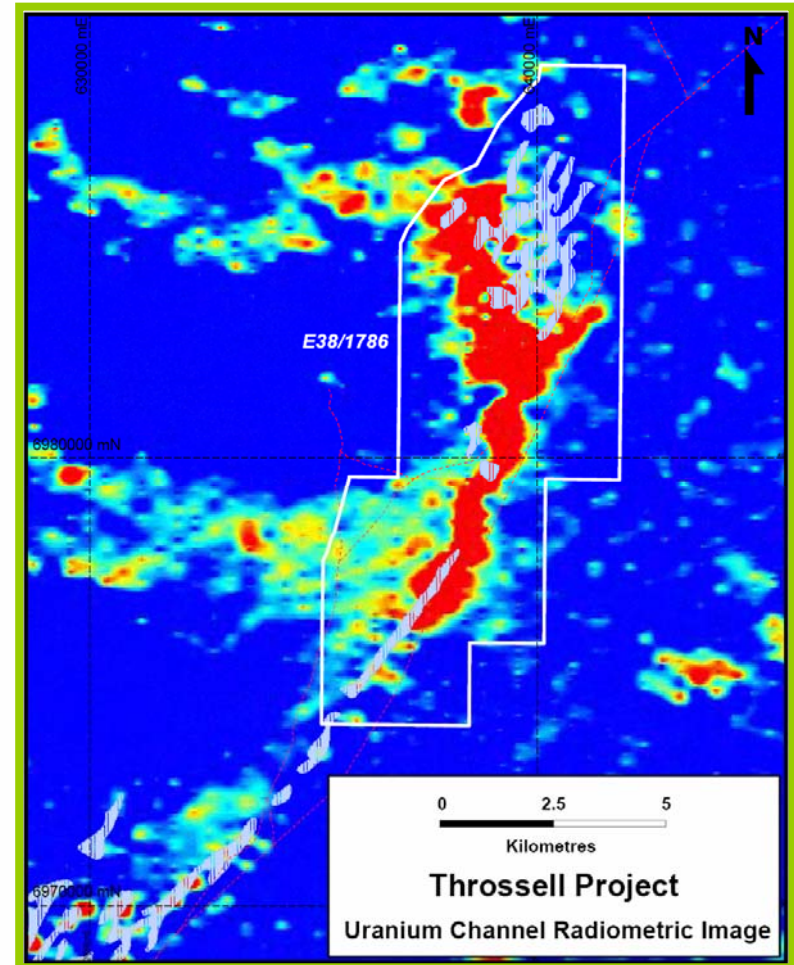


All projects Encounter 80% / Avoca 20%, except Lake Way 60% / 40%

Throssell

Large untested radiometric anomaly with mapped calcrete

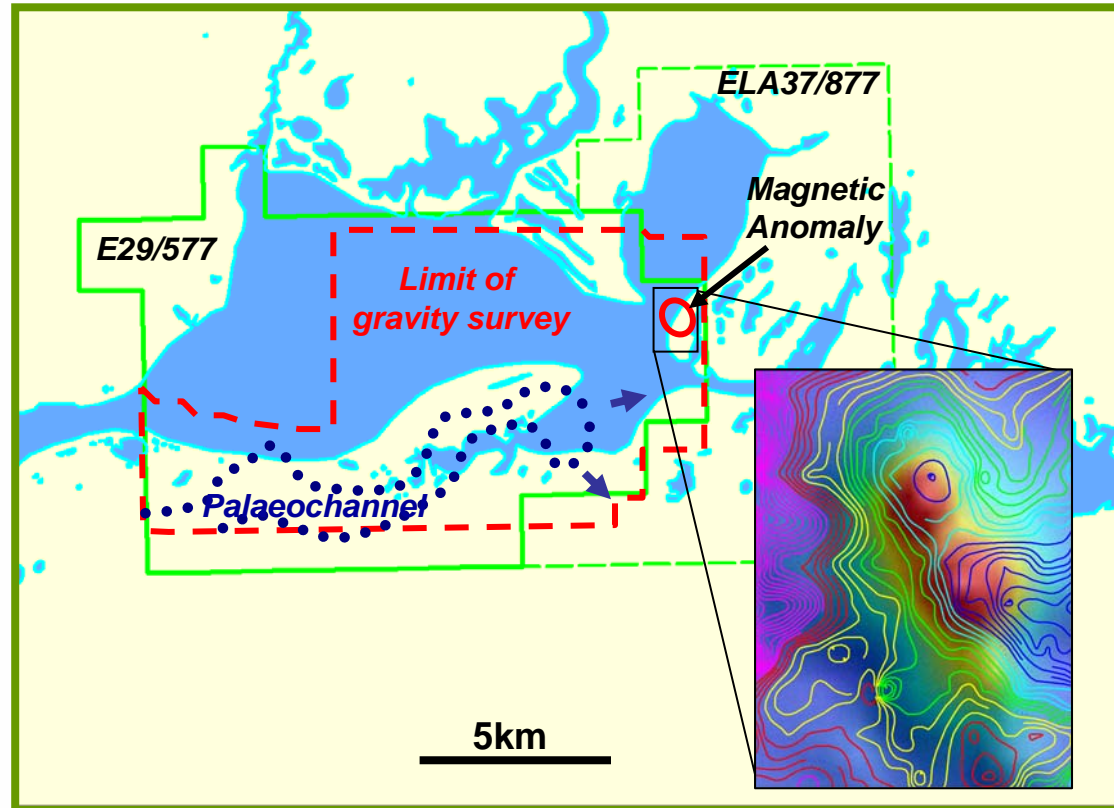
- 10km radiometric anomaly
- Major drainage system
- Outcropping calcrete zones



Lakeview

Newly identified palaeochannel position downstream of known uranium occurrences

- Radiometric & geochemical anomaly
- Gravity survey identified palaeochannel position
- Compelling diamond target

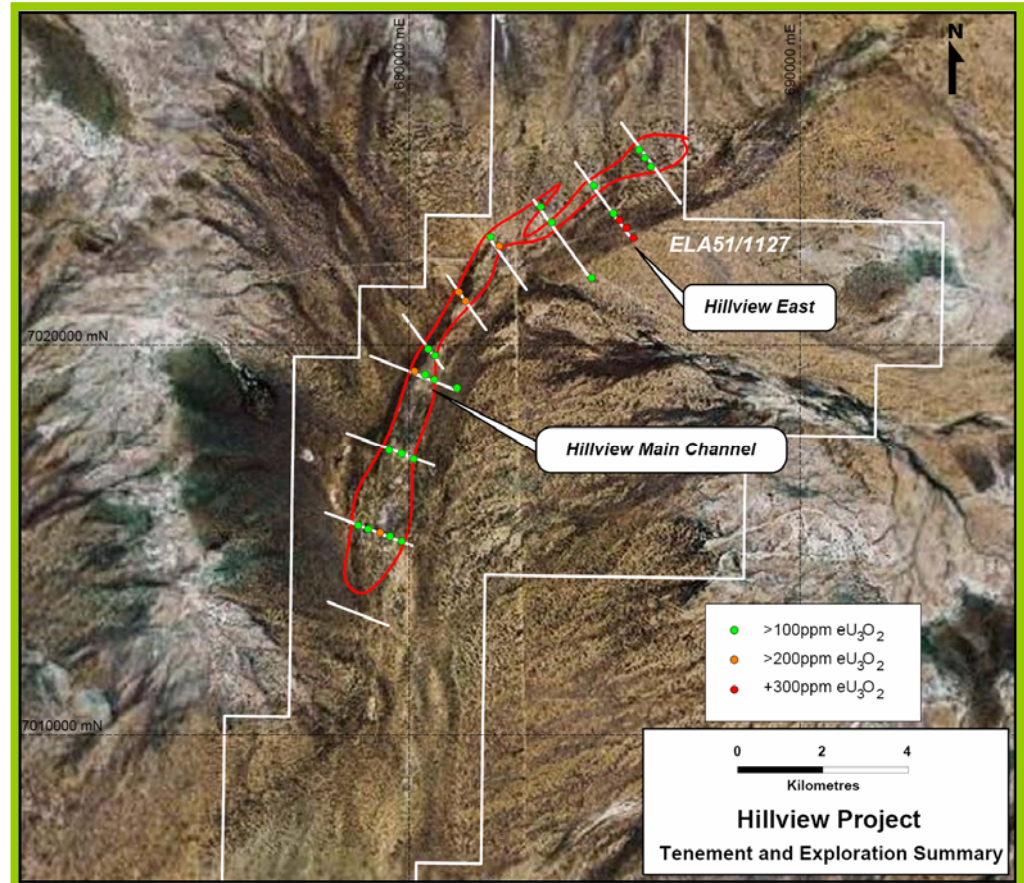


1VD gravity contours on the regional magnetics

Hillview

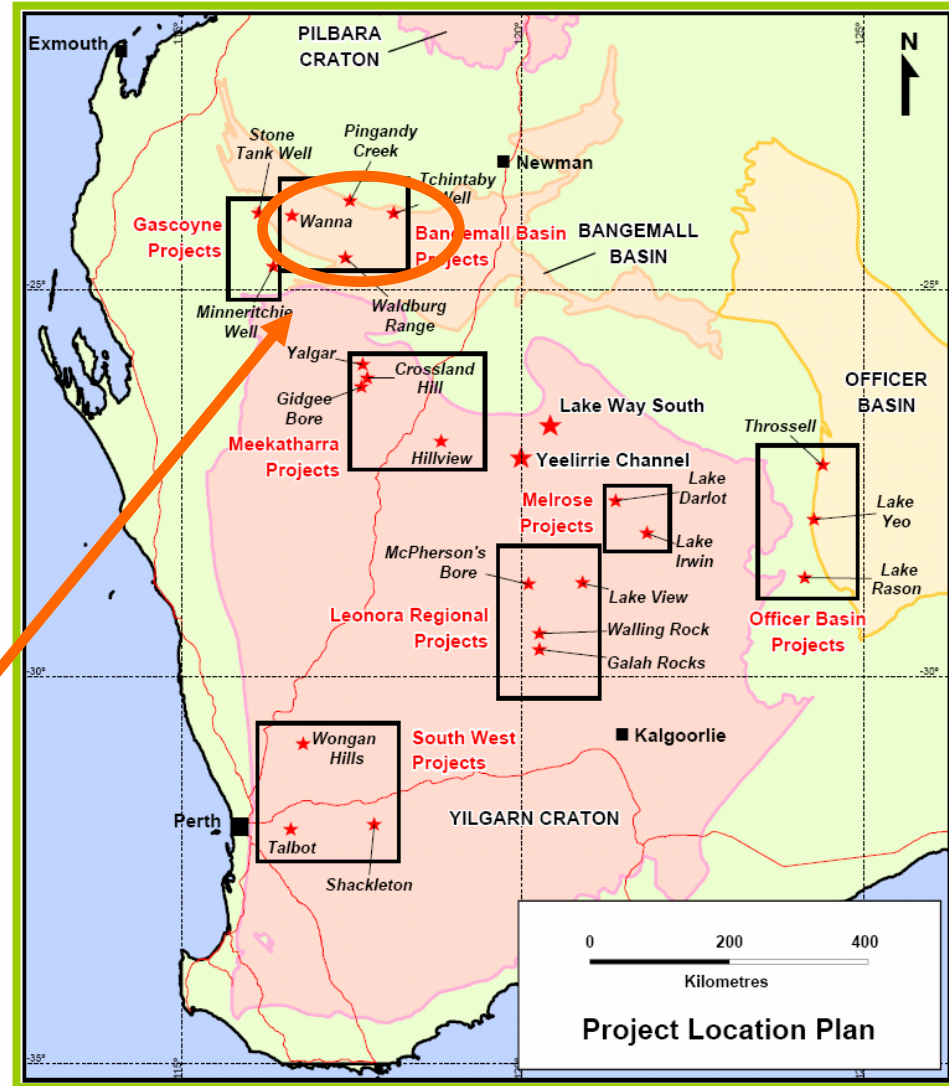
Historic uranium mineralisation with higher grade potential

- 15km long 100-200ppm U mineralised channel
- Opportunity to identify higher grade pods
- Higher grade potential at Hillview East



ENR Project Portfolio

1. Extending known resources at Lake Way South
2. Satellite potential to BHP deposit at Yeelirrie
3. Advanced drill ready projects at Throssell, Hillview, Lakeview
4. Four unconformity style projects Bangemall Basin

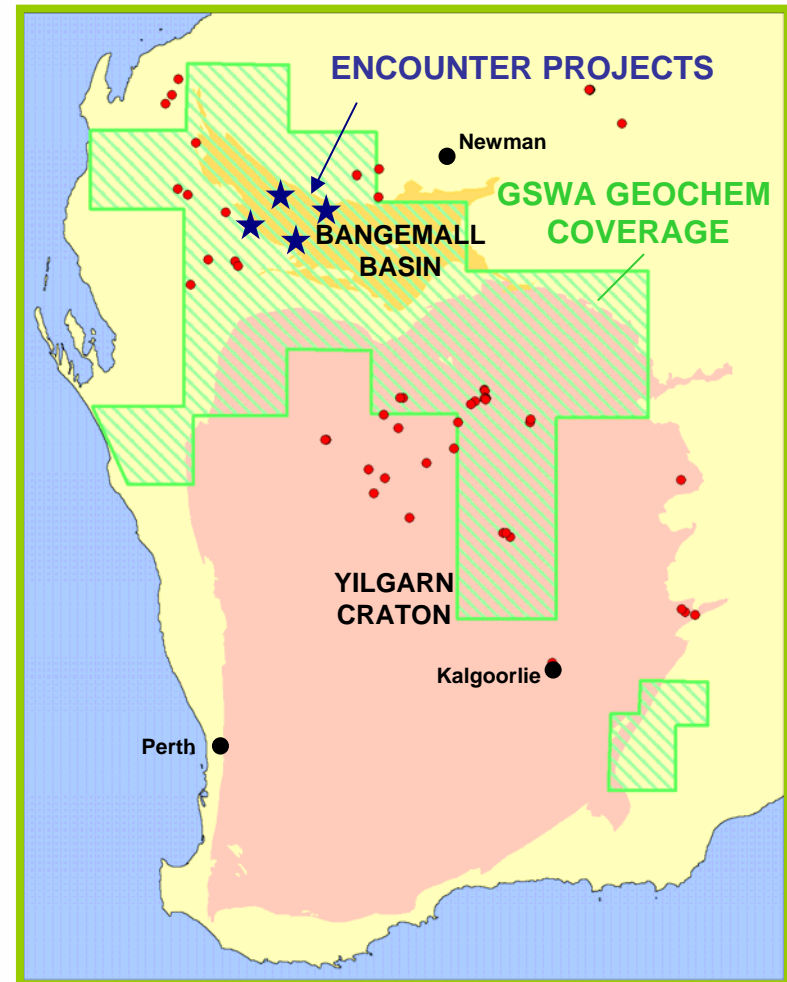


All projects Encounter 80% / Avoca 20%, except Lake Way 60% / 40%

Bangemall Basin Projects

...strong geochemical anomalies on major unconformity

- Geological setting for unconformity style uranium
- Multi-element dataset used for targeting
- Discrete geochemical anomalies



ENR Portfolio

Lake Way South

Extending known resources

Yeelirrie

Satellite potential to BHP deposit

Throssell, Hillview, Lakeview

Advanced drill ready projects

Bangemall Basin

Unconformity style projects

The next 12 months

- **Establish Calcrete Uranium Resources**

Lake based drilling at **Lake Way South**

Next phase of drilling at **Yeelirrie Channel**

Maiden drill programs at **Throssell, Lakeview** and **Hillview**

- **Progress Unconformity Style Projects**

Define drill targets at four projects on the margins of the **Bangemall Basin**

- **Assess additional opportunities**

Encounter – An Active Uranium Explorer

ENR has established a solid foundation:

- Assembled project portfolio early
- An experience exploration team
- Four drill programs initiated since listing
- New zones of mineralisation identified
- Generating new drill targets



Continued company growth through:

- Extensional resource drilling
- Completing drill programs at advanced targets
- Advance greenfields projects to generate drill targets
- Continue to expand project pipeline



**Exciting opportunity for brownfields
and greenfields discoveries**