



**AMEC Convention
Perth June 2010**



encounter

RESOURCES LIMITED

ABN 47 109 815 796

ASX : ENR

Corporate Information

Board

Paul Chapman - Chairman

Will Robinson - Managing Director

Peter Bewick - Exploration Director

Jon Hronsky - Non-Executive Director

Kevin Hart / Dan Travers - Company Sec.

Issued Capital:

79.2m Ordinary Shares (Top 20 - 71%)

2.8m Employee Options

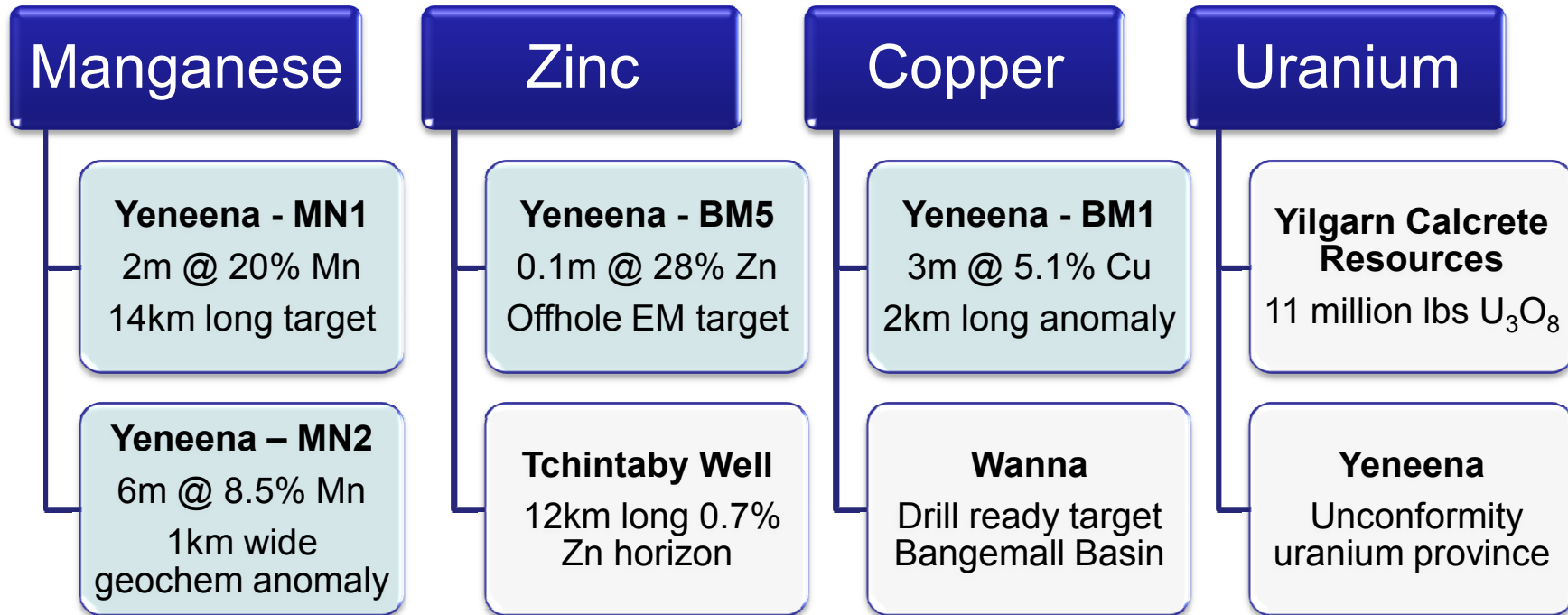
Market Cap:

\$27.7m @ \$0.35/share

Cash (31/03/10):

\$3.8m

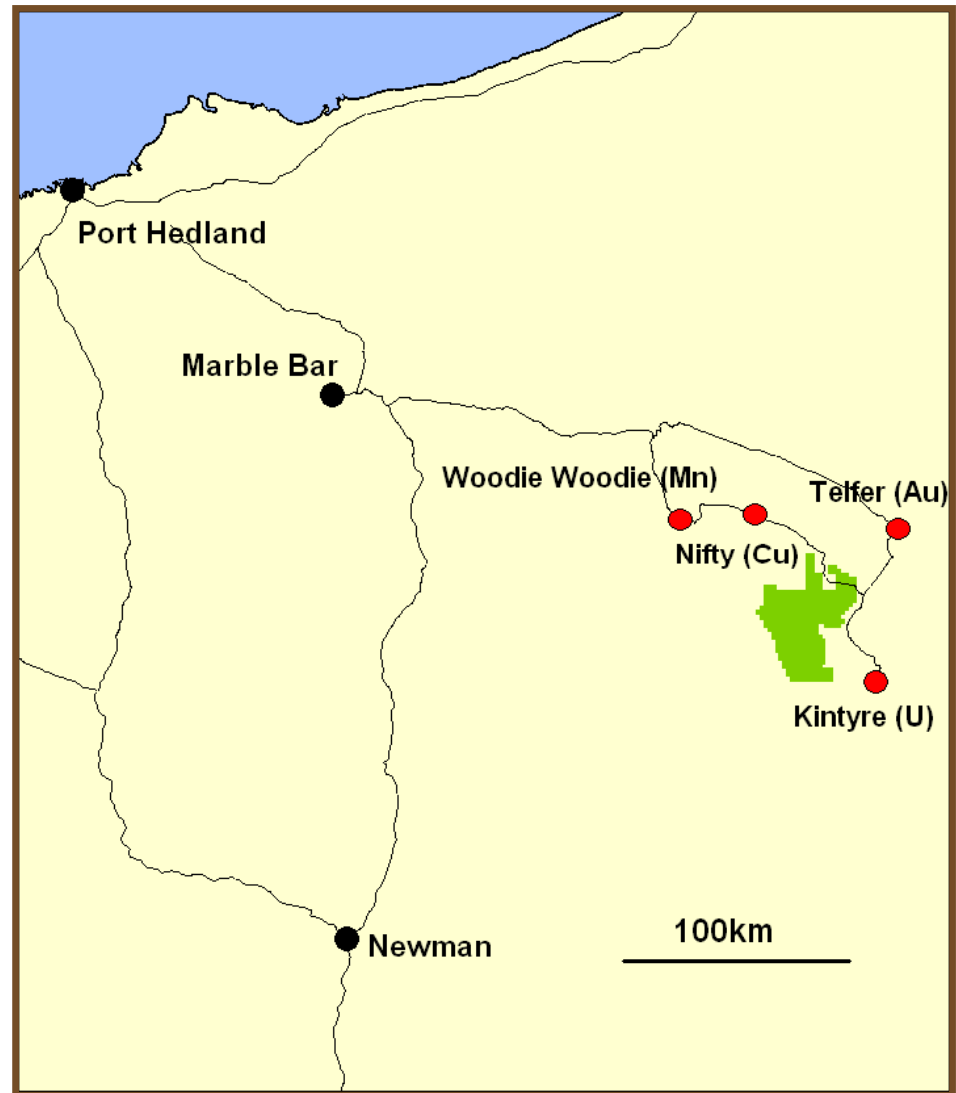
Company Snapshot – Diversified Explorer



- **Drilling for “Major New Discoveries”**
- **Experienced & dedicated management**
- **Solid cash position**

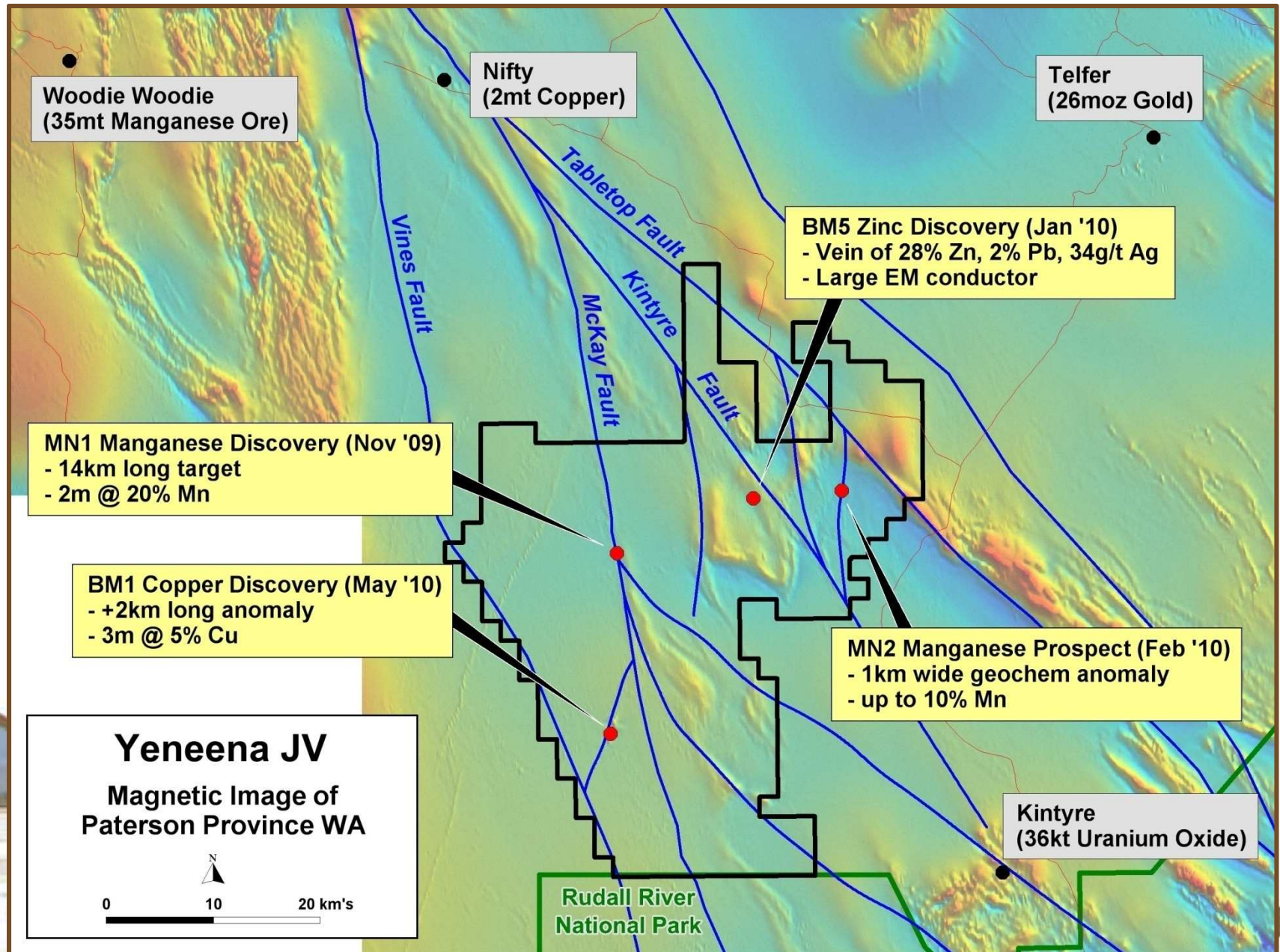
Yeneena Project – Paterson Province (WA)

- Major land position in highly endowed mineral belt, now 100% owned (1300 km²)
- Multiple commodity targets
- Good infrastructure
- High grade copper, zinc & manganese drill intersections
- Aircore and diamond drill programs in progress



100% Encounter

Major land position amongst giant mineral deposits



BM1 Copper Discovery

- Located on the regionally significant McKay Fault which extends to the Nifty copper mine 60km north
- June 2009 - Three broad spaced aircore drill traverses intersected highly anomalous copper
- Oct 2009 - Diamond program identified a major hydrothermal alteration system (see photo)
- May 2010 – Aircore drilling discovers high grade copper

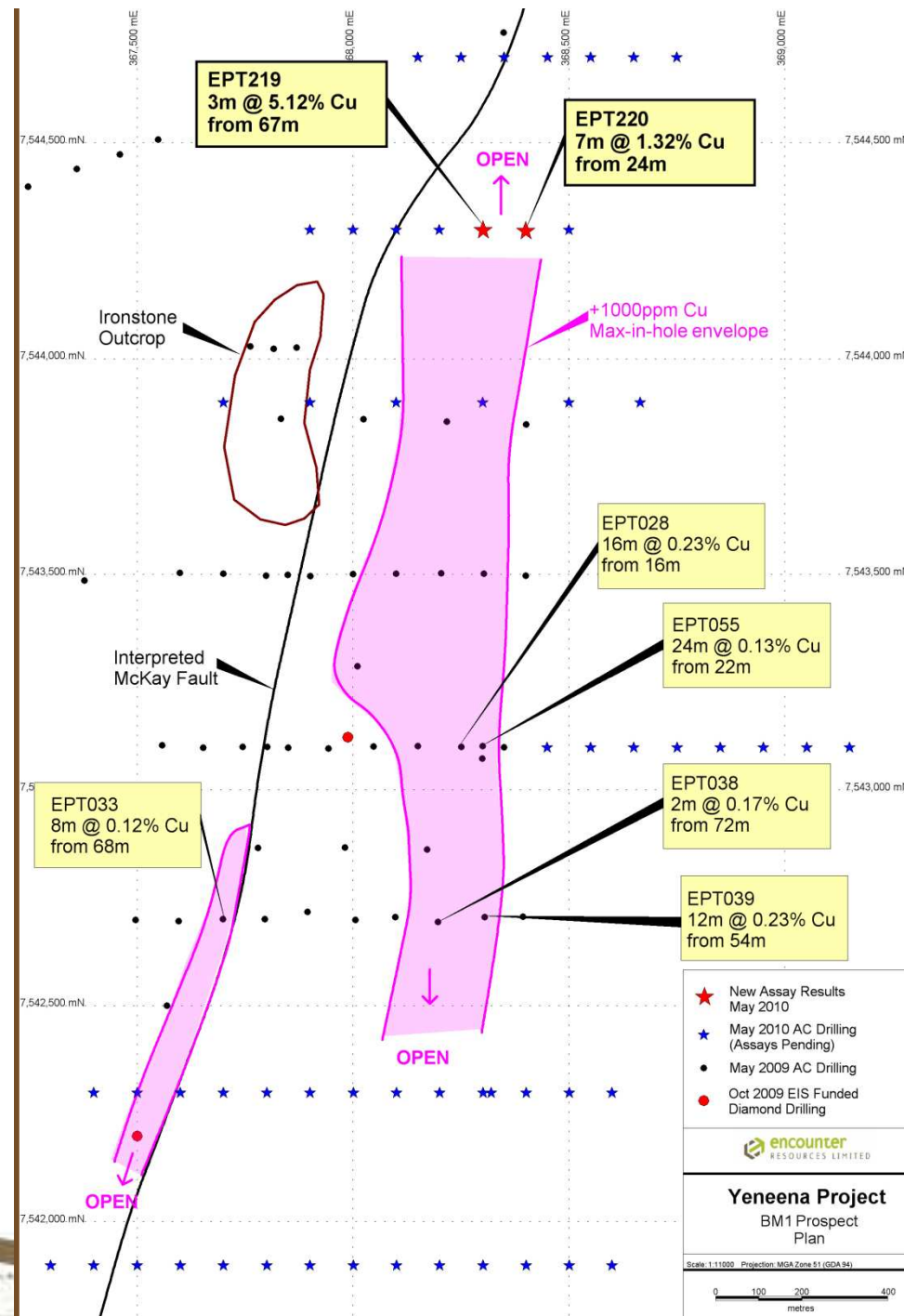


Intense hematite alteration of brecciated dolomite

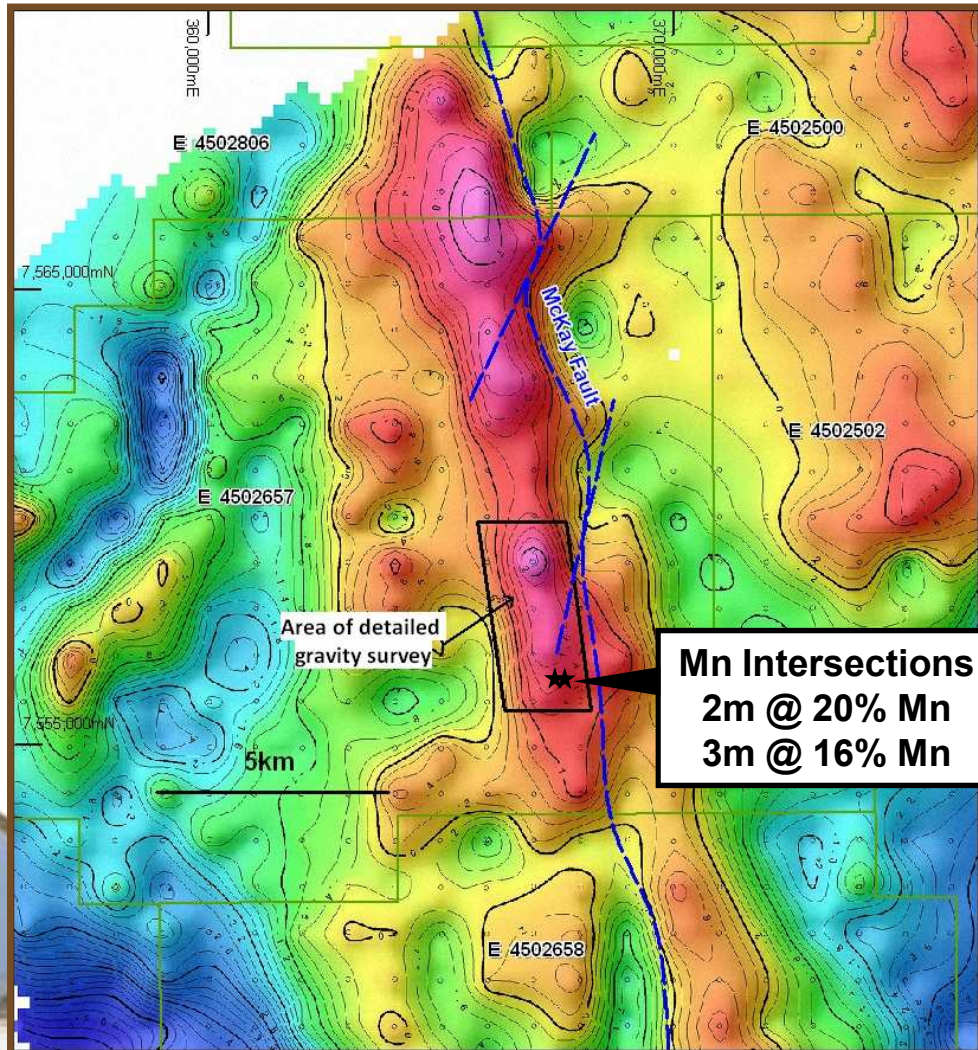
The diamond program was co-funded by the WA Government under the Exploration Incentive Scheme

BM1 Copper Discovery

- Aircore drilling discovered high grade, shallow copper mineralisation
 - **3m @ 5.12% copper from 67m**
 - **7m @ 1.32% copper from 24m**
- Only partial assays from two holes, remaining assays expected towards the end of June
- Mineralisation remains open to the north and at depth
- Drilling program expanded and follow up program planned for August



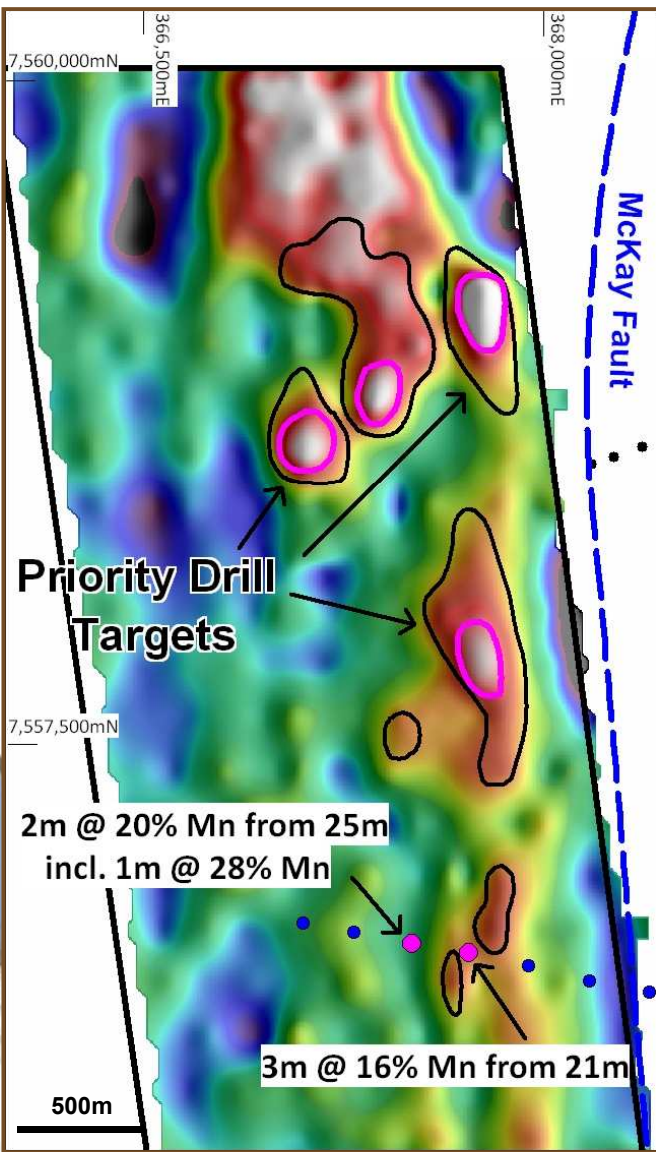
MN1 – 14km Long Target



- 70km from Woodie Woodie
- Two near surface intersections, 200m apart in adjacent vertical aircore holes
- Mineralisation intersected in the one line of drilling completed within the 14km long gravity anomaly
- Target area footprint is similar to the Woodie Woodie camp
- Detailed gravity survey completed over southern 4km

MN1 – Woodie Woodie Scale Opportunity

MN1 - Residual gravity image



Woodie Woodie (same scale)



- Ground gravity survey has defined multiple manganese drill targets
- Historical intersections are outside the most intense gravity features
- Drill hole re-sampling has confirmed primary manganese grades up to **29% Mn** and low iron
- Drilling in progress

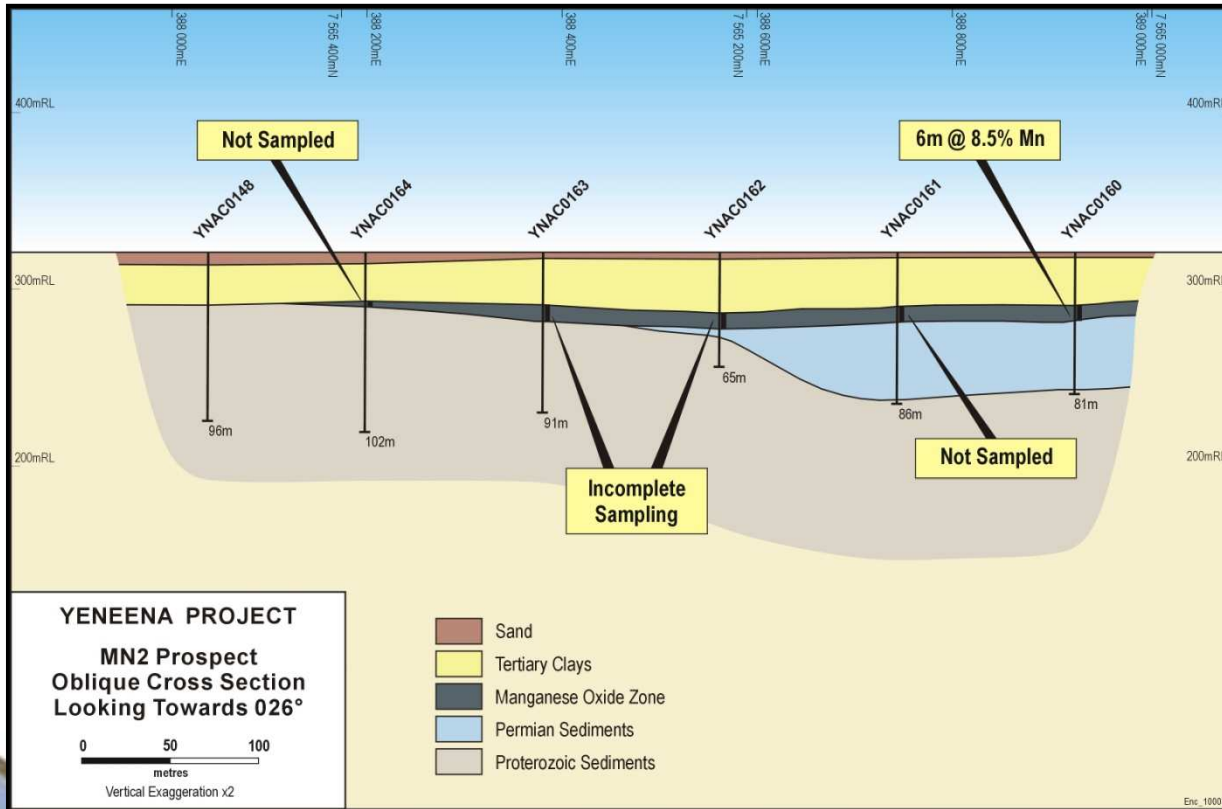
MN1 – 100% Sand Cover



Mn oxide in YNAC168



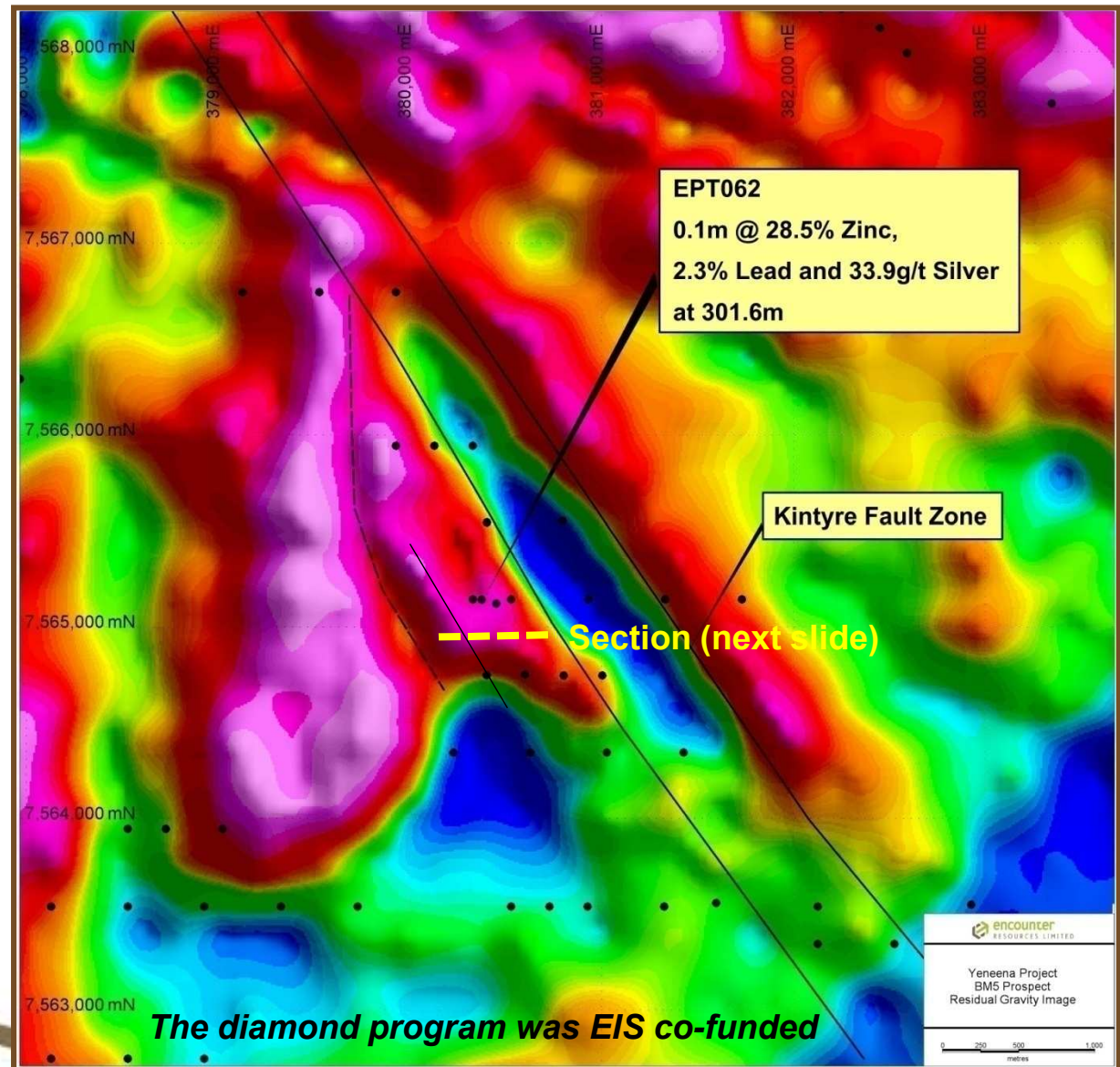
MN2 – Large Scale Undercover Mn Anomaly



- 1km wide Mn anomaly
- Limited sampling has produced **6m @ 8.5%Mn**
- Mineralisation open north, south and east.
- Drilling June 2010

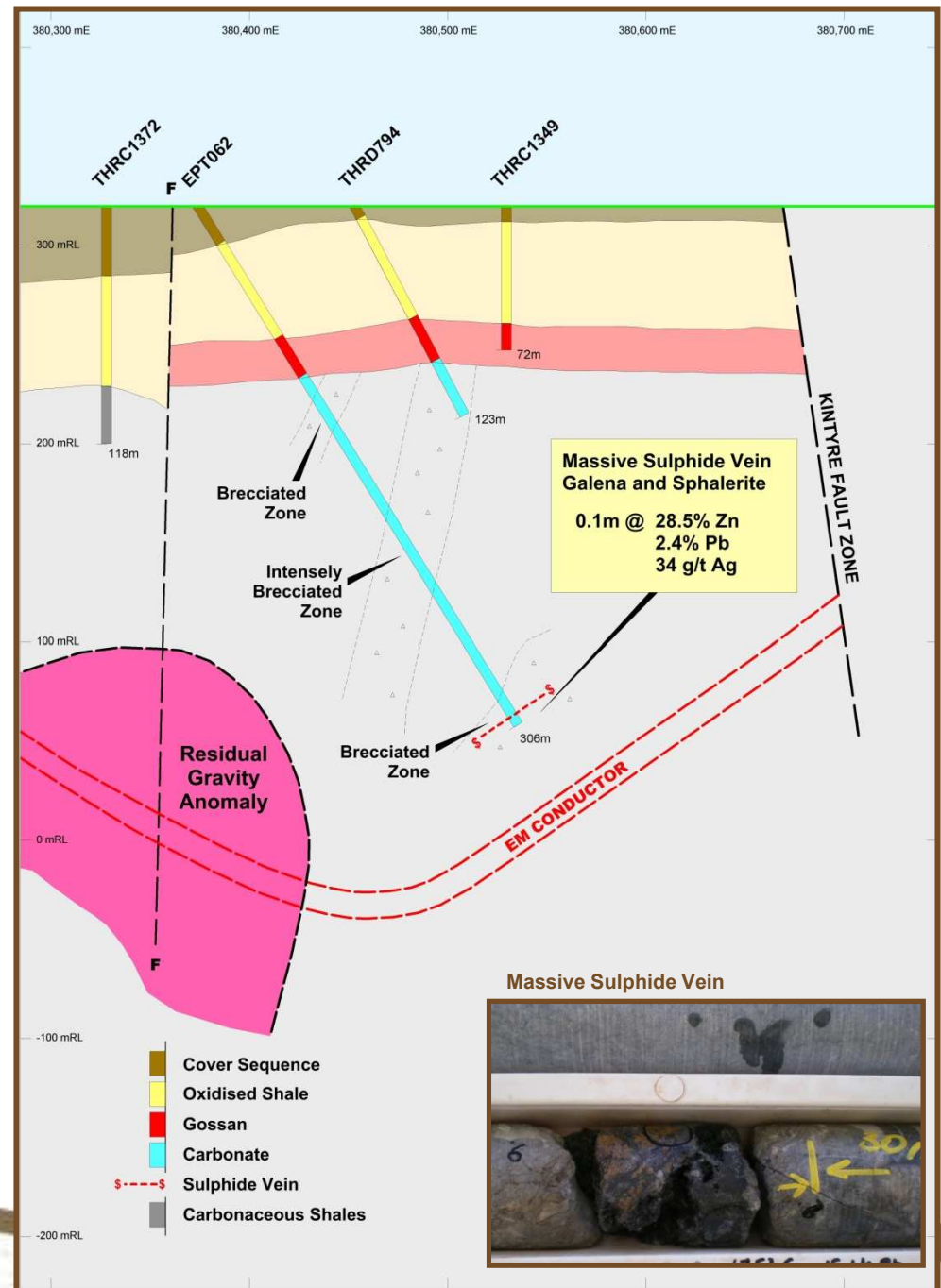
BM5 Zinc Target

- The first diamond drill hole intersected high grade zinc mineralisation
- **28.5% zinc**, 2.3% lead and 34g/t silver over 0.1 metres near the bottom of the hole
- Detailed gravity survey completed in April 2010
- Significant residual gravity anomaly identified



BM5 Zinc Target

- A significant offhole conductor approximately 60m below the bottom of hole
- Coincident EM and gravity anomalies to the west of the massive sulphide vein
- Target located adjacent to the intersection of major regional structures
- Diamond drill program has commenced



Yeneena Project - The Immediate Focus

Mn

- Multiple high grade intersections
- 4000m aircore drill program

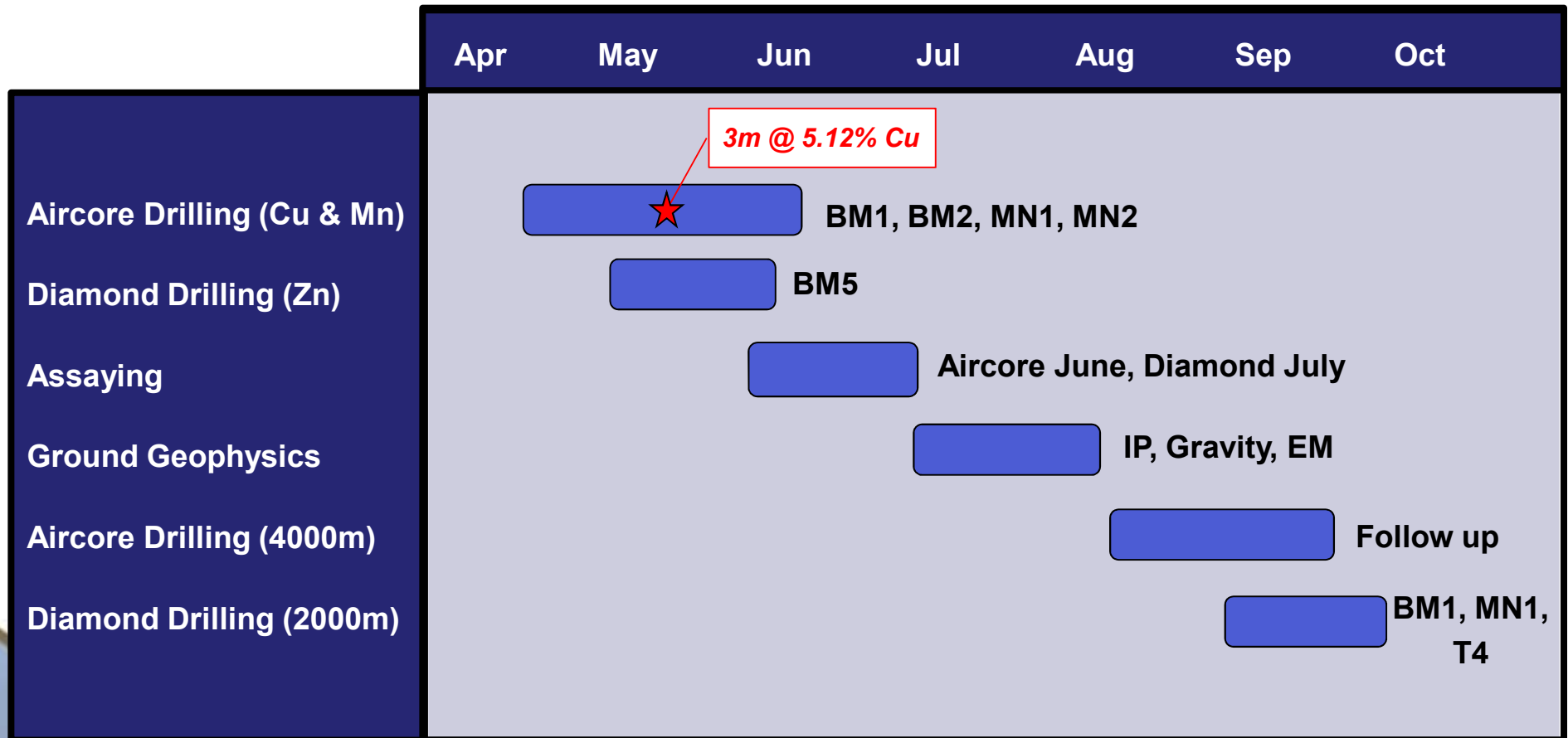
Cu

- +2km regolith anomaly
- 3m @ 5.12% Cu, 7m @ 1.32% Cu
- Drill program expanded

Zn

- Massive sulphide discovery - 28% Zn
- Diamond drilling of EM anomaly

The Next 6 Months - Yeneena Project



Disclaimer & Compliance Statement

This presentation has been prepared by Encounter Resources Limited (“Encounter”). The information contained in this presentation is a professional opinion only and is given in good faith. Certain information in this document has been derived from third parties and though Encounter has no reason to believe that it is not accurate, reliable or complete, it has not been independently audited or verified by Encounter.

Any forward-looking statements included in this document involve subjective judgement and analysis and are subject to uncertainties, risks and contingencies, many of which are outside the control of, and maybe unknown to Encounter. In particular, they speak only as of the date of this document, they assume the success of Encounter’s strategies, and they are subject to significant regulatory, business, competitive and economic uncertainties and risks. Actual future events may vary materially from the forward looking statements and the assumptions on which the forward looking statements are based. Recipients of this document (“Recipients”) are cautioned to not place undue reliance on such forward-looking statements.

Encounter makes no representation or warranty as to the accuracy, reliability or completeness of information in this document and does not take responsibility for updating any information or correcting any error or omission which may become apparent after this document has been issued.

To the extent permitted by law, Encounter and its officers, employees, related bodies corporate and agents (“Agents”) disclaim all liability, direct, indirect or consequential (and whether or not arising out of the negligence, default or lack of care of Encounter and/or any of its Agents) for any loss or damage suffered by a Recipient or other persons arising out of, or in connection with, any use or reliance on this presentation or information.

The information in this report that relates to Exploration Results is based on information compiled by Mr. Peter Bewick who is a Member of the Australasian Institute of Mining and Metallurgy. Mr. Bewick is a full time employee of Encounter Resources Ltd and has sufficient experience which is relevant to the style of mineralisation under consideration to qualify as a Competent Person as defined in the 2004 Edition of the 'Australian Code for Reporting of Exploration Results, Mineral Resources and Ore Reserves'. Mr. Bewick consents to the inclusion in the presentation of the matters based on his information in the form and context in which it appears.