



## Annual General Meeting Presentation



**Perth, WA  
22 November 2010**

# Resolutions & Valid Proxy Votes

	FOR	AGAINST	ABSTAIN	OPEN
<b>AGENDA ITEM TWO</b>				
Adoption of Remuneration Report	19,791,957	17,475	16,259,400	1,613,623
<b>AGENDA ITEM THREE</b>				
Re-election of Mr Peter Bewick as a Director	36,068,832	-	-	1,613,623
<b>AGENDA ITEM FOUR</b>				
Ratification of Prior Issue of Equity Securities	36,049,357	17,475	2,000	1,613,623
<b>AGENDA ITEM FIVE A</b>				
Grant of Options to Director – Mr Peter Bewick	31,383,857	38,525	4,650,000	1,610,073
<b>AGENDA ITEM FIVE B</b>				
Grant of Options to Director – Dr Jonathan Hronsky	36,039,357	23,025	-	1,620,073

# Corporate Information

## Board

Paul Chapman - Chairman  
Will Robinson - Managing Director  
Peter Bewick - Exploration Director  
Jon Hronsky - Non-Executive Director  
Kevin Hart / Dan Travers - Company Sec.

## Issued Capital:

91.5m Ordinary Shares  
1.9m Employee Options

## Market Cap:

\$105m @ \$1.15/share

## Cash (30/09/10):

\$4.2m (\*placement \$6m Dec Qtr)

## Company Snapshot – Diversified Explorer



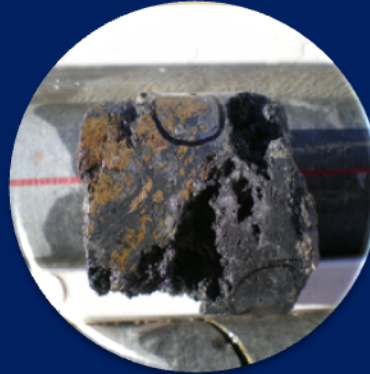
### Copper

High grade  
discovery at BM1  
Potential new  
copper province



### Manganese

Near surface  
+20% Mn  
Multiple targets



### Zinc

Assays up to 28%  
Zn, 2.3% Pb,  
34g/t Ag



### Uranium

11 million lbs  
near surface  $U_3O_8$   
inferred resource

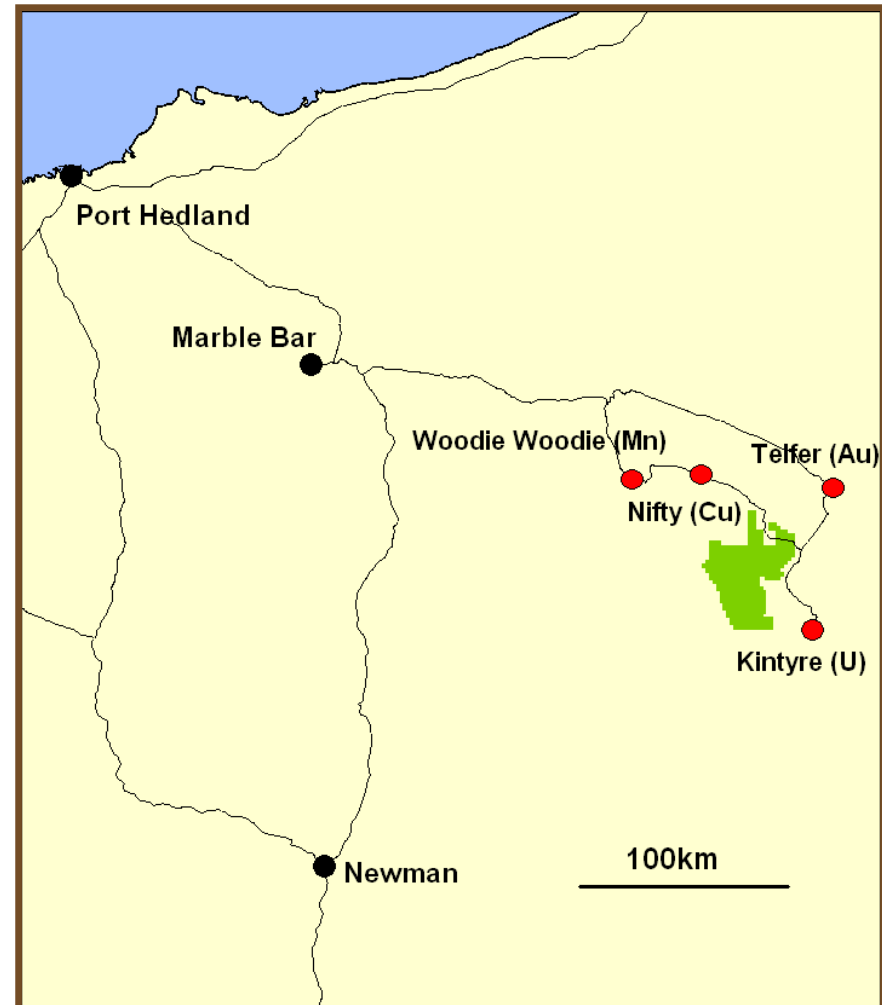
- Exploring for “Major New Mineral Discoveries”
- Experienced, dedicated and professional team



**encounter**  
RESOURCES LIMITED

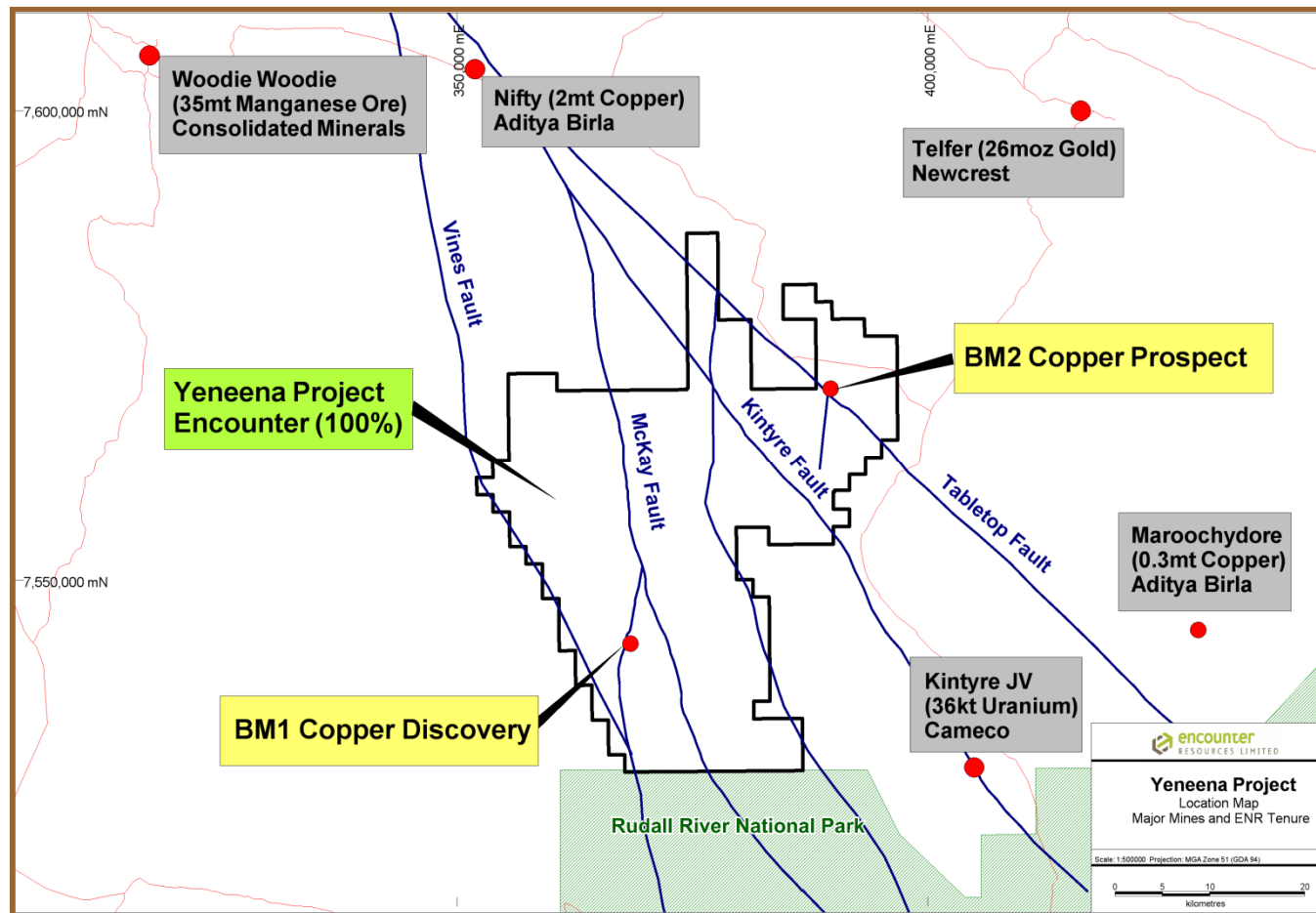
# Yeneena Project – Paterson Province (WA)

- Major land position in highly endowed mineral belt, now 100% owned (1300 km<sup>2</sup>)
- Multiple commodity targets
- Good infrastructure
- Potential new copper province



100% Encounter

# Major land position amongst giant mineral deposits



*...potential for multiple copper deposits under sand cover*

# Yeneena Project – Road to BM1

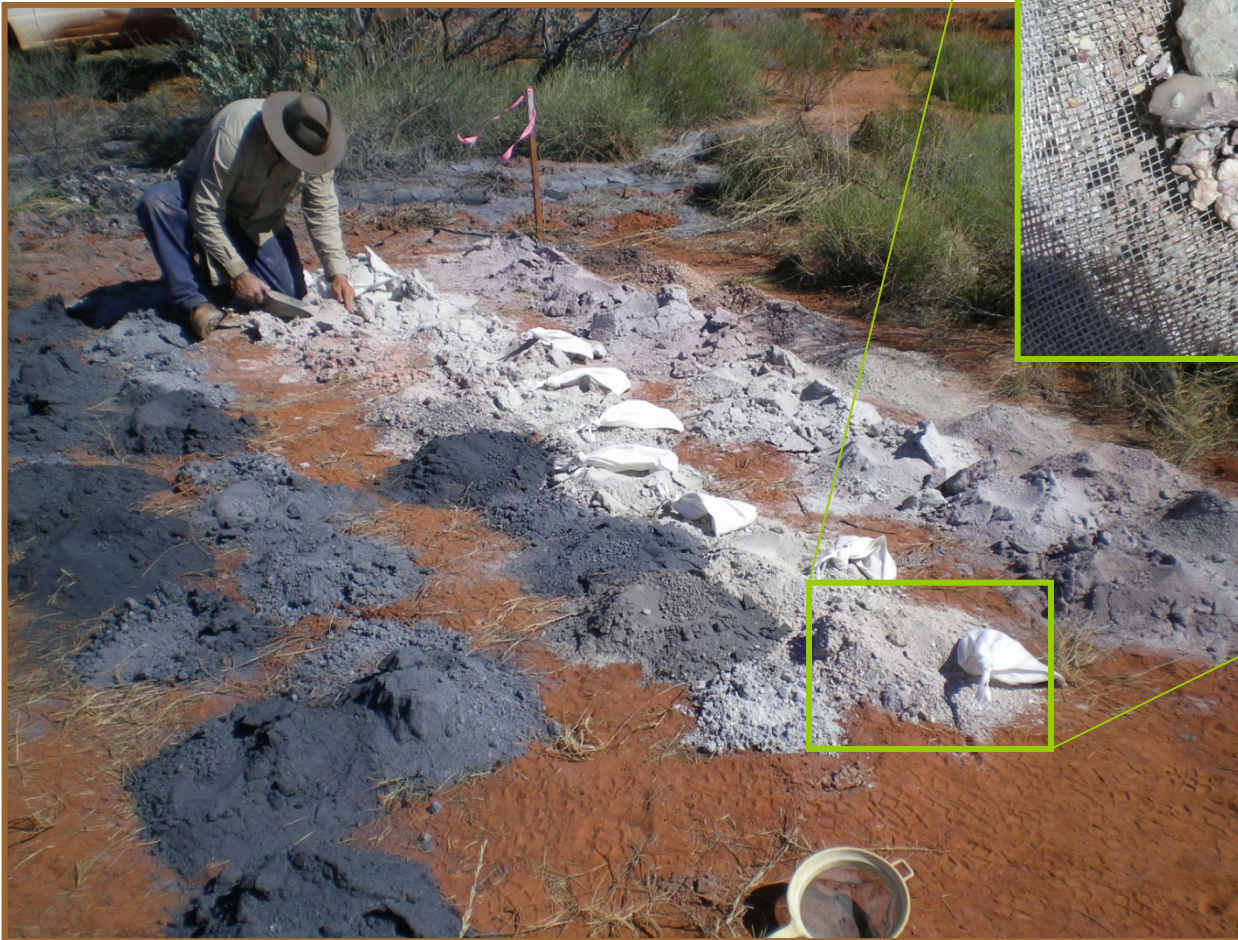


# BM1 Discovery Hole

*EPT 220 8m @ 1.1% copper from 24m*



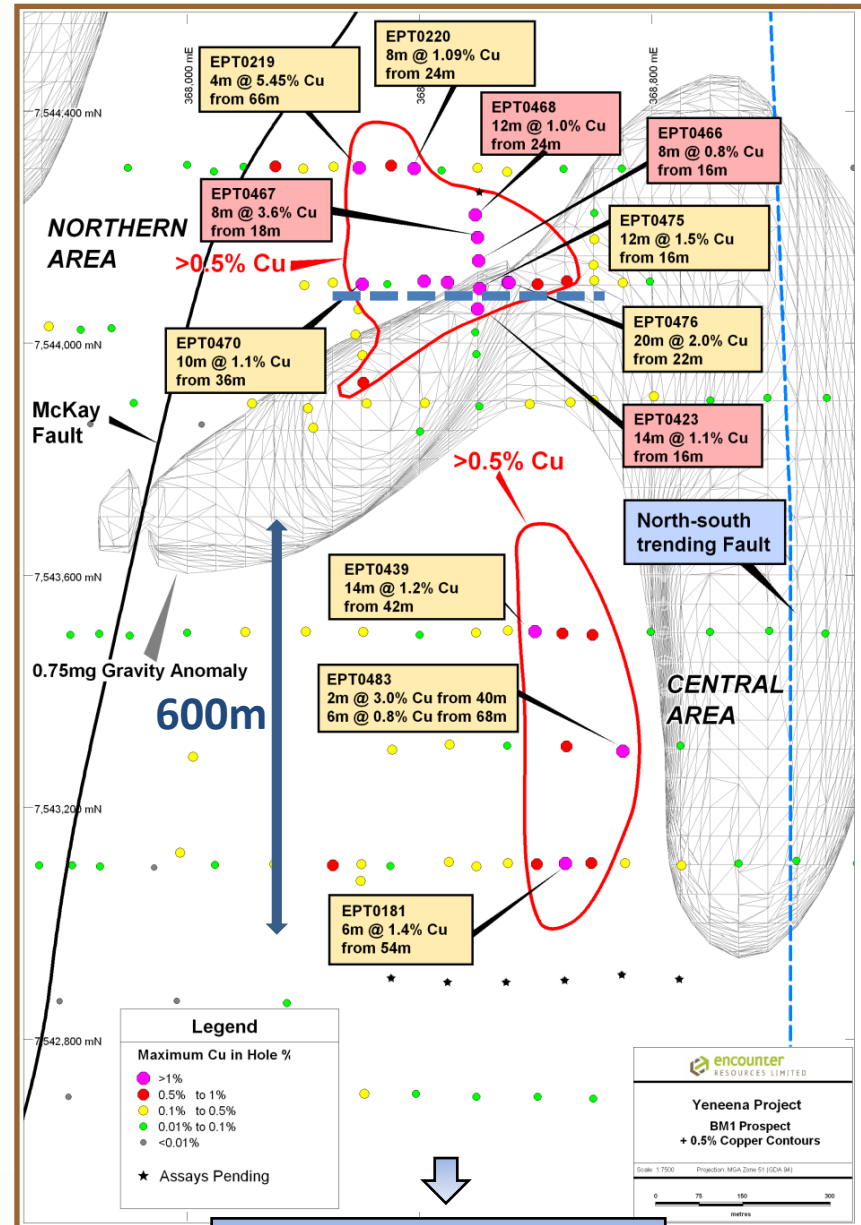
*EPT 220 29-30m  
2.8% copper*





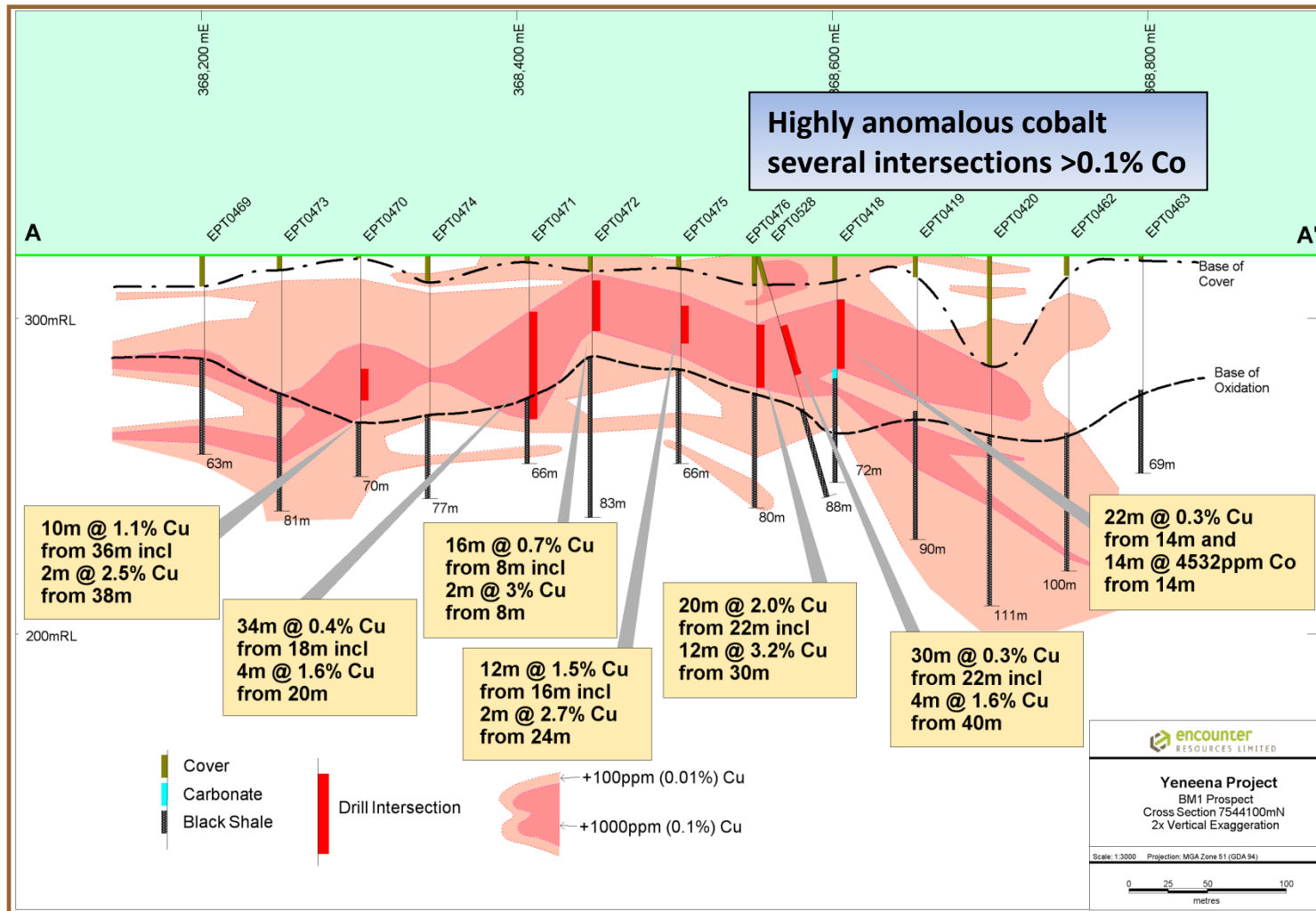
# BM1 Copper Discovery

- Multiple thick, near surface intersections grading over 1% copper
- Coherent copper mineralisation over an extensive area
  - 20m @ 2.0% Cu from 22m (incl. 12m @ 3.2% Cu)
  - 12m @ 1.5% Cu from 16m (incl. 2m @ 2.7% Cu)
  - 10m @ 1.1% Cu from 36m (incl. 2m @ 2.5% Cu)
  - 8m @ 3.6% Cu from 18m (incl. 2m @ 7.6% Cu)
  - 4m @ 5.5% Cu from 66m
- Highly anomalous cobalt - (14m @ 0.5% Co)
- Gravity anomaly adjacent to the high grade copper zone
- A second zone of near surface copper mineralisation discovered in Central Area

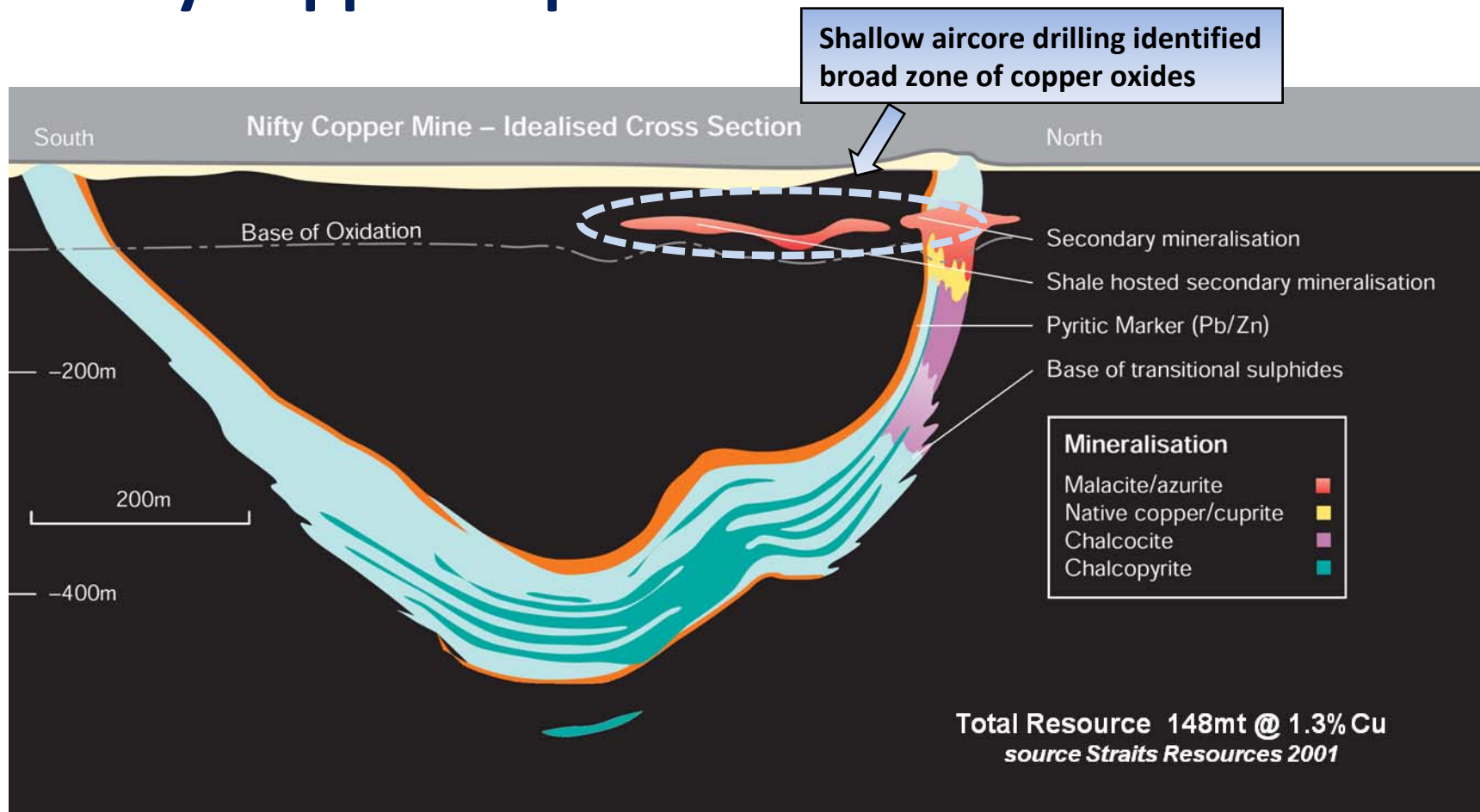


Regolith copper anomaly extends over 3km

# BM1 Northern Area - Section A – A'

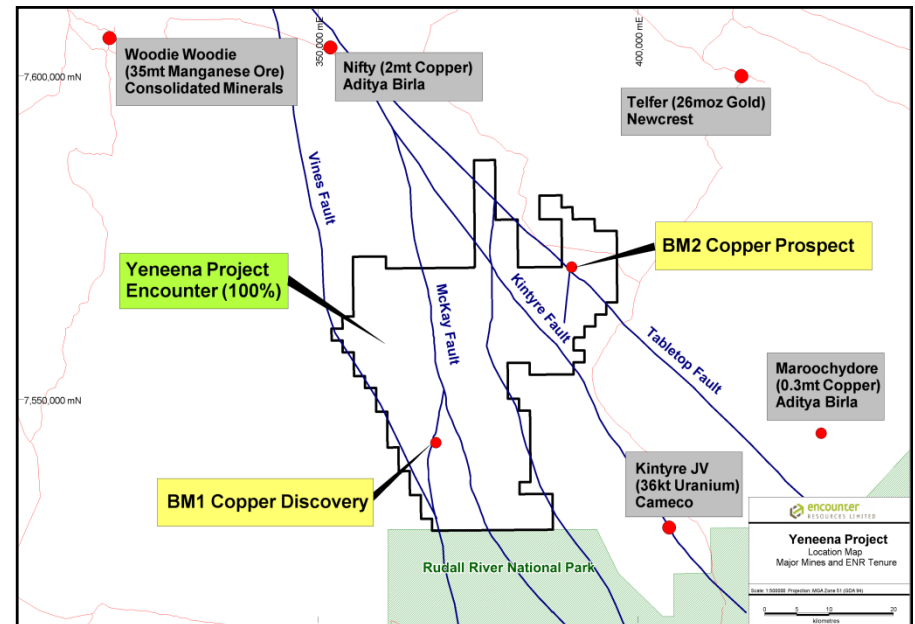


# Nifty Copper Deposit



# BM2 – Second Copper System

- Shallow drilling has confirmed a mineralised copper system at BM2
- Extensive copper regolith enrichment continuous over a large area
- Several of the shallow holes terminated in anomalous copper
  - 30m @ 0.14% Cu from 42m to end of hole including **2m @ 0.88% Cu**
  - 28m @ 0.18% Cu from 54m including **4m @ 0.48% Cu & 2m @ 0.41% Cu**
  - 36m @ 0.17% Cu from 76m to end of hole including **6m @ 0.37% Cu**
  - 20m @ 0.27% Cu from 62m including **4m @ 0.57% Cu**
- Detailed gravity survey completed



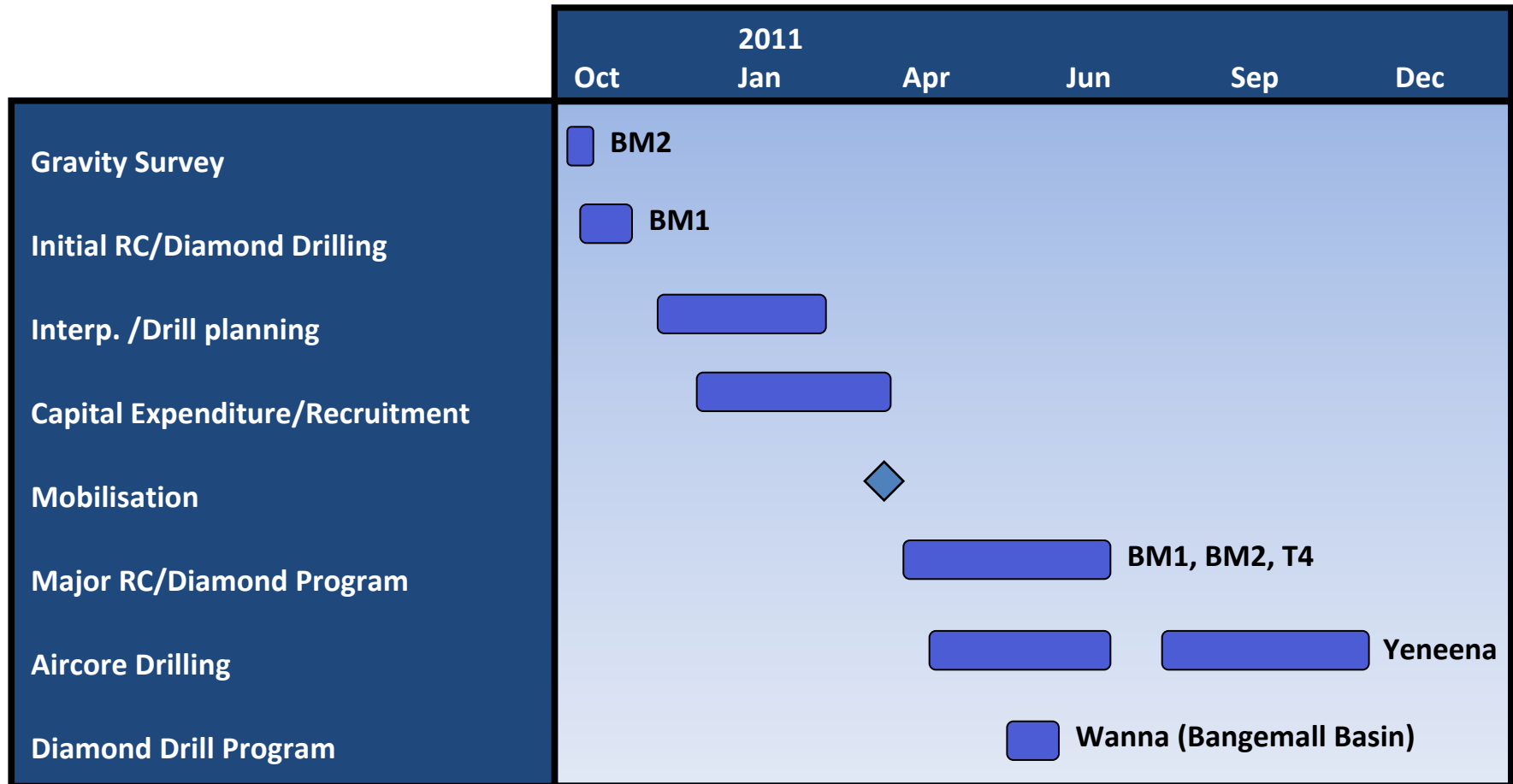
*The grade and continuity of the initial results at BM2 are similar to the early results obtained at BM1*

# The Next Steps

- Aircore assays pending from southern drill lines from BM1
- Gravity modeling at BM2
- Diamond drilling in progress
  - Three hole program to depths that will maximize the geological understanding of the copper system at depth
- Scaling up operations for major 2011 regional drill campaign and expanded program at the BM1 copper discovery

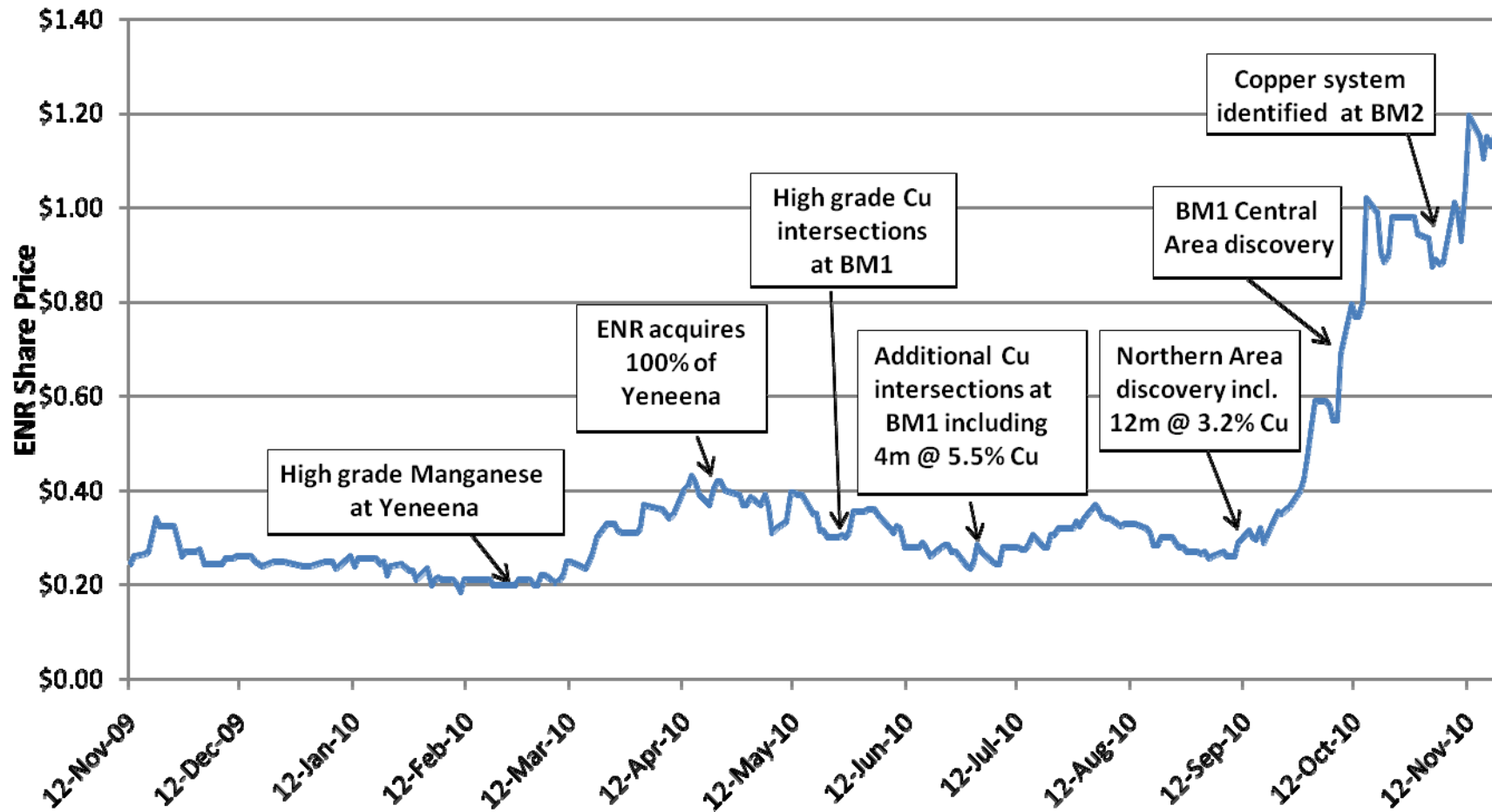


# Major 2011 Exploration Campaign



*The 2011 exploration program to be significantly expanded at the BM1 copper discovery and other prospects at the Yeneena project.*

# 2010 – The Emerging Yeneena Copper District



## 2011 Objectives

- ✓ Expand the exploration team and operational infrastructure for \$4-5m exploration campaign at Yeneena
  - Extensive deep drilling program (BM1, BM2)
  - Accelerate aircore regional target testing
- ✓ Diamond drill Wanna copper target in Bangemall Basin
- ✓ Advance manganese assets (commodity specific JV)
- ✓ Commercialise Yilgarn uranium resources
- ✓ Continue project generation



# Disclaimer & Compliance Statement

This presentation has been prepared by Encounter Resources Limited (“Encounter”). The information contained in this presentation is a professional opinion only and is given in good faith. Certain information in this document has been derived from third parties and though Encounter has no reason to believe that it is not accurate, reliable or complete, it has not been independently audited or verified by Encounter.

Any forward-looking statements included in this document involve subjective judgement and analysis and are subject to uncertainties, risks and contingencies, many of which are outside the control of, and maybe unknown to Encounter. In particular, they speak only as of the date of this document, they assume the success of Encounter’s strategies, and they are subject to significant regulatory, business, competitive and economic uncertainties and risks. Actual future events may vary materially from the forward looking statements and the assumptions on which the forward looking statements are based. Recipients of this document (“Recipients”) are cautioned to not place undue reliance on such forward-looking statements.

Encounter makes no representation or warranty as to the accuracy, reliability or completeness of information in this document and does not take responsibility for updating any information or correcting any error or omission which may become apparent after this document has been issued.

To the extent permitted by law, Encounter and its officers, employees, related bodies corporate and agents (“Agents”) disclaim all liability, direct, indirect or consequential (and whether or not arising out of the negligence, default or lack of care of Encounter and/or any of its Agents) for any loss or damage suffered by a Recipient or other persons arising out of, or in connection with, any use or reliance on this presentation or information.

The information in this report that relates to Exploration Results is based on information compiled by Mr. Peter Bewick who is a Member of the Australasian Institute of Mining and Metallurgy. Mr. Bewick is a full time employee of Encounter Resources Ltd and has sufficient experience which is relevant to the style of mineralisation under consideration to qualify as a Competent Person as defined in the 2004 Edition of the 'Australian Code for Reporting of Exploration Results, Mineral Resources and Ore Reserves'. Mr. Bewick consents to the inclusion in the presentation of the matters based on his information in the form and context in which it appears.