



encounter
RESOURCES LIMITED

ASX : ENR

Greenfields Copper Discovery in WA



Investor Update
Diggers and Dealers
Kalgoorlie - August 2012

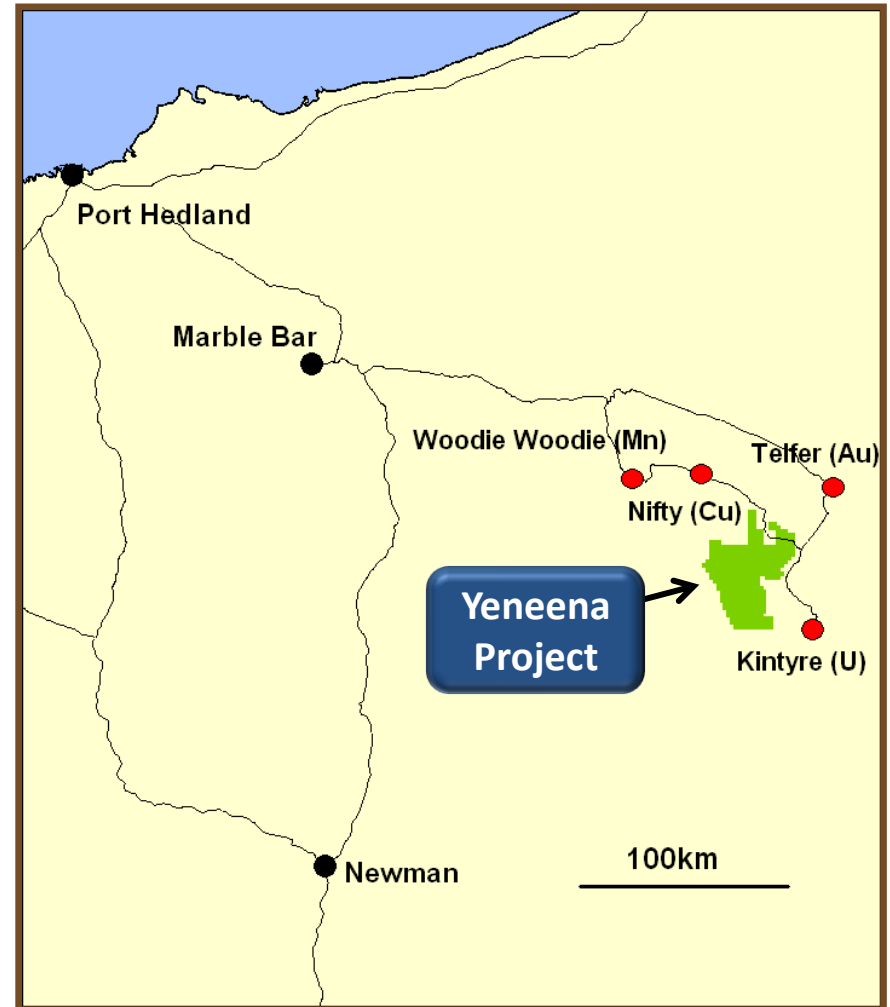


encounter
RESOURCES LIMITED



The Investment Opportunity

- Significant new copper discovery in WA
- Multiple prospects with mineralised intersections
- Major land position secured
- Experienced team of former WMC executives
- Sound cash position \$5m
- 25,000m drill program in 2012



Corporate Information

Board

Paul Chapman - Chairman
Will Robinson - Managing Director
Peter Bewick - Exploration Director
Jon Hronsky - Non-Executive Director
Kevin Hart / Dan Travers - Company Sec.

Issued Capital

114.2m Ordinary Shares
8.1m Employee Options

Market Cap.

A\$28.6m @ A\$0.25/share

Cash (30/6/12)

A\$5.2m

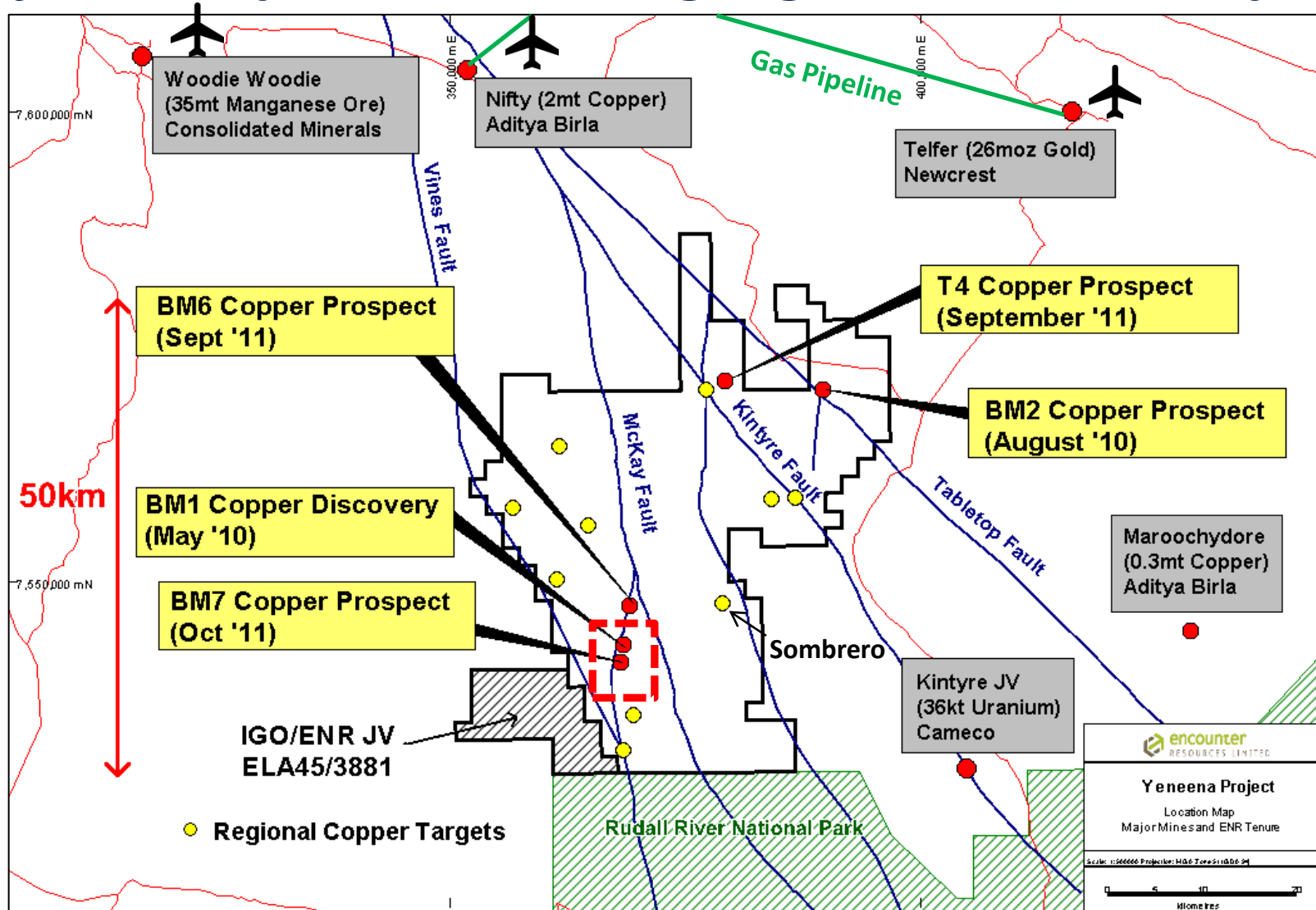


Sand cover has inhibited previous exploration



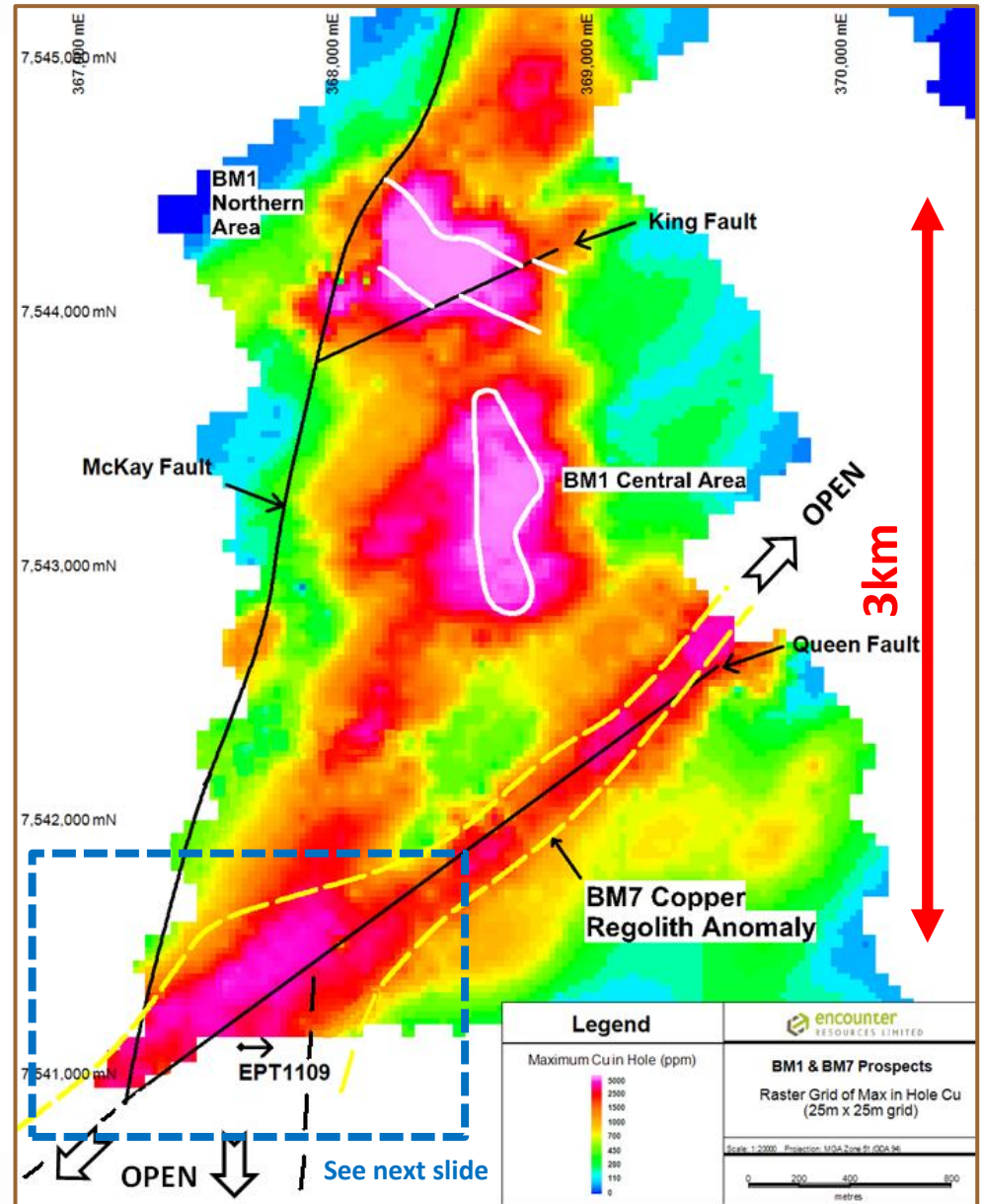
encounter
RESOURCES LIMITED

Major land position amongst giant mineral deposits

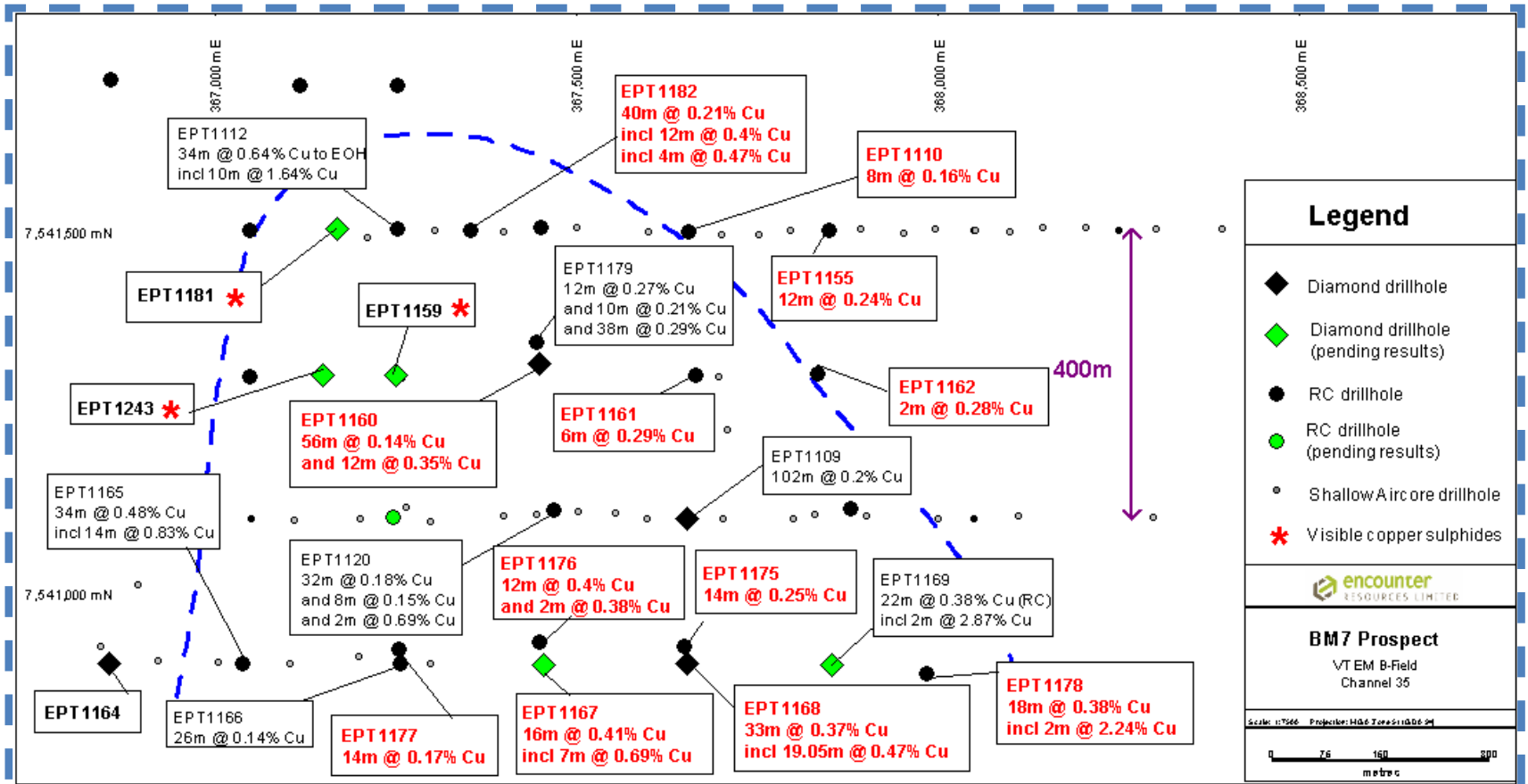


BM1 - BM7 Prospects

- Copper system +8km long and open
- **BM1** - coherent zones of near surface copper mineralisation
 - 10m @ 6.8% Cu from 32m
 - 20m @ 2.0% Cu from 22m
 - 8m @ 3.6% Cu from 18m
 - 4m @ 5.5% Cu from 66m
- **BM7** - New copper discovery 3km south of BM1

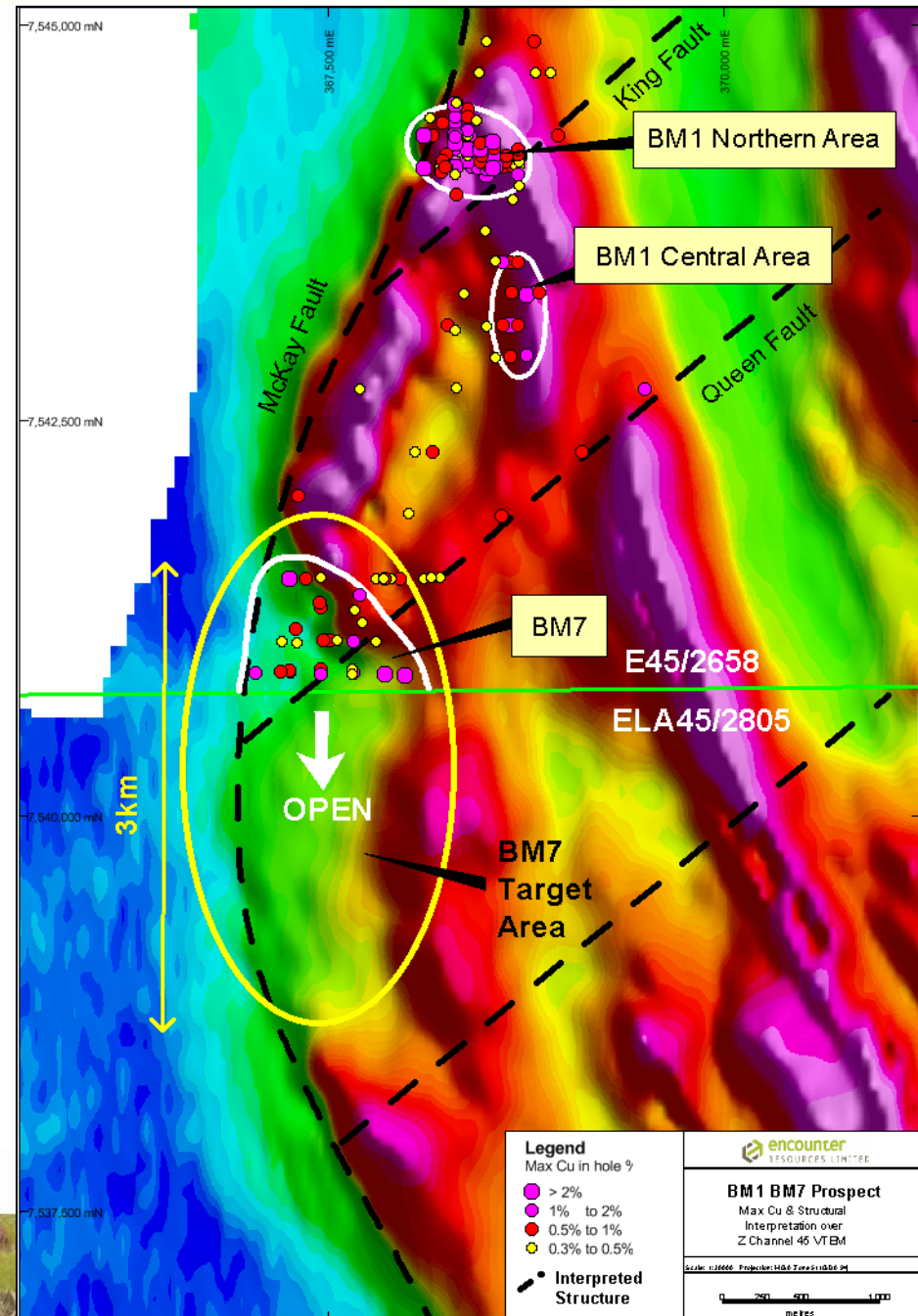


BM7 Prospect – New discovery and growing

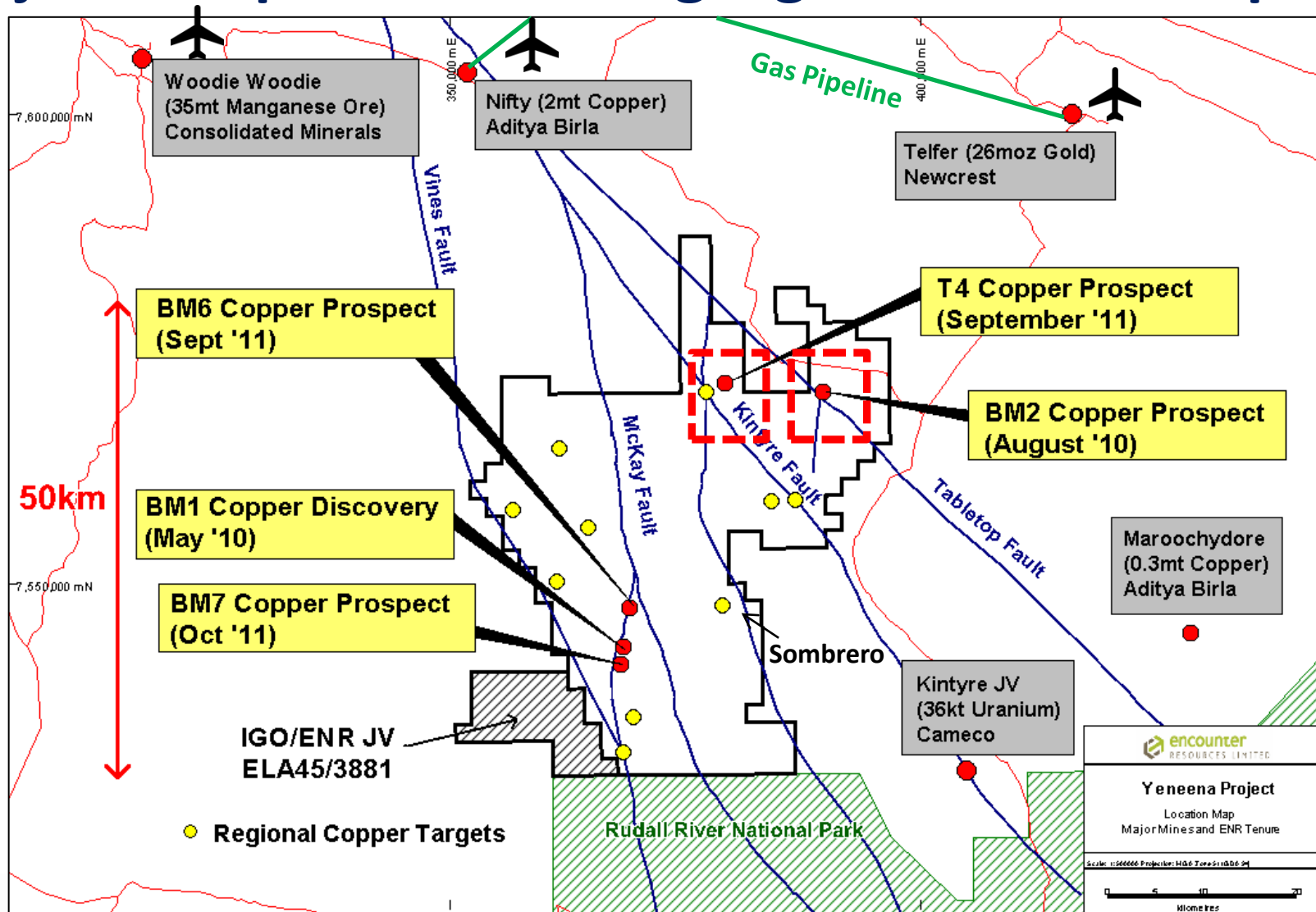


BM7 Prospect

- New copper discovery located 3km south of the BM1 discovery.
 - 34m @ 0.6% Cu incl. 10m @ 1.6% Cu
 - 22m @ 0.4% Cu incl. 2m @ 2.9% Cu
 - 34m @ 0.5% Cu incl. 14m @ 0.8% Cu
 - 33m @ 0.4% Cu incl. 19m @ 0.5% Cu
 - 16m @ 0.4% Cu incl. 7m @ 0.7% Cu
- Mineral system widens and is strengthening to the south
- 3km long target zone coincident with a major flexure in the McKay Fault
- Hallmarks of major mineral system

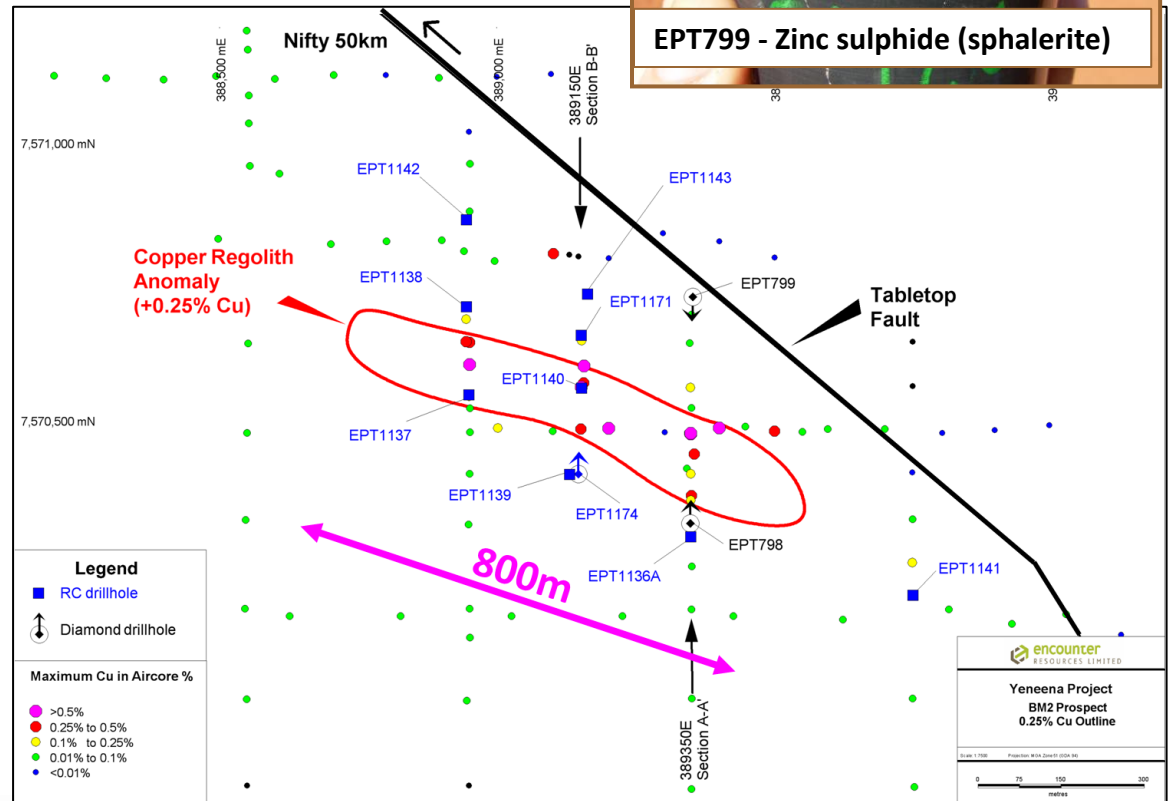


Major land position amongst giant mineral deposits

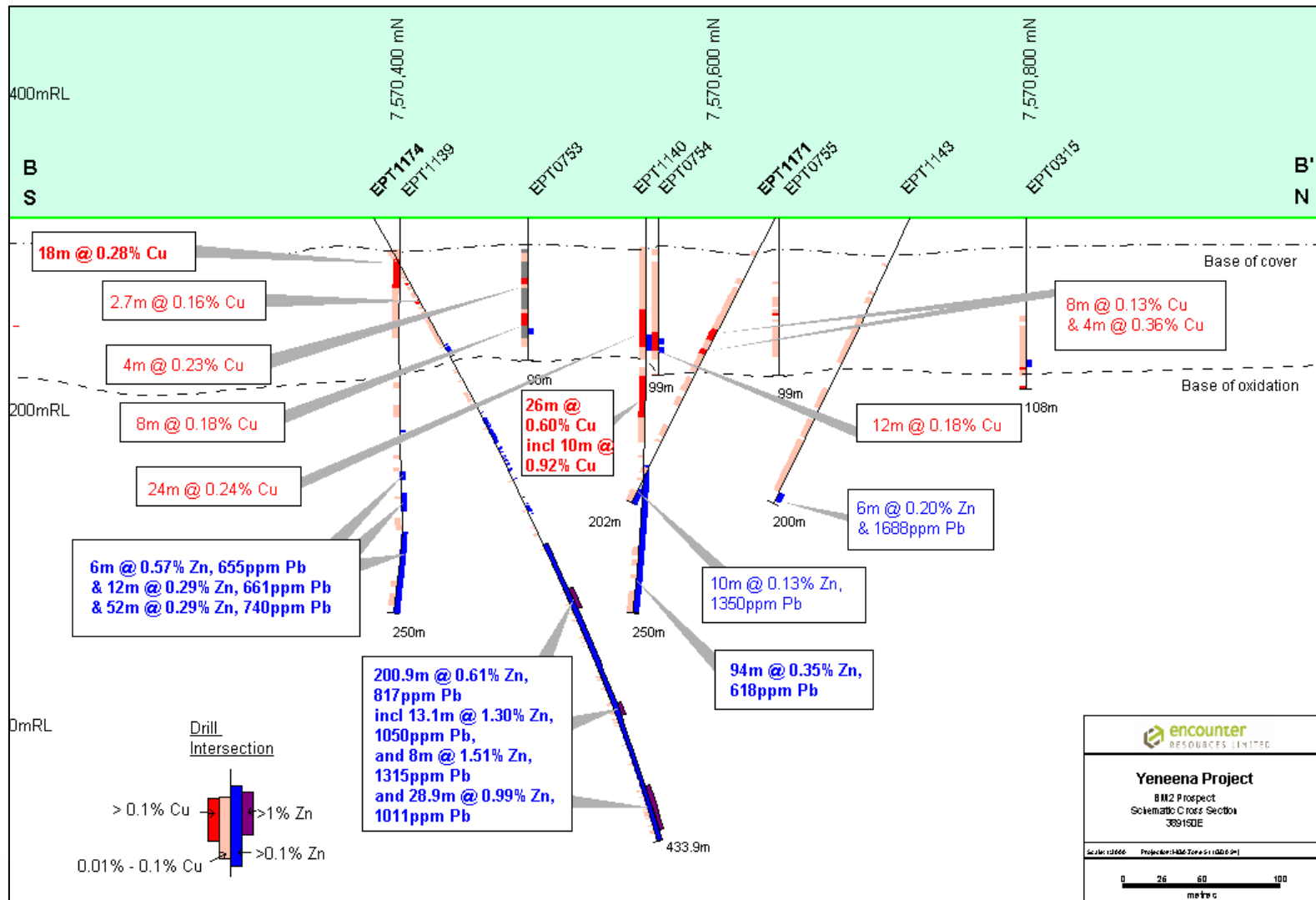


BM2 Base Metal Prospect

- 800m long +0.25% copper regolith anomaly
- WA Govt. co-funded drilling program completed in April
 - 26m @ 0.60% Cu from 100m
 - 201m @ 0.61% Zn from 233m to end of hole
- Mineralisation remains open to the west and at depth
- Modelled EM conductor down dip west of copper sulphide mineralisation



BM2 Copper Zinc Prospect



Yeneena Project – T4 prospect



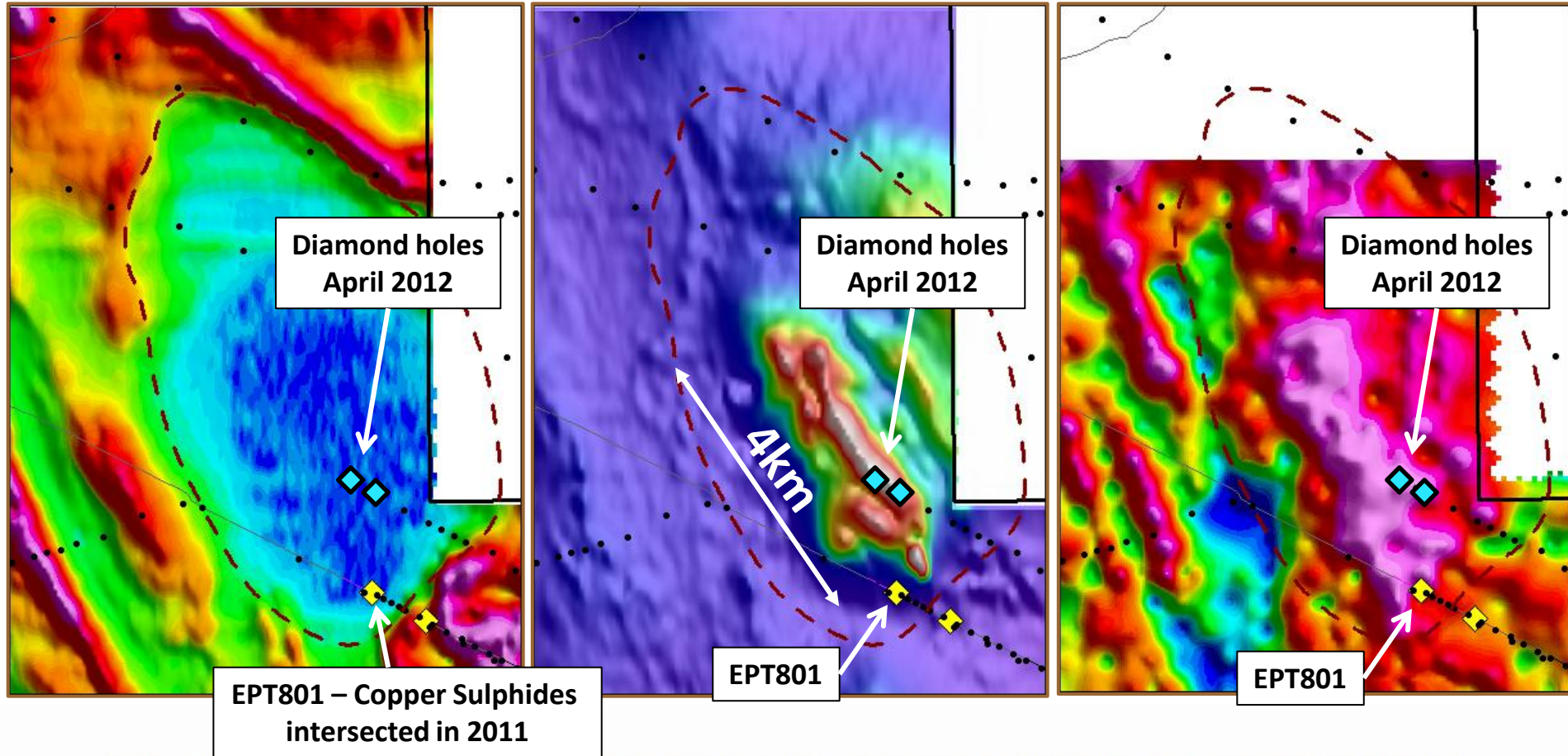
encounter
RESOURCES LIMITED

T4 – Major Copper Prospect

Electromagnetics

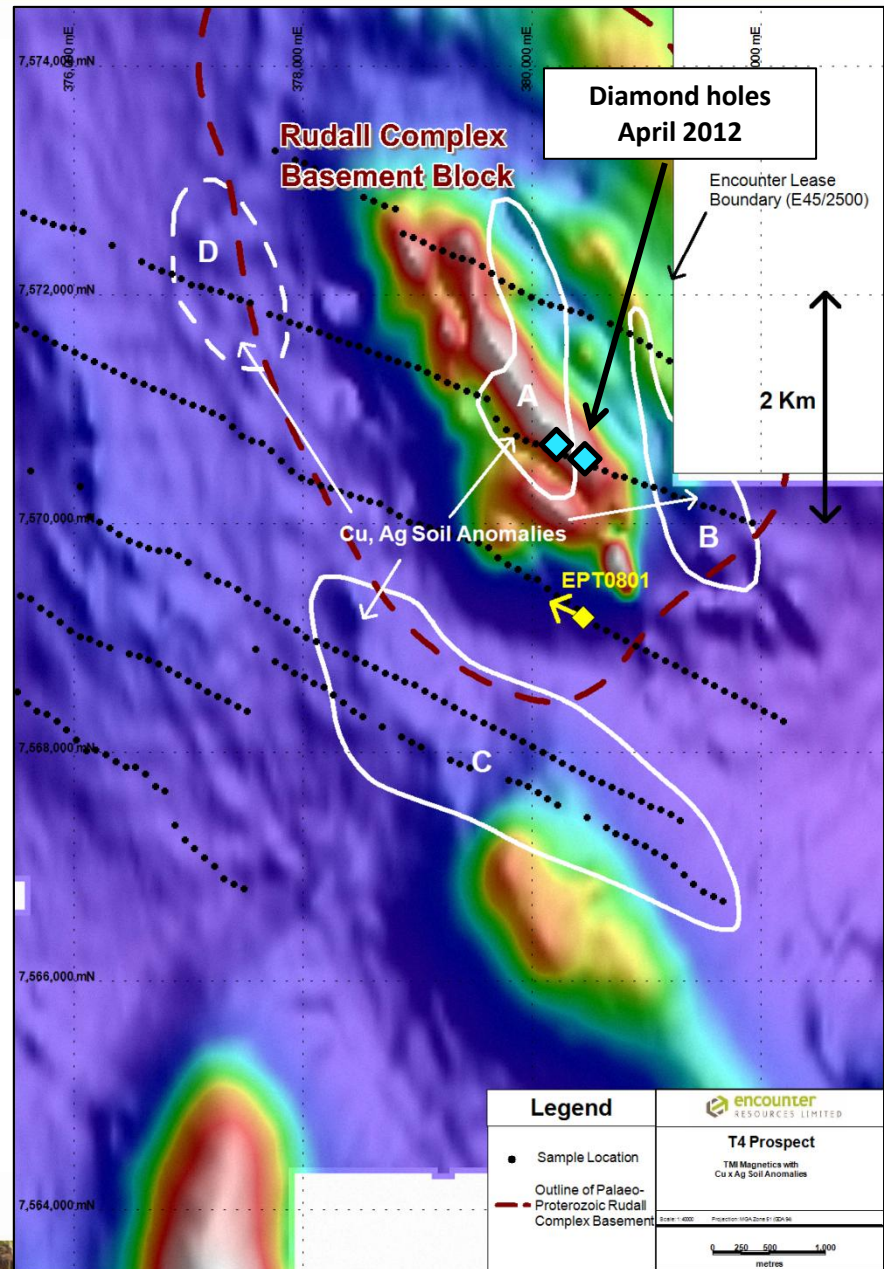
Magnetics

Gravity



T4 - Diamond Drilling

- Stratigraphic hole EPT 801 intersected disseminated copper sulphides including 0.9m @ 0.84% Cu
- Drilling located at the southern end of a +4km long gravity & magnetic anomaly
- Surface geochemistry highlights copper silver anomalies at key structural targets
- Two diamond holes completed in April with assays due August 2012
- 10,000 aircore program in progress



Yeneena Copper Discovery Timeline



2008-09

Airborne EM
Regional geochem
Target generation

2010

Greenfields
copper oxide
discoveries at
BM1 & BM2



2011

Discovery of copper
sulphides at BM1 & T4

New copper oxide
discoveries at BM6 &
BM7

Primary zinc discovered
at BM2

BM7 copper sulphides

2012 Objectives

Large scale, high grade
copper sulphide discovery
at BM1, BM7

Drill testing of large scale
T4 copper prospect

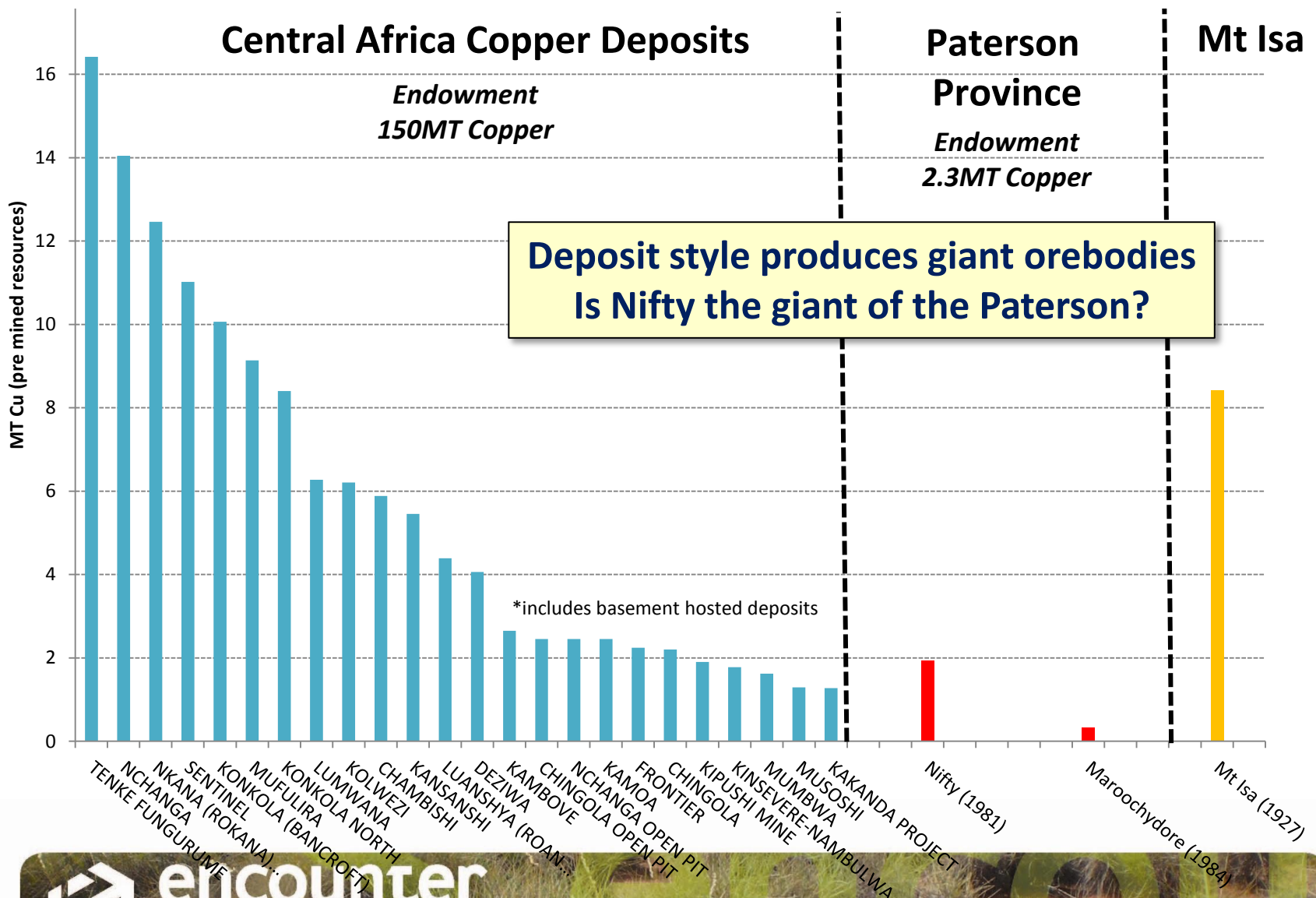
Follow up base metal
discovery at BM2

Regional target testing



encounter
RESOURCES LIMITED

Sediment Hosted Copper Deposits



Yeneena Copper Discovery

- Encounter has made a series of new copper discoveries that demonstrate the potential of the area for large tonnage copper deposits
- Early stage indications of a potential new copper province
 - High drilling success rate
 - Large mineralisation footprints
 - Thick, high grade intersections
- Land position secured (1400km², 100% owned)
- Well funded explorer with 25,000m drill program in 2012

Disclaimer & Compliance Statement

This presentation has been prepared by Encounter Resources Limited (“Encounter”). The information contained in this presentation is a professional opinion only and is given in good faith. Certain information in this document has been derived from third parties and though Encounter has no reason to believe that it is not accurate, reliable or complete, it has not been independently audited or verified by Encounter.

Any forward-looking statements included in this document involve subjective judgement and analysis and are subject to uncertainties, risks and contingencies, many of which are outside the control of, and maybe unknown to Encounter. In particular, they speak only as of the date of this document, they assume the success of Encounter’s strategies, and they are subject to significant regulatory, business, competitive and economic uncertainties and risks. Actual future events may vary materially from the forward looking statements and the assumptions on which the forward looking statements are based. Recipients of this document (“Recipients”) are cautioned to not place undue reliance on such forward-looking statements.

Encounter makes no representation or warranty as to the accuracy, reliability or completeness of information in this document and does not take responsibility for updating any information or correcting any error or omission which may become apparent after this document has been issued.

To the extent permitted by law, Encounter and its officers, employees, related bodies corporate and agents (“Agents”) disclaim all liability, direct, indirect or consequential (and whether or not arising out of the negligence, default or lack of care of Encounter and/or any of its Agents) for any loss or damage suffered by a Recipient or other persons arising out of, or in connection with, any use or reliance on this presentation or information.

The information in this report that relates to Exploration Results is based on information compiled by Mr. Peter Bewick who is a Member of the Australasian Institute of Mining and Metallurgy. Mr. Bewick is a full time employee of Encounter Resources Ltd and has sufficient experience which is relevant to the style of mineralisation under consideration to qualify as a Competent Person as defined in the 2004 Edition of the 'Australian Code for Reporting of Exploration Results, Mineral Resources and Ore Reserves'. Mr. Bewick consents to the inclusion in the presentation of the matters based on his information in the form and context in which it appears.