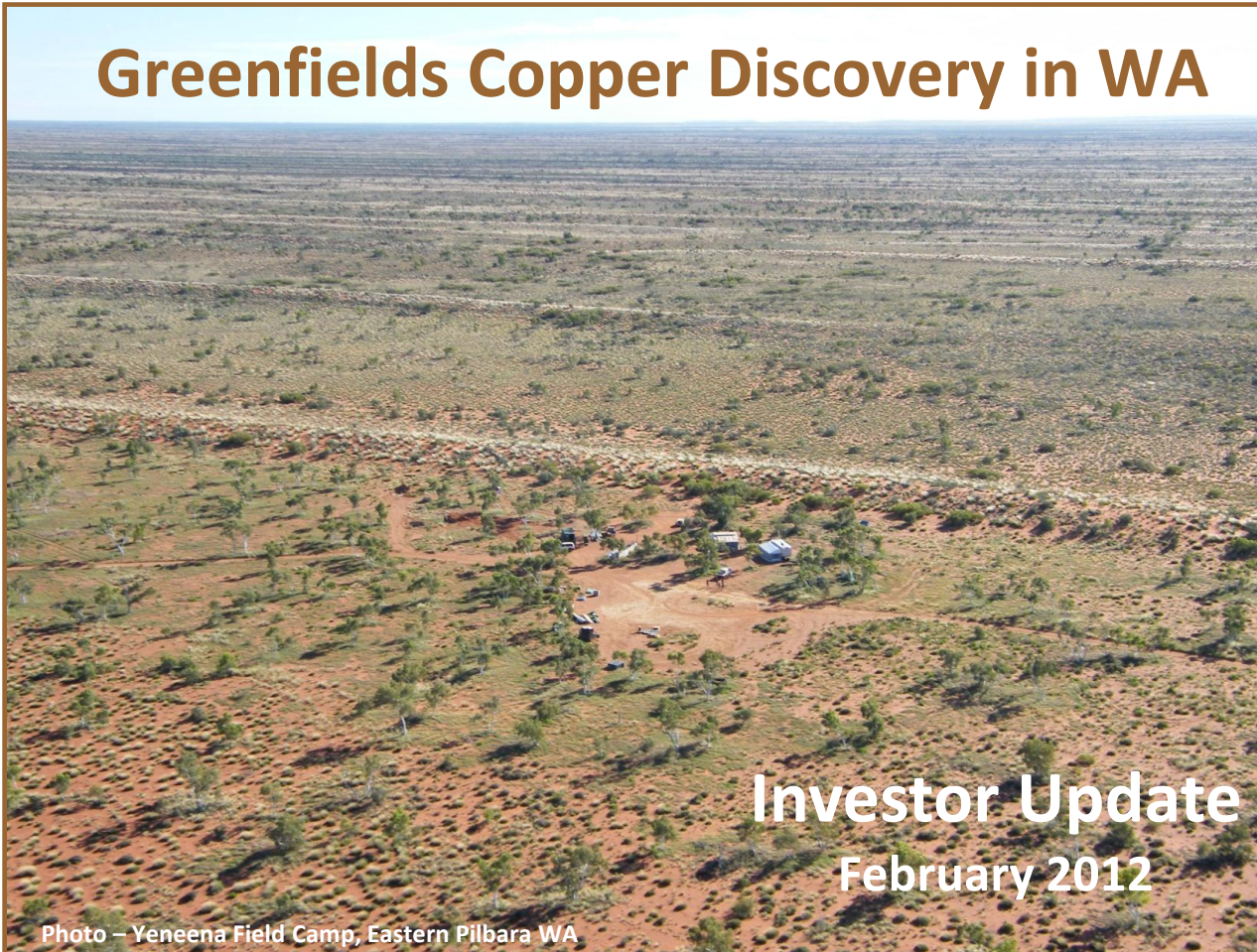


Greenfields Copper Discovery in WA



Corporate Information

Board

Paul Chapman - Chairman
Will Robinson - Managing Director
Peter Bewick - Exploration Director
Jon Hronsky - Non-Executive Director
Kevin Hart / Dan Travers - Company Sec.

Issued Capital:

99.3m Ordinary Shares
7.5m Employee Options

Market Cap:

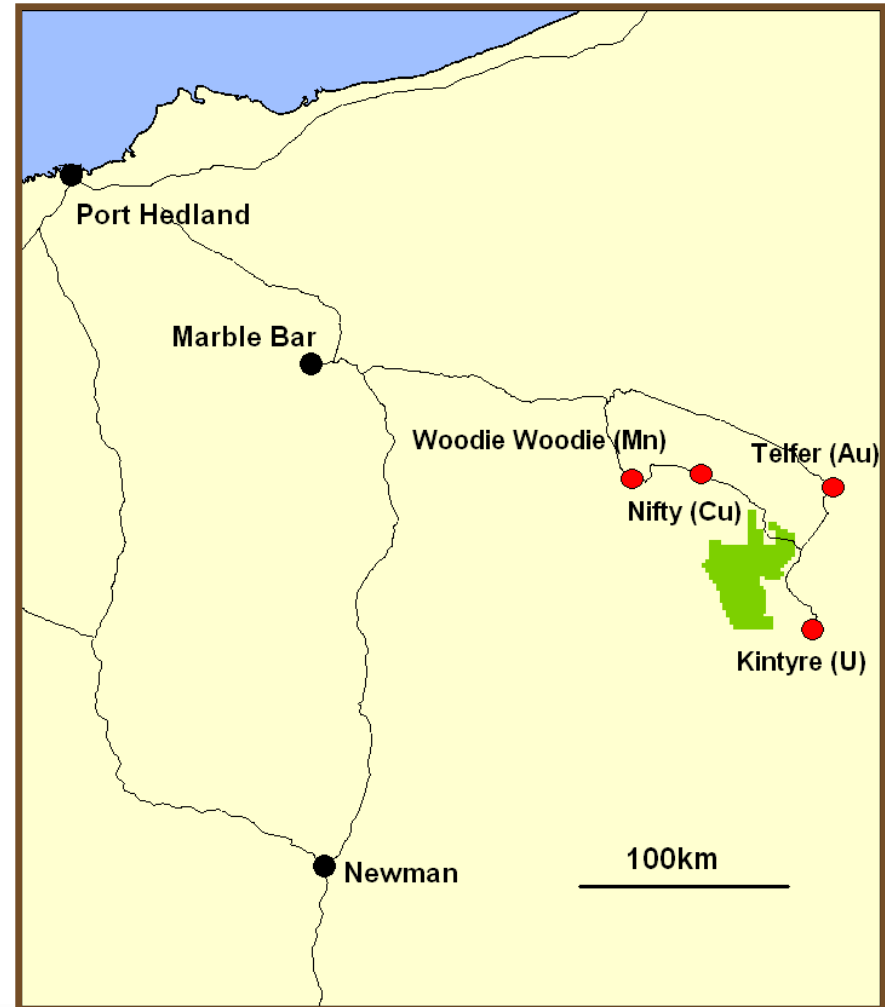
\$39.7m @ \$0.40/share

Cash (31/12/11):

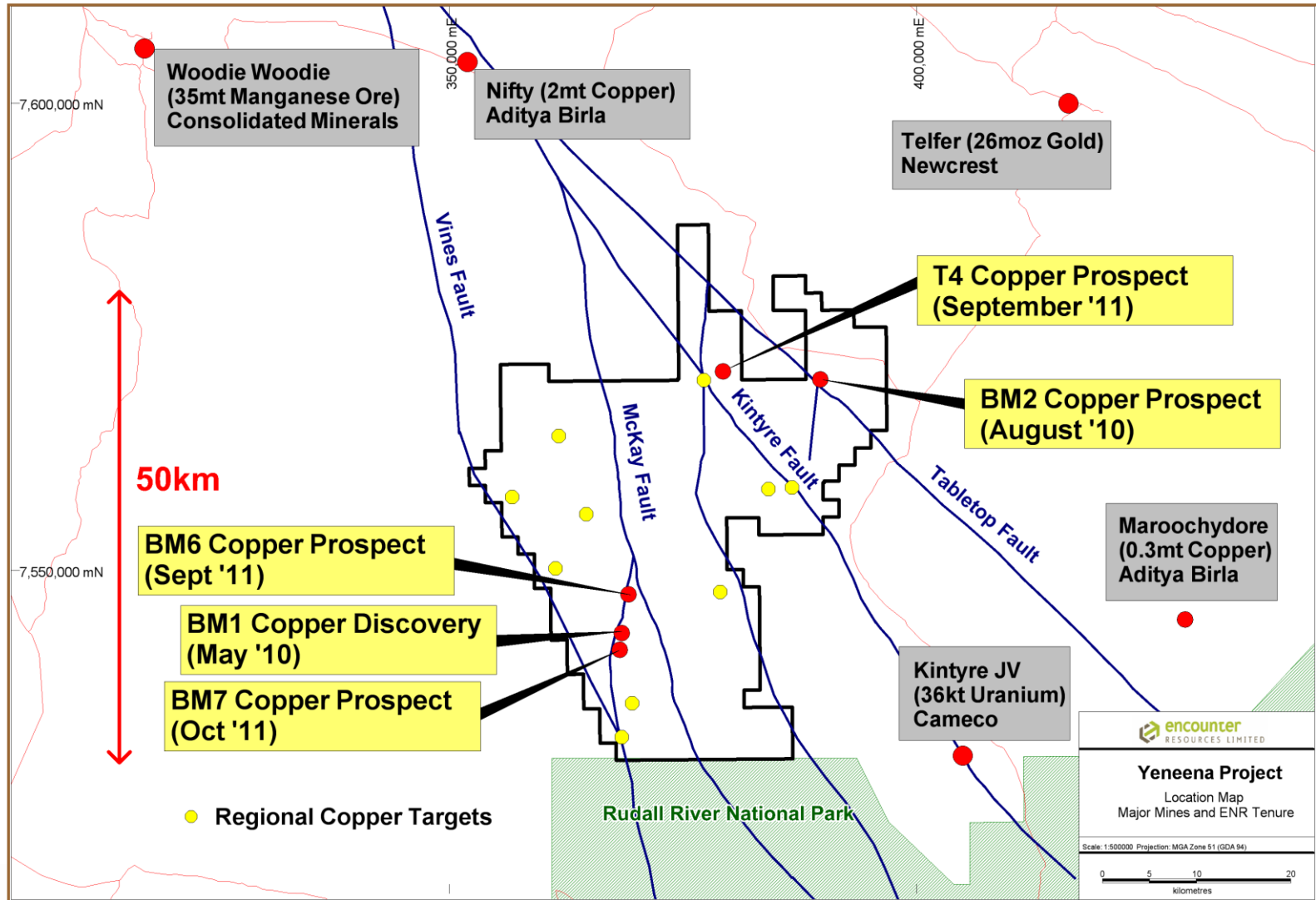
\$3m (plus capital raising)

Yeneena Project – Paterson Province (WA)

- Major land position in highly endowed mineral belt
- 100% ownership (1300 km²)
- Good infrastructure
- Only three diamond holes drilled prior to Encounter
- Sulphide mineralisation intersected at four copper prospects in 2011



Major land position amongst giant mineral deposits



Milestones in 2011 ...

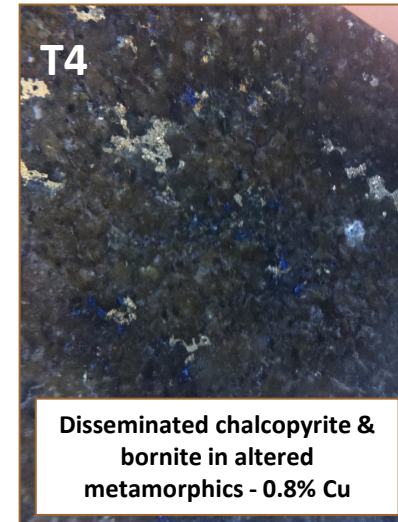
June



July



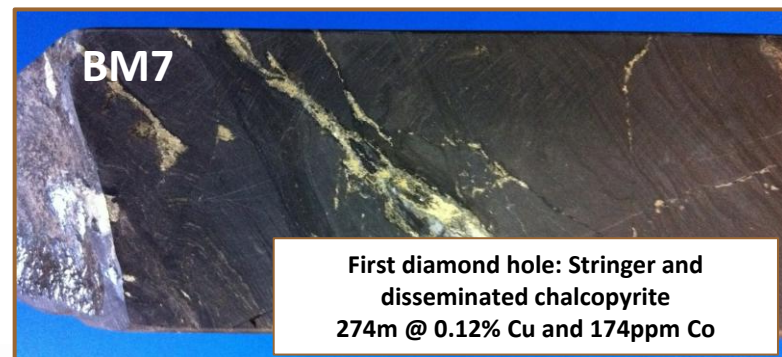
August



October

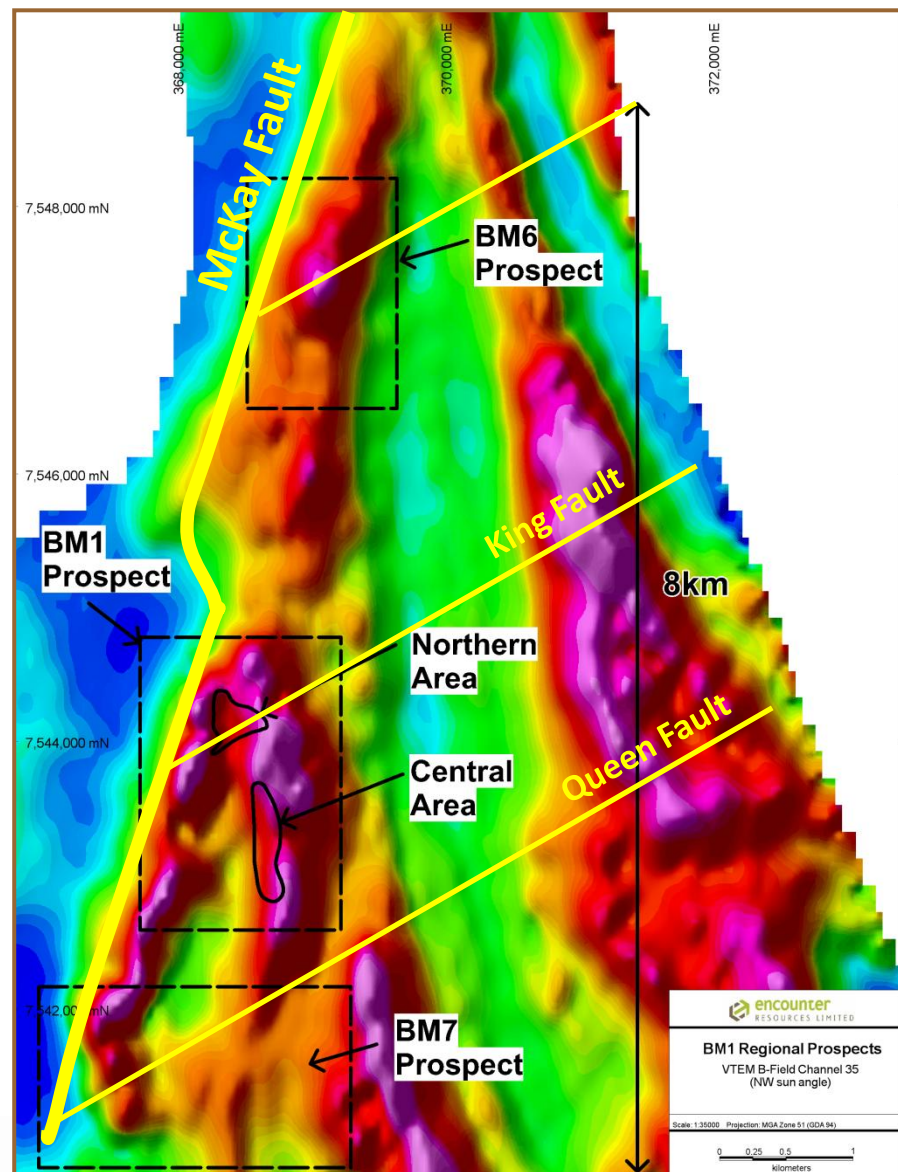


December

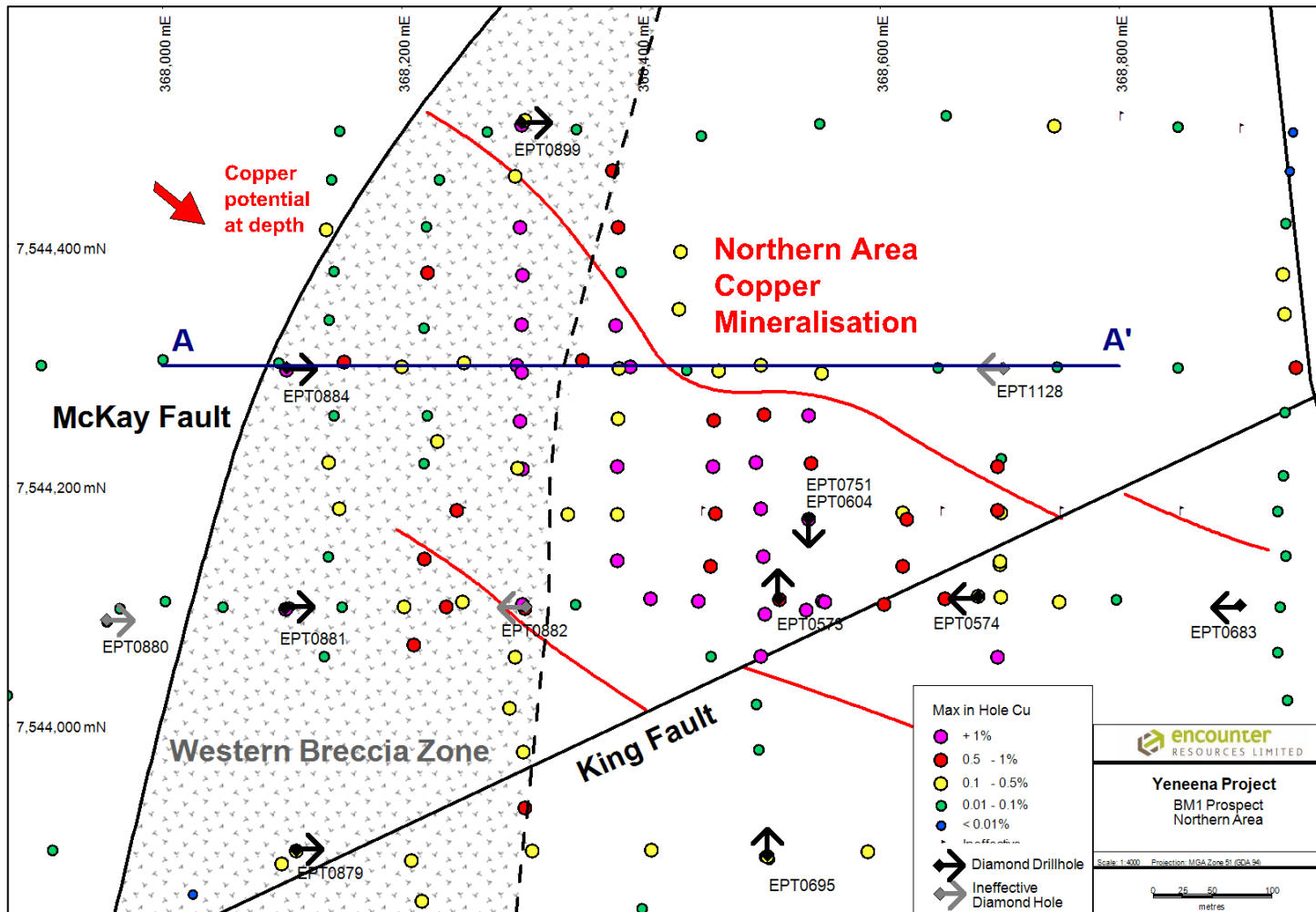


BM1 Copper Discovery

- Multiple thick, near surface copper oxide intersections grading over 1% Cu
- Copper system +8km long and open
- BM1 Northern Area - coherent zones of near surface copper mineralisation
 - 10m @ 6.8% Cu from 32m (incl. 3m @ 12.3% Cu)
 - 20m @ 2.0% Cu from 22m (incl. 12m @ 3.2% Cu)
 - 12m @ 1.5% Cu from 16m (incl. 2m @ 2.7% Cu)
 - 8m @ 3.6% Cu from 18m (incl. 2m @ 7.6% Cu)
 - 4m @ 5.5% Cu from 66m
- Highly anomalous cobalt and silver
14m @ 0.5% Co, 3m @ 156g/t silver
- Deep drilling to target high grade, primary copper sulphide mineralisation

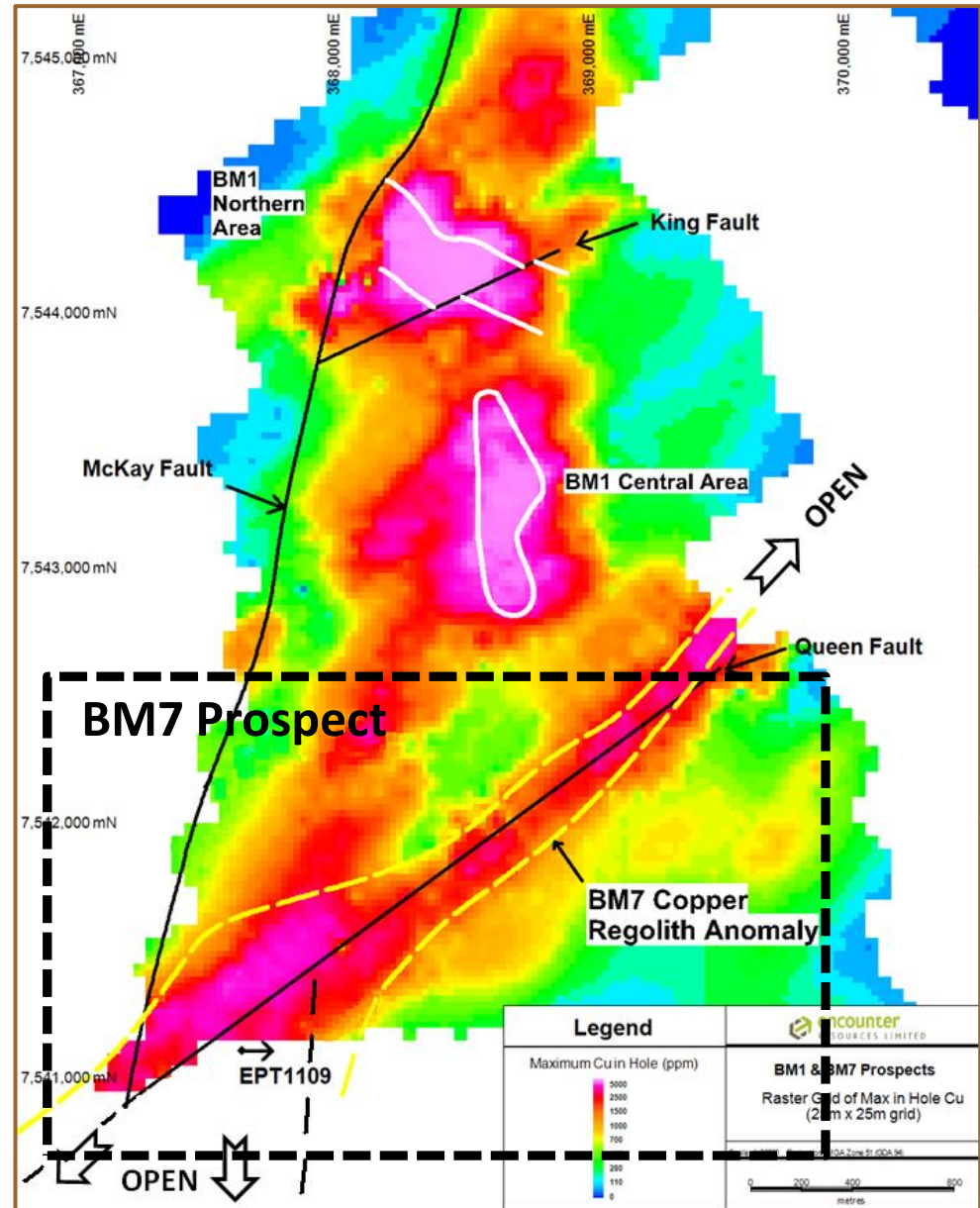


BM1 Copper Discovery – Northern Area

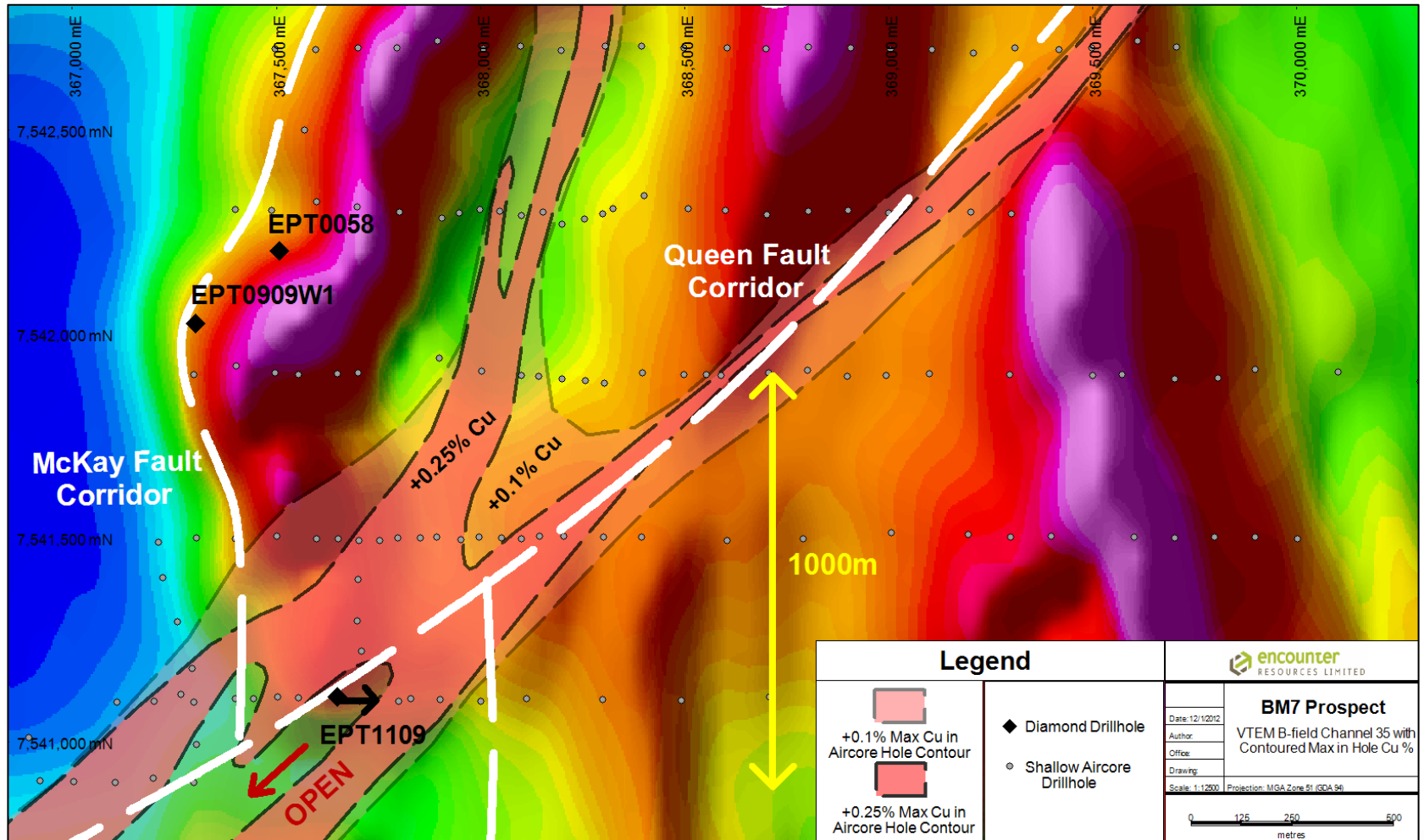


BM7 Prospect

- Major new copper regolith anomaly
- Extending over 3.5km along key regional north-east trending structure (the Queen Fault)
- First diamond drill hole
 - **274m @ 0.12% copper and 174ppm cobalt**
 - Alteration and mineralisation interpreted as marginal to a major sediment-hosted copper deposit.

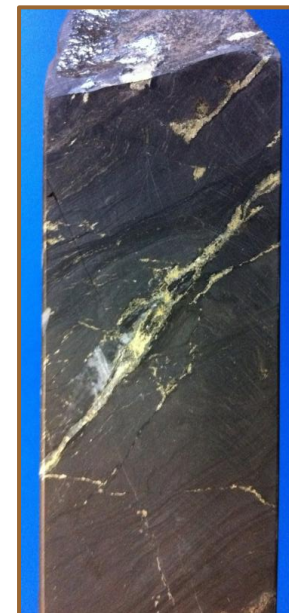
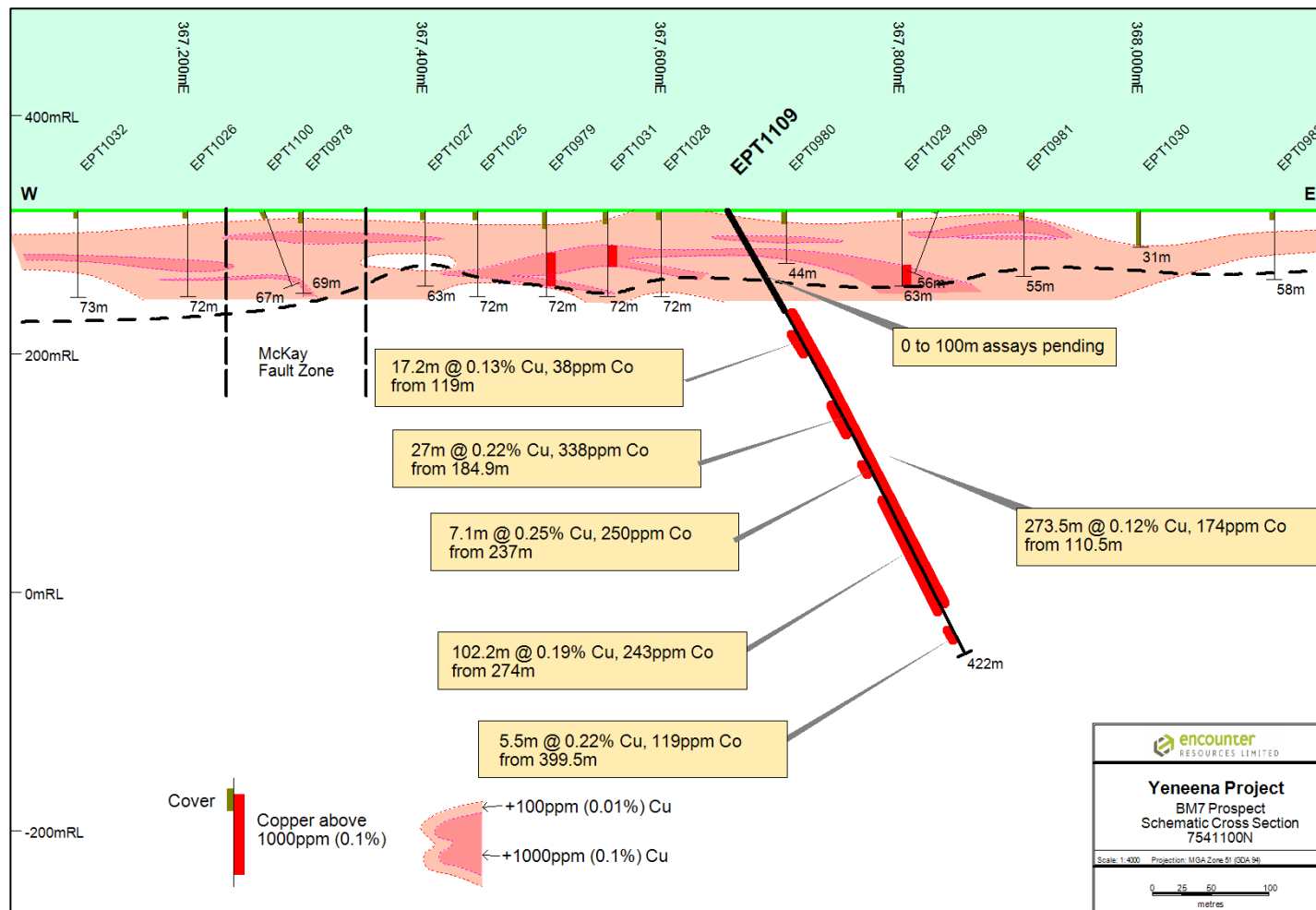


BM7 Prospect



BM7 Prospect – First Diamond Hole

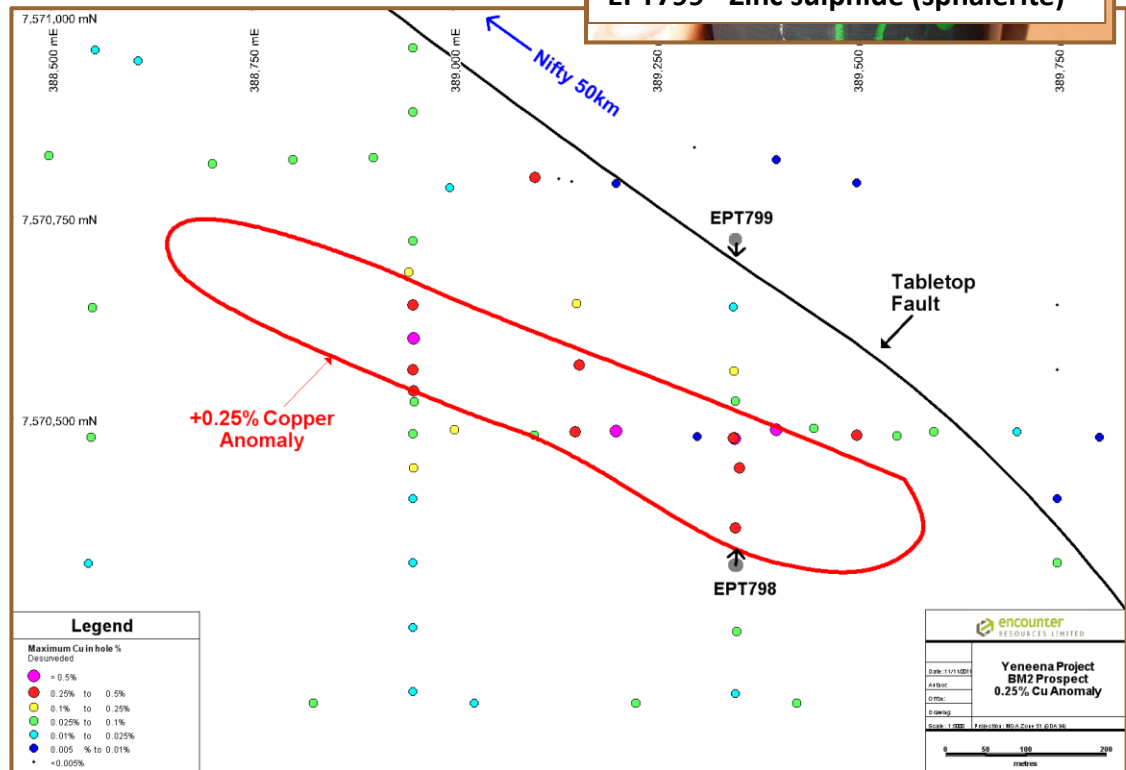
274m zone containing Cu sulphides from trace levels to pervasive disseminations



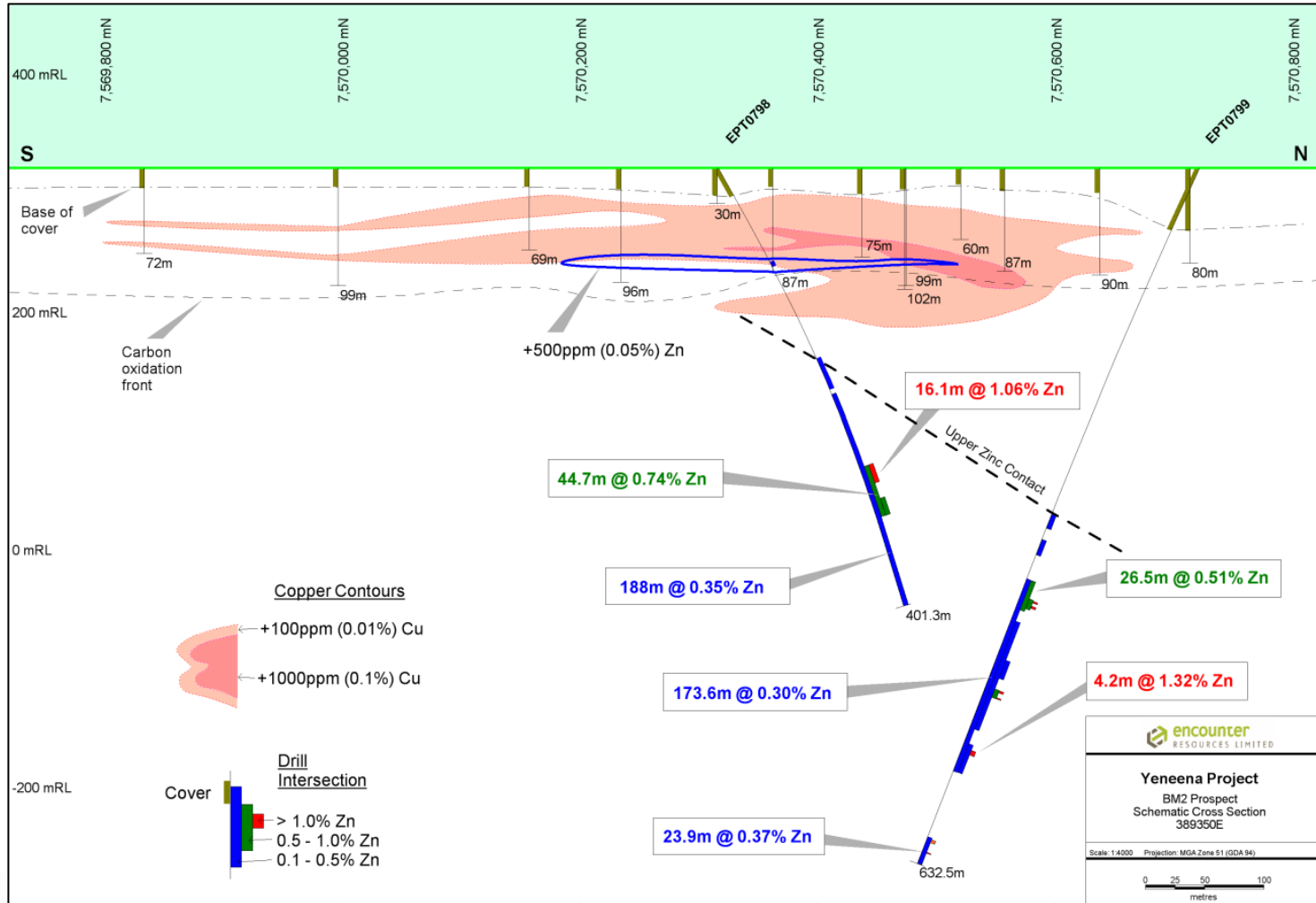
EPT1109 Stringer and disseminated chalcopyrite (305m)

BM2 Base Metal Prospect

- First diamond hole
 - **188m @ 0.35% zinc** from 213m to end of hole incl. **45m @ 0.74% zinc**
- 800m long +0.25% copper regolith anomaly remains unexplained
- WA Govt. co-funded drilling grant \$150,000
- Drilling planned to recommence in March 2012



BM2 Base Metal Prospect

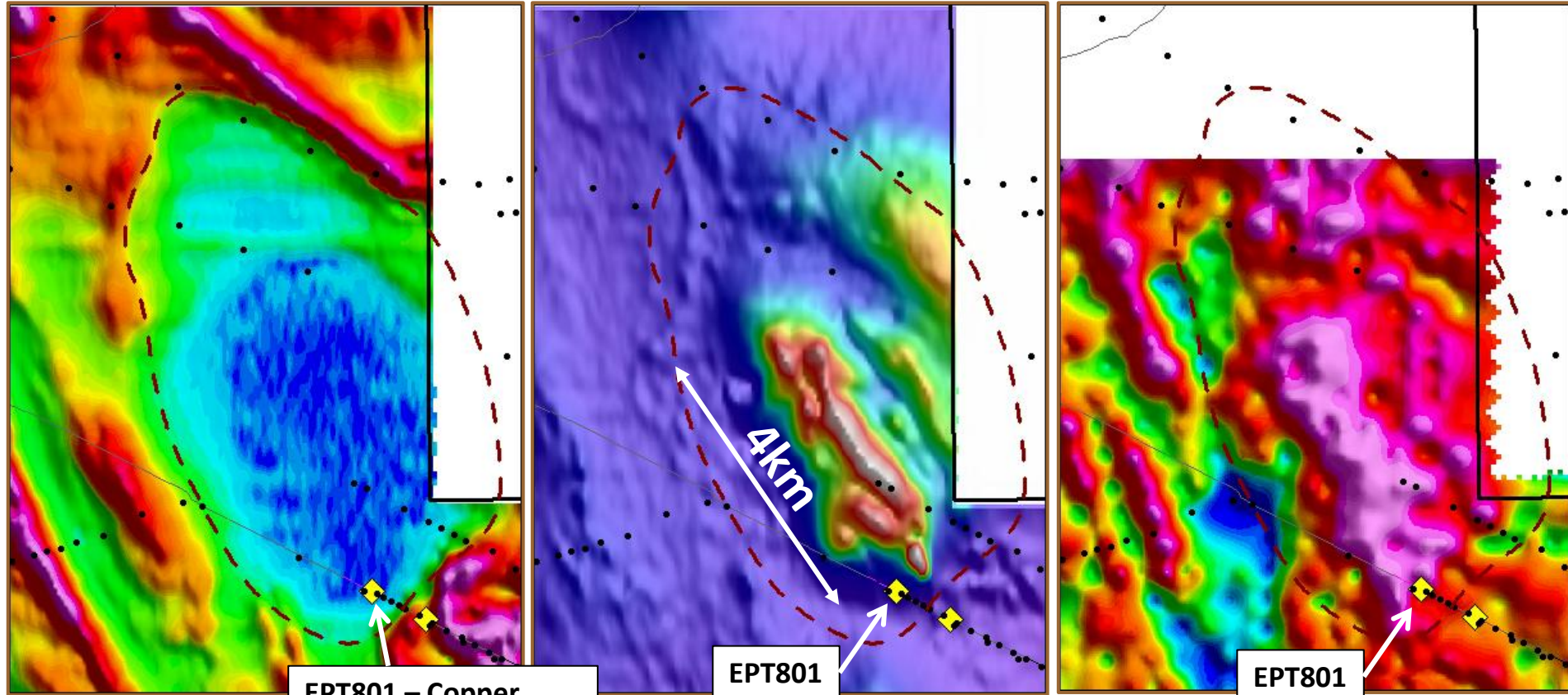


T4 – Major Copper Prospect

Electromagnetics

Magnetics

Gravity



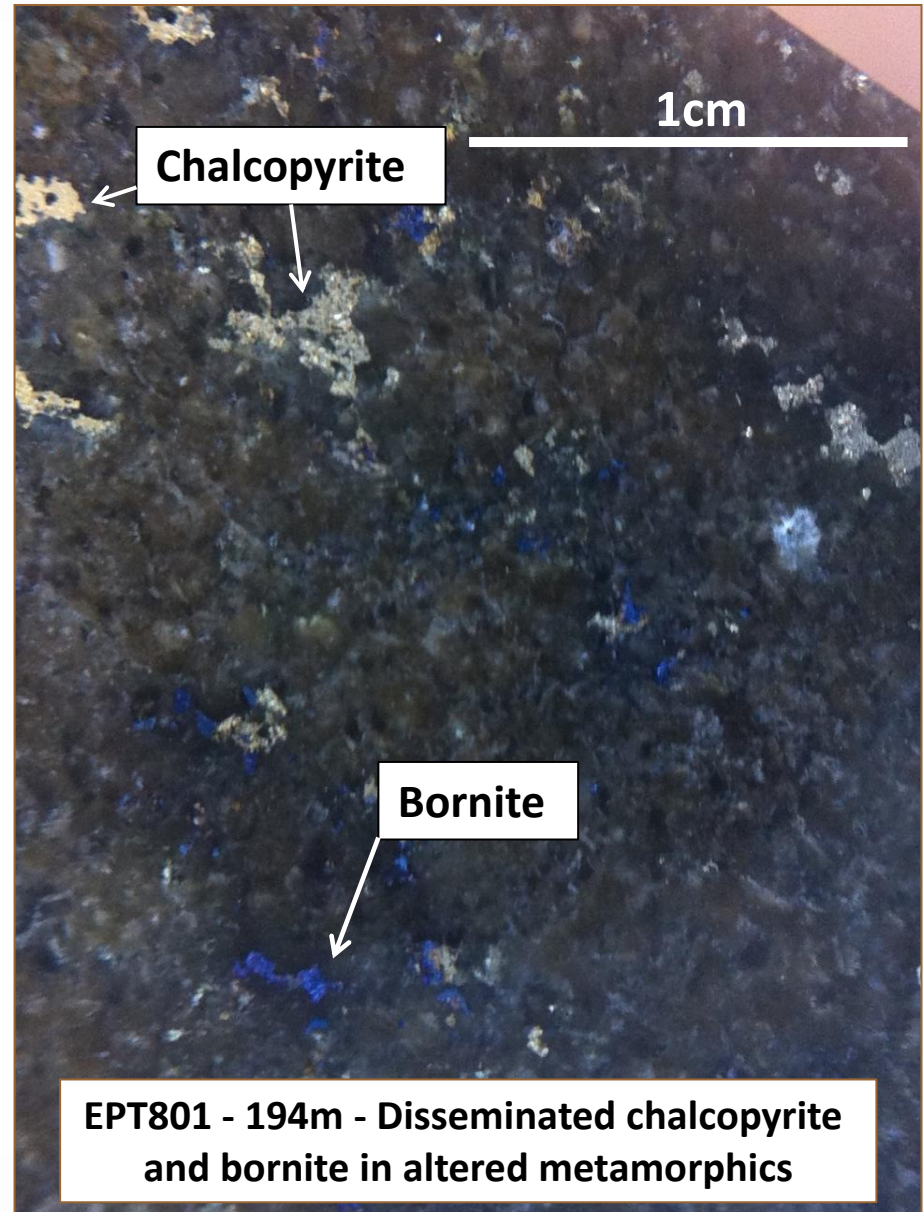
EPT801 – Copper Sulphides Intersected

EPT801

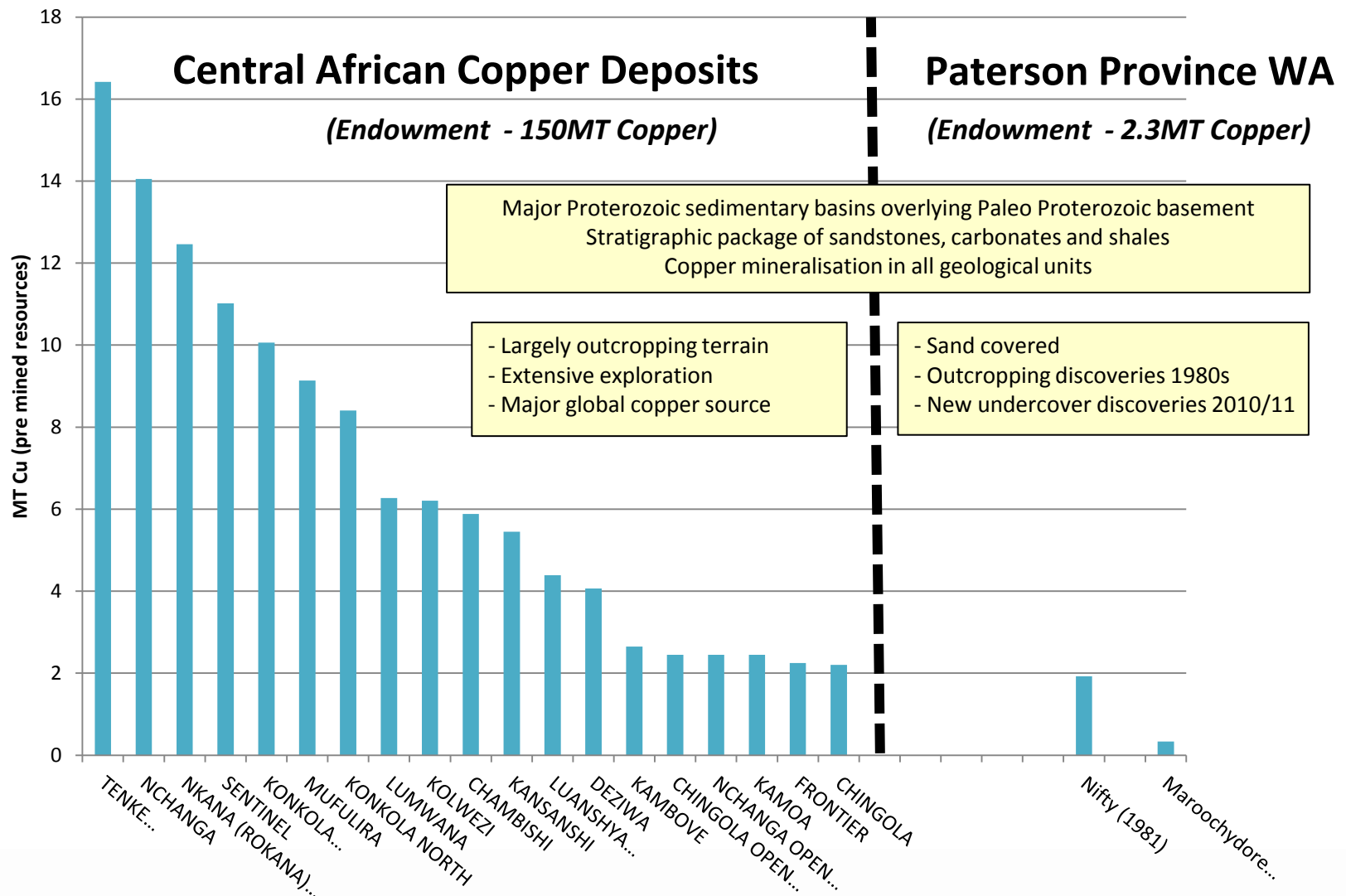
EPT801

T4 - Diamond Drilling

- Stratigraphic hole intersected disseminated copper sulphides including 0.9m @ 0.84% Cu
- Drilling located at the southern end of a +4km long gravity & magnetic anomaly
- New style of copper mineralisation in an unexplored region
- Surface geochemistry highlights copper silver anomalies at key structural targets



Paterson Province...a sand covered African Cu Belt?



Yeneena Copper Discovery Timeline



2008-09

Airborne EM
Regional geochem
Target generation

2010

Greenfields
copper oxide
discoveries at
BM1 & BM2



2011

Discovery of copper
sulphides at BM1 & T4
New copper oxide
discoveries at BM6 &
BM7
Primary zinc discovered
at BM2
BM7 copper sulphides

2012 Objectives

Large scale, high grade
copper sulphide discovery
at BM1, BM7
Drill testing of large scale
T4 copper prospect
Follow up base metal
discovery at BM2
Regional target testing



encounter
RESOURCES LIMITED

Yeneena Copper Discovery

- New greenfields copper discovery made in 2010
- Base metal sulphides discovered at four prospects in 2011
- Early stage indications of a potential new copper province
 - High drilling success rate
 - Large mineralisation footprints
 - Thick, high grade intersections
- Land position secured (1300km² , 100% owned)

Disclaimer & Compliance Statement

This presentation has been prepared by Encounter Resources Limited (“Encounter”). The information contained in this presentation is a professional opinion only and is given in good faith. Certain information in this document has been derived from third parties and though Encounter has no reason to believe that it is not accurate, reliable or complete, it has not been independently audited or verified by Encounter.

Any forward-looking statements included in this document involve subjective judgement and analysis and are subject to uncertainties, risks and contingencies, many of which are outside the control of, and maybe unknown to Encounter. In particular, they speak only as of the date of this document, they assume the success of Encounter’s strategies, and they are subject to significant regulatory, business, competitive and economic uncertainties and risks. Actual future events may vary materially from the forward looking statements and the assumptions on which the forward looking statements are based. Recipients of this document (“Recipients”) are cautioned to not place undue reliance on such forward-looking statements.

Encounter makes no representation or warranty as to the accuracy, reliability or completeness of information in this document and does not take responsibility for updating any information or correcting any error or omission which may become apparent after this document has been issued.

To the extent permitted by law, Encounter and its officers, employees, related bodies corporate and agents (“Agents”) disclaim all liability, direct, indirect or consequential (and whether or not arising out of the negligence, default or lack of care of Encounter and/or any of its Agents) for any loss or damage suffered by a Recipient or other persons arising out of, or in connection with, any use or reliance on this presentation or information.

The information in this report that relates to Exploration Results is based on information compiled by Mr. Peter Bewick who is a Member of the Australasian Institute of Mining and Metallurgy. Mr. Bewick is a full time employee of Encounter Resources Ltd and has sufficient experience which is relevant to the style of mineralisation under consideration to qualify as a Competent Person as defined in the 2004 Edition of the 'Australian Code for Reporting of Exploration Results, Mineral Resources and Ore Reserves'. Mr. Bewick consents to the inclusion in the presentation of the matters based on his information in the form and context in which it appears.