

**ASX : ENR**

19 March 2012

Company Announcements Office  
Australian Securities Exchange  
4th Floor, 20 Bridge Street  
Sydney NSW 2000

## Investor Presentation

### Hong Kong, New York, Brisbane

---

The company is pleased to provide a copy of the presentation to be given at the following conferences:

Mines and Money 2012 Conference	Hong Kong	21-22 March 2012
Casimir Capital 2 <sup>nd</sup> Annual Australian Mining Conference	New York	26 March 2012
Australian Copper Conference	Brisbane	27-28 March 2012

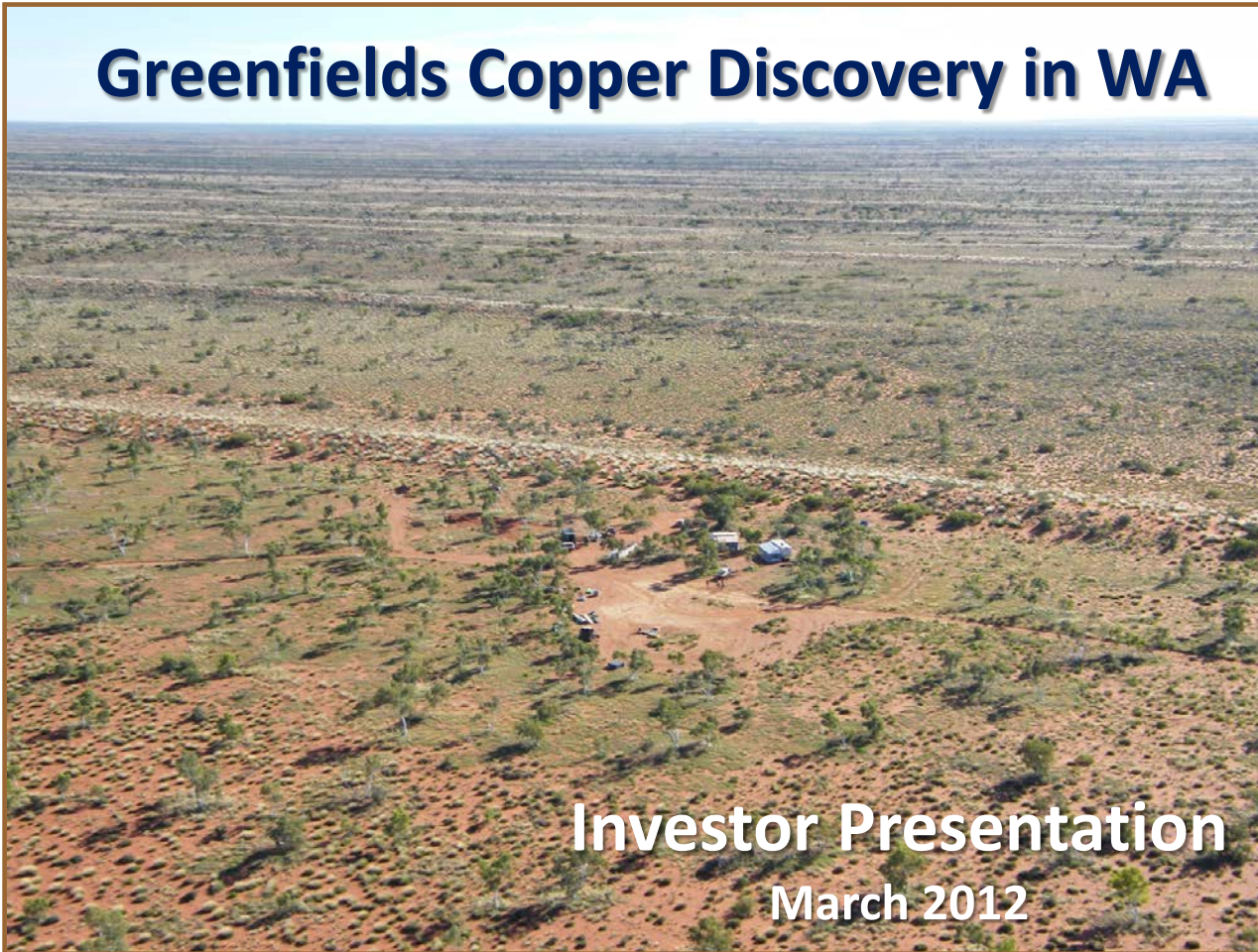
For further information please contact:  
Mr Will Robinson  
Managing Director  
Tel: 08 9486 9455



**encounter**  
RESOURCES LIMITED

**ASX : ENR**

## **Greenfields Copper Discovery in WA**



**Investor Presentation**

March 2012



**encounter**  
RESOURCES LIMITED



# Disclaimer & Compliance Statement

This presentation has been prepared by Encounter Resources Limited (“Encounter”). The information contained in this presentation is a professional opinion only and is given in good faith. Certain information in this document has been derived from third parties and though Encounter has no reason to believe that it is not accurate, reliable or complete, it has not been independently audited or verified by Encounter.

Any forward-looking statements included in this document involve subjective judgement and analysis and are subject to uncertainties, risks and contingencies, many of which are outside the control of, and maybe unknown to Encounter. In particular, they speak only as of the date of this document, they assume the success of Encounter’s strategies, and they are subject to significant regulatory, business, competitive and economic uncertainties and risks. Actual future events may vary materially from the forward looking statements and the assumptions on which the forward looking statements are based. Recipients of this document (“Recipients”) are cautioned to not place undue reliance on such forward-looking statements.

Encounter makes no representation or warranty as to the accuracy, reliability or completeness of information in this document and does not take responsibility for updating any information or correcting any error or omission which may become apparent after this document has been issued.

To the extent permitted by law, Encounter and its officers, employees, related bodies corporate and agents (“Agents”) disclaim all liability, direct, indirect or consequential (and whether or not arising out of the negligence, default or lack of care of Encounter and/or any of its Agents) for any loss or damage suffered by a Recipient or other persons arising out of, or in connection with, any use or reliance on this presentation or information.

The information in this report that relates to Exploration Results is based on information compiled by Mr. Peter Bewick who is a Member of the Australasian Institute of Mining and Metallurgy. Mr. Bewick is a full time employee of Encounter Resources Ltd and has sufficient experience which is relevant to the style of mineralisation under consideration to qualify as a Competent Person as defined in the 2004 Edition of the 'Australian Code for Reporting of Exploration Results, Mineral Resources and Ore Reserves'. Mr. Bewick consents to the inclusion in the presentation of the matters based on his information in the form and context in which it appears.

# Agenda

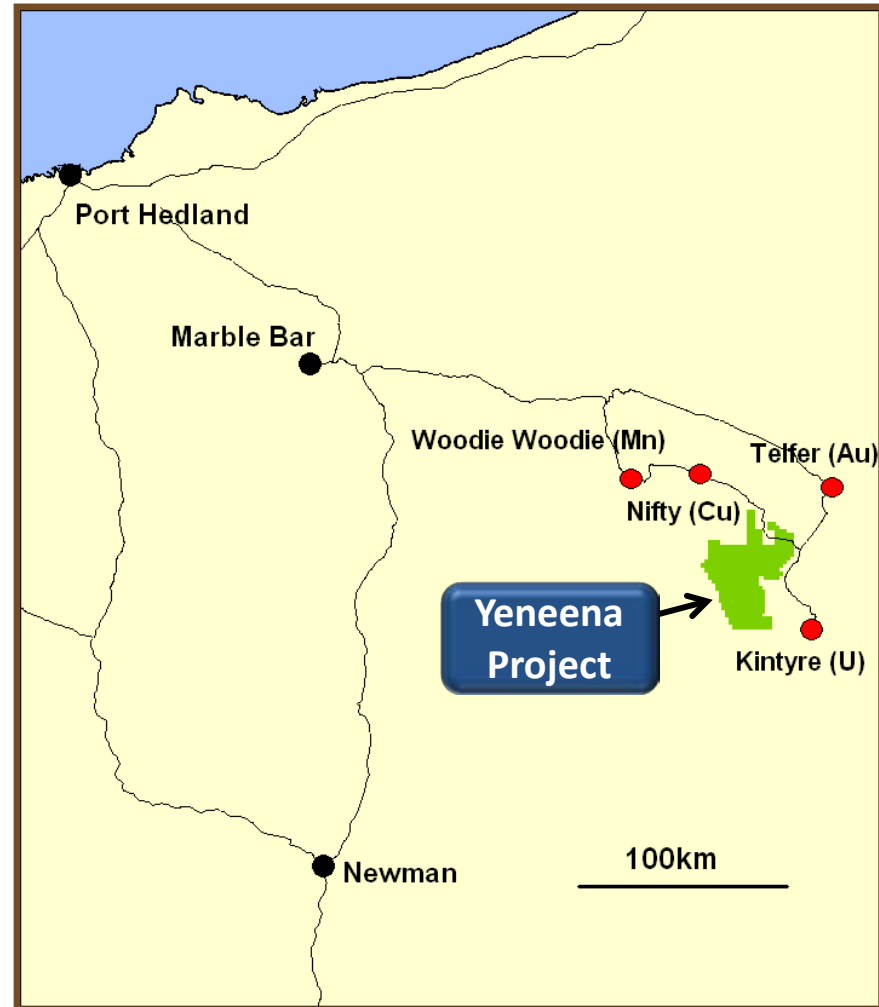
Company Overview

Project Summary

Copper Discoveries 2010-11

- BM1
- BM7
- T4

A New Copper Province?





# Corporate Information

## Board

Paul Chapman - Chairman  
Will Robinson - Managing Director  
Peter Bewick - Exploration Director  
Jon Hronsky - Non-Executive Director  
Kevin Hart / Dan Travers - Company Sec.

## Issued Capital

114.2m\* Ordinary Shares  
7.5m Employee Options

## Market Cap.

A\$45.7m @ A\$0.40/share

## Cash

A\$~7.5m

\*after completion of capital raising see ASX announcement 7<sup>th</sup> February 2012



**encounter**  
RESOURCES LIMITED





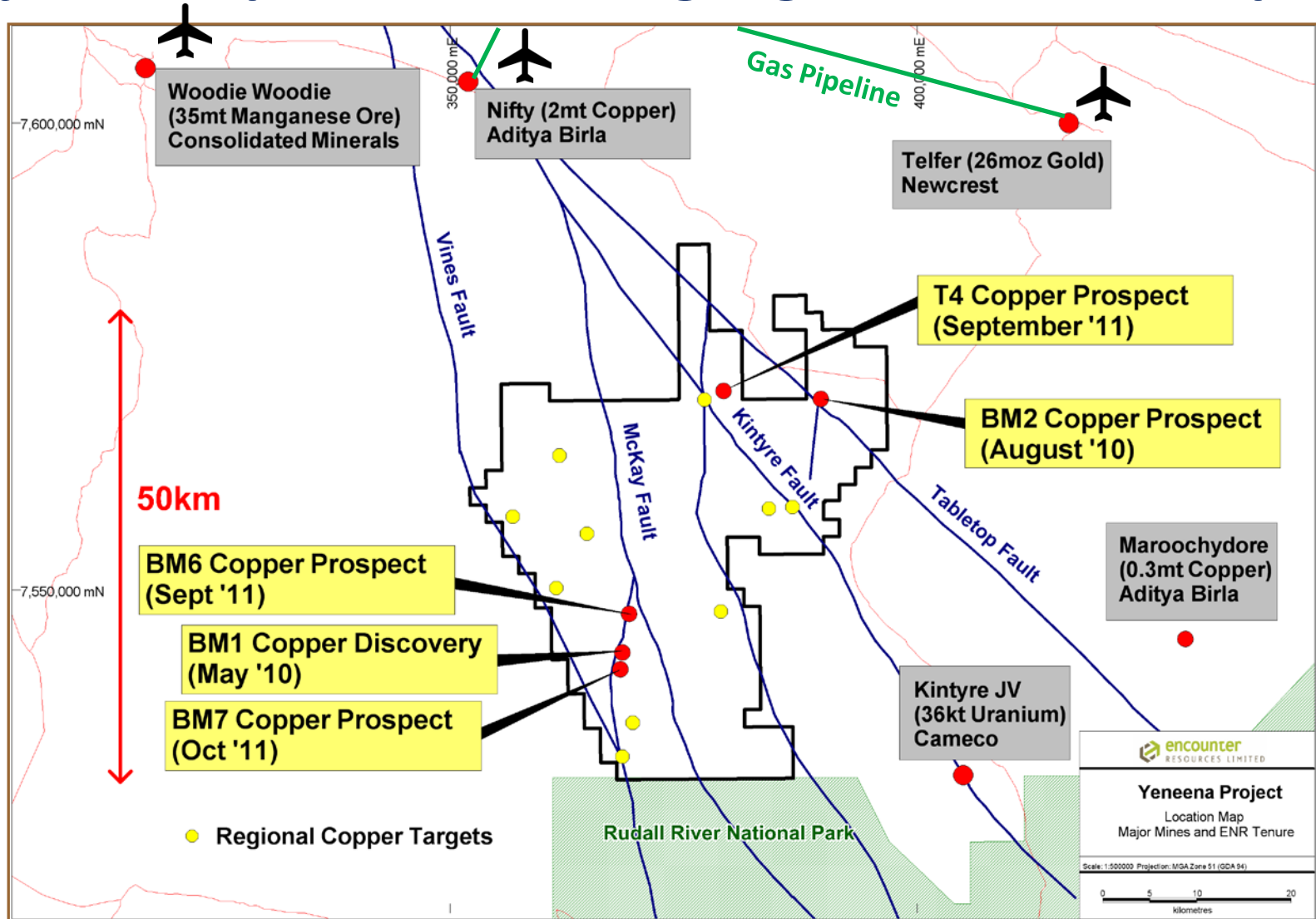
**Sand cover has inhibited previous exploration**



**encounter**  
RESOURCES LIMITED



# Major land position amongst giant mineral deposits



# Milestones in 2011 ...

June



July



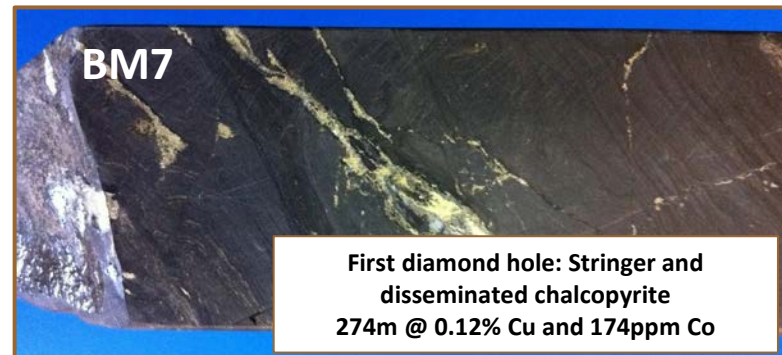
August



October



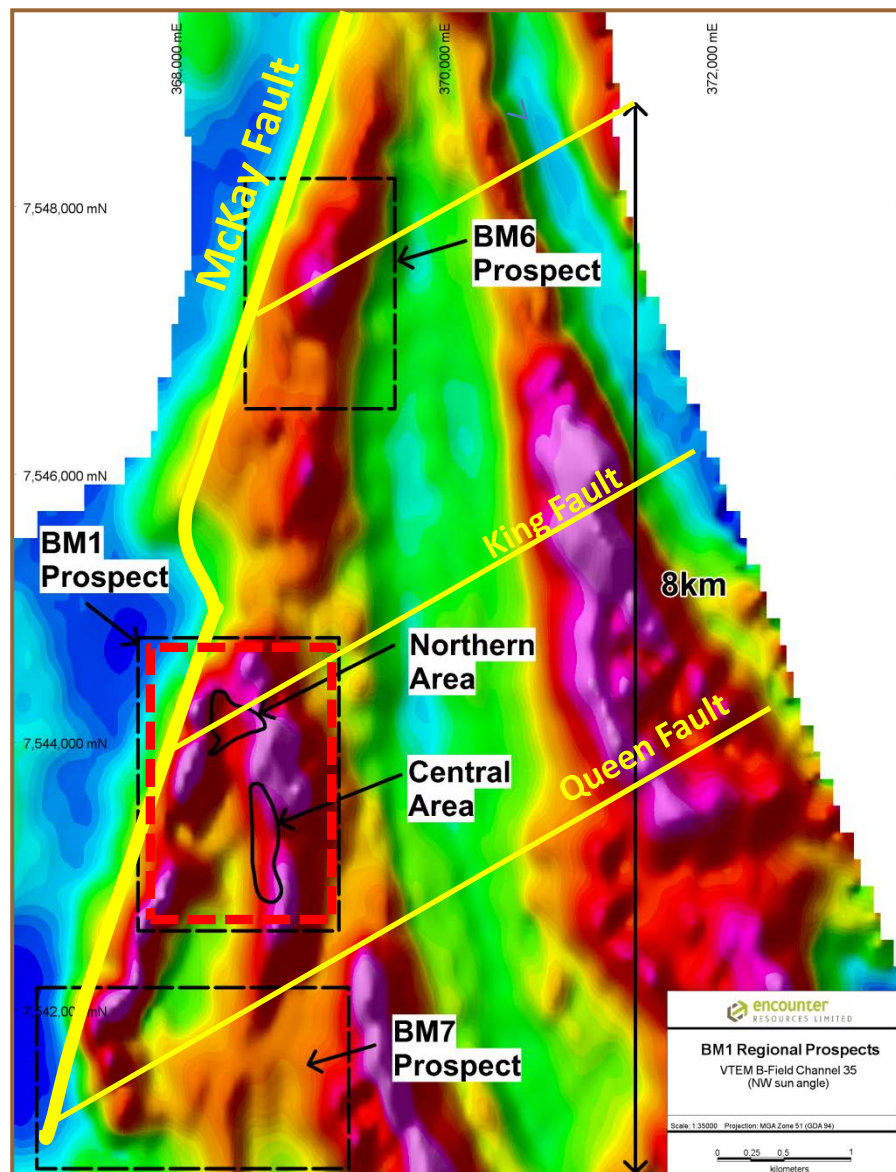
December





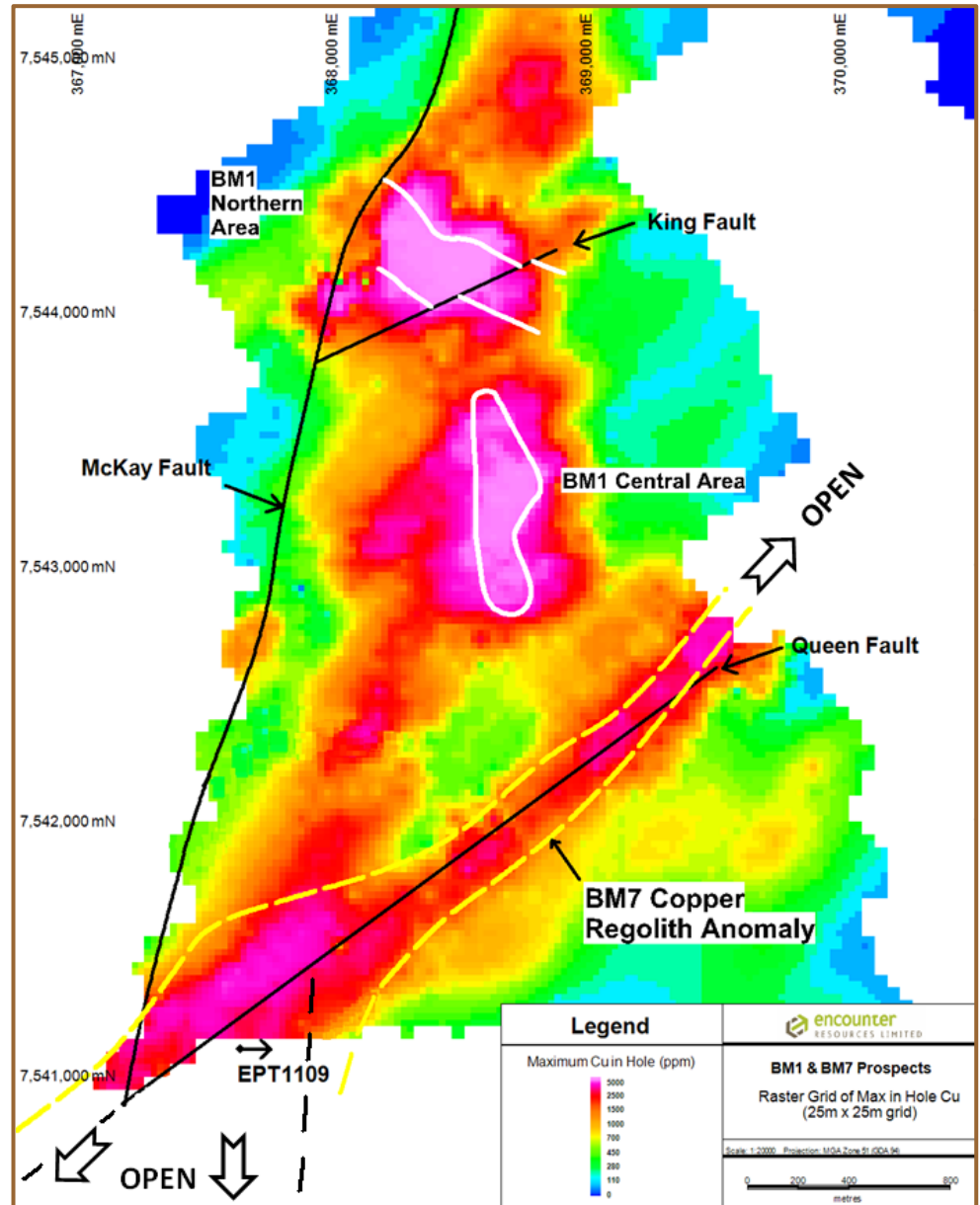
# BM1 Copper Discovery

- Multiple thick, near surface copper oxide intersections grading over 1% Cu
- Copper system +8km long and open
- BM1 Northern Area - coherent zones of near surface copper mineralisation
  - 10m @ 6.8% Cu from 32m (incl. 3m @ 12.3% Cu)
  - 20m @ 2.0% Cu from 22m (incl. 12m @ 3.2% Cu)
  - 12m @ 1.5% Cu from 16m (incl. 2m @ 2.7% Cu)
  - 8m @ 3.6% Cu from 18m (incl. 2m @ 7.6% Cu)
  - 4m @ 5.5% Cu from 66m
- Highly anomalous cobalt and silver  
14m @ 0.5% Co, 3m @ 156g/t silver
- Deep drilling targeting high grade, primary copper sulphide mineralisation



# BM7 Prospect

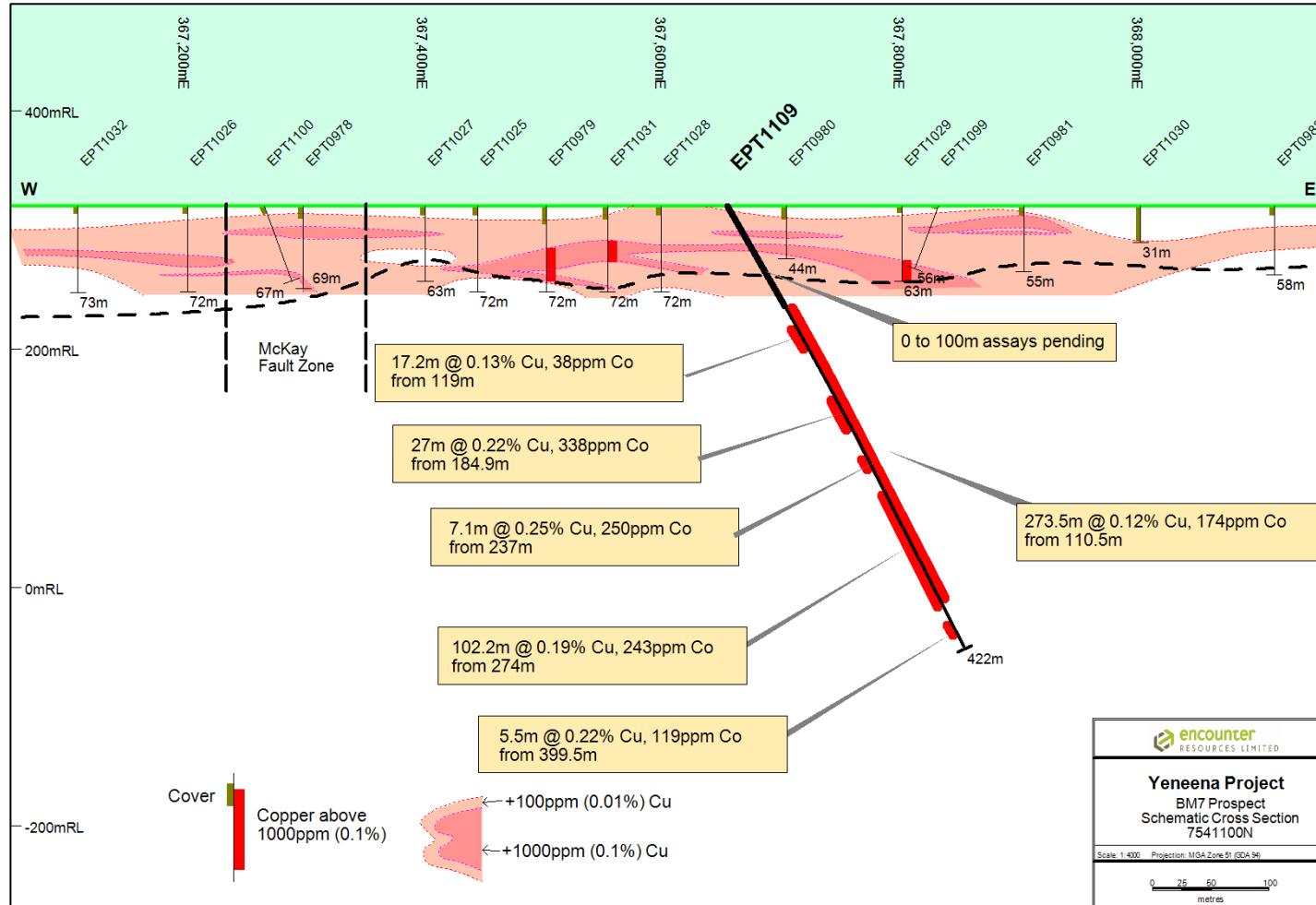
- Major new copper regolith anomaly
- Extending over 3.5km along key regional north-east trending structure (the Queen Fault)
- First diamond drill hole
  - **274m @ 0.12% copper and 174ppm cobalt**
  - Alteration and mineralisation interpreted as marginal to a major sediment-hosted copper deposit.





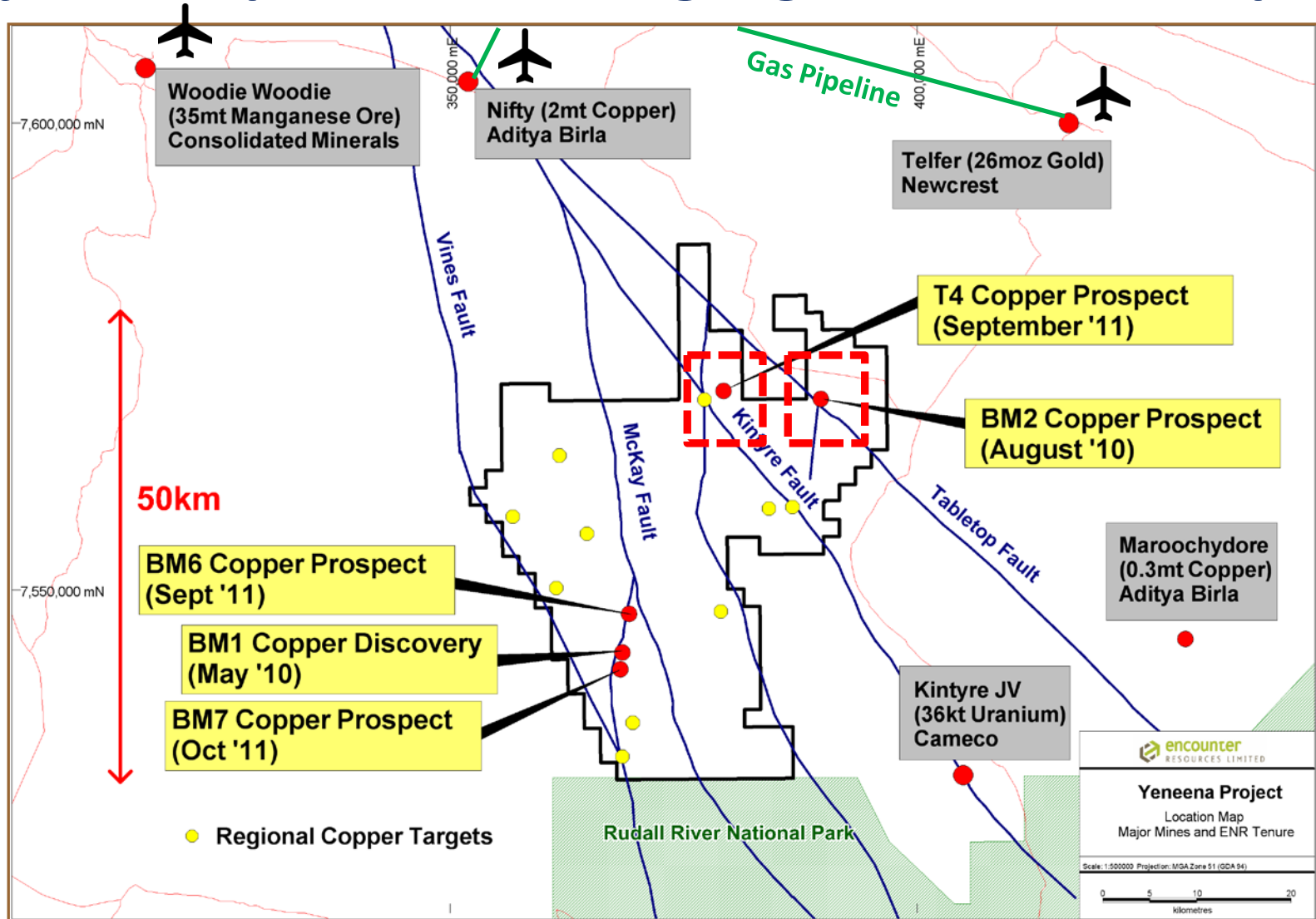
# BM7 Prospect – First Diamond Hole

274m zone containing Cu sulphides from trace levels to pervasive disseminations



EPT1109 Stringer and disseminated chalcopyrite (305m)

# Major land position amongst giant mineral deposits





# Yeneena Project – T4 prospect

**T4**  
▼

*Located 30km north-east of the BM1 Discovery*



**encounter**  
RESOURCES LIMITED

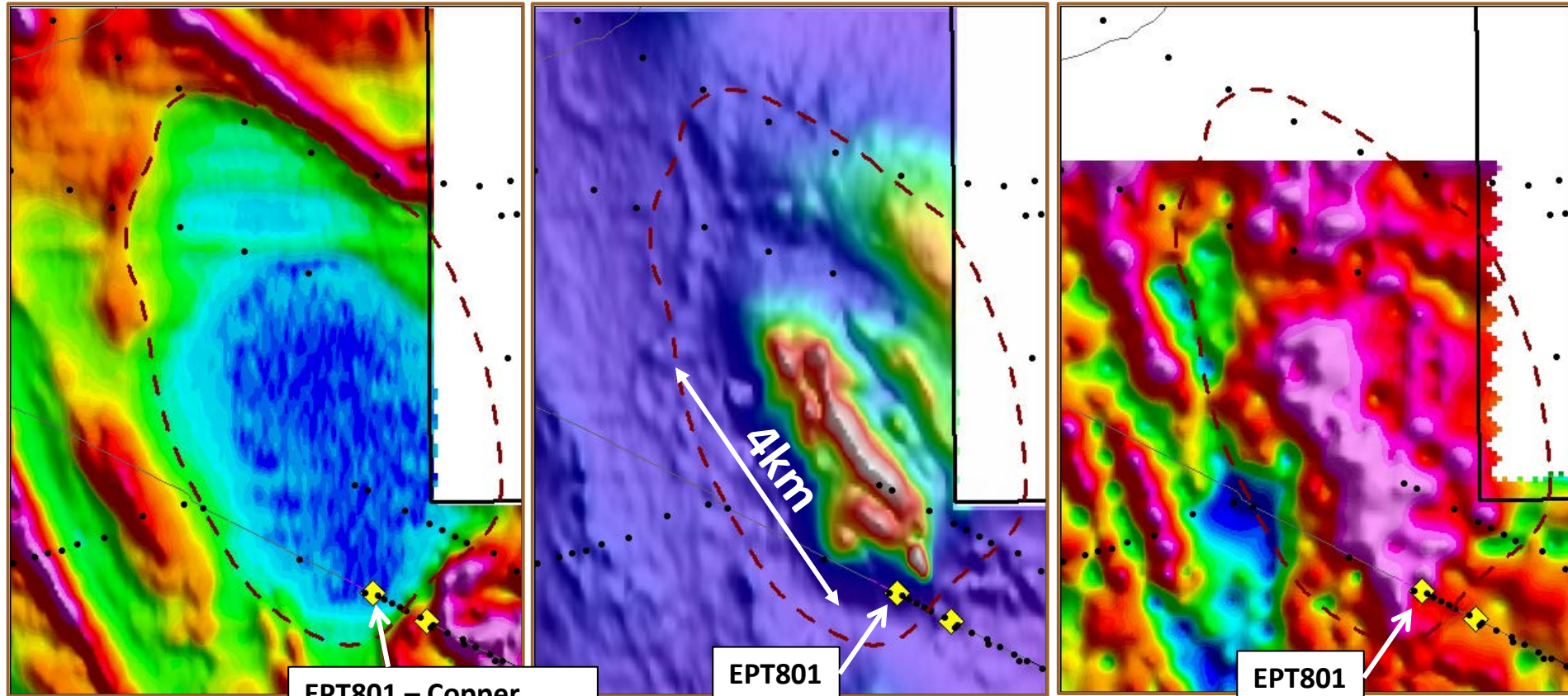


# T4 – Major Copper Prospect

Electromagnetics

Magnetics

Gravity



EPT801 – Copper Sulphides Intersected

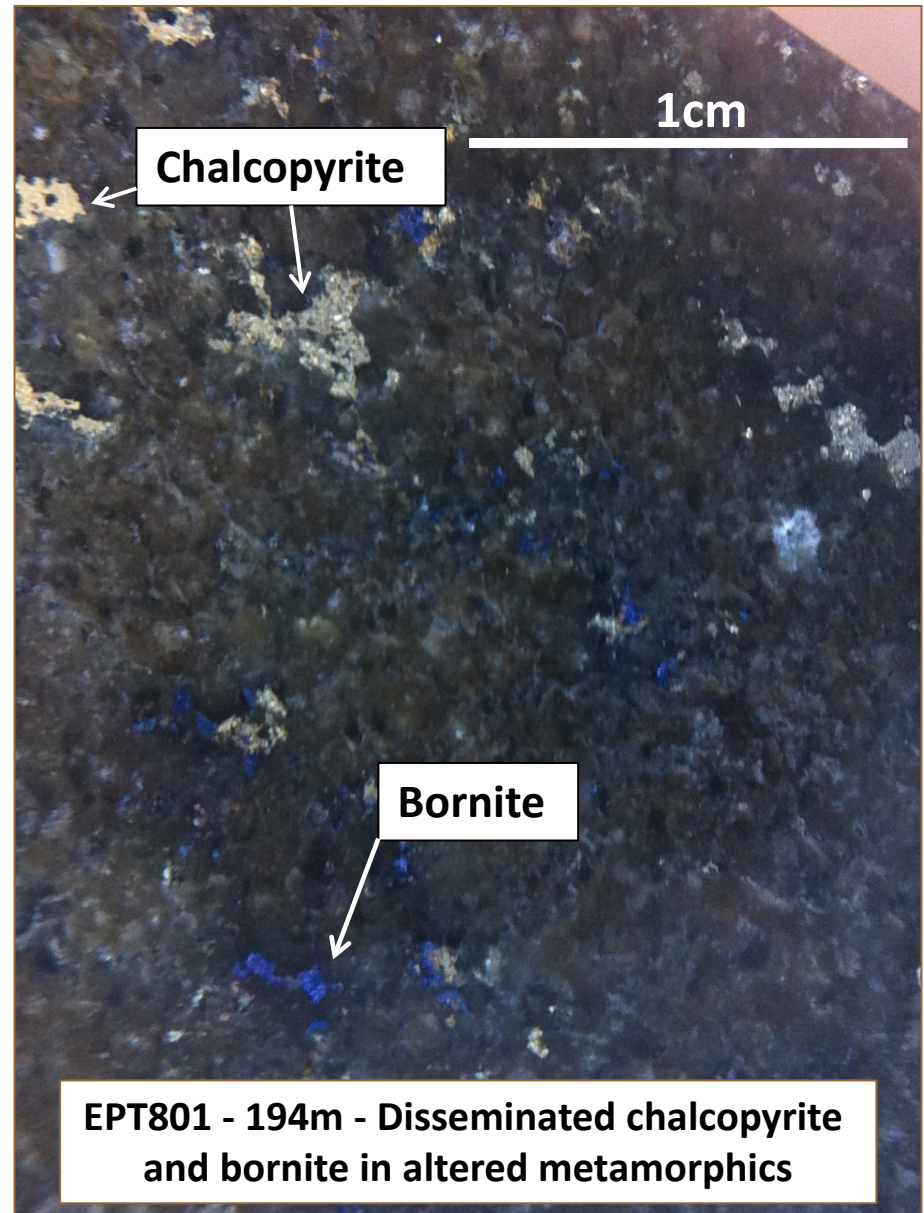
EPT801

EPT801



## T4 - Diamond Drilling

- Stratigraphic hole intersected disseminated copper sulphides including 0.9m @ 0.84% Cu
- Drilling located at the southern end of a +4km long gravity & magnetic anomaly
- New style of copper mineralisation in an unexplored region
- Surface geochemistry highlights copper silver anomalies at key structural targets



# Yeneena Copper Discovery Timeline



**2008-09**

Airborne EM  
Regional geochem  
Target generation

○ **2010**

Greenfields  
copper oxide  
discoveries at  
BM1 & BM2



○ **2011**

Discovery of copper  
sulphides at BM1 & T4

New copper oxide  
discoveries at BM6 &  
BM7

Primary zinc discovered  
at BM2

BM7 copper sulphides

○

**2012 Objectives**

Large scale, high grade  
copper sulphide discovery  
at BM1, BM7

Drill testing of large scale  
T4 copper prospect

Follow up base metal  
discovery at BM2

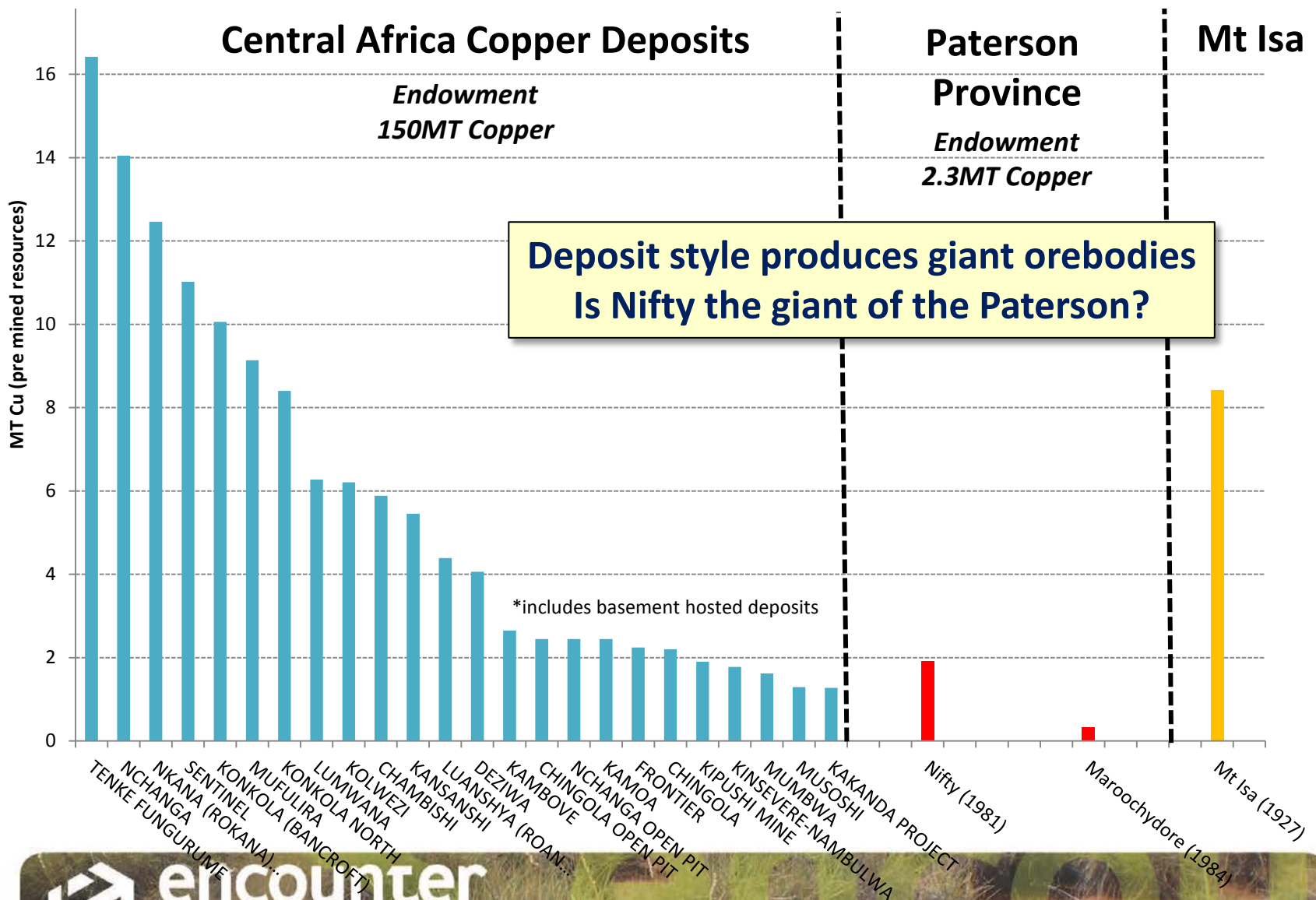
Regional target testing



**encounter**  
RESOURCES LIMITED



# Sediment Hosted Copper Deposits



# Yeneena Copper Discovery

- New greenfields copper discovery made in 2010
- Base metal sulphides discovered at four prospects in 2011
- Early stage indications of a potential new copper province
  - High drilling success rate
  - Large mineralisation footprints
  - Thick, high grade intersections
- Land position secured (1300km<sup>2</sup>, 100% owned)
- Well funded explorer with 25,000m drill program in 2012