



encounter
RESOURCES LIMITED

ASX : ENR

Greenfields Copper Discovery in WA



Investor Update
November 2012

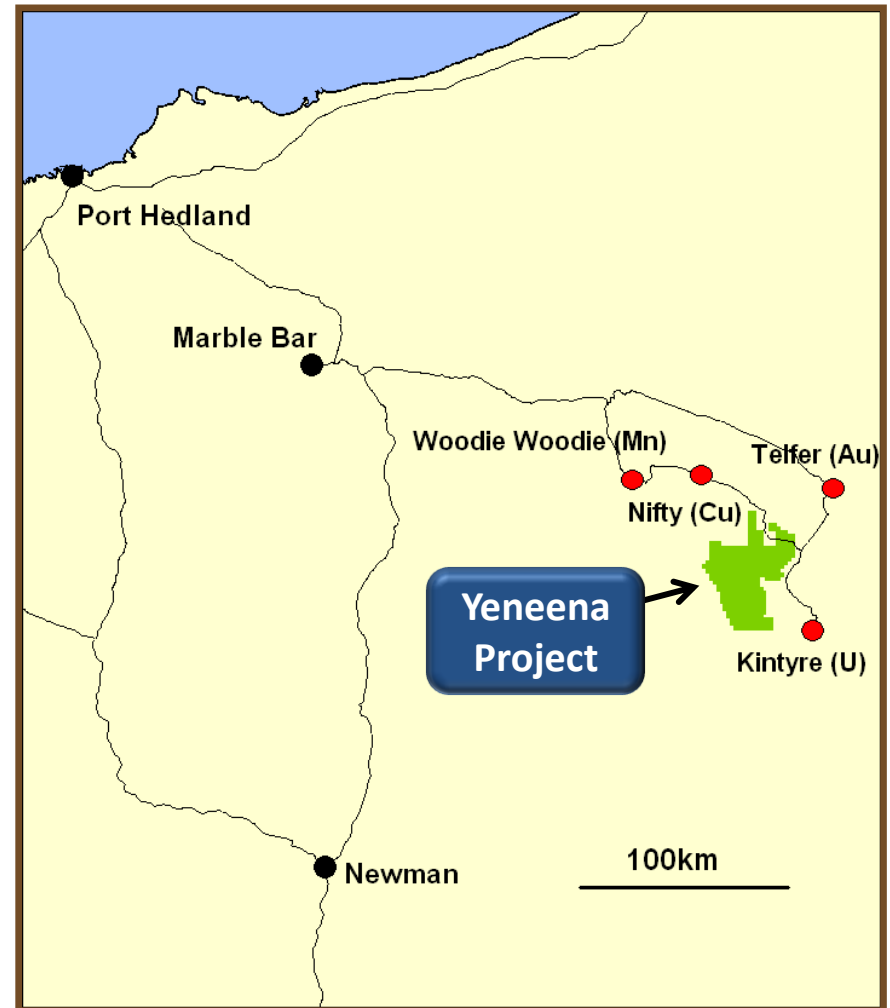


encounter
RESOURCES LIMITED



The Investment Opportunity

- Greenfields copper discovery in WA – 11km long and growing
- Multiple prospects with mineralised intersections
- Major land position secured
- Experienced team of former WMC executives
- 30,000m drill program in 2012



Corporate Information

Board

Paul Chapman - Chairman
Will Robinson - Managing Director
Peter Bewick - Exploration Director
Jon Hronsky - Non-Executive Director
Kevin Hart / Dan Travers - Company Sec.

Issued Capital

114.2m Ordinary Shares
8.1m Employee Options

Market Cap.

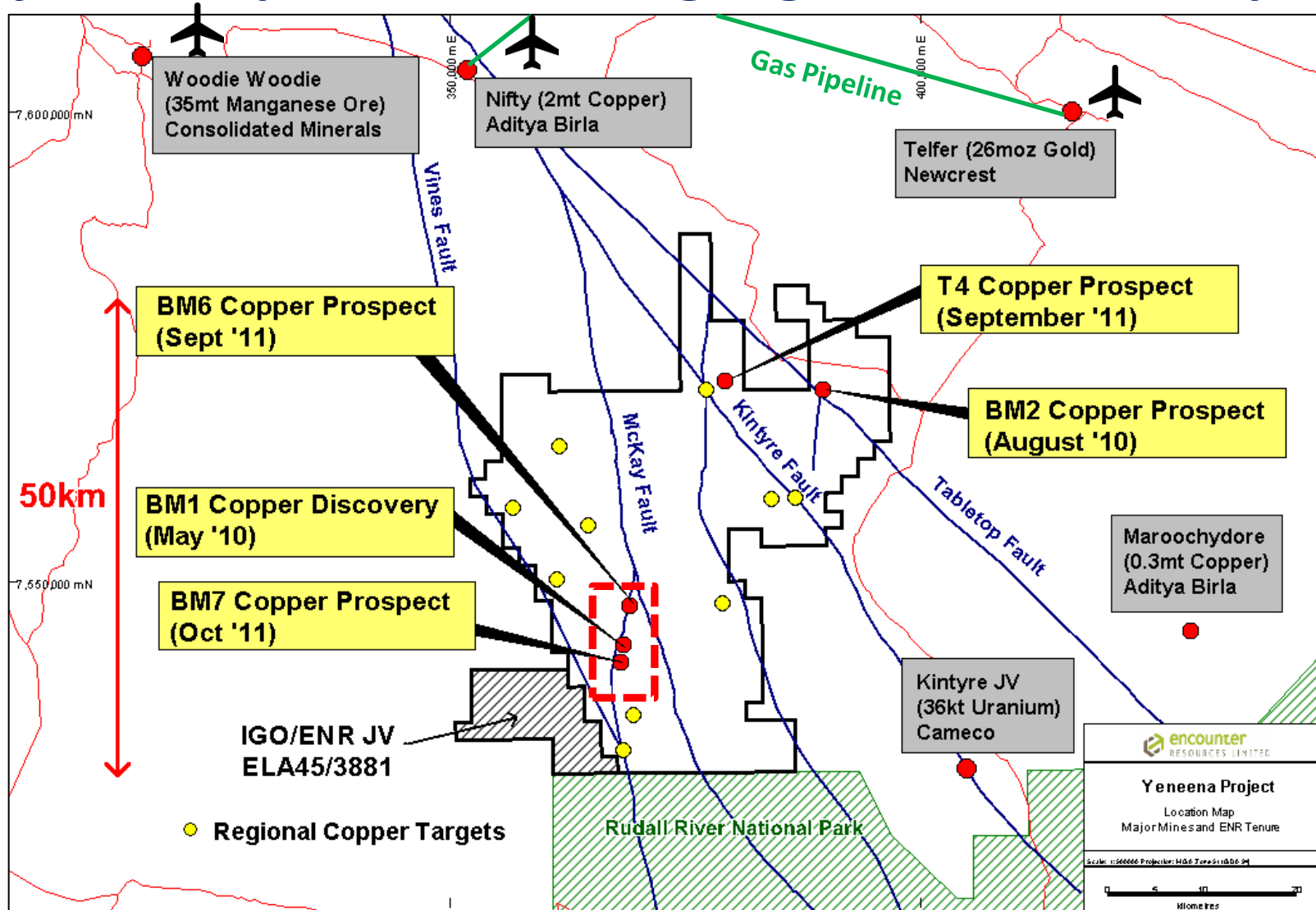
A\$21.7m @ A\$0.19/share

Cash (30/9/12)

A\$3.2m



Major land position amongst giant mineral deposits



BM1 - BM7 Prospects

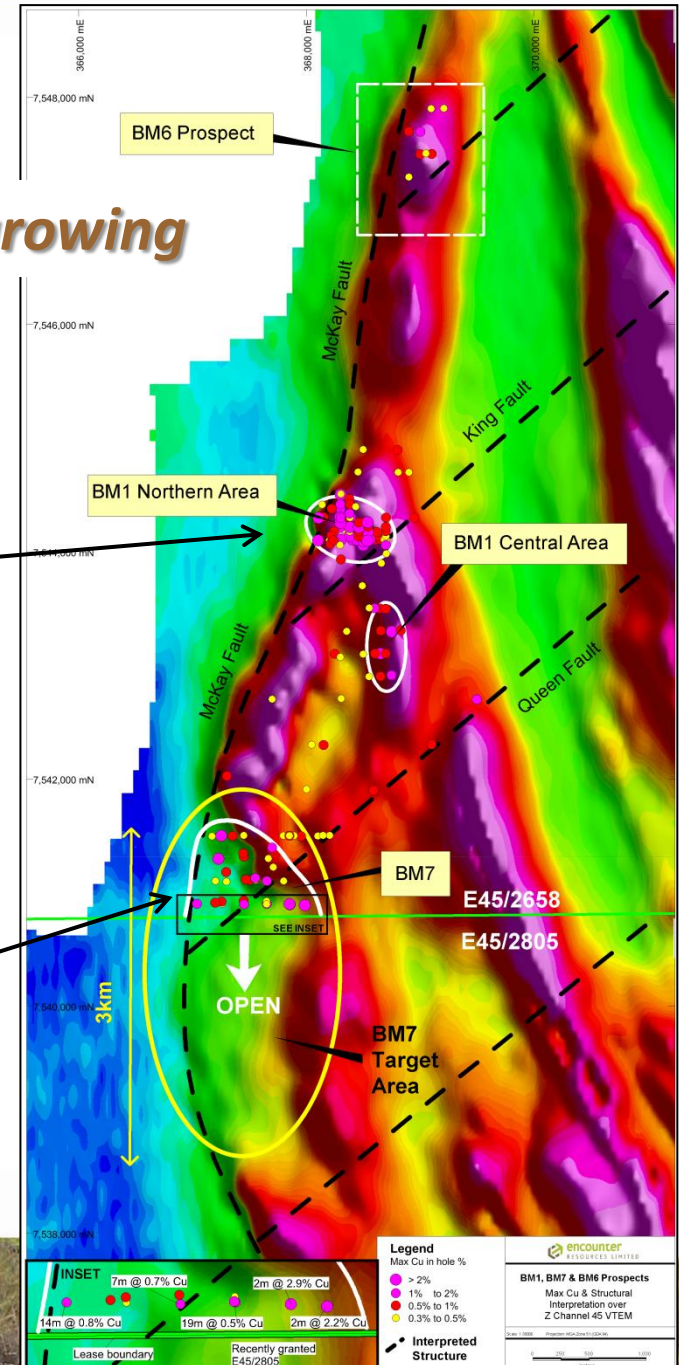
Copper mineral system 11km long and growing

BM1 - coherent zone of near surface copper oxide mineralisation

- 10m @ 6.8% Cu from 32m
- 20m @ 2.0% Cu from 22m
- 8m @ 3.6% Cu from 18m
- 4m @ 5.5% Cu from 66m

BM7 - New copper discovery 3km south of BM1

- 34m @ 0.6% Cu incl. 10m @ 1.6% Cu
- 73m @ 0.4% Cu incl. 8m @ 1.0% Cu
- 22m @ 0.4% Cu incl. 2m @ 2.9% Cu
- 34m @ 0.5% Cu incl. 14m @ 0.8% Cu

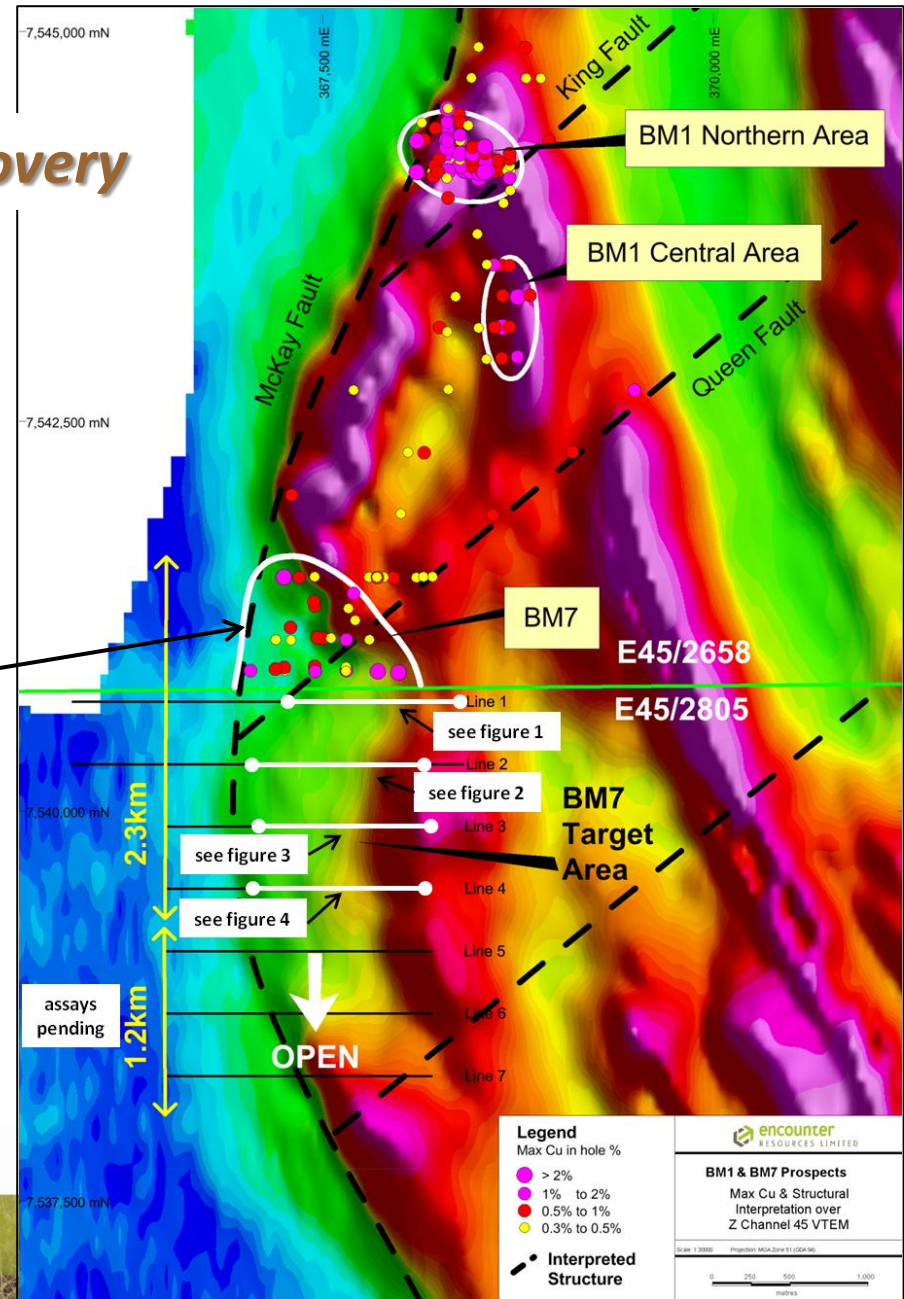


11km

BM7 Prospect

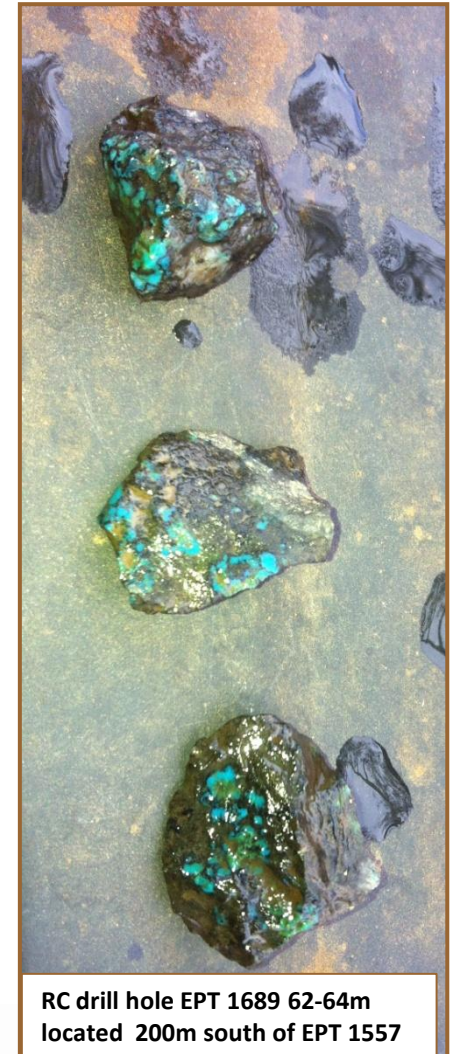
Concealed large scale copper discovery

- Giant near surface footprint
- Mineral system widens and is strengthening to the south
 - 34m @ 0.6% Cu incl. 10m @ 1.6% Cu
 - 73m @ 0.4% Cu incl. 8m @ 1.0% Cu
 - 22m @ 0.4% Cu incl. 2m @ 2.9% Cu
 - 34m @ 0.5% Cu incl. 14m @ 0.8% Cu
 - 16m @ 0.4% Cu incl. 7m @ 0.7% Cu
- 3.5km long target zone coincident with a major flexure in the McKay Fault

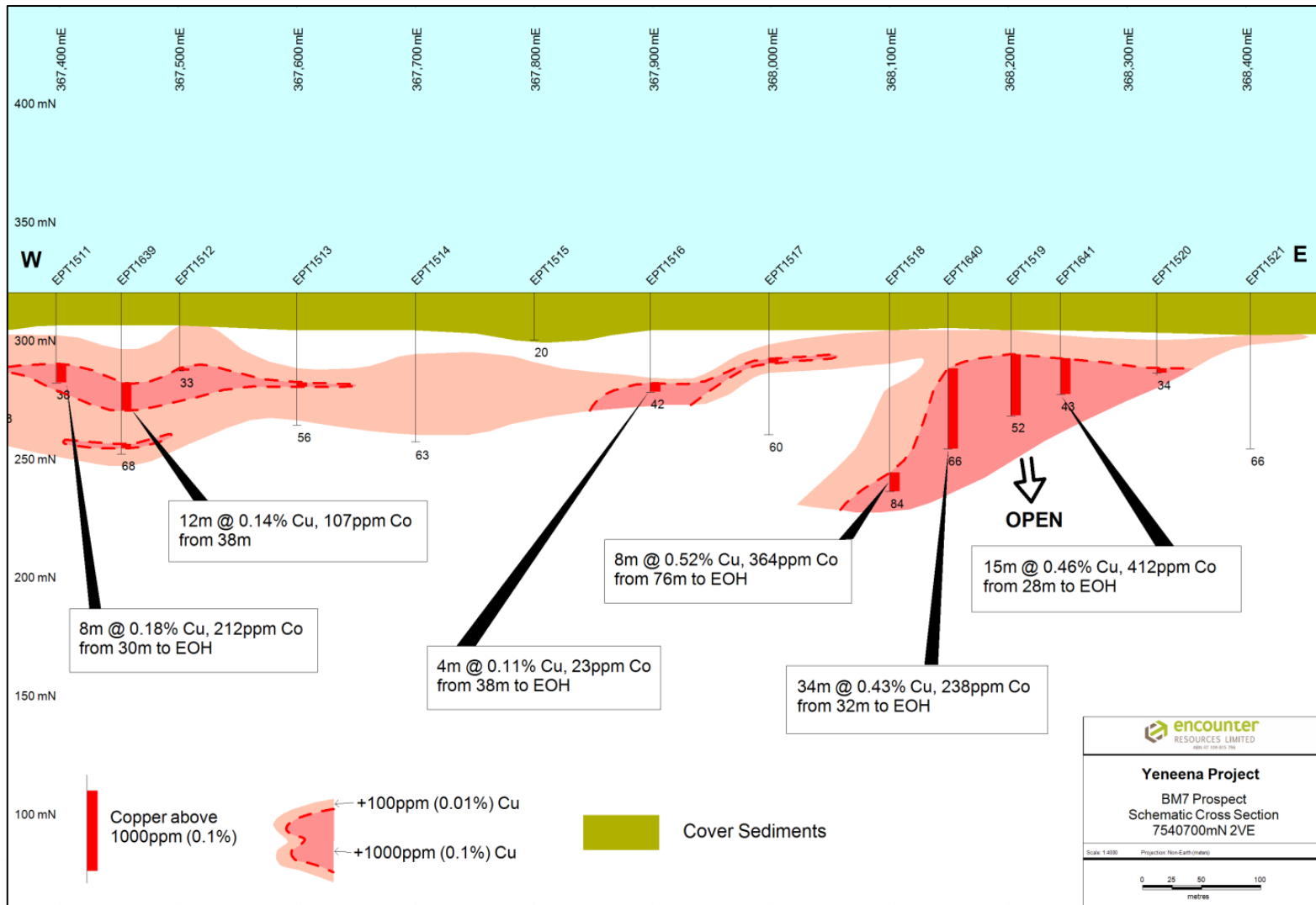


Extensive 'End of Hole' Copper at BM7

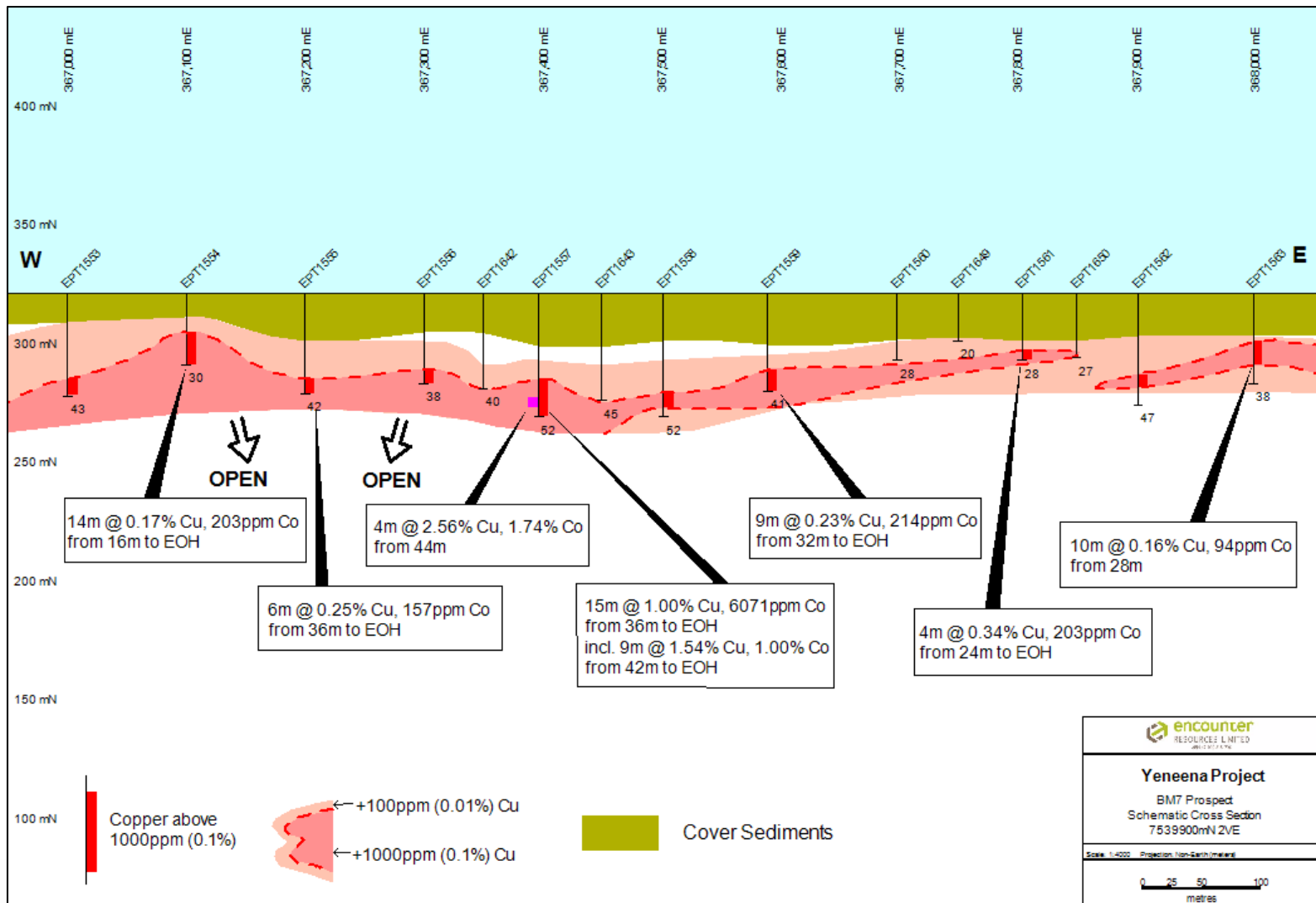
- Results from first four lines of aircore drilling include:
 - 9m @ 1.54% Cu and 1.0% Co from 42m to EOH (end of hole)
 - 6m @ 0.41% Cu and 438ppm Co from 26m to EOH
 - 8m @ 0.52% Cu and 364ppm Co from 76m to EOH
 - 34m @ 0.43% Cu and 238ppm Co from 32m to EOH
 - 24m @ 0.35% Cu and 554ppm Co from 28m to EOH
 - 15m @ 0.46% Cu and 412ppm Co from 28m to EOH
- Gossanous ex-sulphide textures identified in EOH samples
- BM7 copper system over 2.3km long and remains open
- Further aircore assay results early December 2012
- 2,400m RC drill program completed, assays December 2012



BM7 Aircore - 'End of Hole' Cu – Line 1

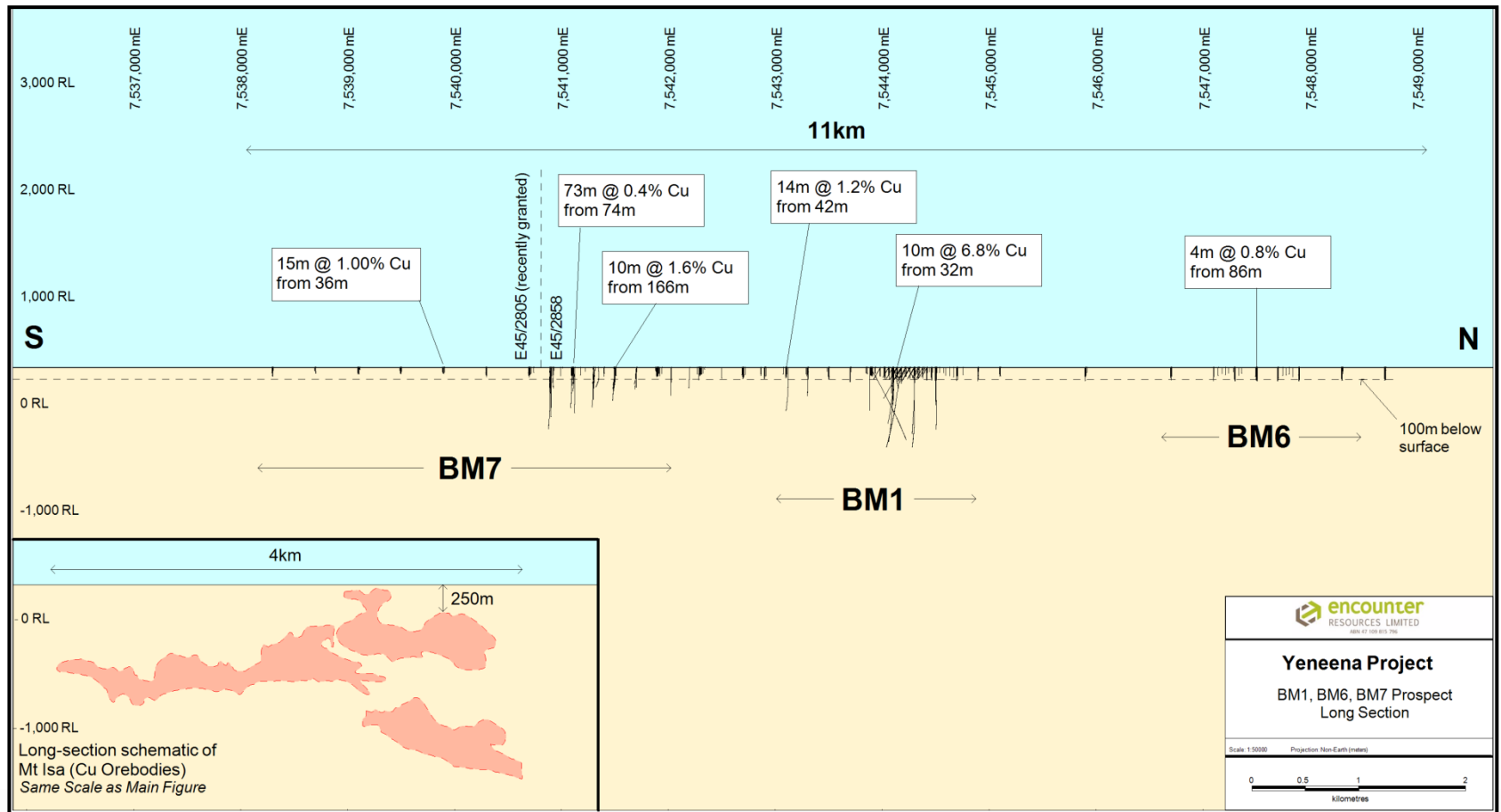


BM7 Aircore - 'End of Hole' Cu – Line 3

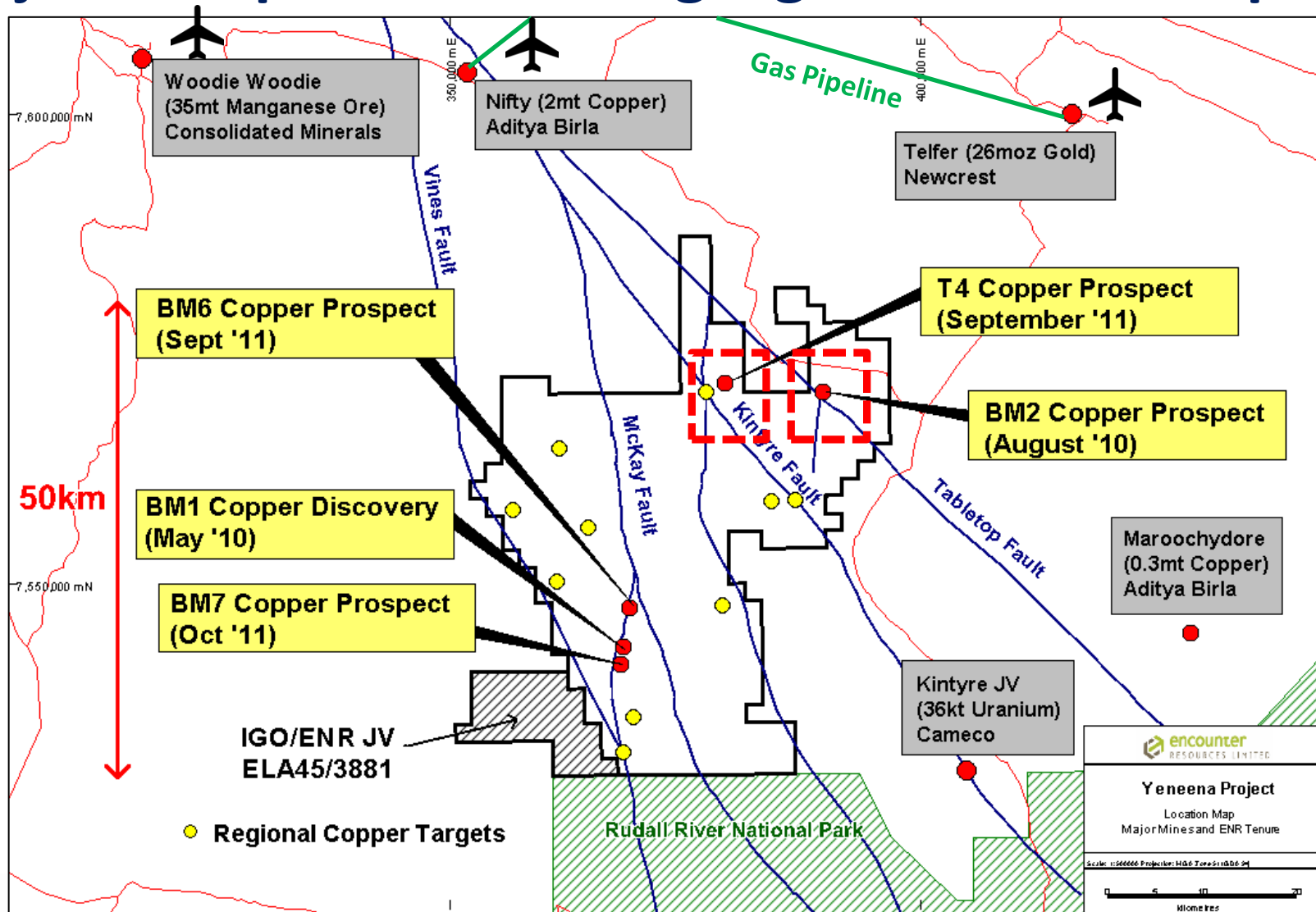


Regional Long Section BM6 to BM7

Copper mineral system 11km long and open



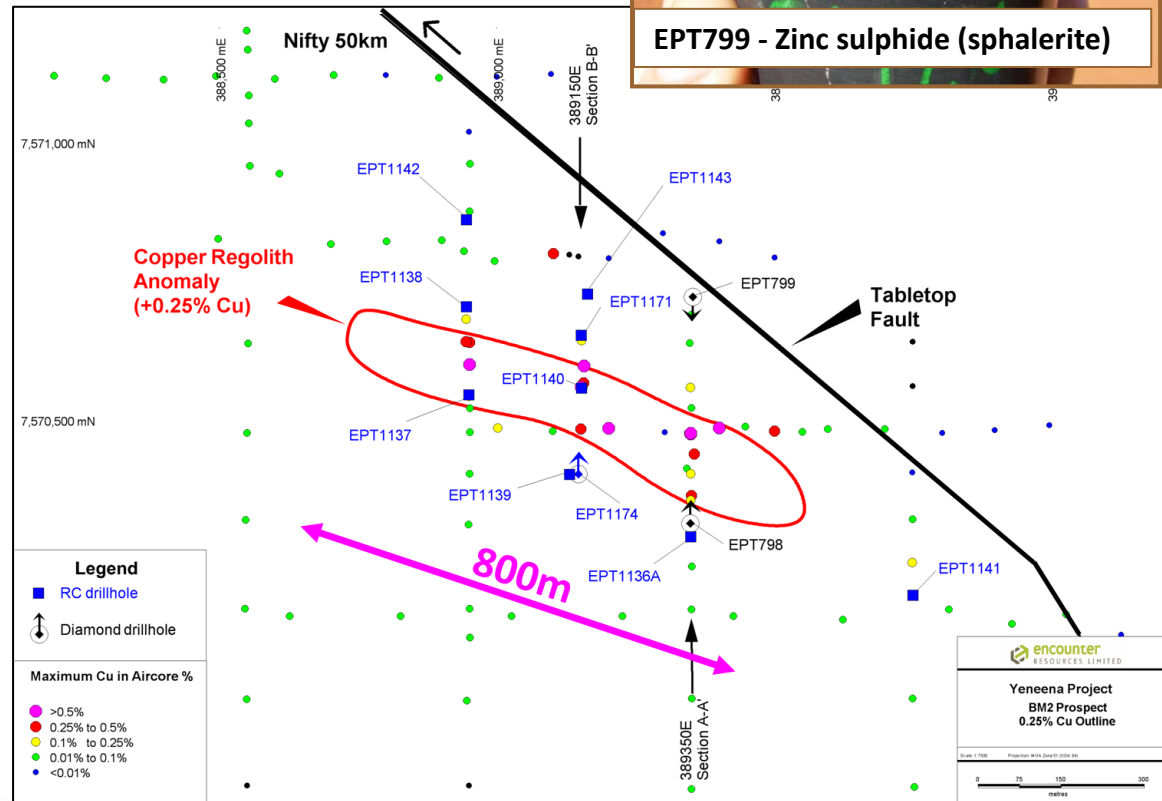
Major land position amongst giant mineral deposits



BM2 Base Metal Prospect

800m long +0.25% copper regolith anomaly

- WA Govt. co-funded drilling program completed in April
 - 26m @ 0.60% Cu from 100m
 - 201m @ 0.61% Zn from 233m to end of hole
- Mineralisation remains open to the west and at depth
- Modelled EM conductor down dip west of copper sulphide mineralisation

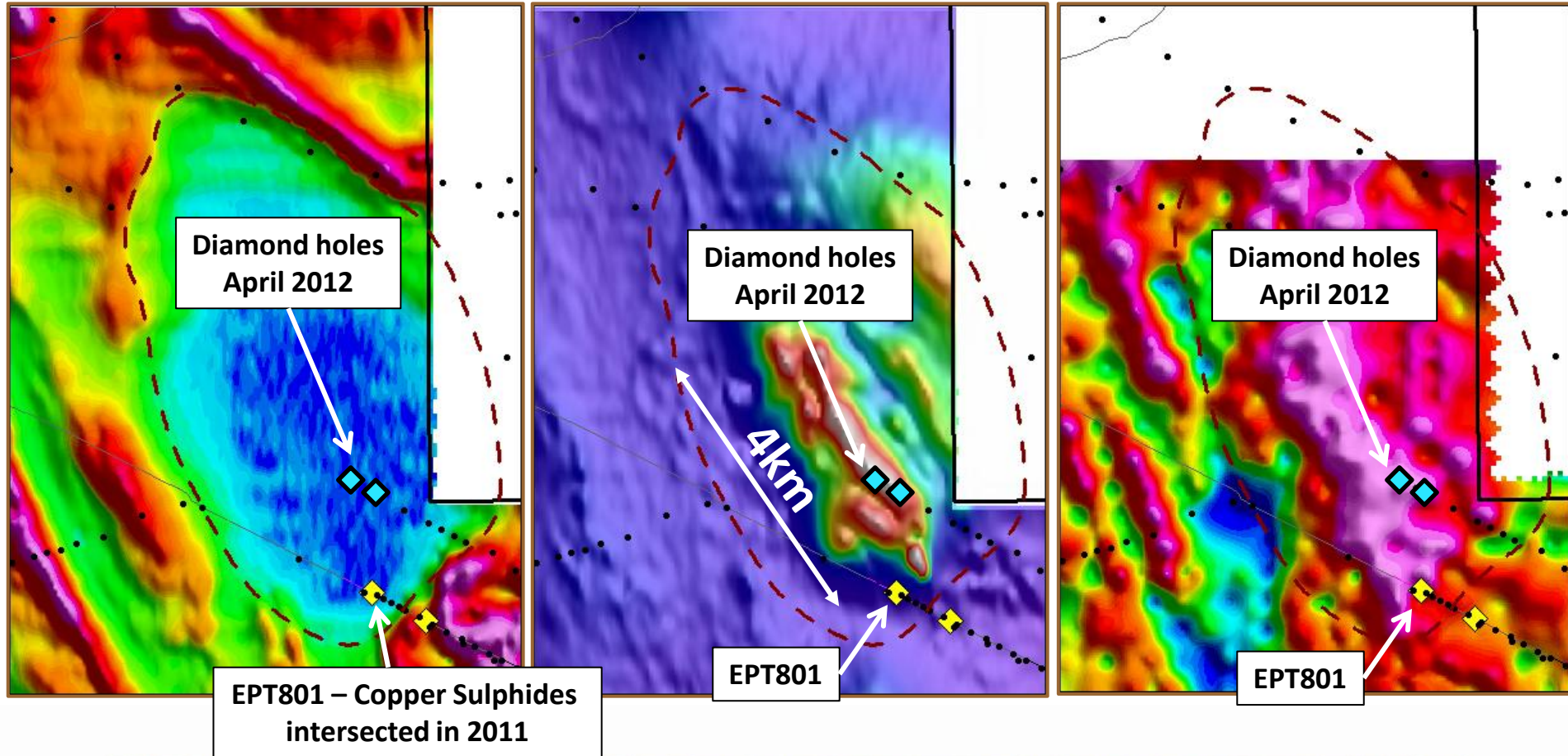


T4 – Copper Prospect

Electromagnetics

Magnetics

Gravity



T4 Copper Prospect

- Stratigraphic hole EPT 801 intersected disseminated copper sulphides including 0.9m @ 0.84% Cu
- Drilling located at the southern end of a +4km long gravity & magnetic anomaly
- 5,700m track mounted aircore program completed August 2012
- Copper anomalism adjacent to magnetic anomaly



Yeneena Copper Discovery Timeline



2008-09

Airborne EM
Regional geochem
Target generation

2010

Greenfields
copper oxide
discoveries at
BM1 & BM2



2011

Discovery of copper
sulphides at BM1 & T4
New copper oxide
discoveries at BM6 &
BM7
Primary zinc discovered
at BM2
BM7 copper sulphides

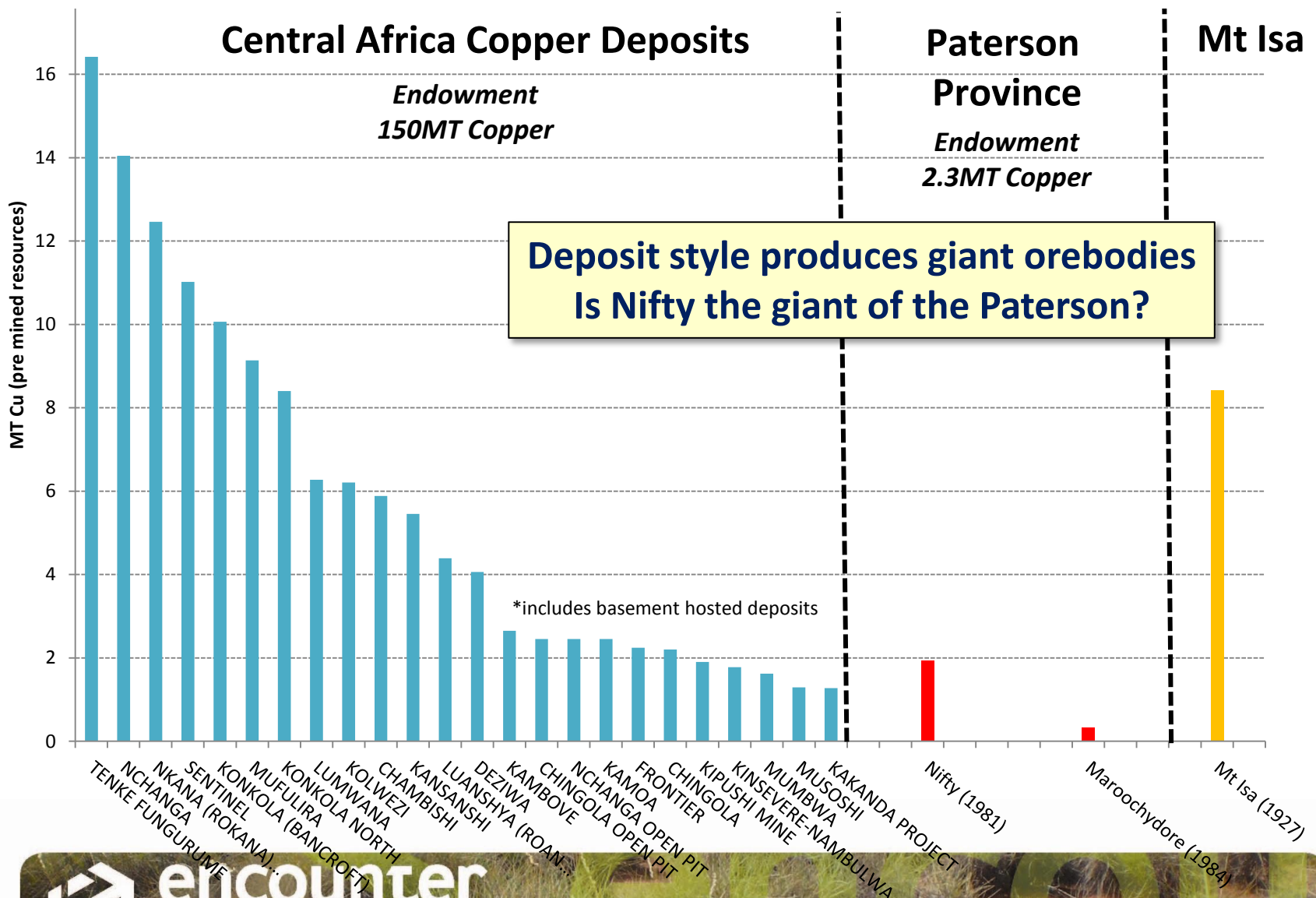
2012 Objectives

Large scale, high grade
copper sulphide discovery
at BM1, BM7
Drill testing of large scale
T4 copper prospect
Follow up base metal
discovery at BM2
Regional target testing



encounter
RESOURCES LIMITED

Sediment Hosted Copper Deposits



Yeneena Copper Discovery

- New greenfields copper discovery made in 2010
- Base metal sulphides discovered at four prospects in 2011
- Early stage indications of a potential new copper province
 - High drilling success rate
 - Large mineralisation footprints
 - Thick, high grade intersections
- Land position secured (1400km², 100% owned)
- 30,000m drill program completed in 2012

Disclaimer & Compliance Statement

This presentation has been prepared by Encounter Resources Limited (“Encounter”). The information contained in this presentation is a professional opinion only and is given in good faith. Certain information in this document has been derived from third parties and though Encounter has no reason to believe that it is not accurate, reliable or complete, it has not been independently audited or verified by Encounter.

Any forward-looking statements included in this document involve subjective judgement and analysis and are subject to uncertainties, risks and contingencies, many of which are outside the control of, and maybe unknown to Encounter. In particular, they speak only as of the date of this document, they assume the success of Encounter’s strategies, and they are subject to significant regulatory, business, competitive and economic uncertainties and risks. Actual future events may vary materially from the forward looking statements and the assumptions on which the forward looking statements are based. Recipients of this document (“Recipients”) are cautioned to not place undue reliance on such forward-looking statements.

Encounter makes no representation or warranty as to the accuracy, reliability or completeness of information in this document and does not take responsibility for updating any information or correcting any error or omission which may become apparent after this document has been issued.

To the extent permitted by law, Encounter and its officers, employees, related bodies corporate and agents (“Agents”) disclaim all liability, direct, indirect or consequential (and whether or not arising out of the negligence, default or lack of care of Encounter and/or any of its Agents) for any loss or damage suffered by a Recipient or other persons arising out of, or in connection with, any use or reliance on this presentation or information.

The information in this report that relates to Exploration Results is based on information compiled by Mr. Peter Bewick who is a Member of the Australasian Institute of Mining and Metallurgy. Mr. Bewick is a full time employee of Encounter Resources Ltd and has sufficient experience which is relevant to the style of mineralisation under consideration to qualify as a Competent Person as defined in the 2004 Edition of the 'Australian Code for Reporting of Exploration Results, Mineral Resources and Ore Reserves'. Mr. Bewick consents to the inclusion in the presentation of the matters based on his information in the form and context in which it appears.

Drill hole information for EPT 1689 referenced on Slide 7 tabulated below. Assays from this hole are pending.

Hole ID	Northing (m)	Easting (m)	RL (m)	EOH (m)	Dip	Azi
EPT1689	7,539,700	367,350	320	174	-60	090

