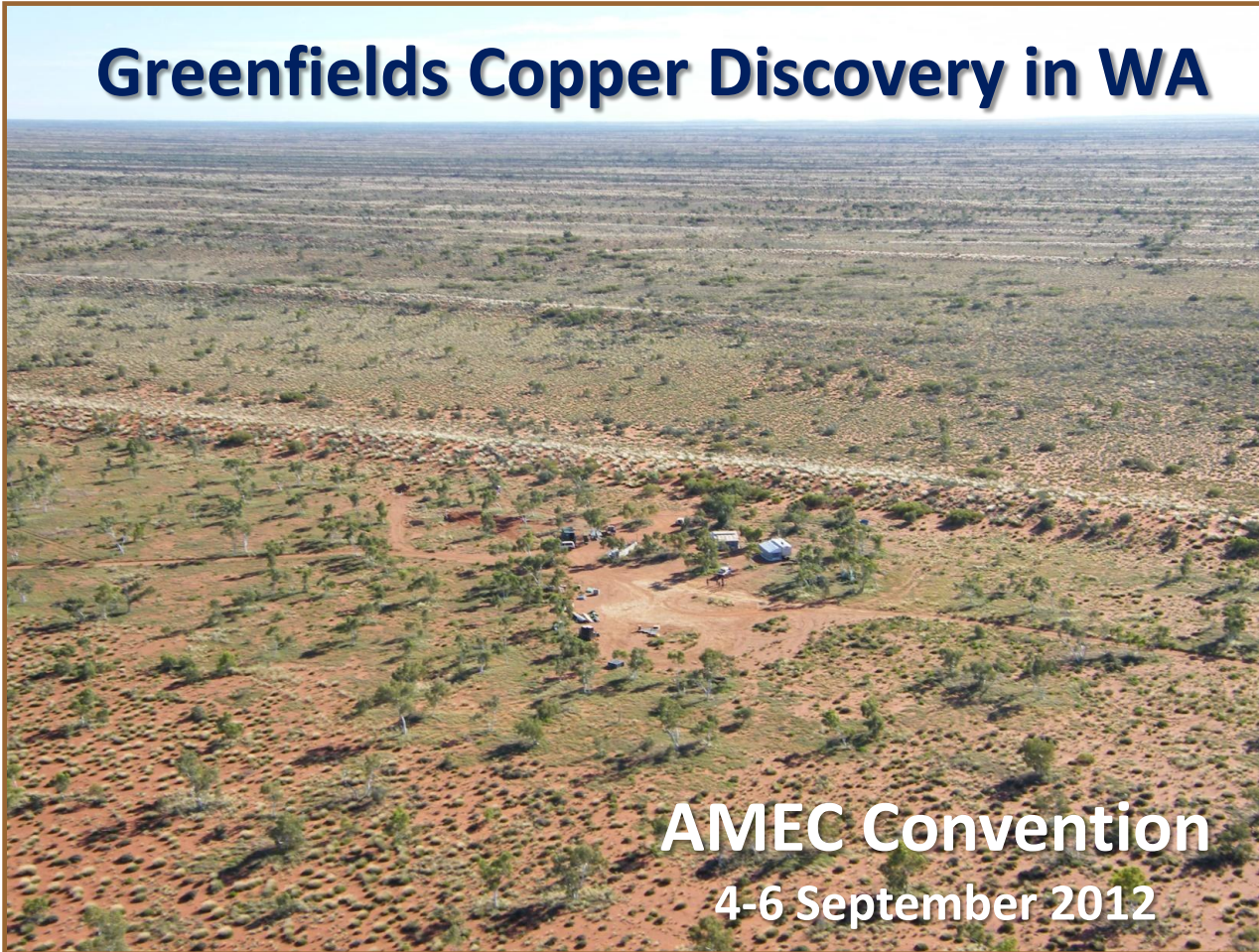




**encounter**  
RESOURCES LIMITED

**ASX : ENR**

## **Greenfields Copper Discovery in WA**



**AMEC Convention**  
4-6 September 2012

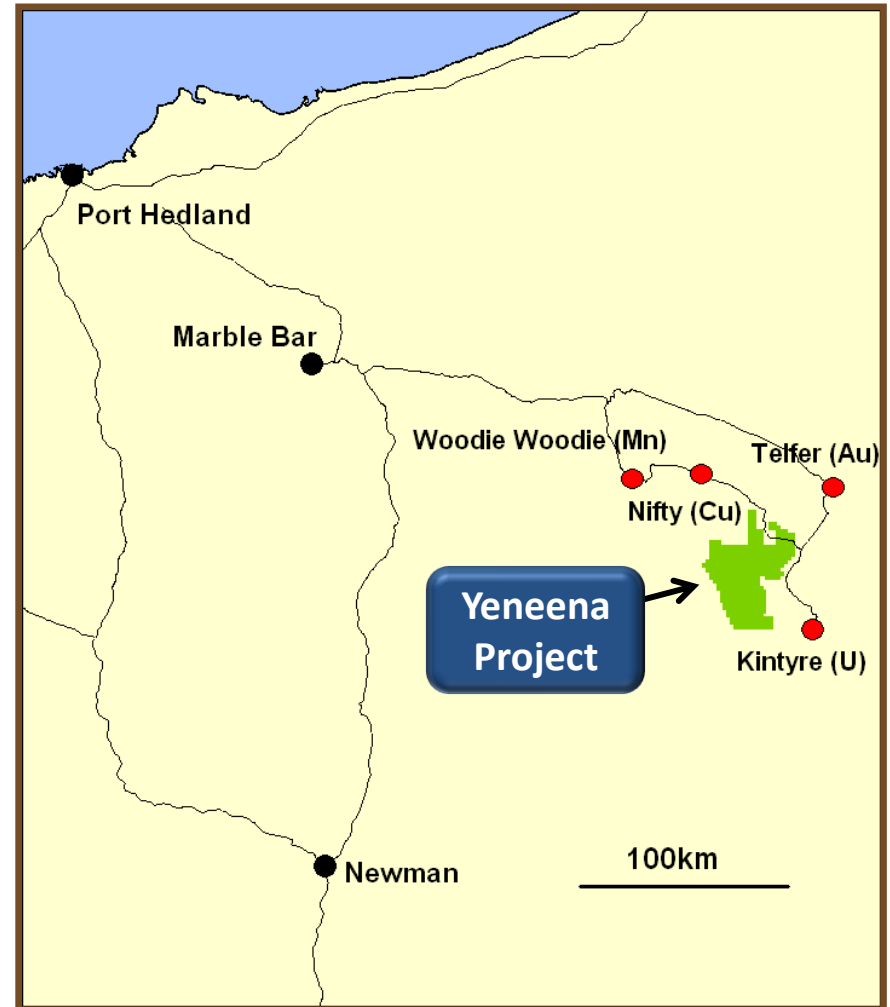


**encounter**  
RESOURCES LIMITED



# The Investment Opportunity

- Significant new copper discovery in WA
- Multiple prospects with mineralised intersections
- Major land position secured
- Experienced team of former WMC executives
- Sound cash position
- 25,000m drill program in 2012



# Corporate Information

## Board

Paul Chapman - Chairman  
Will Robinson - Managing Director  
Peter Bewick - Exploration Director  
Jon Hronsky - Non-Executive Director  
Kevin Hart / Dan Travers - Company Sec.

## Issued Capital

114.2m Ordinary Shares  
8.1m Employee Options

## Market Cap.

A\$19.4m @ A\$0.17/share

## Cash (30/6/12)

A\$5.2m





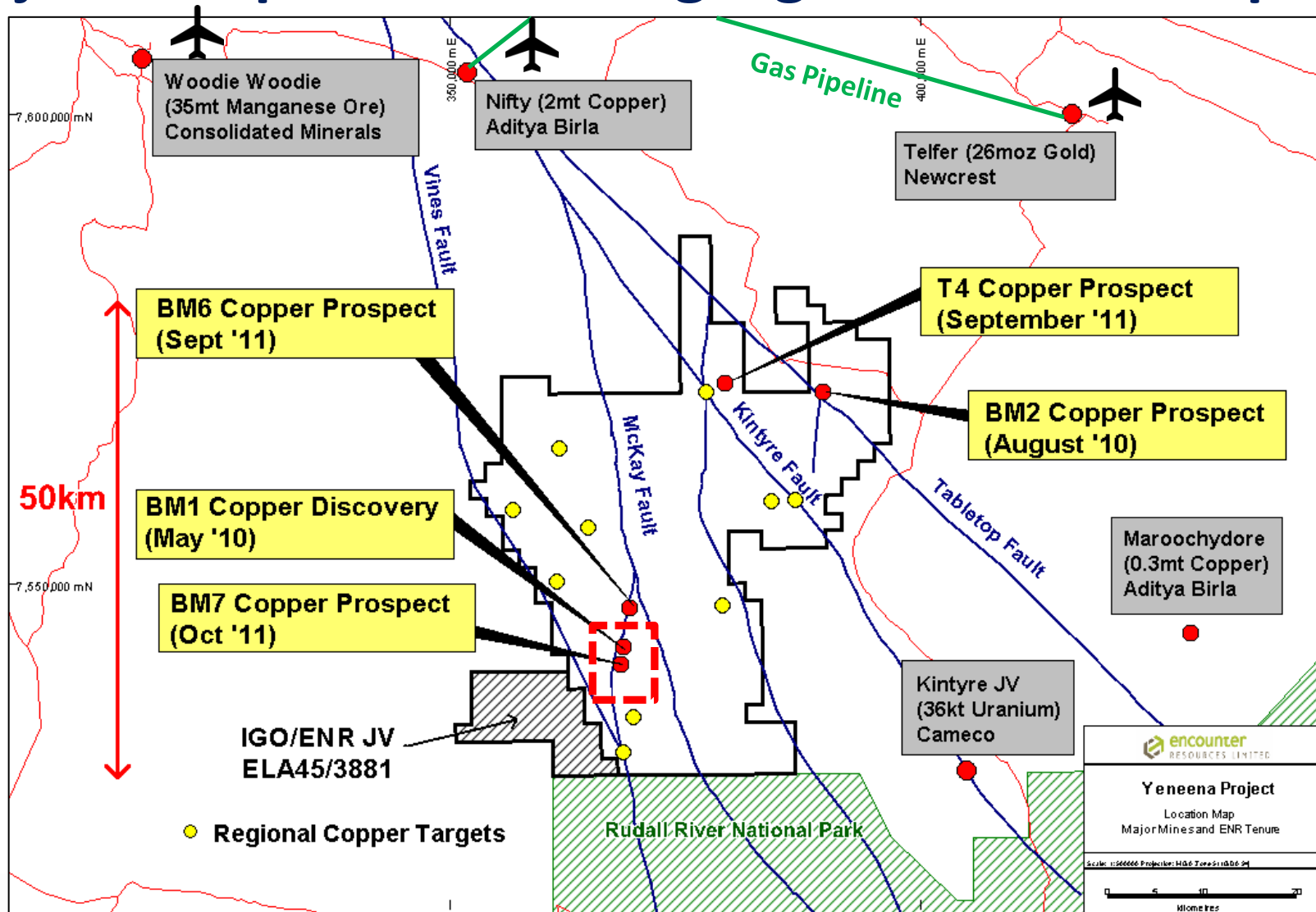
**Sand cover has inhibited previous exploration**



**encounter**  
RESOURCES LIMITED



# Major land position amongst giant mineral deposits



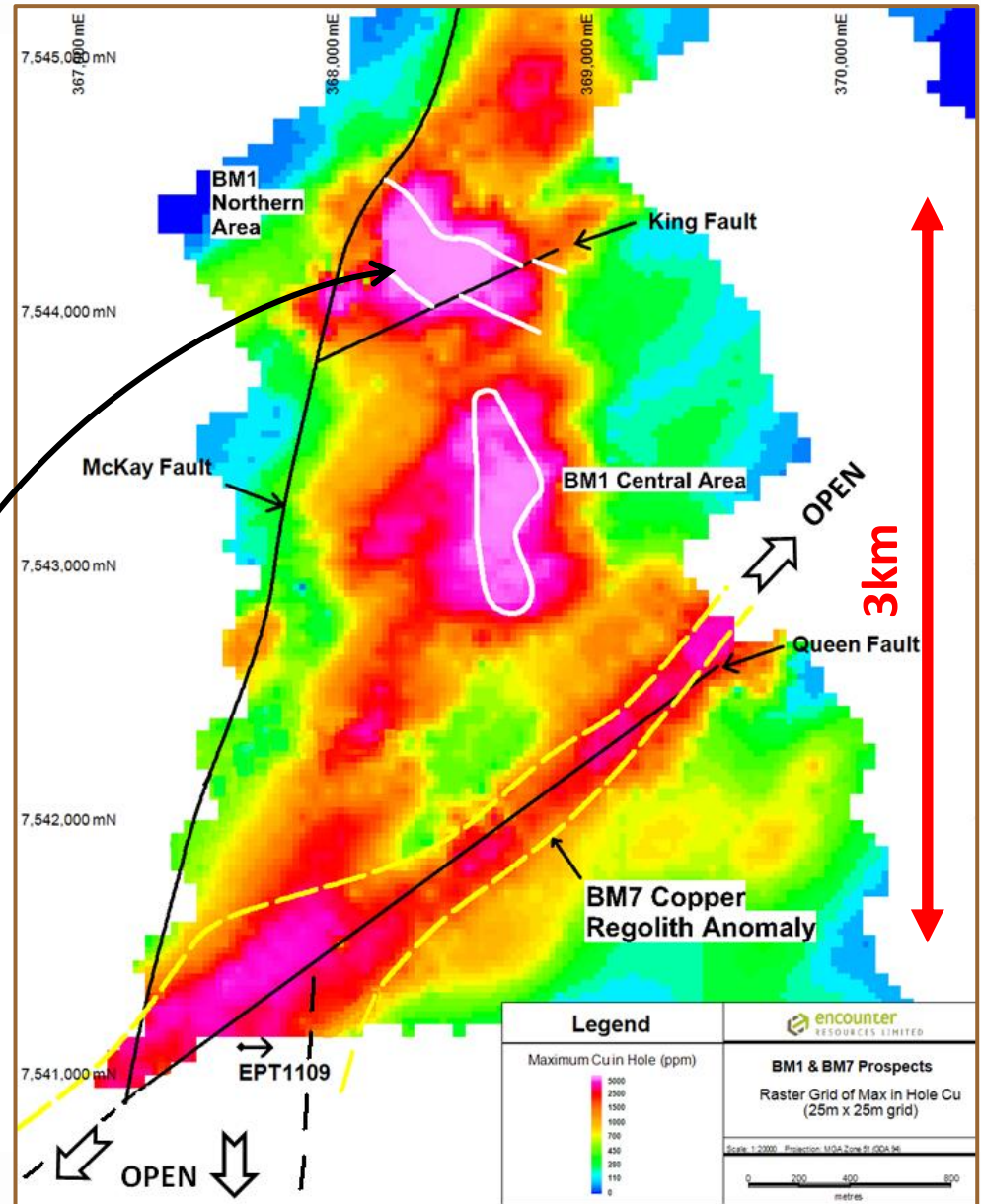
# BM1 - BM7 Prospects

*Copper system +8km long and open*

**BM1** - coherent zone of near surface copper oxide mineralisation

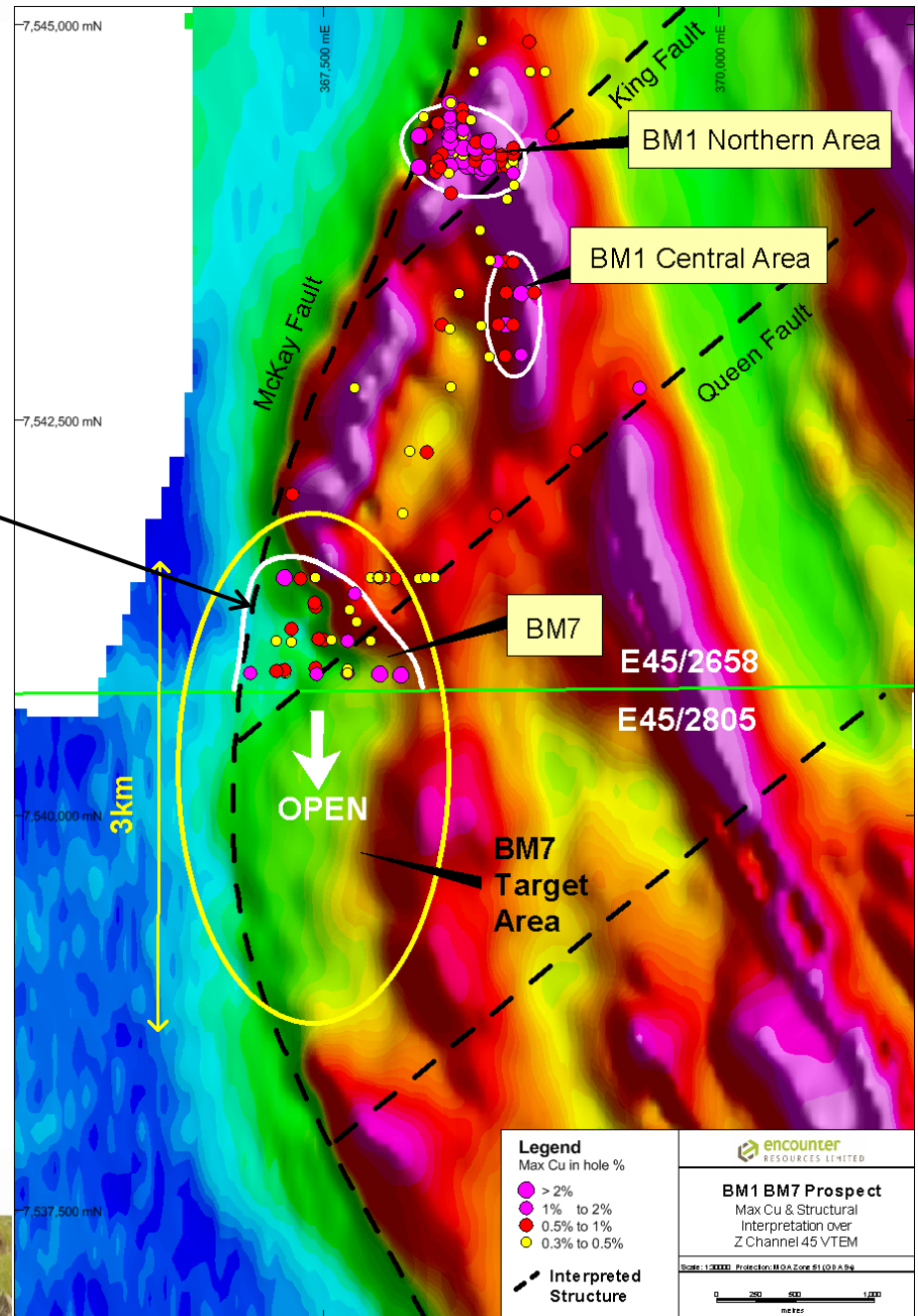
- 10m @ 6.8% Cu from 32m
- 20m @ 2.0% Cu from 22m
- 12m @ 1.5% Cu from 16m
- 8m @ 3.6% Cu from 18m
- 4m @ 5.5% Cu from 66m

**BM7** - New copper discovery 3km south of BM1



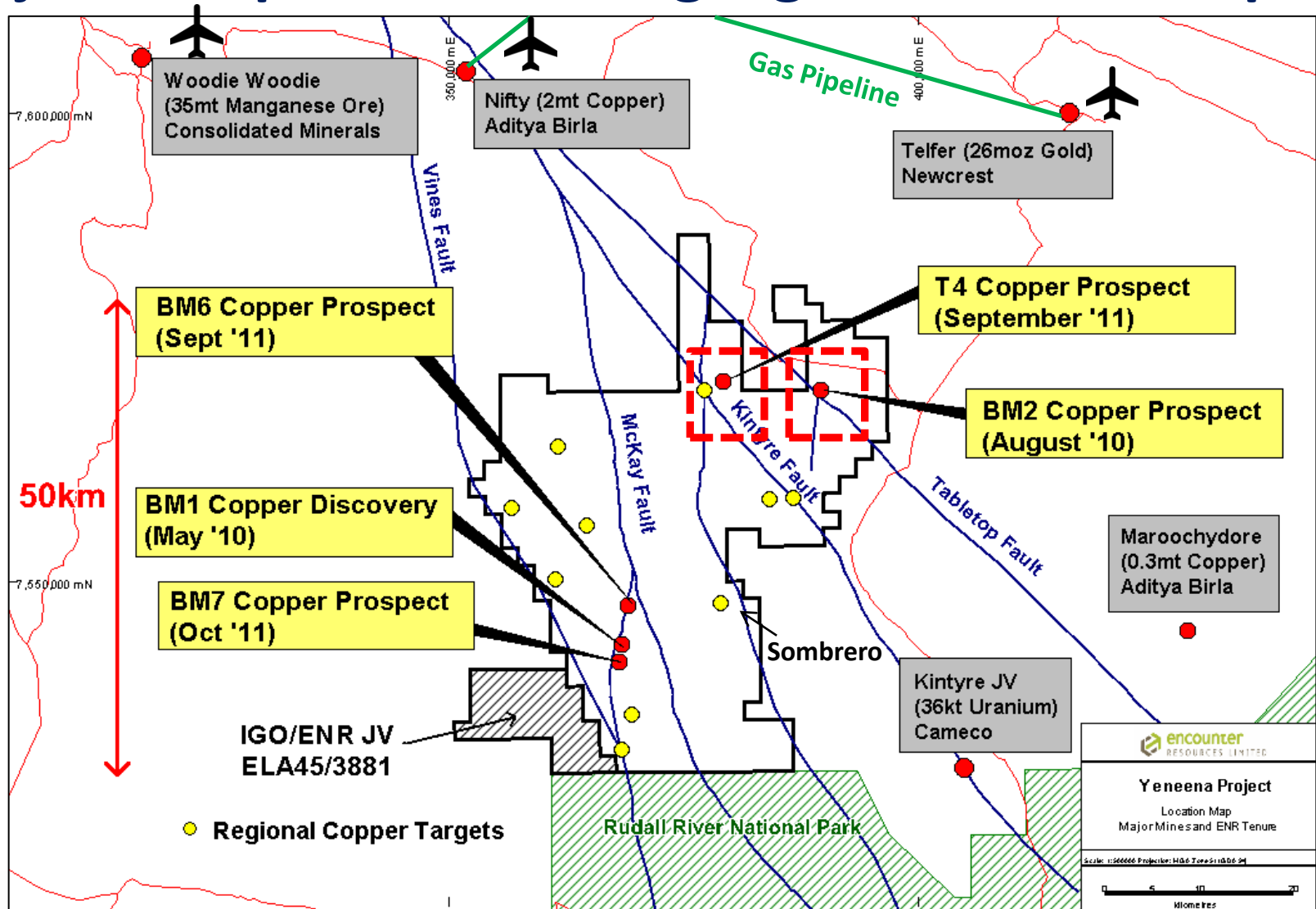
# BM7 Prospect

- New copper discovery located 3km south of the BM1 discovery.
  - 34m @ 0.6% Cu incl. 10m @ 1.6% Cu
  - 22m @ 0.4% Cu incl. 2m @ 2.9% Cu
  - 34m @ 0.5% Cu incl. 14m @ 0.8% Cu
  - 33m @ 0.4% Cu incl. 19m @ 0.5% Cu
  - 16m @ 0.4% Cu incl. 7m @ 0.7% Cu
- Mineral system widens and is strengthening to the south
- 3km long target zone coincident with a major flexure in the McKay Fault
- Hallmarks of major mineral system





# Major land position amongst giant mineral deposits









# Yeneena Project – T4 prospect



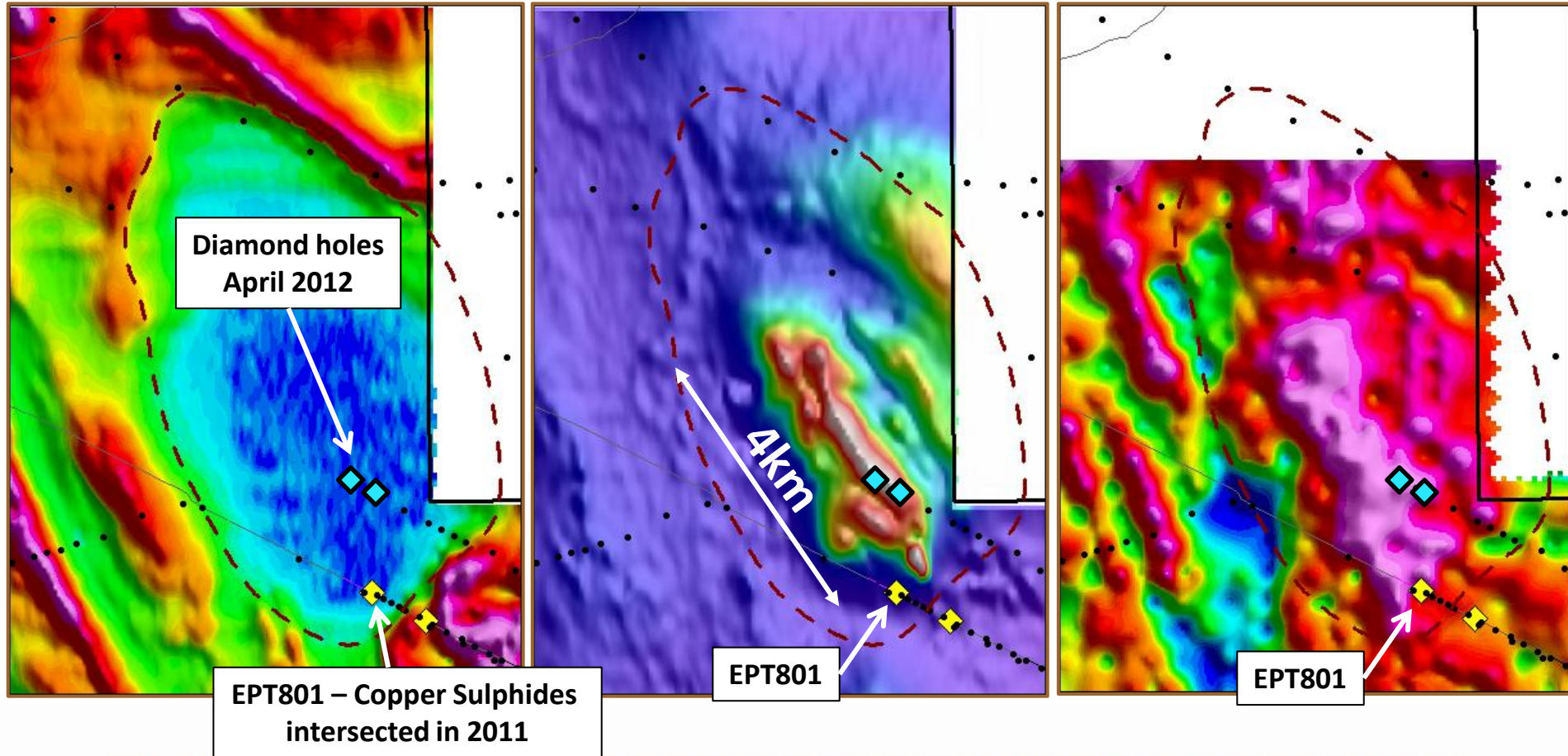


# T4 – Major Copper Prospect

## Electromagnetics

## Magnetics

## Gravity





# T4 Copper Prospect

- Stratigraphic hole EPT 801 intersected disseminated copper sulphides including 0.9m @ 0.84% Cu
- Drilling located at the southern end of a +4km long gravity & magnetic anomaly
- 5,700m track mounted aircore program completed August 2012
- Preliminary handheld XRF data identifies four corridors of copper anomalism adjacent to magnetic anomaly





# Yeneena Copper Discovery Timeline



**2008-09**

Airborne EM  
Regional geochem  
Target generation

○ **2010**

Greenfields  
copper oxide  
discoveries at  
BM1 & BM2



○ **2011**

Discovery of copper  
sulphides at BM1 & T4  
New copper oxide  
discoveries at BM6 &  
BM7  
Primary zinc discovered  
at BM2  
BM7 copper sulphides

○

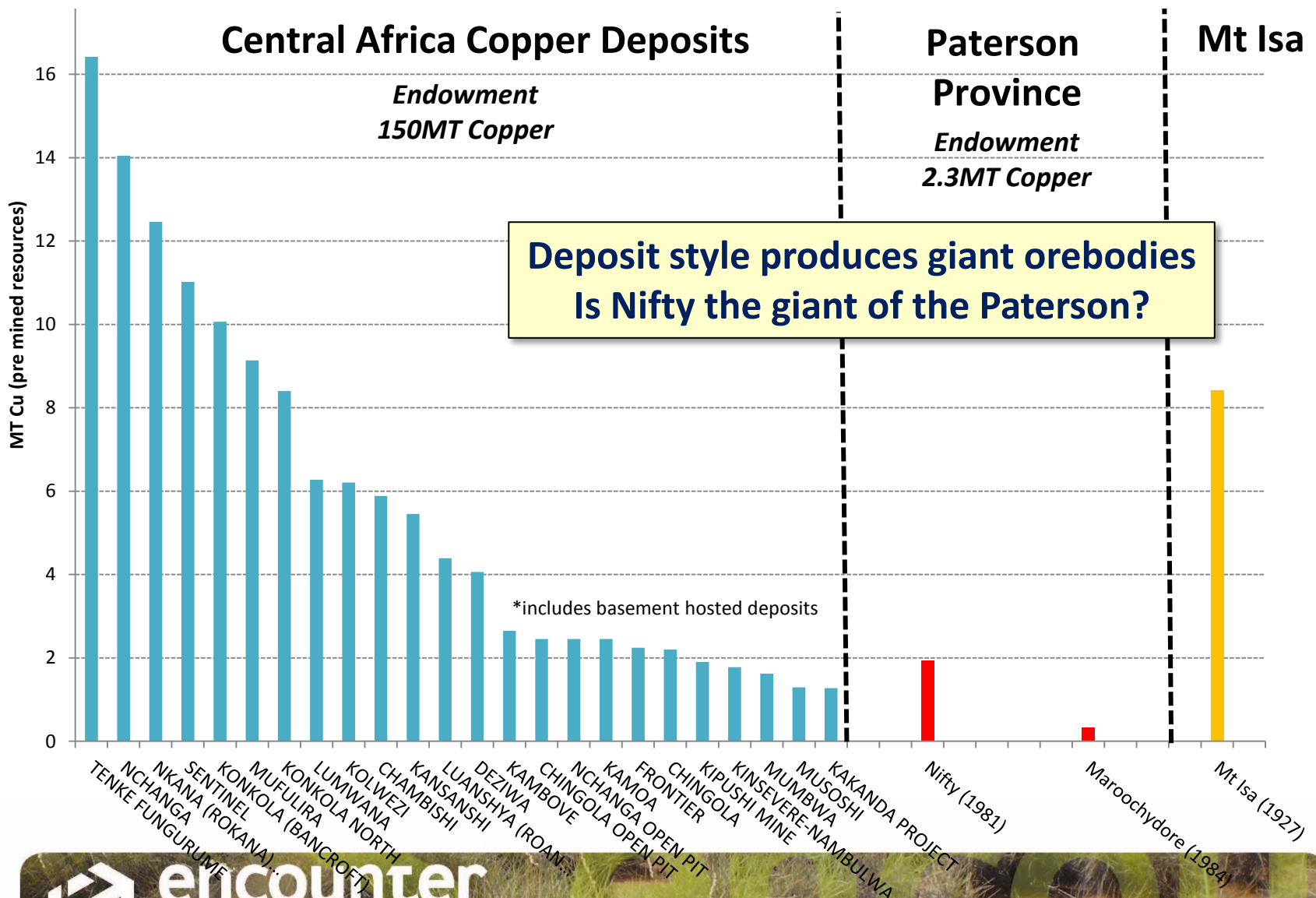
**2012 Objectives**

Large scale, high grade  
copper sulphide discovery  
at BM1, BM7  
Drill testing of large scale  
T4 copper prospect  
Follow up base metal  
discovery at BM2  
Regional target testing



**encounter**  
RESOURCES LIMITED

# Sediment Hosted Copper Deposits





# Yeneena Copper Discovery

- New greenfields copper discovery made in 2010
- Base metal sulphides discovered at four prospects in 2011
- Early stage indications of a potential new copper province
  - High drilling success rate
  - Large mineralisation footprints
  - Thick, high grade intersections
- Land position secured (1400km<sup>2</sup>, 100% owned)
- Well funded explorer with 25,000m drill program in 2012

# Disclaimer & Compliance Statement

This presentation has been prepared by Encounter Resources Limited (“Encounter”). The information contained in this presentation is a professional opinion only and is given in good faith. Certain information in this document has been derived from third parties and though Encounter has no reason to believe that it is not accurate, reliable or complete, it has not been independently audited or verified by Encounter.

Any forward-looking statements included in this document involve subjective judgement and analysis and are subject to uncertainties, risks and contingencies, many of which are outside the control of, and maybe unknown to Encounter. In particular, they speak only as of the date of this document, they assume the success of Encounter’s strategies, and they are subject to significant regulatory, business, competitive and economic uncertainties and risks. Actual future events may vary materially from the forward looking statements and the assumptions on which the forward looking statements are based. Recipients of this document (“Recipients”) are cautioned to not place undue reliance on such forward-looking statements.

Encounter makes no representation or warranty as to the accuracy, reliability or completeness of information in this document and does not take responsibility for updating any information or correcting any error or omission which may become apparent after this document has been issued.

To the extent permitted by law, Encounter and its officers, employees, related bodies corporate and agents (“Agents”) disclaim all liability, direct, indirect or consequential (and whether or not arising out of the negligence, default or lack of care of Encounter and/or any of its Agents) for any loss or damage suffered by a Recipient or other persons arising out of, or in connection with, any use or reliance on this presentation or information.

The information in this report that relates to Exploration Results is based on information compiled by Mr. Peter Bewick who is a Member of the Australasian Institute of Mining and Metallurgy. Mr. Bewick is a full time employee of Encounter Resources Ltd and has sufficient experience which is relevant to the style of mineralisation under consideration to qualify as a Competent Person as defined in the 2004 Edition of the 'Australian Code for Reporting of Exploration Results, Mineral Resources and Ore Reserves'. Mr. Bewick consents to the inclusion in the presentation of the matters based on his information in the form and context in which it appears.