

ASX : ENR

2 August 2013

Company Announcements Office
Australian Securities Exchange
4th Floor, 20 Bridge Street
Sydney NSW 2000

Investor Update Presentation

The attached presentation will be available at the company's booth and will be used during investor discussions at the Diggers and Dealers Mining Forum in Kalgoorlie 5-7 August 2013.



encounter
RESOURCES LIMITED

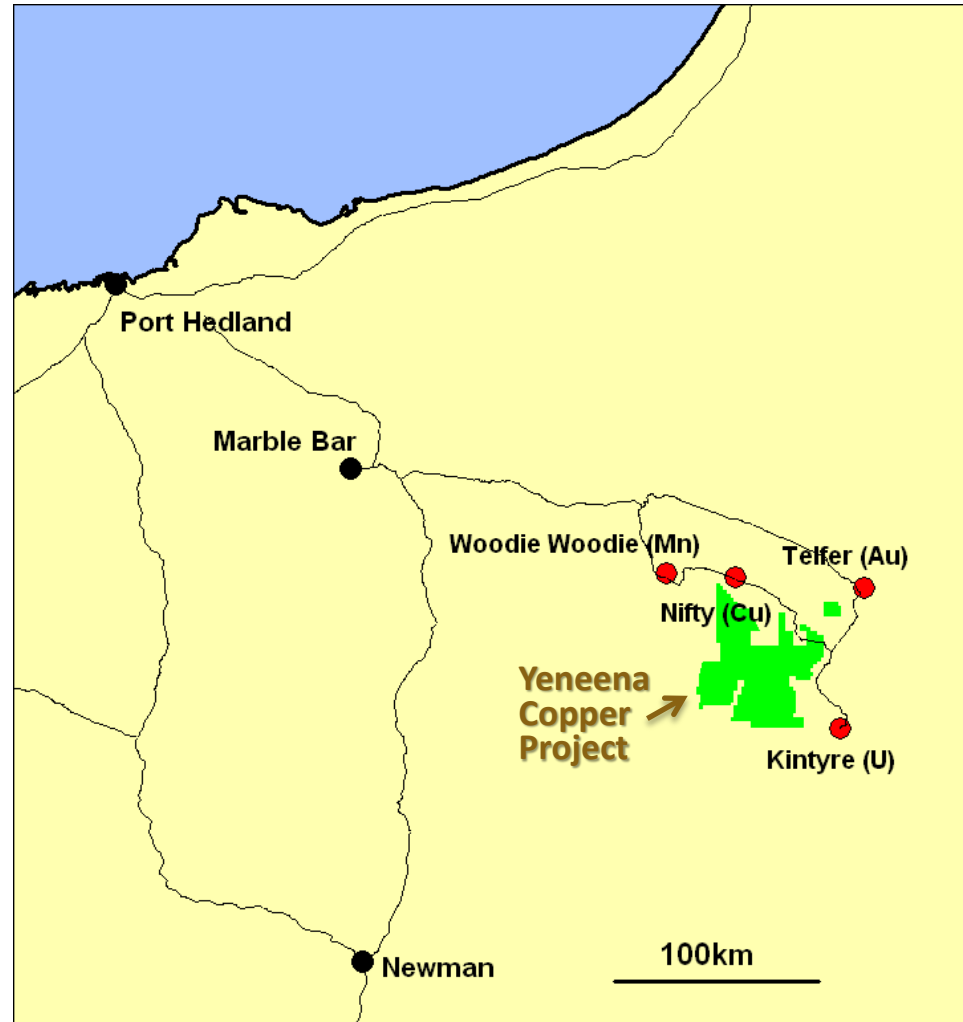
Investor Update

Diggers and Dealers - Kalgoorlie
5-7 August 2013

ASX : ENR

INVESTMENT SUMMARY

- Major land position in Proterozoic sedimentary basin (1900km²)
- Surrounded by major mineral deposits (Au-Cu, Cu, U and Mn)
- Greenfields copper discovery 11km long and growing
- Experienced team of former WMC executives
- Well funded explorer - US\$20m farm-in with Antofagasta (two tenements, 30% of Yeneena)



CORPORATE INFORMATION

Board



Paul Chapman - Chairman

Will Robinson - Managing Director

Peter Bewick - Exploration Director

Jon Hronsky - Non-Executive Director

Kevin Hart / Dan Travers - Company Sec.

Issued Capital

132.5m Ordinary Shares

9.5m Employee Options

Market Cap.

A\$33m @ A\$0.25/share

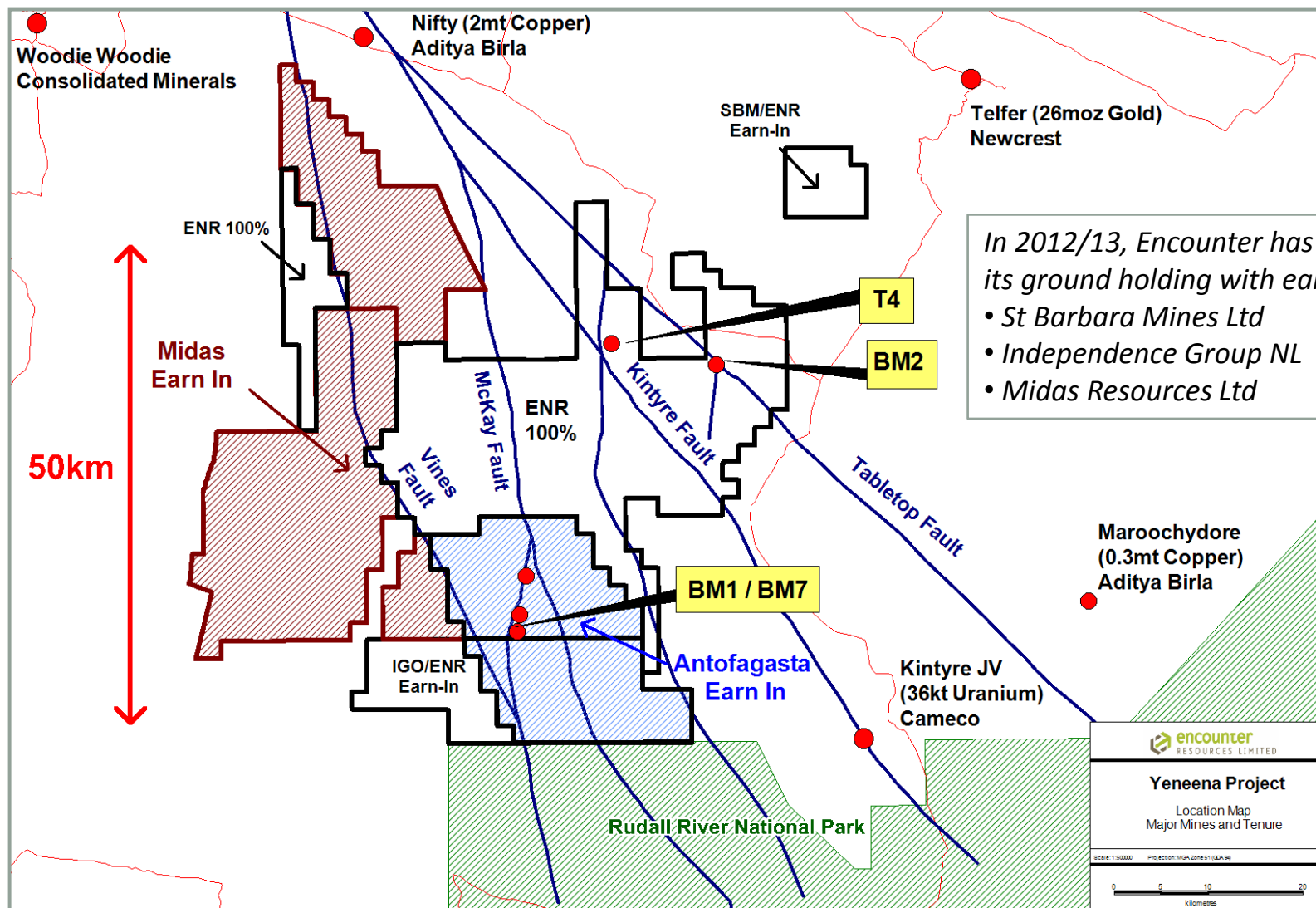
Cash

A\$4.8m (30 June 2013)



YENEENA PROJECT

Major land position amongst giant mineral deposits



YENEENA PROJECT



Sand cover has inhibited previous exploration



BM1 - BM7 PROSPECTS

Copper mineral system 11km long and growing

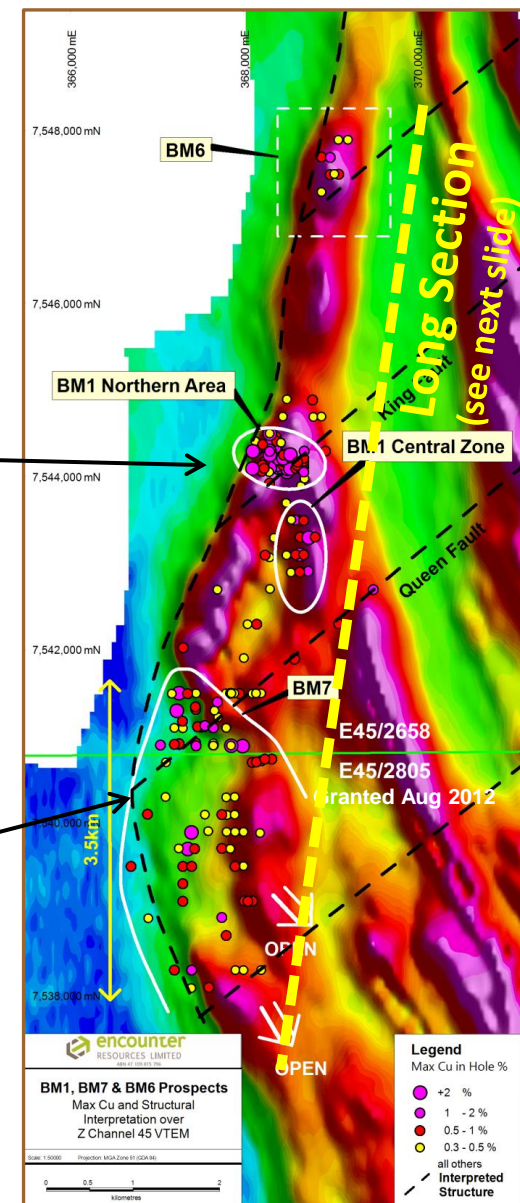
BM1 - coherent zone of near surface copper oxide mineralisation

- 10m @ 6.8% Cu from 32m
- 20m @ 2.0% Cu from 22m
- 8m @ 3.6% Cu from 18m
- 4m @ 5.5% Cu from 66m

BM7 - New copper discovery 3km south of BM1 in 2012

- 52m @ 0.6% Cu incl. 8m @ 2.0% Cu
- 9m @ 1.5% Cu, 1.0% Co to EOH
- 34m @ 0.6% Cu incl. 10m @ 1.6% Cu
- 73m @ 0.4% Cu incl. 8m @ 1.0% Cu
- 34m @ 0.5% Cu incl. 14m @ 0.8% Cu

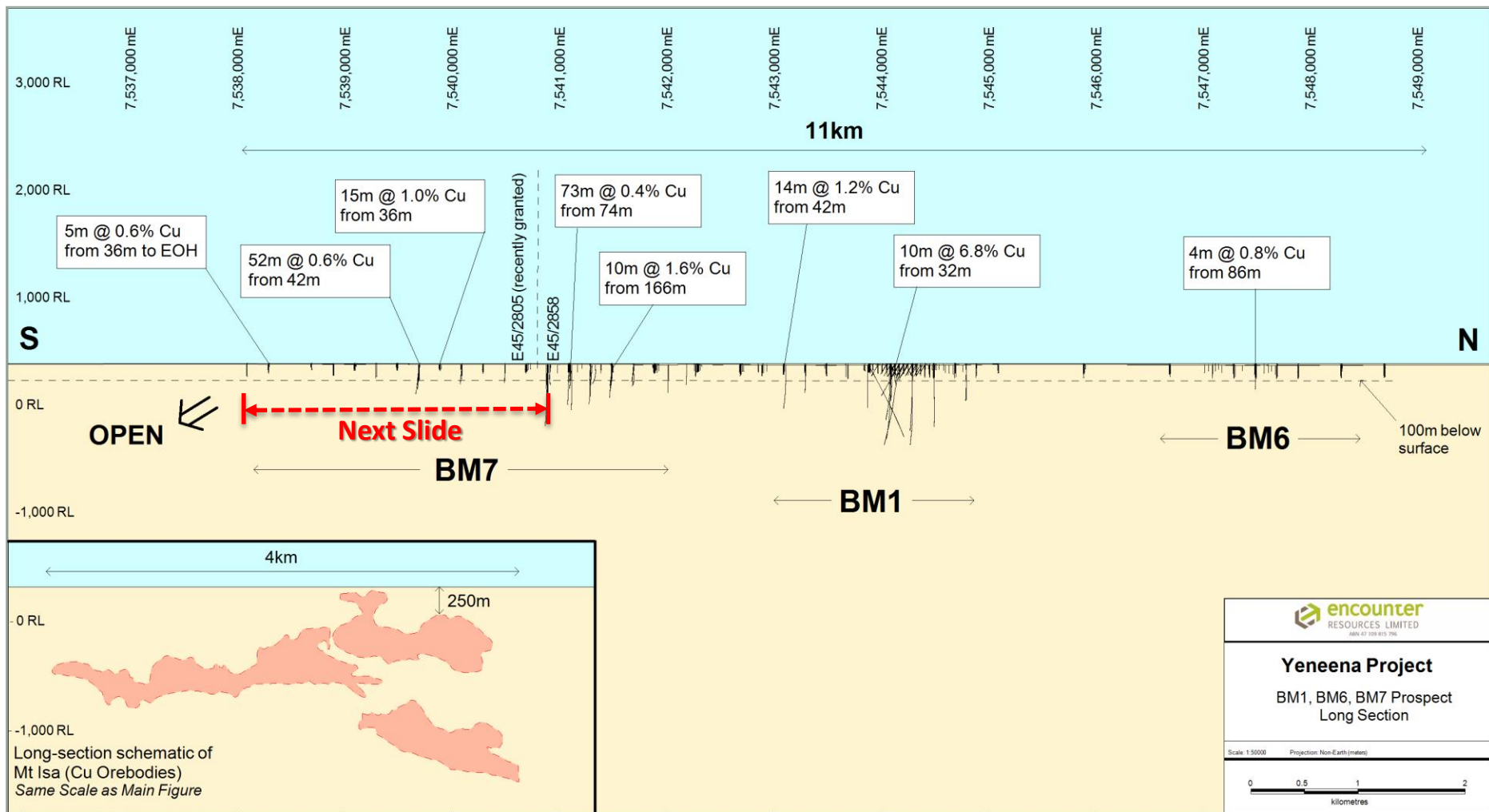
Antofagasta farming-in



LONG SECTION BM1-BM7



Shallow drilling defines major new Copper-Cobalt mineral system



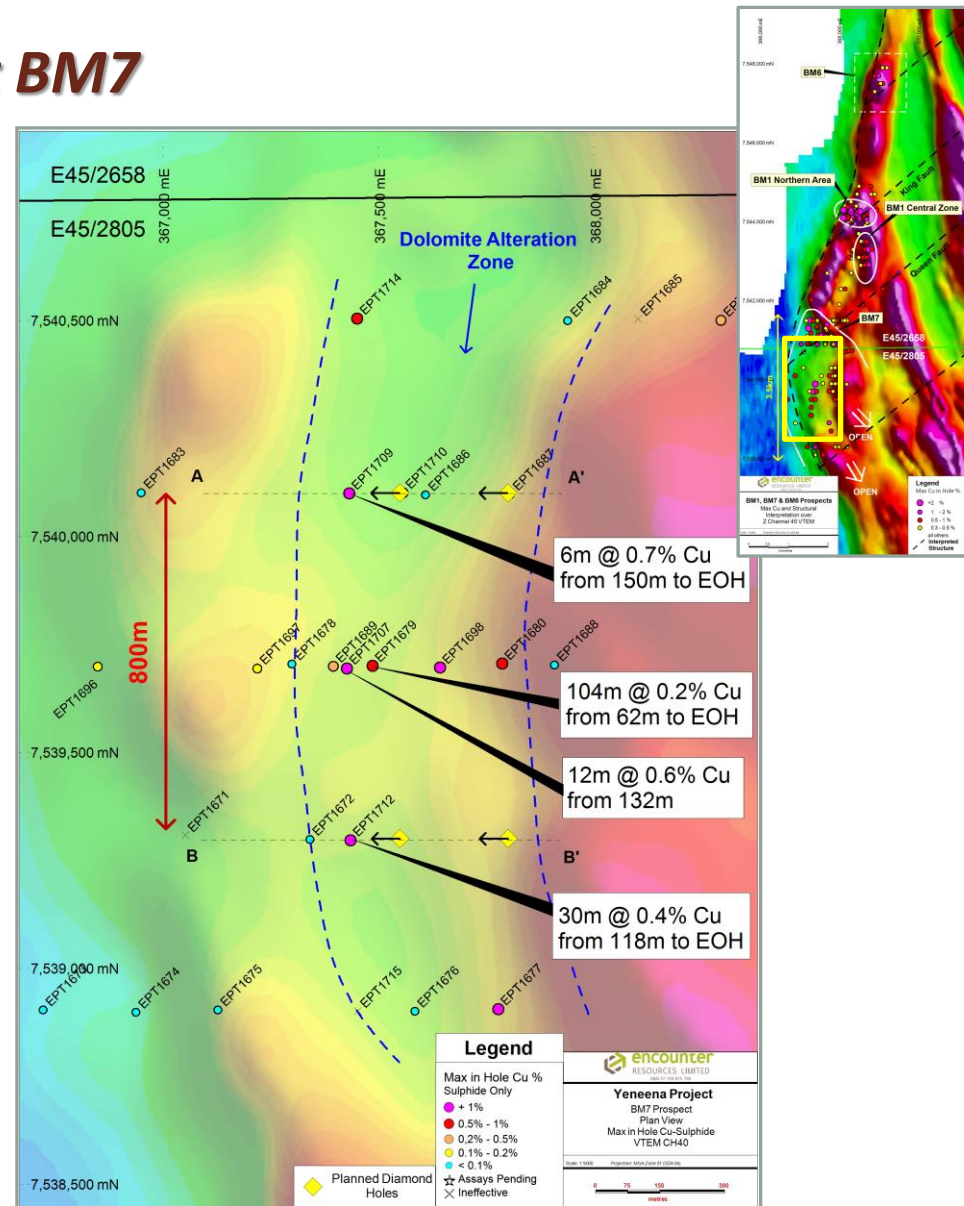
Antofagasta farming-in



BM7 PROSPECT

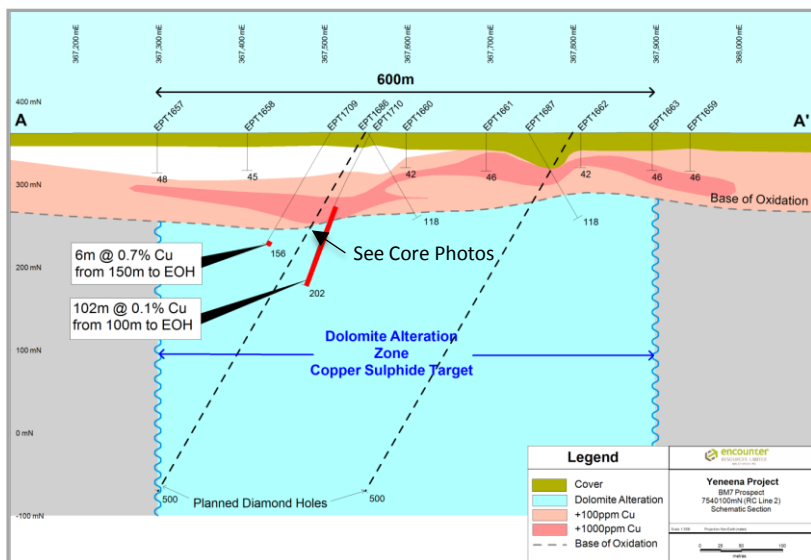
“End of Hole” Copper Sulphides at BM7

- Depth extensive copper sulphide mineralisation associated with large dolomite alteration zone
- +800m long zone of copper sulphide
- End of hole (EOH) primary copper in recent RC drill program:
 - 6m @ 0.7% Cu 150m to EOH
 - 30m @ 0.4% Cu 118m to EOH
- Copper sulphide zone remains open along strike and at depth
- Diamond drilling in progress

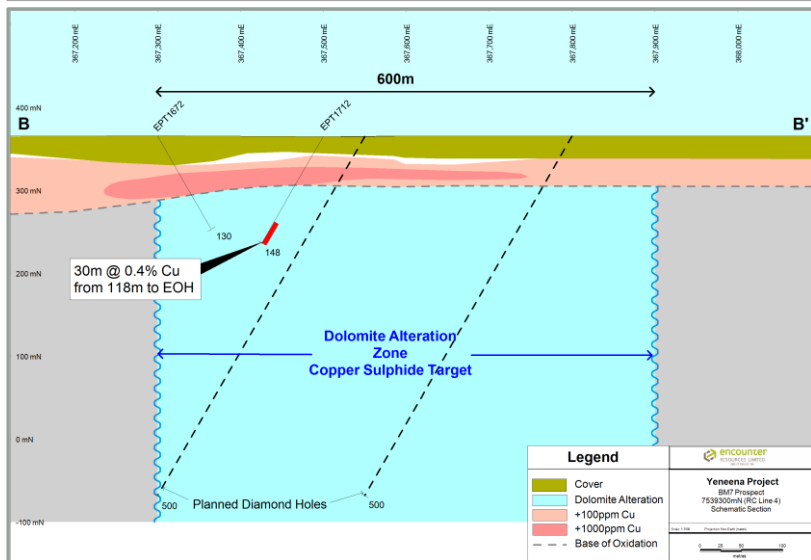


BM7 PROSPECT

Schematic cross-sections



EPT1716 – ~120m - Carbonate with dolomite blebs/veins containing chalcopyrite (HQ core width 60mm)



EPT1716 – ~120m - Carbonate with abundant coarse pyrite and with chalcopyrite intergrowths

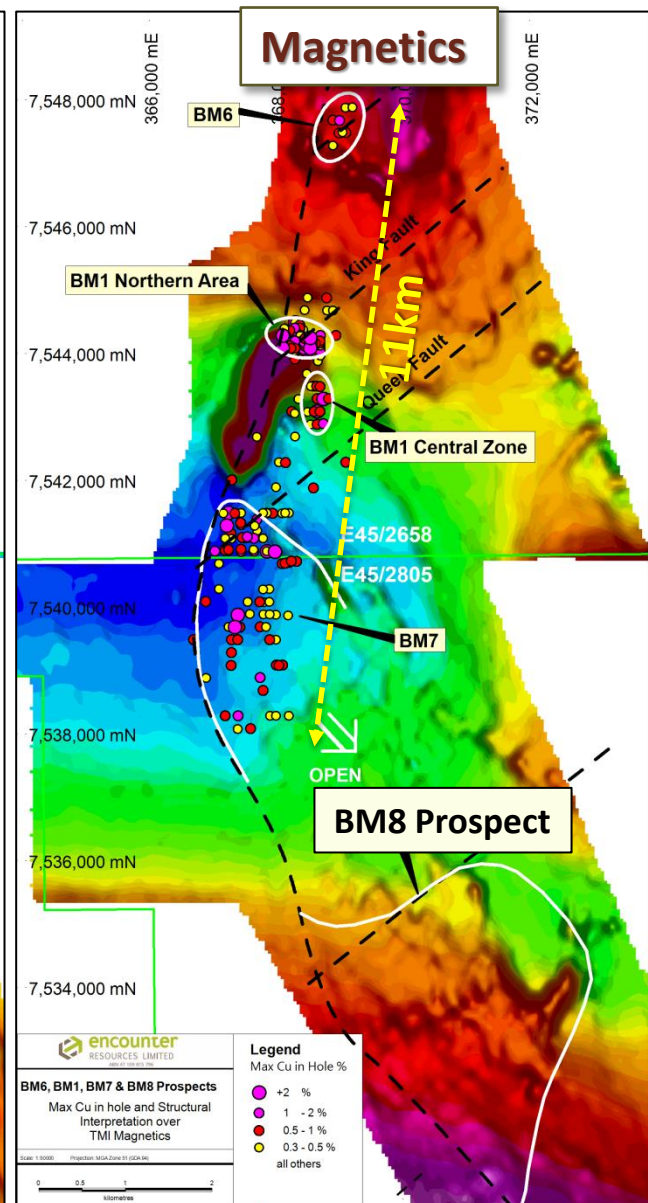
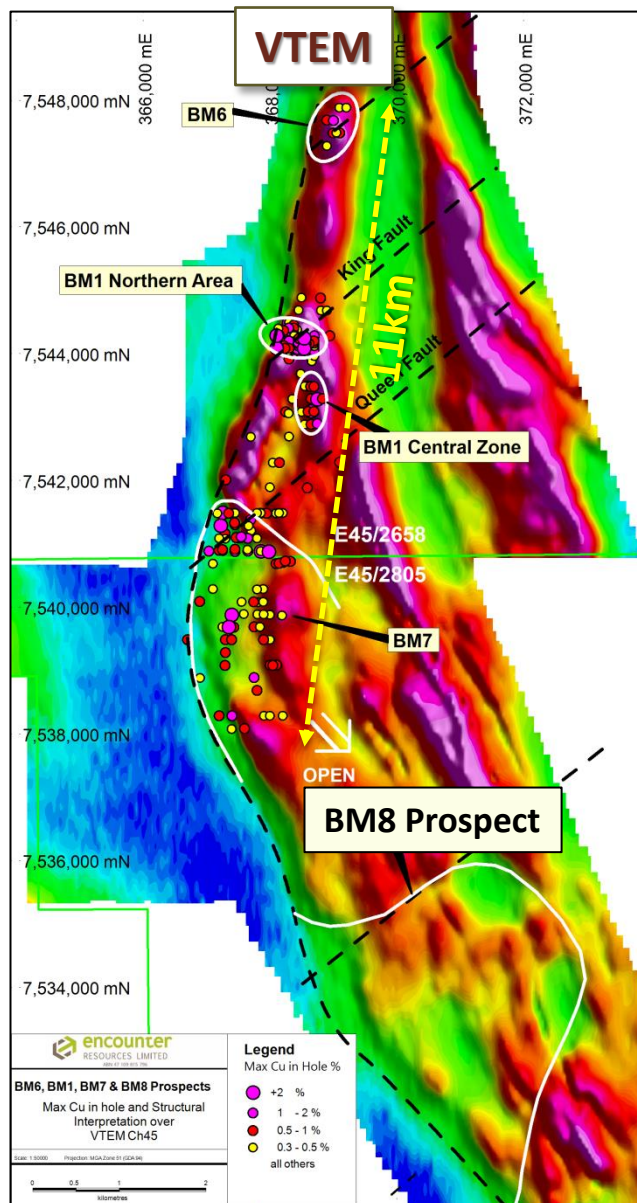
EPT1716 is the first of four diamond holes to be drilled in the current campaign at BM7. The core photos are within a zone between 104m and 124m where visible copper sulphides including chalcocite, bornite and chalcopyrite have been identified. The photos are from the visually strongest mineralised interval within that zone between 104m and 124m. Drill hole EPT1716 is still in progress. Samples will be dispatched for laboratory analysis upon completion of the hole.



REGIONAL TARGETS - SOUTH

Untested targets south of 11km system at BM8

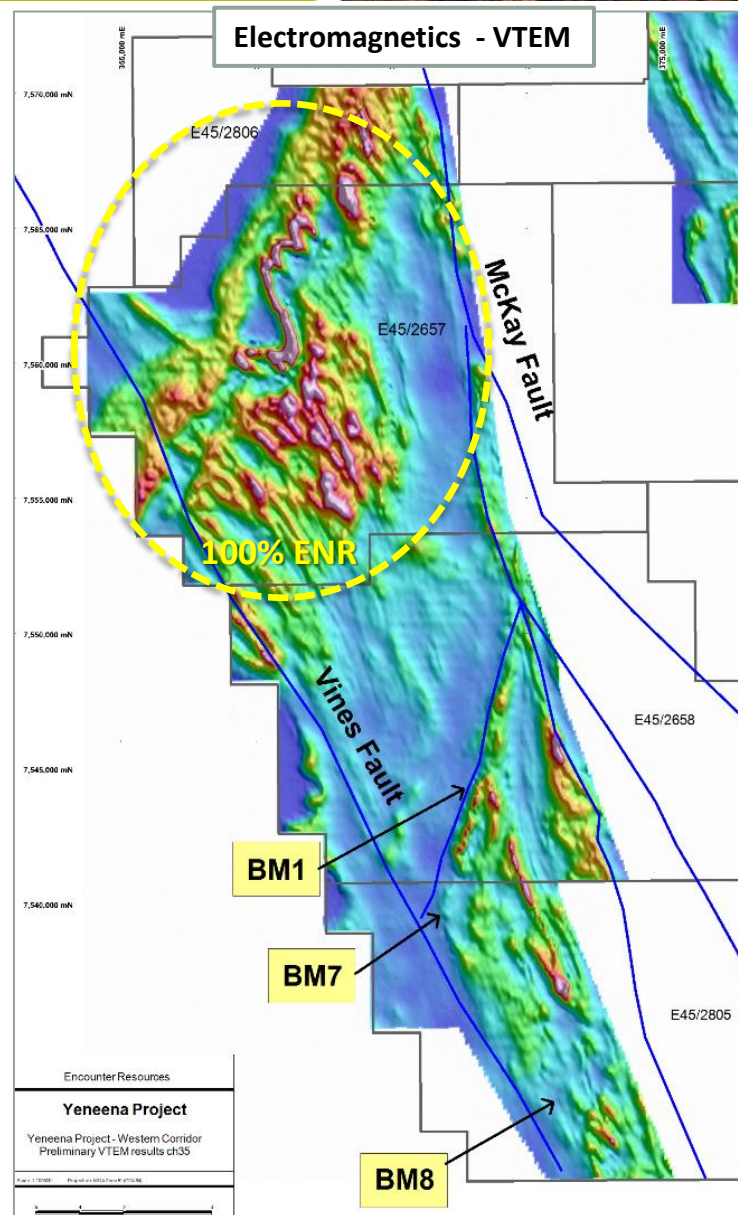
- Coincident magnetic & EM anomaly
- Large scale alteration anomaly
- No previous exploration
- Exploration funded through Antofagasta farm-in



REGIONAL TARGETS - NORTH

Untested targets north of BM1-BM7

- Significant north-east trending structure that mirrors the BM1-BM7 copper system
- Key structural targets identified
- Shallow sand cover
- Minimal previous exploration – a handful of RAB holes
- 100% Encounter held ground
- VTEM Survey completed June 2013



DISCOVERY TIMELINE



2008-09

Airborne EM
Regional geochem
Target generation

2010

Greenfields copper
oxide discoveries at
BM1

2011

Discovery of copper
sulphides at BM1

New copper oxide
discoveries at BM6 & BM7

First BM7 copper sulphides

2012

Large scale, copper
discovery at BM7

Regional copper
targets defined

2013 Objectives

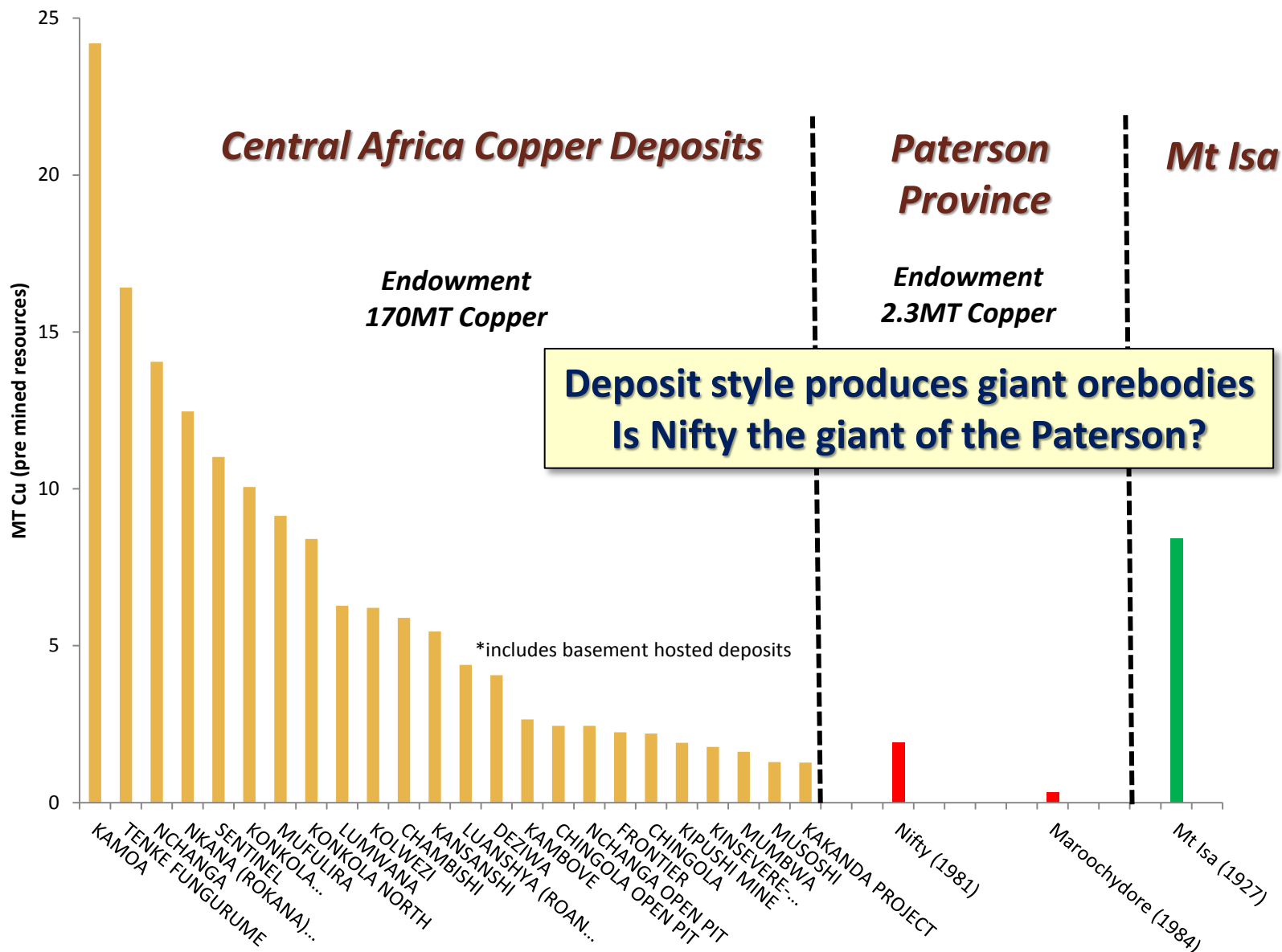
High grade copper
sulphides at BM7
Test targets south
and east of BM7

Test Regional Targets
(100% ENR)

Anto.
Farm-in



SEDIMENT HOSTED COPPER



Yeneena – Australia's Next Great Copper District?

- *Large scale system over 11km long and growing*
- *High grade near surface intersections*
- *Key ground position secured (>1900km²)*
- *First world mining jurisdiction*
- *Major mining company funding through Antofagasta farm-in*
- *Sound cash position*
- *Diamond drilling in progress*



Disclaimer & Compliance Statement

This presentation has been prepared by Encounter Resources Limited (“Encounter”). The information contained in this presentation is a professional opinion only and is given in good faith. Certain information in this document has been derived from third parties and though Encounter has no reason to believe that it is not accurate, reliable or complete, it has not been independently audited or verified by Encounter.

Any forward-looking statements included in this document involve subjective judgement and analysis and are subject to uncertainties, risks and contingencies, many of which are outside the control of, and maybe unknown to Encounter. In particular, they speak only as of the date of this document, they assume the success of Encounter’s strategies, and they are subject to significant regulatory, business, competitive and economic uncertainties and risks. Actual future events may vary materially from the forward looking statements and the assumptions on which the forward looking statements are based. Recipients of this document (“Recipients”) are cautioned to not place undue reliance on such forward-looking statements.

Encounter makes no representation or warranty as to the accuracy, reliability or completeness of information in this document and does not take responsibility for updating any information or correcting any error or omission which may become apparent after this document has been issued.

To the extent permitted by law, Encounter and its officers, employees, related bodies corporate and agents (“Agents”) disclaim all liability, direct, indirect or consequential (and whether or not arising out of the negligence, default or lack of care of Encounter and/or any of its Agents) for any loss or damage suffered by a Recipient or other persons arising out of, or in connection with, any use or reliance on this presentation or information.

The information in this report that relates to Exploration Results is based on information compiled by Mr. Peter Bewick who is a Member of the Australasian Institute of Mining and Metallurgy. Mr. Bewick is a full time employee of Encounter Resources Ltd and has sufficient experience which is relevant to the style of mineralisation under consideration to qualify as a Competent Person as defined in the 2004 Edition of the 'Australian Code for Reporting of Exploration Results, Mineral Resources and Ore Reserves'. Mr. Bewick consents to the inclusion in the presentation of the matters based on his information in the form and context in which it appears.

