



RIU Explorers Conference

Fremantle, February 2018

ASX: ENR



Disclaimer and Compliance Statement

This presentation has been prepared by Encounter Resources Limited (“Encounter”). The information contained in this presentation is a professional opinion only and is given in good faith. Certain information in this document has been derived from third parties and though Encounter has no reason to believe that it is not accurate, reliable or complete, it has not been independently audited or verified by Encounter.

Any forward-looking statements included in this document involve subjective judgement and analysis and are subject to uncertainties, risks and contingencies, many of which are outside the control of, and maybe unknown to Encounter. In particular, they speak only as of the date of this document, they assume the success of Encounter’s strategies, and they are subject to significant regulatory, business, competitive and economic uncertainties and risks. Actual future events may vary materially from the forward looking statements and the assumptions on which the forward looking statements are based. Recipients of this document (“Recipients”) are cautioned to not place undue reliance on such forward-looking statements.

Encounter makes no representation or warranty as to the accuracy, reliability or completeness of information in this document and does not take responsibility for updating any information or correcting any error or omission which may become apparent after this document has been issued.

To the extent permitted by law, Encounter and its officers, employees, related bodies corporate and agents (“Agents”) disclaim all liability, direct, indirect or consequential (and whether or not arising out of the negligence, default or lack of care of Encounter and/or any of its Agents) for any loss or damage suffered by a Recipient or other persons arising out of, or in connection with, any use or reliance on this presentation or information.

Certain exploration drilling results for BM1, BM2 and BM7 are first disclosed under JORC code 2004. It has not been updated since to comply with the JORC code 2012 on the basis that the information has not materially changed.

The information in this report that relates to Exploration Results is based on information compiled by Mr. Peter Bewick who is a Member of the Australasian Institute of Mining and Metallurgy. Mr. Bewick is a full time employee of Encounter Resources Ltd and has sufficient experience which is relevant to the style of mineralisation under consideration to qualify as a Competent Person as defined in the 2004 Edition of the 'Australian Code for Reporting of Exploration Results, Mineral Resources and Ore Reserves'. Mr. Bewick consents to the inclusion in the presentation of the matters based on his information in the form and context in which it appears.

The Company confirms that it is not aware of any new information or data that materially affects the information in the relevant ASX releases and the form and context of the announcement has not materially changed.

Encounter at a Glance

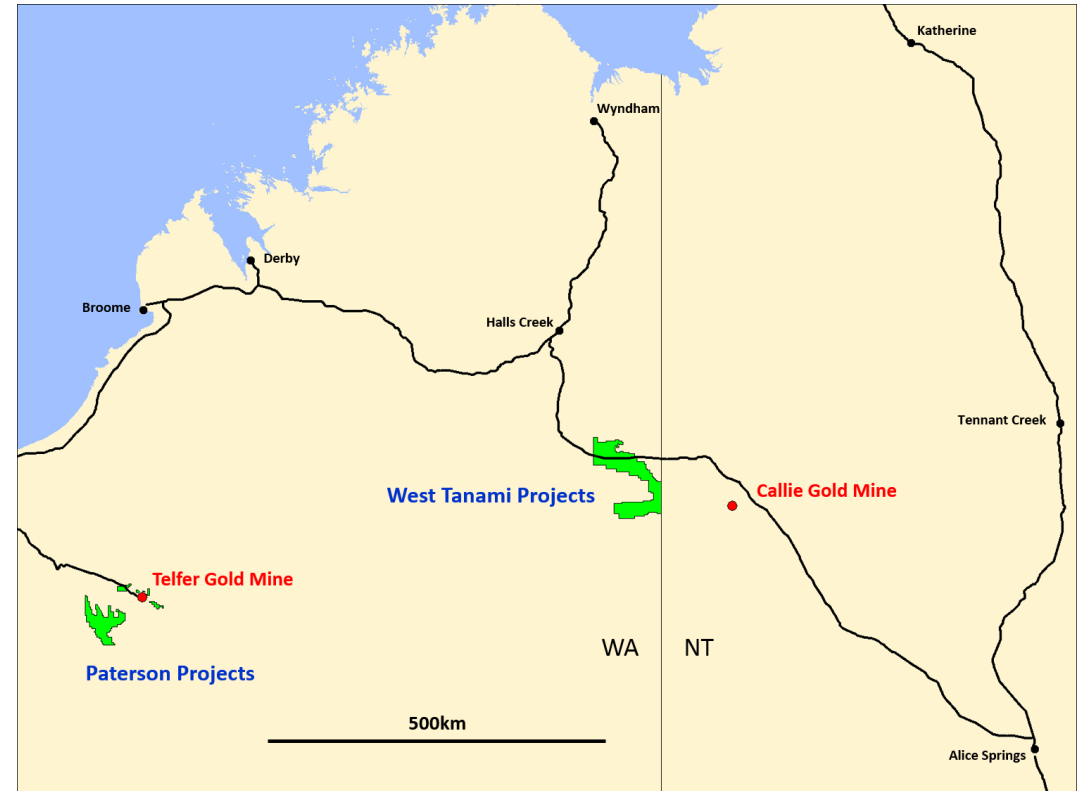
Creating Value Through Discovery

- Targeting shallow gold deposits with scale potential in two of Australia's most prospective districts: Telfer and West Tanami
- Additional large prospective landholding in the Paterson Province over 70km of strike in a proven copper-cobalt district
- Project generation alliance with Australia's largest gold mining company, Newcrest Mining Limited (ASX:NCM)
- Applying cutting edge science and exploration methods

Capital Structure

ASX ticker	ENR
Share price (20/02/2018)	A\$0.065
Shares on issue	192M
Options	12.4M
Market capitalisation (20/02/2018)	A\$12.5M
Cash (31/12/2017)	A\$1.3M
Listed investments (20/02/2018)	A\$1.3M
RCF, Acorn, Thorney, Eye Management	20%
Directors and Management	19%
Antofagasta	5%

Gold & Copper-Cobalt in Western Australia



Board and Management

Paul Chapman	Non-Executive Chairman
Will Robinson	Managing Director
Peter Bewick	Exploration Director
Dr Jon Hronsky	Non-Executive Director

Scale Opportunities in a First World Jurisdiction

Paterson Province Gold

New discoveries near the 30 million oz giant at Telfer

West Tanami Gold

District scale opportunity in one of the world's most prospective gold regions

Project Generation Alliance with Newcrest (ASX:NCM)

Targeting leverage to Tier 1 deposits in WA

Paterson Province - Copper-Cobalt

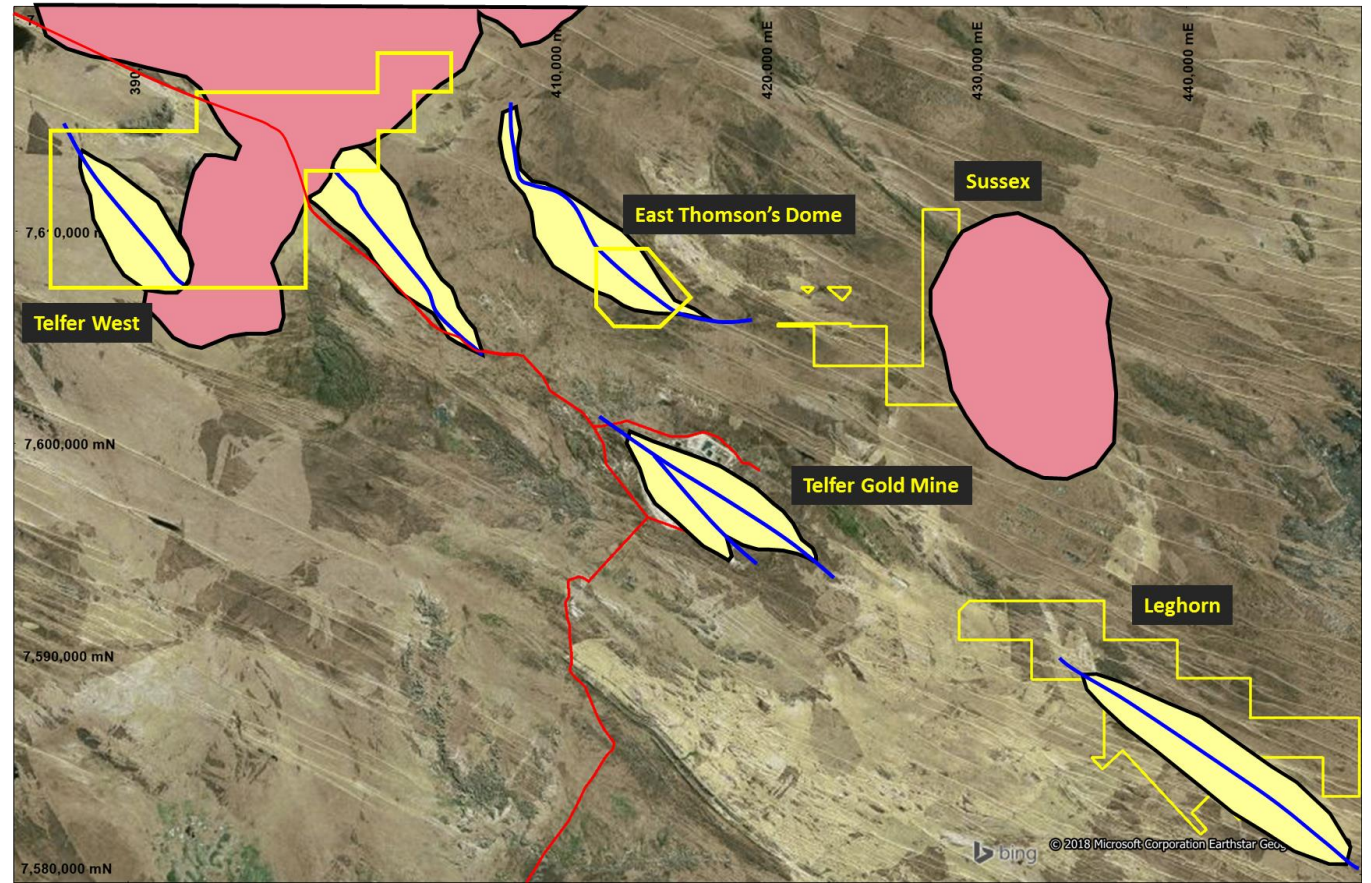
*Large prospective landholding
Met testing of copper-cobalt oxide zone*

GOLD



Targeting Mineralised Domes in the Shadow of a Giant

- Utilising modern technology in known mineral provinces to generate superior shareholder returns
- Why we have focused on the Paterson Province?
 - ❖ Proven fertility to produce major deposits
 - ❖ Large outcropping discoveries made in 1970-80's (Nifty & Telfer)
 - ❖ Shallow sand cover inhibited previous explorers
 - ❖ Applying modern undercover exploration techniques - Biogeochem, CSIRO Ultrafine Fraction Soil, Drone mapping, VTEM
- Well funded majors & explorers aggressively exploring the Paterson Province

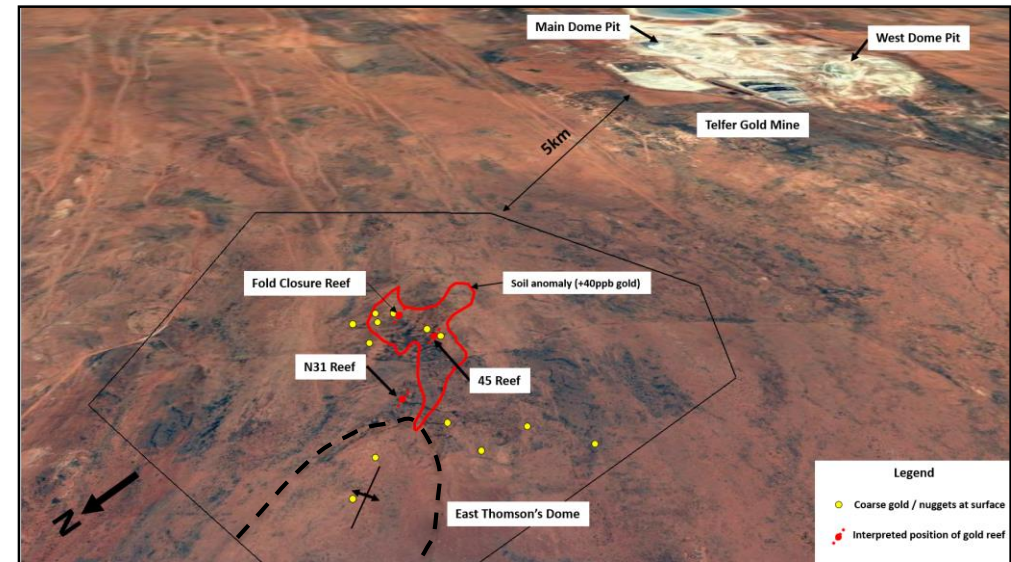


Shallow High Grade Gold Reefs at East Thomson's Dome

- Shallow gold opportunities with scale potential in a prolific gold district
- Significant and valuable established infrastructure allows efficient exploration and commercialisation options for discoveries of various scale
- Limited historical drilling and modern exploration techniques present an significant opportunity
- Widespread coarse gold identified across the East Thomson's Dome associated with multiple known gold bearing reefs



**3oz nugget recovered
Nov 2017**

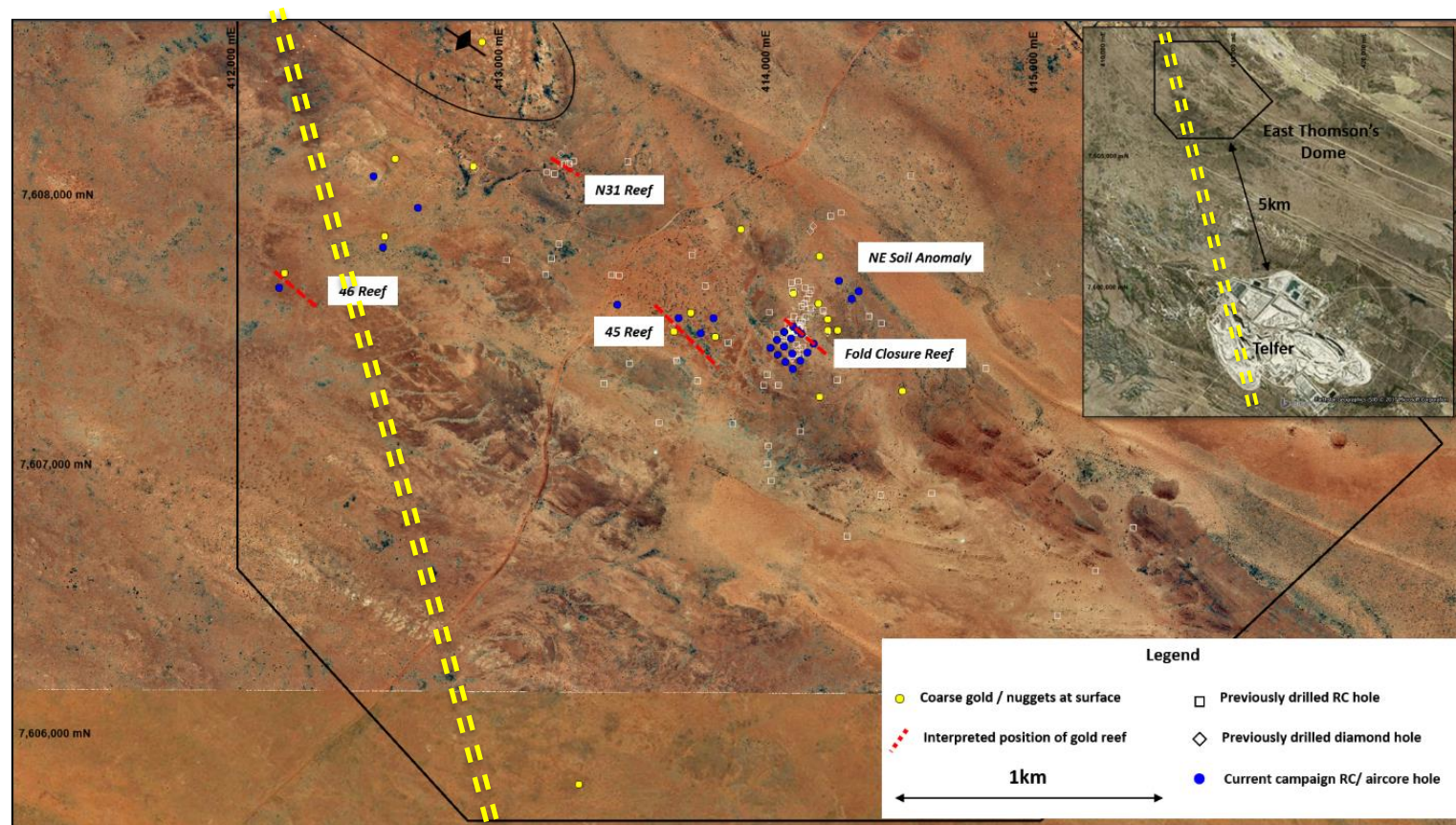


**Gold nuggets from around the
45 Reef area are generally larger
and rounded**

**Coarse gold from the Fold Closure
smaller and generally sharp edged,
crystalline**

East Thomson's Drill Program Completed Late 2017

- First order structural target with strong similarities to Telfer
- Drilled near surface gold reefs that remain open including:
 - 45 Reef
 - ❖ 6m @ 9g/t Au from 178m
 - Fold Closure Reef
 - ❖ 2.9m @ 7.7g/t Au from 127m to EOH
 - ❖ 26.6m @ 1.0g/t Au from 4.2m
 - ❖ 6m @ 2.7g/t Au from 39m
 - ❖ 4m @ 4.3g/t Au from 0m
 - ❖ 4m @ 3.5g/t Au from 17m
 - NE Soil Anomaly
 - ❖ 38m @ 0.3g/t Au from 44m
- Gravity lineament provides important structural context for recent coarse gold identified 46 Reef



Upcoming Activity East Thomson's Dome

- Ultra-detailed airborne mapping survey utilising drone technology working well and identifying:
 - ❖ Extensions to known gold bearing reefs
 - ❖ New sub-cropping reefs in areas of thin sand cover
- Reefs to be mapped, rock chip sampled and metal detected
- RC/aircore drilling scheduled to recommence March/April 2018



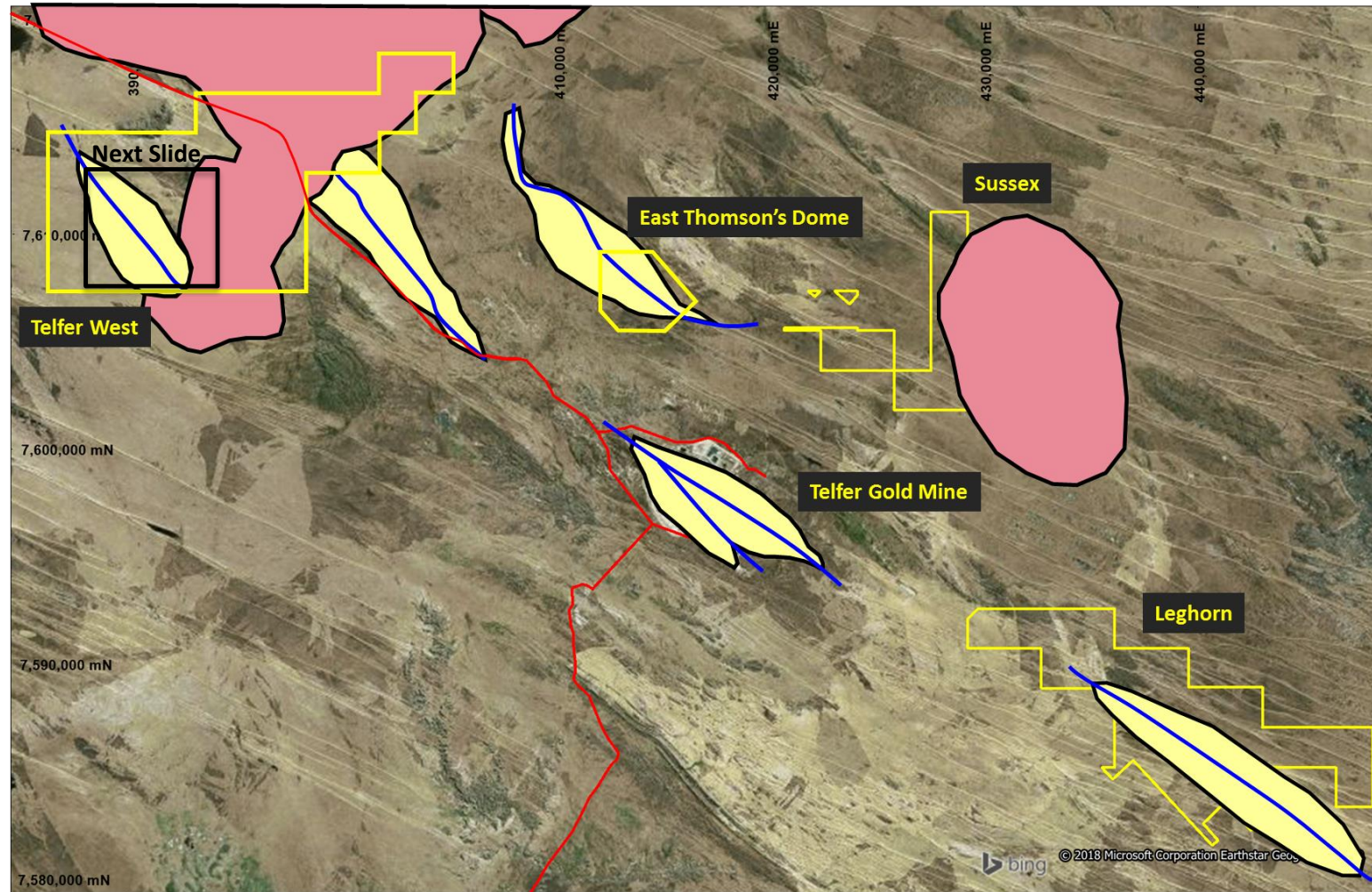
Ultra-detailed Aerial Mapping program East Thomson's Dome – Dec 17



Surface samples collected on the N31 Reef in Oct 2017

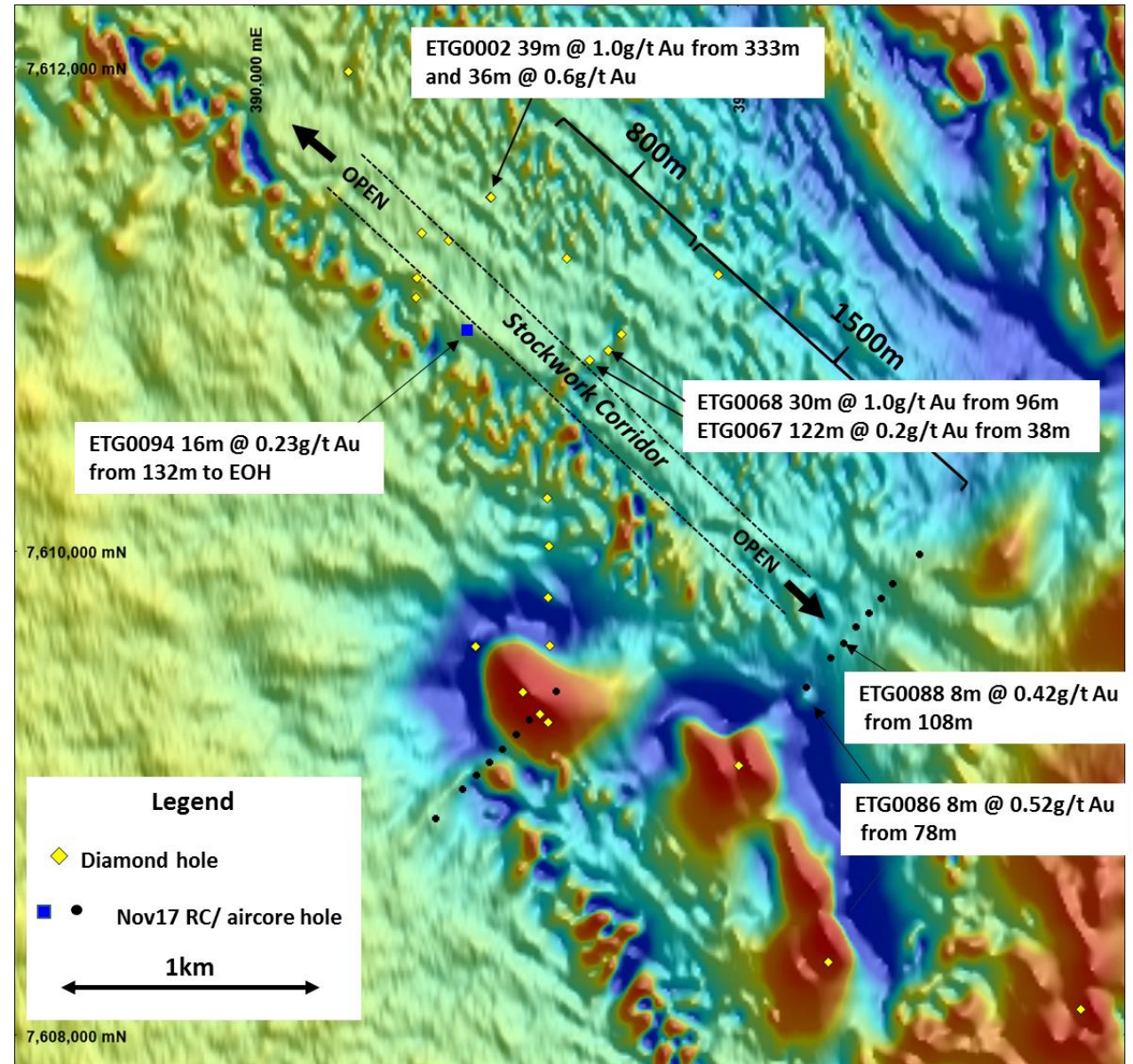
Large Scale Gold System at Telfer West

- Acquired in 2014 based on structural setting
- Newmont shallow drilling in the 1980s:
 - ❖ 17 diamond holes completed between 1986 and 1991 (average depth ~100m)
 - ❖ Dome (5km x 8km) of prospective stratigraphy similar to the host units at Telfer
- No exploration for 25 years

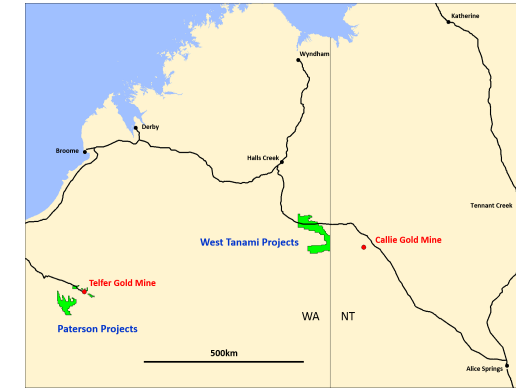
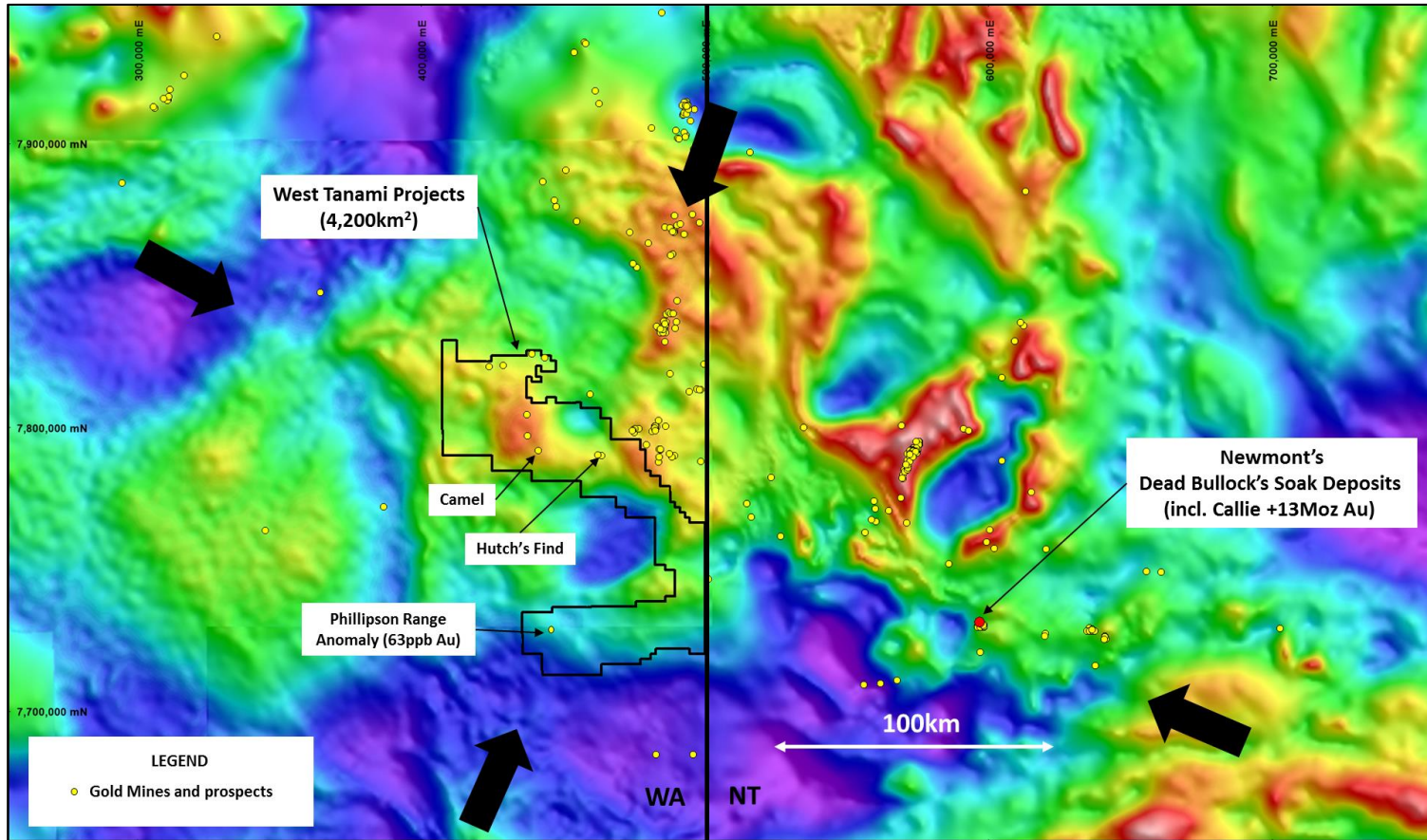


Telfer West Gold Stockwork Corridor Extended by 1.5km

- Broad, depth extensive, zone of stockwork style gold mineralisation:
 - ❖ 38.6m @ 1.0g/t Au from 333m (incl. 4.2m @ 3.2g/t Au from 333.5m) and
 - ❖ 36m @ 0.6g/t Au from 396m (incl. 3.2m @ 3.3g/t Au from 415.2m)
 - ❖ 30m at 1.1g/t Au from 96m
- Thick mineralised package may extend to surface and is open along strike and at depth
- Aircore in late 2017 has extended the stockwork gold corridor by a 1.5km to the southeast
- 5km long gold mineralised stockwork corridor
- Targeting high grade shoots within this extensively mineralised unit



West Tanami – Highly Prospective Land Package Secured

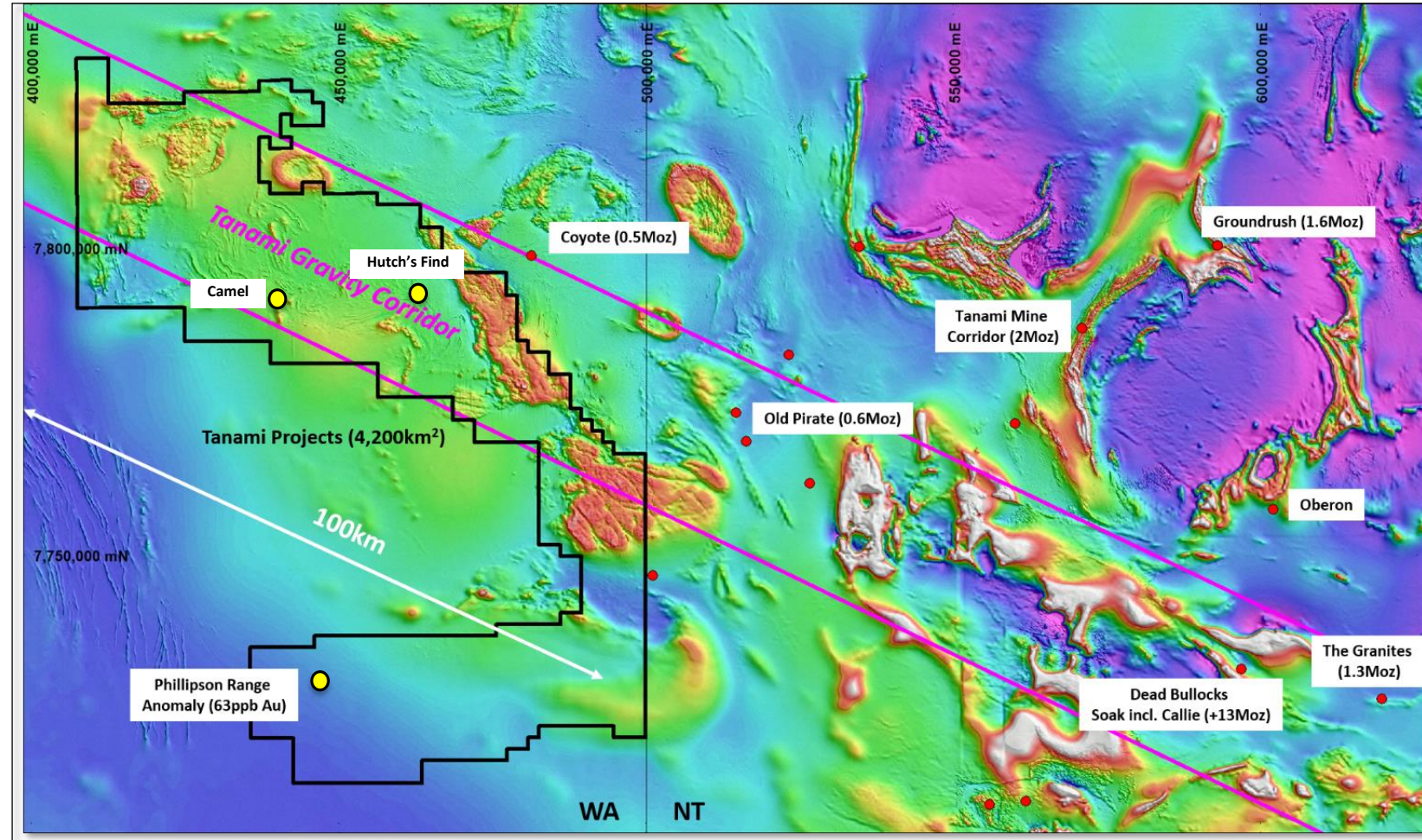


- 100km of strike of the major structural corridor that extends through the Tanami
- New regional gravity data outlined a fundamental controlling structure for gold mineralisation
- Material new near mine gold discoveries at Newmont's +13Moz Callie gold mine
- Sporadic historical exploration has produced high grade drill intersections

West Tanami – High Grade, Near Surface Gold Intersections

- Limited historical exploration has produced high grade, near surface drill intersections:
- **Hutch's Find** – (HFDD4 - hole depth 184m)
 - ❖ 19m @ 2.3g/t Au from 98m and
 - ❖ 10m @ 5.4 g/t Au from 123m and
 - ❖ 0.5m @ 17.2g/t Au from 164.3m
- **Camel** – (CMDD2 hole depth 149.6m)
 - ❖ 7.2m @ 3.1g/t Au from 95m
- **Phillipson Range**

Peak gold soil anomaly of 63ppb Au in a 5x5km GSWA auger sampling survey. This standout gold anomaly in occurs in an area of no previous exploration.

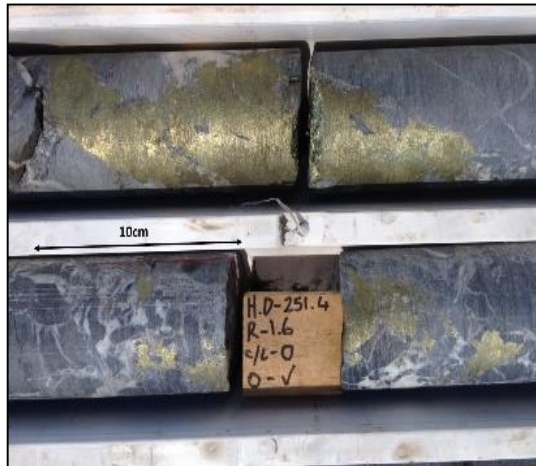


Encounter – Newcrest Project Generation Alliance

- Project generation alliance with Australia’s largest gold mining company, Newcrest Mining Limited (ASX:NCM)
- Newcrest will fund Encounter up to A\$500,000 over 12 months to generate new ‘camp scale’ exploration opportunities in northern WA
- Key terms of the alliance include:
 - ❖ 50:50 joint venture over any approved projects
 - ❖ Newcrest may increase its interest to 80% by **sole funding exploration** and delivering a JORC compliant resource >1 Million oz gold or gold equivalent.
 - ❖ Should the alliance elect not to proceed with a project then it will revert back to Encounter 100%
- Targeting work continuing and initial projects have begun assessment by Newcrest to enter 50:50 joint venture phase

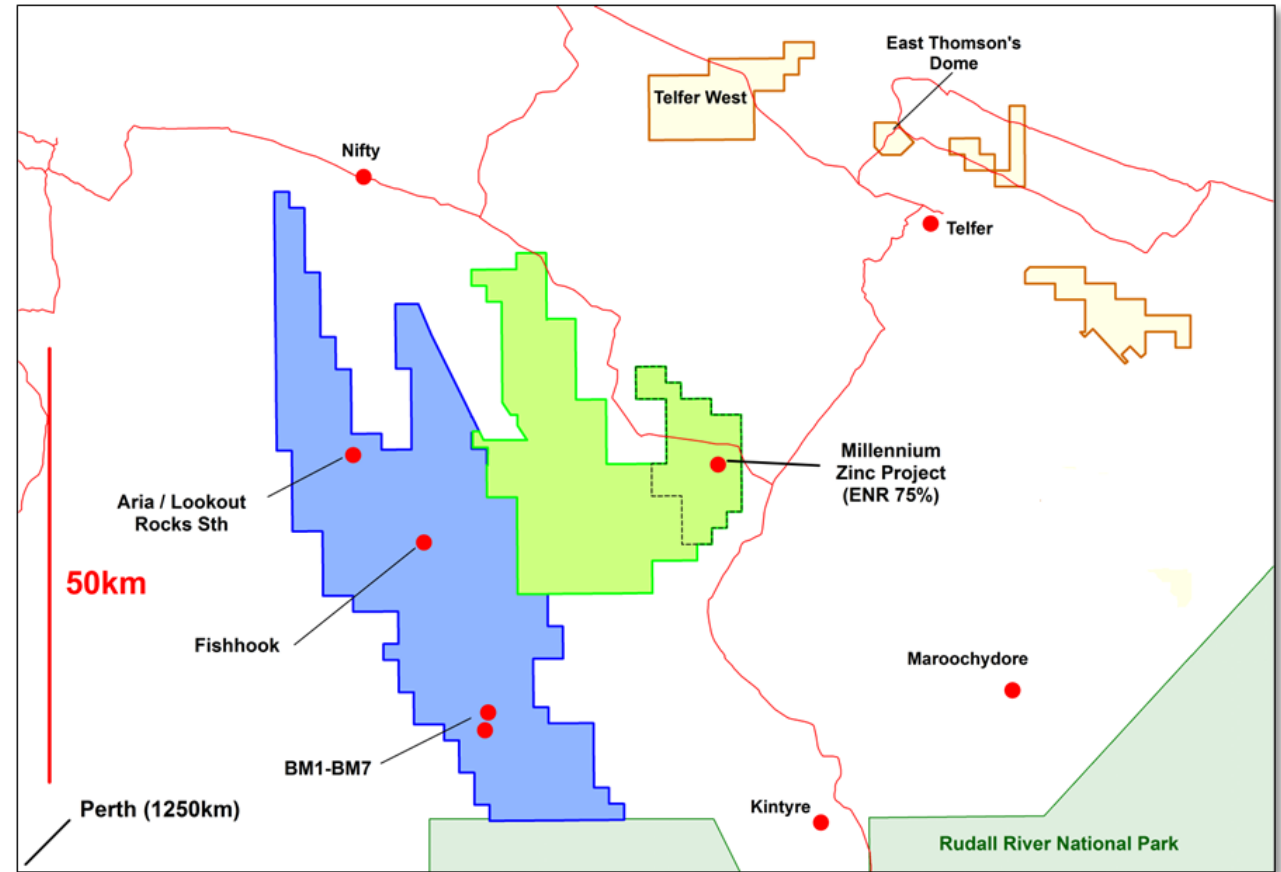


COPPER COBALT



70km Copper-Cobalt Corridor South of Nifty

- Proterozoic aged, sediment hosted deposits in the Central African Copperbelt are one of the world's largest sources of copper and the world's largest source of cobalt
- Similar age and geological setting has been defined in the Yeneena Basin in WA
- Proof of concept though drilling results
- Large landholding at key structural location
- Multiple mineralisation styles discovered highlighting regional potential
- High grade copper-cobalt intersections



Upcoming Copper-Cobalt Activity

14km long copper-cobalt system at BM1-BM7

- Coherent zone of copper oxide mineralisation:
 - ❖ 10m @ 6.8% Cu from 32m*
 - ❖ 20m @ 2.0% Cu from 22m*
 - ❖ 8m @ 3.6% Cu from 18m*
 - ❖ 16m @ 3.2% Cu from 26m
 - ❖ 50m @ 1.1% Cu from 12m
- Several **high grade cobalt** intersections:
 - ❖ 14m @ 0.5% Co and 0.4% Cu from 14m
 - ❖ 5m @ 0.2% Co and 2.2% Cu from 4m
 - ❖ 9m @ 1.0% Co and 1.5% Cu from 42m to EOH
- **Initial GlyLeach™ alkaline test work on copper-cobalt oxide zone in progress**
- Potential for an expedited, low capex production pathway



Lookout Rocks South

- First diamond drill hole (EPT2282) intersected copper mineralisation, up to 1% Cu
- **Zambian copper-belt analogous**
- 80m long in-situ gossan (grading up to 0.22% Cu & 0.19% Co) located 800m SW of EPT2282
- Drilling scheduled for Apr-May 2018



Why Encounter?

- ✓ Active explorer in two of Australia's most prospective yet underexplored Gold districts
 - Targeting shallow opportunities near Telfer with scale potential – known district, near infrastructure
 - High grade intersections – modern exploration techniques can unearth West Tanami potential
- ✓ Project generation alliance with Australia's largest gold mining company, Newcrest Mining Limited
- ✓ Large prospective Copper-Cobalt landholding providing leverage in a proven minerals district (~2000km²)
 - Metallurgical testing of near surface high grade copper-cobalt oxide zone to test potential for an expedited, low capex production pathway
 - Drill testing of outcropping copper-cobalt gossan